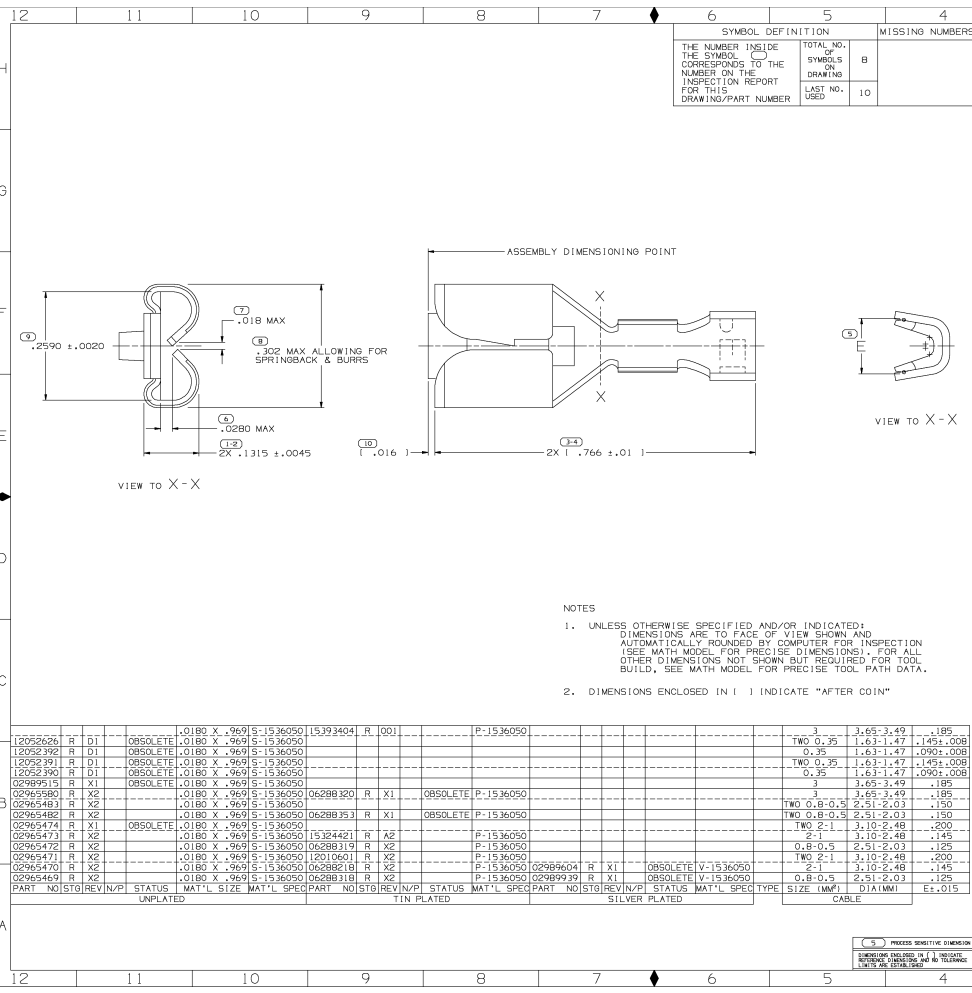


DELPHI PACKARD ELECTRIC SYSTEMS
WARREN, OHIO 44466



SYMBOL DEFINITION		MISSING NUMBERS	
THE NUMBER INSIDE THE SYMBOL () CORRESPONDS TO THE NUMBER ON THE INSPECTION REPORT FOR THIS DRAWING/PART NUMBER	TOTAL NO. OF SYMBOLS ON DRAWING	8	
	LAST NO. USED	10	

DATE	BY	REV	DESCRIPTION	APP'D	CHK'D	SIZE
000000	JT	001	ALL PARTS - REDRAWN TO PART DRAWING			AS
000000	R	002	RELEASED			AS

- NOTES
- UNLESS OTHERWISE SPECIFIED AND/OR INDICATED: DIMENSIONS ARE TO FACE OF VIEW SHOWN AND AUTOMATICALLY ROUNDED BY COMPUTER FOR INSPECTION (SEE MATH MODEL FOR PRECISE DIMENSIONS). FOR ALL OTHER DIMENSIONS NOT SHOWN BUT REQUIRED FOR TOOL BUILD, SEE MATH MODEL FOR PRECISE TOOL PATH DATA.
 - DIMENSIONS ENCLOSED IN () INDICATE "AFTER COIN"

PART NO	STG	REV	IN/P	STATUS	MAT'L	SIZE	MAT'L SPEC	PART NO	STG	REV	IN/P	STATUS	MAT'L	SIZE	MAT'L SPEC	PART NO	STG	REV	IN/P	STATUS	MAT'L	SIZE	MAT'L SPEC	SIZE (MM)	DIA (MM)	EX ±
12052626	R	D1		OBSOLETE	.0180	X .969	S-1536050	15393404	R	001			P-1536050													
12052392	R	D1		OBSOLETE	.0180	X .969	S-1536050						P-1536050													
12052391	R	D1		OBSOLETE	.0180	X .969	S-1536050						P-1536050													
12052390	R	D1		OBSOLETE	.0180	X .969	S-1536050						P-1536050													
02969915	R	X1		OBSOLETE	.0180	X .969	S-1536050						P-1536050													
02965580	R	X2			.0180	X .969	S-1536050	06288320	R	X1		OBSOLETE	P-1536050													
02965483	R	X2			.0180	X .969	S-1536050						P-1536050													
02965482	R	X2			.0180	X .969	S-1536050	06288353	R	X1		OBSOLETE	P-1536050													
02965474	R	X1		OBSOLETE	.0180	X .969	S-1536050						P-1536050													
02965473	R	X2			.0180	X .969	S-1536050	15324421	R	X2			P-1536050													
02965472	R	X2			.0180	X .969	S-1536050	06288319	R	X2			P-1536050													
02965471	R	X2			.0180	X .969	S-1536050	12010601	R	X2			P-1536050													
02965470	R	X2			.0180	X .969	S-1536050	06288218	R	X2			P-1536050	02969604	R	X1		OBSOLETE	V-1536050							
02965469	R	X2			.0180	X .969	S-1536050	06288318	R	X2			P-1536050	02969739	R	X1		OBSOLETE	V-1536050							
PART NO	STG	REV	IN/P	STATUS	MAT'L	SIZE	MAT'L SPEC	PART NO	STG	REV	IN/P	STATUS	MAT'L	SIZE	MAT'L SPEC	PART NO	STG	REV	IN/P	STATUS	MAT'L	SIZE	MAT'L SPEC	SIZE (MM)	DIA (MM)	EX ±
							UNPLATED																			
							TIN PLATED																			

DELPHI
Automotive Systems

MATERIAL SPEC
SEE CHART

MINIMUM	RANGE	UNIT
PROF	TO	± .001
GEOMETRIC TOLERANCE	SEE FEATURE CONTROL FRAME	
ANGULAR TOLERANCE	± .000	

PART DRAWING

DATE: 0900
SCALE: 10:1
VOLUME: 08

PART GEOMETRY
2D PLANAR

UNLESS OTHERWISE SPECIFIED:
PERFECT FORM REQUIRED FOR FEATURES OF SIZE AT NOMINAL POSITION. TOLERANCES AND RELATED DATUMS APPLY AT CONDITION OF SIZE INDICATED IN FEATURE CONTROL FRAME. ALL OTHER GEOMETRIC TOLERANCES AND RELATED DATUMS APPLY SFS. SEPARATE TRUE POSITION CALLOUTS MAY BE OAKED SEPARATELY, REGARDLESS OF DATUM REFERENCE.

COPY OF MATH DATA
DO NOT SCALE

ENGLISH UNLESS OTHERWISE SPECIFIED. ALL DIMENSIONS ARE IN INCHES

THIRD ANGLE PROJECTION

DRAWING NAME: TAXI TERMINAL FEMALE 5B SERIES

SHEET NUMBER: 1 OF 1
DRAWING NUMBER: 02962878
REV: R 002

DATE: 001.701
APPROVED: JACOB TREJUB C
APPROVED: J. SVETHE
APPROVED: J. SVETHE

DATE: 30M00
DATE: 06J00

STATUS: 101
SIZE: A1