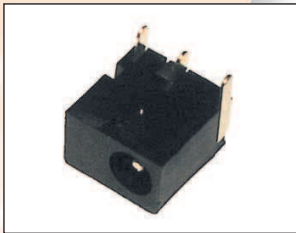
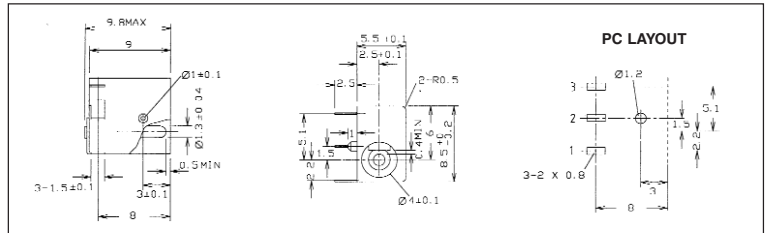


The **CLIFF®** range of DC Power Connectors comprise several different models for chassis mounting and horizontal or vertical PCB mounting. Our products are manufactured to strict quality and performance standards and incorporate a tough durable UL 94V-0 body. The standard colour is Black and some models are available with a choice of pin diameters and switched contacts. Typical applications include portable equipment of all types, signal processors, power supplies etc.



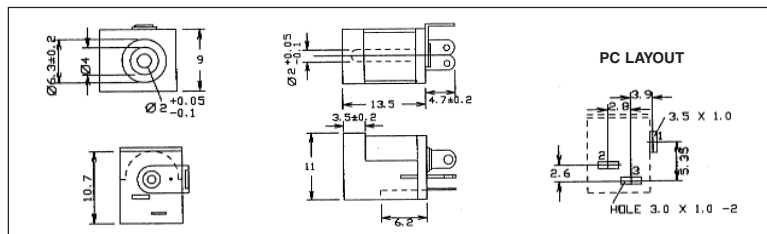
**DC-8 PCB mounting pin ring type. Rated 12V / 1A. Miniature version for PCB mounting. 1.3mm dia. pin.**

**DC-8 (FC68145)**



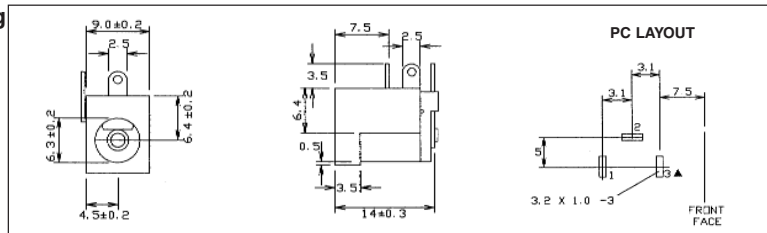
**DC-9 PCB mounting pin ring type with switch. Rated 12V / 5A. DC9 with 2.1mm dia. pin. DC9A with 2.5mm dia. pin.**

**DC-9 (FC68146)  
DC-9A (FC681461)**



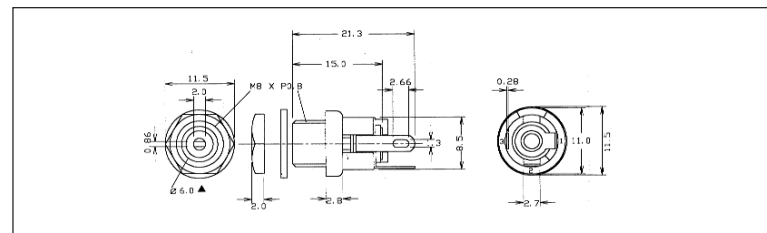
**DC-10 PCB mounting pin / ring type with switch. Rated 12V / 5A. DC10A with 2.1mm dia. pin. DC10B with 2.5mm dia. pin.**

**DC-10A (FC68148)  
DC-10B (FC68149)**



**SCD-026 chassis mounting. SCD - 026 with 2.1mm dia. pin. SCD - 026A with 2.5mm dia. pin.**

**SCD-026 (FC681445)  
SCD-026A (FC681446)**



**Cliff Electronic Components, Ltd.**

76 Holmethorpe Avenue, Holmethorpe Ind. Est.

Redhill, Surrey RH1 2PF. England

**Tel:** +44 (0) 1737 771375

**Fax:** +44 (0) 1737 766012

**Email:** sales@cliffuk.co.uk



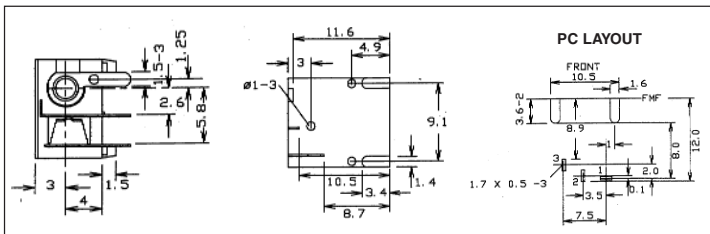
Visit us online at:

[www.cliffuk.co.uk](http://www.cliffuk.co.uk)

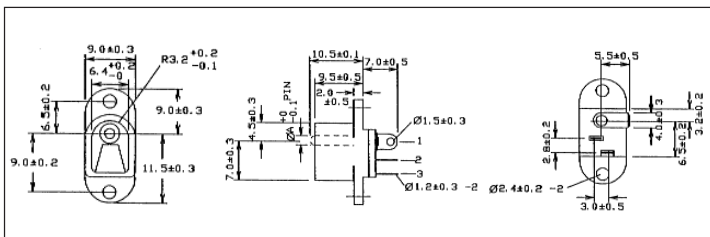


**DC-12A PCB mounting pin / ring type with switch. Rated 12V / 5A. With 2.1mm dia. pin.**

**DC-12A (FC681485)**

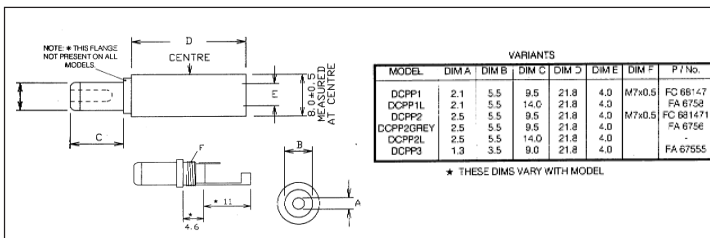


**DC-13 panel mounting pin / ring type with switch. Rated 12V / 5A. DC-13A with 2.1mm dia. pin. DC-13B with 2.5mm dia. pin. DC-13A (FC681492) DC-13B (FC681493)**



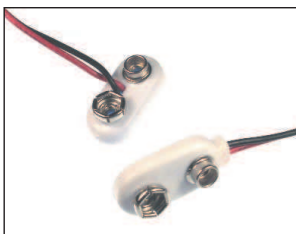
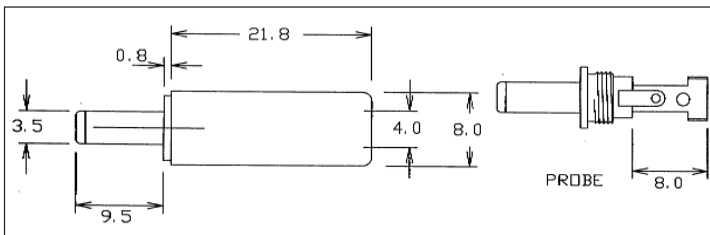
**DCPP1 DC Line connector. Rated 12V / 5A. DCPP1 with 2.1mm dia. pin. DCPP2 with 2.5mm dia. pin.**

**DCPP1 (FC68147) DCPP2 (FC681471)**

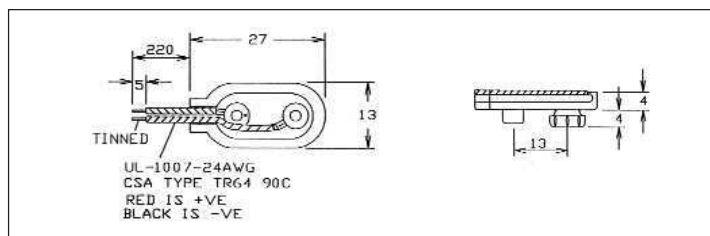


**DCPP3 DC Line connector. Rated 12V / 5A. With 1.3mm dia. pin**

**DCPP3 (FA67555)**



**CCB-1 9V Battery connector. Cable length 220mm. Tough molded body. CCB-1A 'T' Type Cable length 220mm. CCB-1 (FC6830) CCB-1A (FC6831)**



Please note we can also supply DC Plugs moulded onto cable as custom products.