

LTC4361 Overvoltage/ Overcurrent Protection Controller

DESCRIPTION

Demonstration circuit DC1506A features the LTC[®]4361 an overvoltage/overcurrent protection controller that safeguards 2.5V to 5.5V systems from input supply overvoltage. The LTC4361 is designed for portable devices with multiple power supply options including wall adapters, car battery adapters and USB ports.

The LTC4361 controls an external N-channel MOSFET in series with the input power supply. During overvoltage transients, the LTC4361 turns off the MOSFET within 1 μ s, isolating downstream components from the input supply. Inductive cable transients are absorbed by the MOSFET and load capacitance. In most applications, the LTC4361 provides protection from transients up to 80V without requiring transient voltage suppressors or other external components.

The LTC4361 has a delayed start-up and adjustable dV/dt ramp-up for inrush current limiting. A $\overline{\text{PWRGD}}$ pin provides power good monitoring for V_{IN} . The LTC4361

features a soft shutdown controlled by the $\overline{\text{ON}}$ pin and drives an optional external P-channel MOSFET for negative voltage protection. Following an overvoltage condition, the LTC4361 automatically restarts with a start-up delay. After an overcurrent fault, the LTC4361-1 remains off while the LTC4361-2 automatically restarts after a 130ms start-up delay.

DC1506A demonstrates three protection schemes selected with a jumper: (A) overvoltage and overcurrent protection, (B) overvoltage, overcurrent, and negative voltage protection, and (C) overvoltage, overcurrent, negative voltage, and reverse current protection. Each option has $\overline{\text{ON}}$ control, an output LED and can be applied to a USB protected output.

Design files for this circuit board are available at <http://www.linear.com/demo>

LT, LTC, LTM, Linear Technology and the Linear logo are registered trademarks of Linear Technology Corporation. All other trademarks are the property of their respective owners.

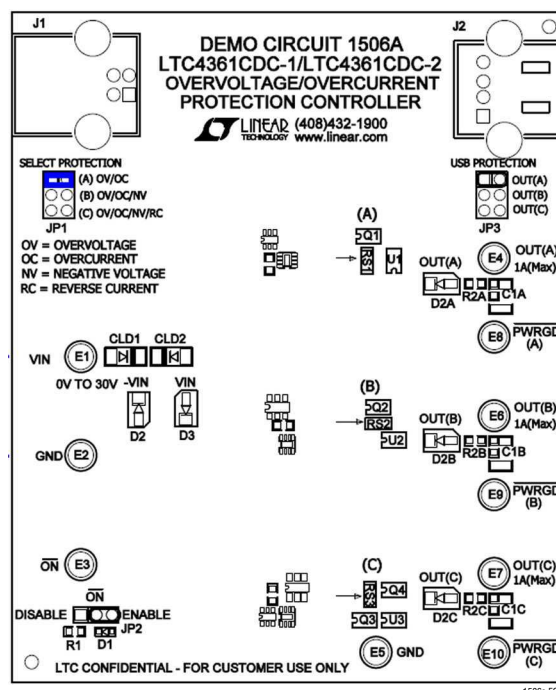


Figure 1. Demonstration Circuit 1506A

PERFORMANCE SUMMARY

Table 1. Typical DC1506A Performance Summary ($T_A = 25^\circ\text{C}$)

PARAMETER	CONDITION	VALUE
Input Voltage	Protection (A) OV Protection (B) OV/OC/NV Protection (C) OV/OC/NV/RC	0V to 30V -30V to 30V -30V to 30V
Output Voltage	Input Range for Gate Turn-On	2.1V to 5.8V
Overcurrent Threshold	51m Ω Sense Resistor	980mA
Overcurrent Retry	Protection (A) OV/OC, LTC4361-1 Protection (B) OV/OC/NV, LTC4361-2 Protection (C) OV/OC/NV/RC, LTC4361-1	Latchoff Auto-Retry Latchoff

QUICK START PROCEDURE

Demonstration circuit description 1506A is easy to set up to evaluate the performance of the LTC4361. Refer to Figure 2 and Figure 3 for proper measurement equipment setup and follow the procedure below.

1. Connect a power supply across V_{IN} and GND.
2. Select ENABLE at JP2 to enable the protection.
3. Select protection type at JP1 and connect a load and voltmeter across the corresponding output and GND:
 - a. For overvoltage and overcurrent protection select (A) OV/OC and connect to OUT(A). Figure 2a.
 - b. For overvoltage, overcurrent and negative voltage protection select (B) OV/OC/NV and connect to OUT(B). Figure 2b.
 - c. For overvoltage, overcurrent, negative voltage, and reverse current protection select (C) OV/OC/NV/RC, connect to OUT(C). Figure 2c.
4. For USB protection, connect a USB cable from J2 to the USB device (Figure 3). Select the protection type at JP1 and match JP3 to JP1. Connect a second USB cable from a computer to J1.

QUICK START PROCEDURE

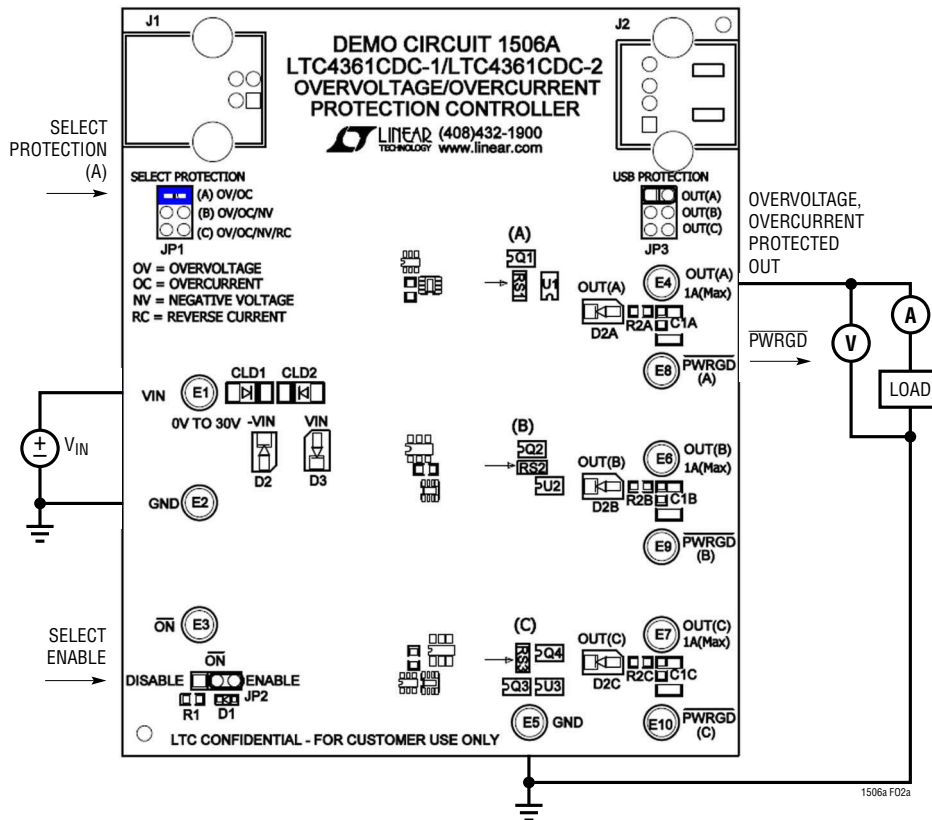


Figure 2a. DC1506A Protection (A) Setup for Overvoltage and Overcurrent

QUICK START PROCEDURE

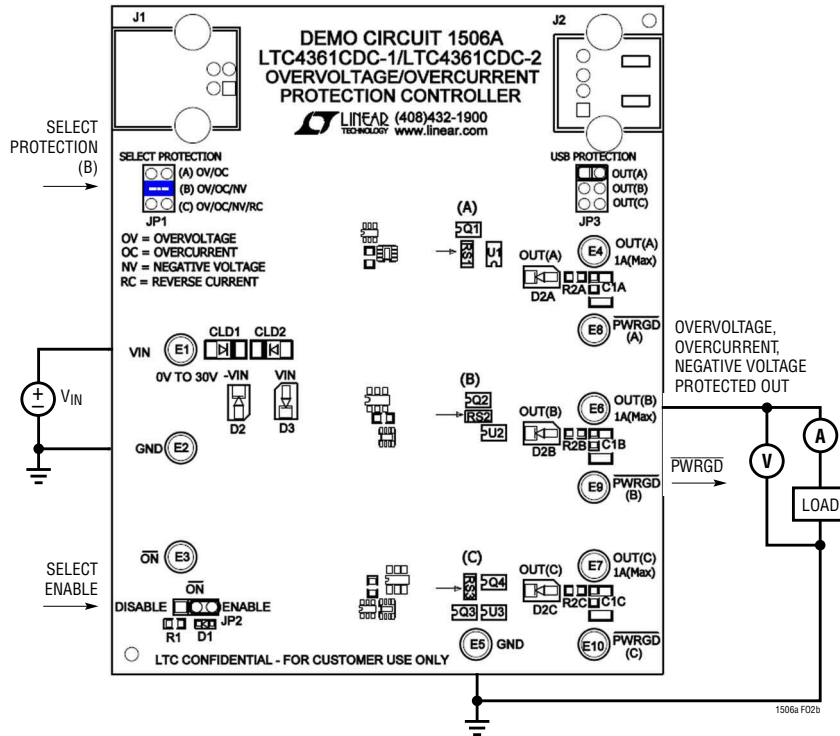


Figure 2b. DC1506A Protection (B) Setup for Overvoltage, Overcurrent and Negative Voltage

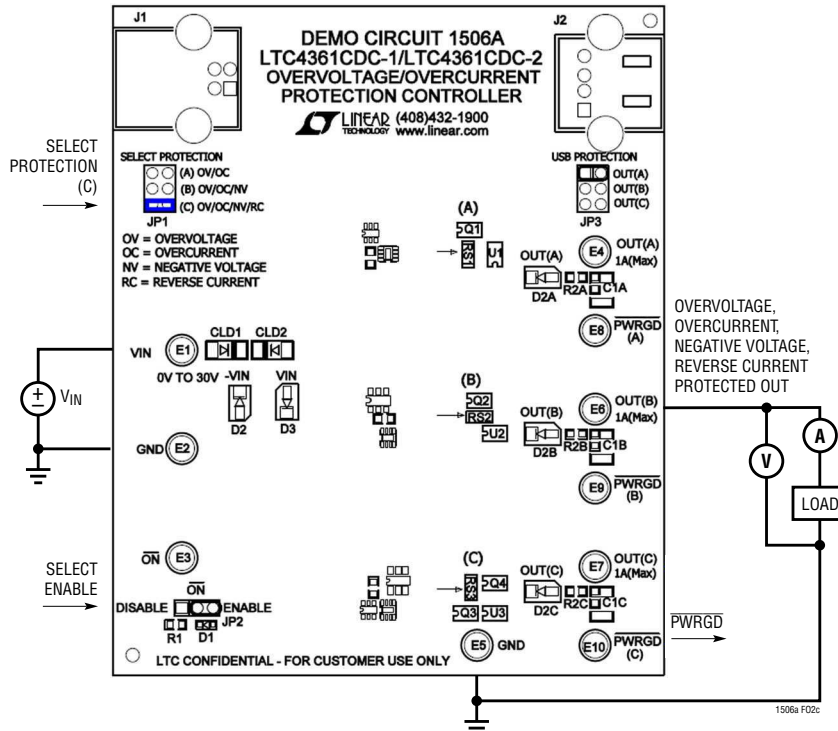


Figure 2c. DC1506A Protection (C) Setup for Overvoltage, Overcurrent, Negative Voltage, and Reverse Current

QUICK START PROCEDURE

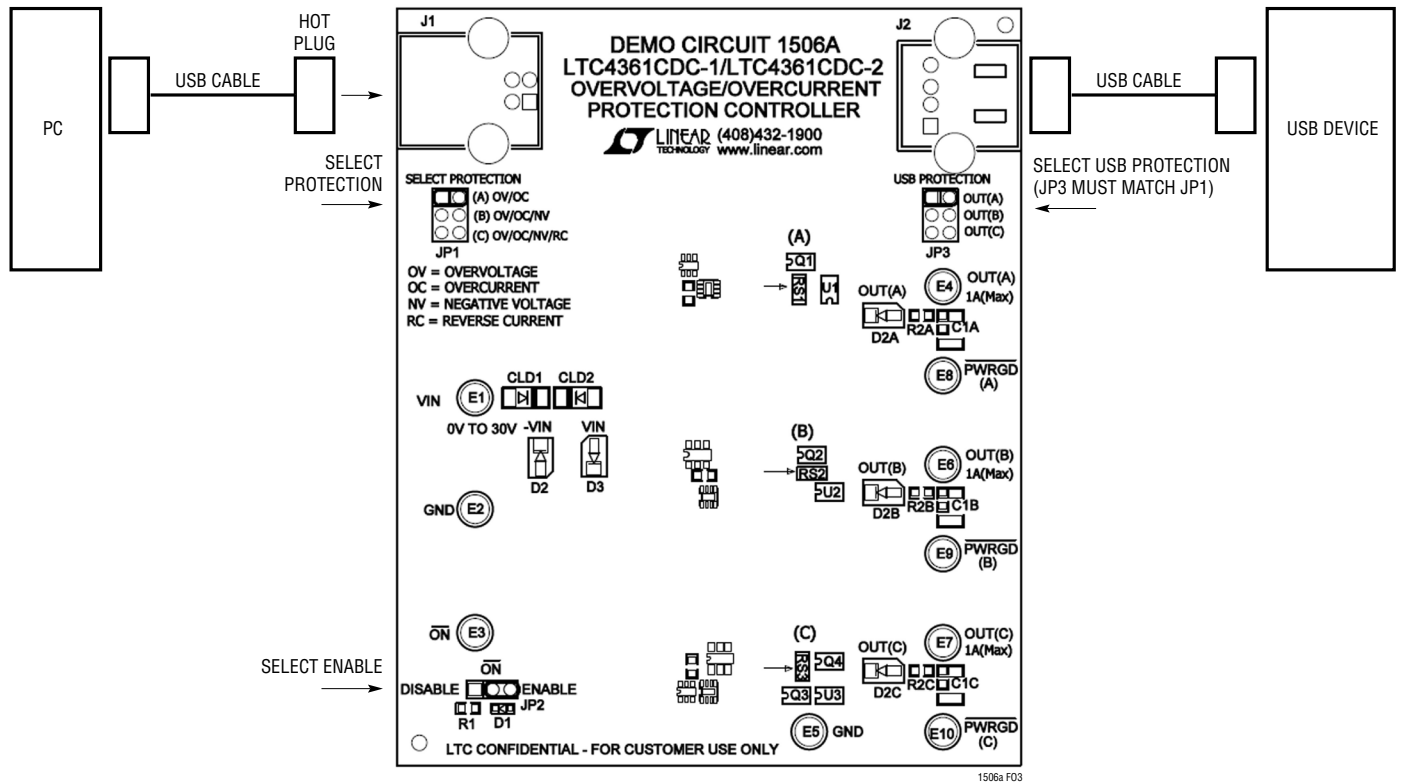


Figure 3. DC1506A USB Protection Setup

QUICK START PROCEDURE

OPERATION

The DC1506A is used to evaluate the LTC4361 in three protection configurations selected at JP1. The device in need of protection is connected to one of the three OUT test points or to the USB output connector J2. An input supply is connected at V_{IN} or a USB source is connected at J1.

\overline{ON} Control

The \overline{ON} pins on each of the three LTC4361s are tied together and controlled at JP2. Select ENABLE to enable the selected protection, or DISABLE to enter a low current sleep mode.

Protection (A) OV/OC

The first selection at JP1 is protection (A) OV/OC which protects against overvoltage and overcurrent. The LTC4361 turns on a single N-channel MOSFET when the input voltage is below the overvoltage threshold. A Kelvin sense to the sense resistor in series with the power path provides overcurrent detection. In the case of an overcurrent, the LTC4361-1 used in protection (A) latches off and requires a power cycle to turn the MOSFET back on. An amber input LED indicates if the input supply is on while a green OUT(A) LED indicates the gate is on and the input is passed over to the output.

Protection (B) OV/OC/NV

The second selection at JP1 is protection (B) OV/OC/NV which protects against overvoltage, overcurrent and negative voltage. The LTC4361 turns on an N-channel MOSFET when the input voltage is below the overvoltage threshold. A P-channel MOSFET is driven by the GATEP pin of the LTC4361 to protect the output against an inadvertent negative voltage connection at the input. A Kelvin sense to

the sense resistor in series with the power path provides overcurrent detection. In the case of an overcurrent, the LTC4361-2 used in protection (B) automatically retries to turn the MOSFET back on. The amber V_{IN} LED indicates if the input supply is on while a green OUT(B) LED indicates the gate is on and the input is passed over to the output. A red $-V_{IN}$ LED indicates if a negative input voltage is present.

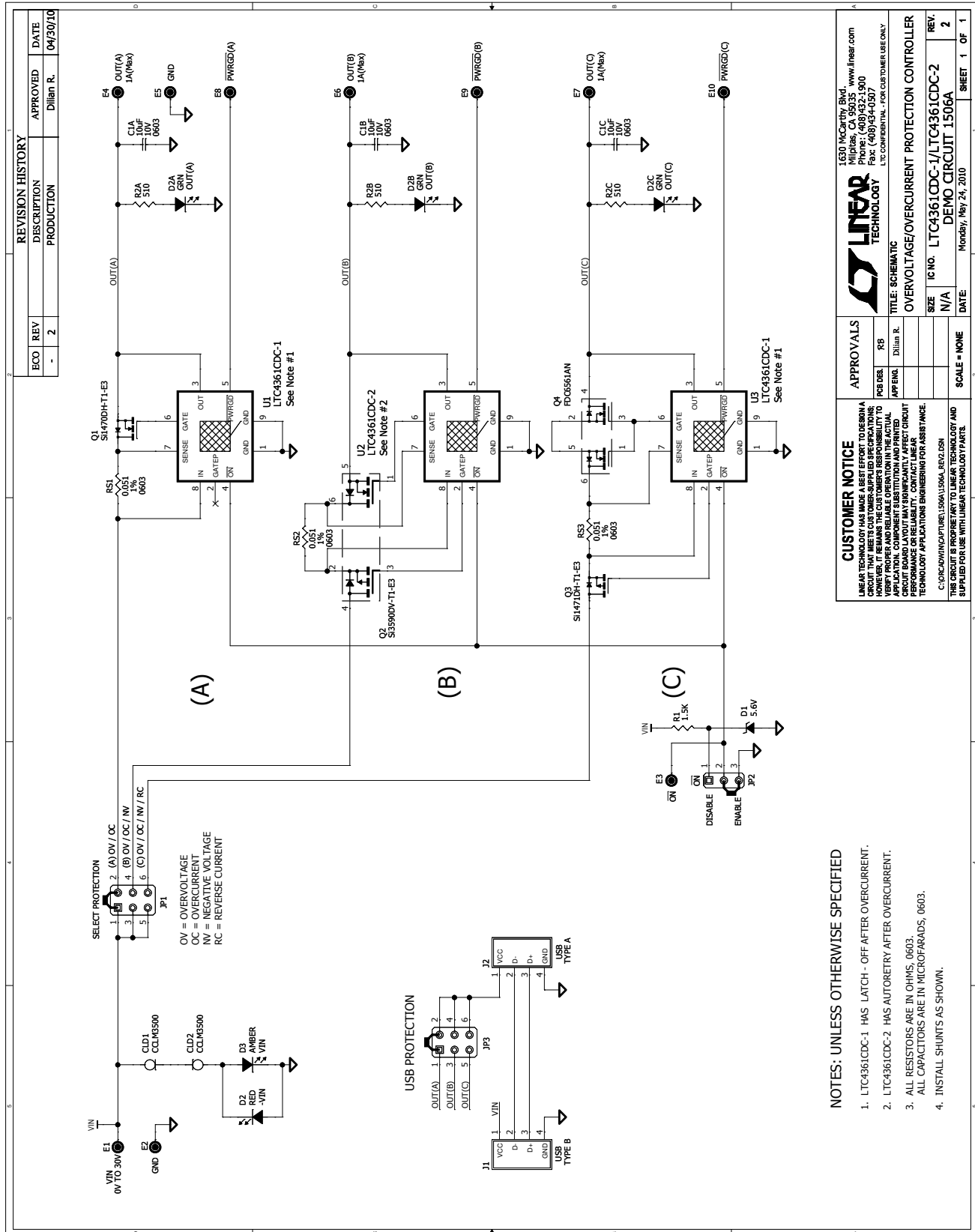
Protection (C) OV/OC/NV/RC

The third selection at JP1 is protection (C) OV/OC/NV/RC which protects against over voltage, overcurrent, negative voltage and reverse current. The LTC4361 turns on back-to-back N-channel MOSFETs when the input voltage is below the overvoltage threshold. The back-to-back N-channel MOSFETs blocks reverse current feeding in to the input. A P-channel MOSFET is driven by the GATEP pin of the LTC4361 to protect the output against an inadvertent negative voltage connection at the input. A Kelvin sense to the sense resistor in series with the power path provides overcurrent detection. In the case of an overcurrent, the LTC4361-1 used in protection (C) latches off and requires a power cycle to turn the MOSFET back on. The amber V_{IN} LED indicates if the input supply is on while a green OUT(C) LED indicates the gate is on and the input is passed over to the output. The red $-V_{IN}$ LED indicates if a negative input voltage is present.

USB Protection

DC1506A also provides connection for USB protection. First connect a USB device with a USB cable at J2. Select the protection type at JP1 and match this with JP3. Select ENABLE at JP2. The USB source can then be connected at J1.

SCHEMATIC DIAGRAM



NOTES: UNLESS OTHERWISE SPECIFIED

- LTC4361CDC-1 HAS LATCH - OFF AFTER OVERCURRENT.
- LTC4361CDC-2 HAS AUTORETRY AFTER OVERCURRENT.
- ALL RESISTORS ARE IN OHMS, 0603.
- ALL CAPACITORS ARE IN MICROFARADS, 0603.
- INSTALL SHUNTS AS SHOWN.

CUSTOMER NOTICE

LINEAR TECHNOLOGY MAKES NO WARRANTY, REPRESENTATION OR AGREEMENT REGARDING THE PERFORMANCE OF THIS CIRCUIT BOARD LAYOUT. THE CIRCUIT BOARD LAYOUT MAY SIGNIFICANTLY AFFECT CIRCUIT PERFORMANCE OR RELIABILITY. CONTACT LINEAR TECHNOLOGY APPLICATIONS ENGINEERING FOR ASSISTANCE.

C:\ORCA\ADV\CAPTURE\LINEAR\DC1506A_JPEG.DSN

THIS CIRCUIT IS PROPRIETARY TO LINEAR TECHNOLOGY AND SUPPLIED FOR USE WITH LINEAR TECHNOLOGY PARTS.

APPROVALS

DESIGNER	APPENING	SCALE
RB	Dilian R.	NONE

LINEAR TECHNOLOGY

1630 McCarthy Blvd.,
Folsom, CA 95635
Tel: (916) 961-8000
Fax: (916) 961-4517
LTC CONVERTER - FOR CUSTOMER USE ONLY

TITLE: SCHEMATIC

OVERVOLTAGE/OVERCURRENT PROTECTION CONTROLLER

SIZE: N/A
REV: 2
DATE: Monday, May 24, 2010

LTC4361CDC-1/LTC4361CDC-2
DEMO CIRCUIT 1506A

SHEET 1 OF 1

DEMO MANUAL DC1506A

DEMONSTRATION BOARD IMPORTANT NOTICE

Linear Technology Corporation (LTC) provides the enclosed product(s) under the following **AS IS** conditions:

This demonstration board (DEMO BOARD) kit being sold or provided by Linear Technology is intended for use for **ENGINEERING DEVELOPMENT OR EVALUATION PURPOSES ONLY** and is not provided by LTC for commercial use. As such, the DEMO BOARD herein may not be complete in terms of required design-, marketing-, and/or manufacturing-related protective considerations, including but not limited to product safety measures typically found in finished commercial goods. As a prototype, this product does not fall within the scope of the European Union directive on electromagnetic compatibility and therefore may or may not meet the technical requirements of the directive, or other regulations.

If this evaluation kit does not meet the specifications recited in the DEMO BOARD manual the kit may be returned within 30 days from the date of delivery for a full refund. **THE FOREGOING WARRANTY IS THE EXCLUSIVE WARRANTY MADE BY THE SELLER TO BUYER AND IS IN LIEU OF ALL OTHER WARRANTIES, EXPRESSED, IMPLIED, OR STATUTORY, INCLUDING ANY WARRANTY OF MERCHANTABILITY OR FITNESS FOR ANY PARTICULAR PURPOSE. EXCEPT TO THE EXTENT OF THIS INDEMNITY, NEITHER PARTY SHALL BE LIABLE TO THE OTHER FOR ANY INDIRECT, SPECIAL, INCIDENTAL, OR CONSEQUENTIAL DAMAGES.**

The user assumes all responsibility and liability for proper and safe handling of the goods. Further, the user releases LTC from all claims arising from the handling or use of the goods. Due to the open construction of the product, it is the user's responsibility to take any and all appropriate precautions with regard to electrostatic discharge. Also be aware that the products herein may not be regulatory compliant or agency certified (FCC, UL, CE, etc.).

No License is granted under any patent right or other intellectual property whatsoever. **LTC assumes no liability for applications assistance, customer product design, software performance, or infringement of patents or any other intellectual property rights of any kind.**

LTC currently services a variety of customers for products around the world, and therefore this transaction **is not exclusive**.

Please read the DEMO BOARD manual prior to handling the product. Persons handling this product must have electronics training and observe good laboratory practice standards. **Common sense is encouraged.**

This notice contains important safety information about temperatures and voltages. For further safety concerns, please contact a LTC application engineer.

Mailing Address:

Linear Technology
1630 McCarthy Blvd.
Milpitas, CA 95035

Copyright © 2004, Linear Technology Corporation

dc1506af



Linear Technology Corporation
1630 McCarthy Blvd., Milpitas, CA 95035-7417
(408) 432-1900 • FAX: (408) 434-0507 • www.linear.com

LT 1010 • PRINTED IN USA



© LINEAR TECHNOLOGY CORPORATION 2010