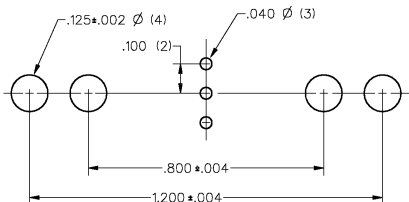


DRAWING NUMBER: CSLA2DG  
 PAGE 1 OF 1  
 RELEASE NO. DR-3141-81 REV. 1  
 X83401-CS  
 REVISIONS  
 4  
 FORM/TEK  
 TMM 14MARS83  
 K.A.G. 4MARS83  
 DATE

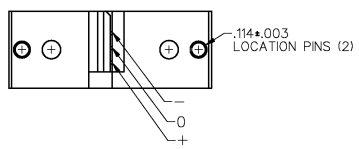
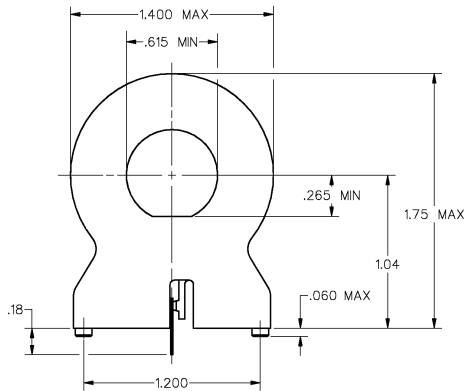
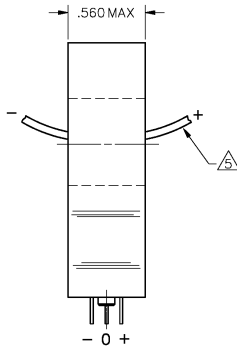
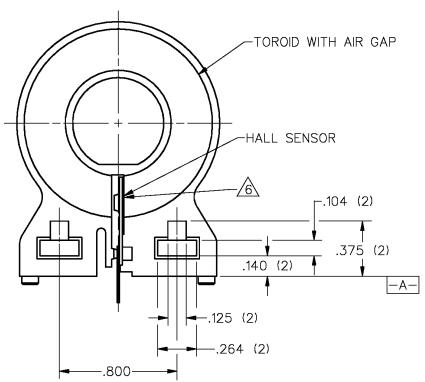
CHARACTERISTICS

PARAMETER	MIN	TYP	MAX	UNITS	CONDITIONS/REMARKS
SUPPLY VOLTAGE	5.4		13.2	VOLTS	-25°C TO 85°C
SUPPLY CURRENT		8.0	20	mA	MAX @ -25°C, TYP @ 25°C, V <sub>s</sub> =8.0V, EXCLUDES LOAD
OUTPUT CURRENT	1	13		mA	SINKING OR SOURCING
OUTPUT VOLTAGE SWING	(-V) <sub>s</sub> +1.25		(+V) <sub>s</sub> -1.25	VOLTS	MAX CLAMPED @ 9.0 VOLTS MIN
SENSITIVITY	15.1		17.2	mV/NI	@ V <sub>s</sub> =8.0V @ 25°C $\Delta$
LINEARITY		.5	1.0	% OF SPAN	DEV FROM STR LINE FROM -1 MAX TO +1 MAX $\Delta$
V <sub>out</sub> @ $\emptyset$ NULL	.5(V <sub>s</sub> )-2%		.5(V <sub>s</sub> )+2%	VOLTS	25°C
TEMP ERROR-NULL	-.02		+.02	%/°C	-25°C TO 85°C
TEMP ERROR-GAIN	-.06		+.01	%/°C	-25°C TO 85°C

**M** CSLA2DG



SUGGESTED HOLE CENTERS  
SCALE 4:1



- NOTES
- $\Delta$  SUGGESTED 1 MAX FOR LINEAR OPERATION IS 150 AMPS
  - RECOMMENDED MOUNTING IS 4-40 SQUARE NUT AND .375 LONG 4-40 SCREW
  - CONVENTIONAL CURRENT FLOW IN DIRECTION INDICATED WILL CAUSE AN INCREASE IN OUTPUT VOLTAGE
  - THE DEVICE CANNOT BE DAMAGED BY MAGNETIC OVERDRIVE AT V<sub>s</sub> OTHER THAN 8.0 VOLTS, SENSITIVITY = (NUMBER SHOWN) X V<sub>s</sub>/8
  - $\Delta$  GROUND PLANE ON BACKSIDE OF THE CERAMIC IS ELECTRICALLY CONNECTED TO THE (-) TERMINAL



THIS DRAWING COVERS A PROPRIETARY ITEM AND IS THE PROPERTY OF MICRO SWITCH, A DIVISION OF HONEYWELL. THIS DRAWING IS NOT TO BE COPIED OR USED WITHOUT THE APPROVAL OF MICRO SWITCH.

**MICRO SWITCH**  
a Honeywell Division

CURRENT SENSOR

CATALOG LISTING  
**CSLA2DG**

THIRD ANGLE PROJECTION	
SCALE	2 : 1
DO NOT SCALE PRINT	
UNLESS OTHERWISE SPECIFIED TOLERANCES ARE	
ONE PLACE (L0)	±.030
TWO PLACES (L00)	±.015
THREE PLACES (L000)	±.005
ANGLES	±
WEIGHT	

MASTER REDUCED

FED. MFG. CODE #1829