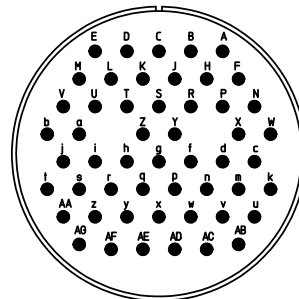
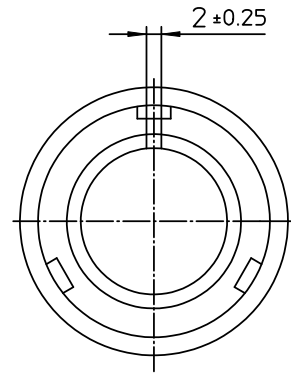



| NO. | MASSE / DIMENSION |
|-----|-------------------|
| A | 66.3 |
| B1 | 31.8 |
| B2 | 26.8 |
| C | 76 |



| NO. | BESCHREIBUNG / DESCRIPTION |
|-----|---|
| 2 | ISOLIERKÖRPER BUCHSE / INSULATOR SOCKET |
| 3 | DICHTKÖRPER / GROMMET |
| 4 | ENDRING / ENDRING |
| 6 | KONTAKTBUCHSE / CONTACT SOCKET |
| 7 | ZYLINDERGHÄUSE / BARREL |
| 9 | ÜBERWURFMUTTER / COUPLING NUT |
| 10 | DICHRING FRONT / FRONT SEALING RING |
| 12 | ENDGEHÄUSE / ENDBELL |

Note: Due to an automatic nomenclature system, numbers generated may not be sequential.
 Notiz: Durch ein automatisches Benennungssystem können Nummerierungen entstehen, die nicht fortlaufend sind.

| Material Specification: |
|---|
| Shell Material: Aluminium alloy |
| Shell Plating: Olive drab chromate over cadmium plating |
| Insulator Material: CR-Elastomere |
| Contact Material: Copper alloy |
| Contact Plating: Gold 0,5 µm |

| all dimensions are in mm | drawing for | | |
|---|---|----------|-------------------------|
| Dimensions without tolerance indications are general tolerances in acc. with DIN7168m | CUSTOMER | | |
|  ITT <i>Engineered for life</i> <small>ITT CANNON GMBH 67138 Wiesbaden, Germany</small> | description CA3106E36A34S-B-F80-A176 | | |
| | Plug, straight | | |
| | Endbell with clamp and bushing AWG Crimp / Socket / Layout: 36A34 | | |
| © All rights reserved. Reproduction or issue to third in any form whatever is only permitted with written authorization of ITT Cannon | <table border="1"> <tr> <td>page 1/1</td> <td>revision 392.12, Apr 11</td> </tr> </table> | page 1/1 | revision 392.12, Apr 11 |
| page 1/1 | revision 392.12, Apr 11 | | |