

R Series ROTA-SLIDE® Rotary Switches



Features/Benefits

- Multi-pole and multi-position
- Positive detent
- Panel and PCB mounting
- Enclosed
- RoHS Compliant

Typical Applications

- Ceiling fans
- Industrial equipment
- Portable tools



Specifications

CONTACT RATING: Q contact material: 5 AMPS @ 125 V AC; 2.5 AMPS @ 250 V AC; 0.5 AMP @ 125 V DC; 1/8 HP @ 125 and 250 VAC (UL/CSA).

See page L-36 for additional ratings.

ELECTRICAL LIFE: 10,000 make-and-break cycles at full load.

CONTACT RESISTANCE: Below 10 m Ω typ. initial @ 2-4 V DC, 100 mA, for both silver and gold plated contacts.

INSULATION RESISTANCE: 10⁹ Ω min.

DIELECTRIC STRENGTH: 1,000 Vrms min. @ sea level.

INDEXING: 36°-one contact models, 10 position max.; two contact models, 5 position max.

OPERATING & STORAGE TEMPERATURE: -30°C to 95°C

Materials

HOUSING & BUSHING: 6/6 nylon (UL 94V-2).

ACTUATOR: 6/6 nylon (UL 94V-2).

CONTACTS & TERMINALS: Q contact material: Copper, silver plated. See page K-36 for additional contact materials.

CONTACT SPRING: Music wire or stainless steel.

MOUNTING NUT: Steel, zinc plated.

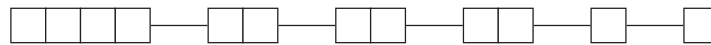
TERMINAL SEAL: Epoxy.

NOTE: Any models supplied with Q or B contact material are RoHS compliant.

NOTE: Specifications and materials listed above are for switches with standard options. For information on specific and custom switches, consult Customer Service Center.

Build-A-Switch

To order, simply select desired option from each category and place in the appropriate box. Available options are shown and described on pages K-31 and K-32. For additional options not shown in catalog, consult Customer Service Center.



Switch Function

- R100** SP, 36° Index, 10 pos. no stops
- R103** SP, 36° Index, 3 pos.
- R104** SP, 36° Index, 4 pos.
- R108** SP, 36° Index, 8 pos.
- R203** DP, 36° Index, 3 pos.
- R204** DP, 36° Index, 4 pos.
- R205** DP, 36° Index, 5 pos.

Actuator

- 07** .500" high with .156" flat
- 05** .375" high with .156" flat
- 15** Screwdriver slot without bushing

Mounting Style

- RR** 3/8-32 threaded bushing
- RN** PC without bushing
- RS** PC without bushing

Terminations

- 03** Solder lug with hole
- 01** Solder lug with notch
- 02** PC Thru-hole
- WC** Wire Lead

Contact Material

- Q** Silver
- B** Gold

Seal

- NONE** No seal
- E** Epoxy seal



K

Rotary



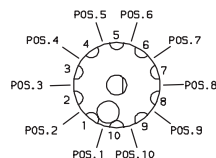
Dimensions are shown: Inch (mm)
Specifications and dimensions subject to change

R Series ROTA-SLIDE® Rotary Switches

SWITCH FUNCTION

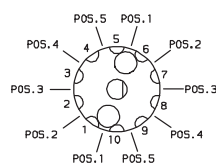
| SP MODELS 36° INDEXING | | | |
|------------------------|-----------|-------------------------|--------------------|
| NO. POLES | MODEL NO. | SWITCH FUNCTION | TERMINALS |
| SP | R100 | 10 Position No Stops | All Terminals |
| | R103 | 3 Position | 10-1-2-3 |
| | R104 | 4 Position | 10-1-2-3-4 |
| | R108 | 8 Position | 10-1-2-3-4-5-6-7-8 |

SP MODELS 36° INDEXING SCHEMATIC



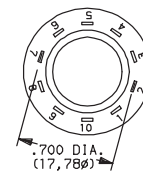
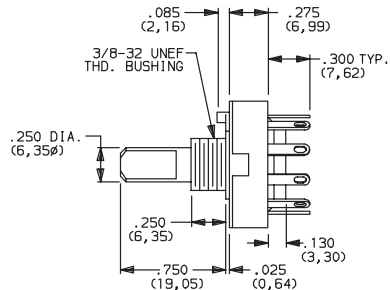
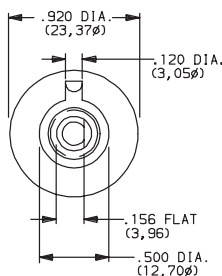
| DP MODELS 36° INDEXING | | | |
|------------------------|-----------|-----------------|------------------|
| NO. POLES | MODEL NO. | SWITCH FUNCTION | TERMINALS |
| DP | R203 | 3 Position | 10-1-2-3-5-6-7-8 |
| | R204 | 4 Position | All Terminals |
| | R205 | 5 Position | All Terminals |

DP MODELS 36° INDEXING SCHEMATIC



All models with all options when ordered with 'Q' contact material.

NOTE: Break-before-make contacts. Actuators and contacts are shown in position 1. No common terminal is present. Switching function is provided by movable contacts shorting adjacent pairs of stationary contacts.

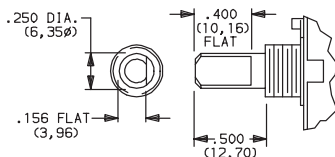


TERM. NOS.
MOLDED ON HOUSING

Part number show: R10007RR03Q

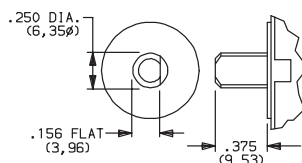
ACTUATOR

07 .500" HIGH WITH .156" FLAT



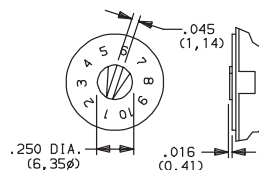
Shown with 'RR' mounting style. For mounting styles without bushing, add .250 (6,35) to actuator length.

05 .375" HIGH WITH .156" FLAT

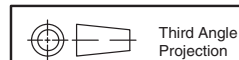


Shown with 'RN' mounting style.

15 SCREWDRIVER SLOT



Arrow on actuator marked red (std.). Shown with 'RS' mounting style.



Dimensions are shown: mm
Specifications and dimensions subject to change



K

Rotary

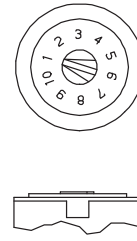
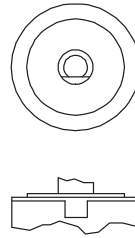
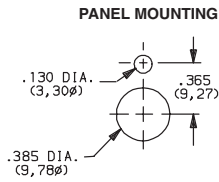
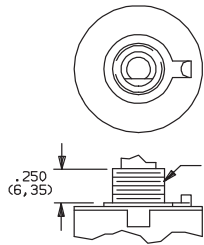
R Series ROTA-SLIDE® Rotary Switches

MOUNTING STYLE

RR 3/8-32 THREADED BUSHING

RN PC WITHOUT BUSHING

RS PC SCREWDRIVER SLOT WITHOUT BUSHING



Position numbers and characters are molded on housing.

Mounting nut included (part number 175000100).

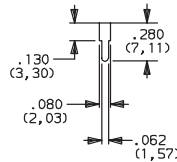
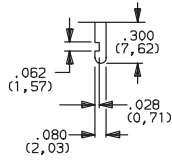
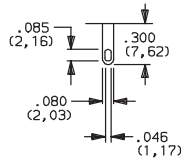
TERMINATIONS

03 SOLDER LUG WITH HOLE

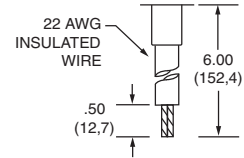
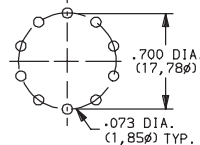
01 SOLDER LUG WITH NOTCH

02 PC THRU-HOLE

WC WIRE LEAD



PC MOUNTING



K

Rotary

CONTACT MATERIAL

| OPTION CODE | CONTACT AND TERMINAL MATERIAL | RATING | |
|-------------|-------------------------------|-----------------------|--|
| | | | |
| Q | SILVER ² | POWER | 5 AMPS @ 125 V AC; 2.5 AMPS @ 250 V AC; 0.5 AMP @ 125 V DC (UL/CSA); 1/8 HP @ 125 and 250 VAC (UL/CSA). |
| B | GOLD ¹ | LOW LEVEL/DRY CIRCUIT | 0.4 VA MAX. @ 20 V AC or DC MAX. |

* Note: See Technical Data section of this catalog for RoHS compliant and compatible definition and specifications.

¹ CONTACTS & TERMINALS: Copper, with gold plate over nickel plate.

² CONTACTS & TERMINALS: Copper, silver plated. (Standard with all termination options.)

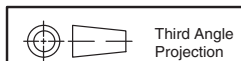
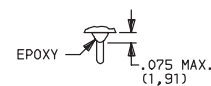
NOTE: Any models supplied with Q, B or G contact material are RoHS compliant.

All models with all options when ordered with 'Q' contact material.

SEAL

NONE NO SEAL

E EPOXY SEAL



Third Angle Projection

Dimensions are shown: Inch (mm)
Specifications and dimensions subject to change

