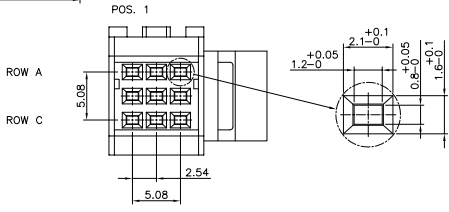
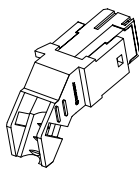


NOTES:
 1. THE "LF" PRODUCTS MEET EUROPEAN UNION DIRECTIVES AND OTHER COUNTRY REGULATIONS AS DESCRIBED IN GS-22-008
 2. LEAD FREE OR ROHS DIRECTIVE LABELING TO BE PROVIDED AS PER GS-14-920 FOR ROHS COMPATIBLE VERSION.

PERFORMANCES CHARACTERISTICS
 VOLTAGE RATING : 250 VAC (rms)
 CURRENT RATING : 1,5 A AT 25 °C, 1 A AT 70 °C.
 INSULATION RESISTANCE : 1000 MΩ INITIAL, 100 MΩ MIN. AFTER TEST
 DIELECTRIC WITHSTANDING VOLTAGE : 1000 VAC (rms).
 CONTACT RESISTANCE : 15 mΩ MAX. INITIAL, 5 mΩ MAX. RISE OF INITIAL VALUE AFTER TEST.
 OPERATING TEMPERATURE*: -40 °C TO +125 °C.
 INSERTION FORCE : 1 N MAX./CONTACT.
 WITHDRAWAL FORCE : 0,2 N MIN./CONTACT.
 *DEPENDING ON THE CABLE, THE MAX. TEMPERATURE CAN BE LOWER.
 FOR STANDARD PVC INSULATED CABLE : 105 °C MAX.

CONSTRUCTION
 BODY MATERIAL : GLASS-REINFORCED THERMOPLASTIC (UL94V-0).
 COVER MATERIAL : POLYESTER (PBT), COLOUR : BLACK.
 CONTACT MATERIAL : PHOSPHOR BRONZE.
 CONTACT FINISH : Au OVER Ni IN CONTACT AREA
 SnPb on I.D.C. TERMINAL FOR LEADED PRODUCTS.
 Sn (MATTE TIN) ON I.D.C. TERMINAL FOR LEAD FREE PRODUCTS.
 Z0 : PERFORMANCE LEVEL PER DIN41612 CLASS 3
 Z1 : PERFORMANCE LEVEL PER DIN41612 CLASS 2
 EP : PERFORMANCE LEVEL PER DIN41612 CLASS 1
 OTHERS : CONSULT FCJ
 TIE-WRAP : OPTIONAL (PART N. TF3)

PART NUMBERS
 BPS8B09FLD0C0----- CONNECTOR FOR WIRE SIZE AWG28, AWG30. (CONTACT IDENTIFICATION : 0).
 BPS8B09FLD2C0----- CONNECTOR FOR WIRE SIZE AWG24, AWG26 (CONTACT IDENTIFICATION : 2).
AWG WIRE SIZE MARKING
 BPS8B09FLD0C0-- : 28/30
 BPS8B09FLD0C0--LF : 28/30
 BPS8B09FLD2C0-- : 24/26
 BPS8B09FLD2C0--LF : 24/26
DATECODE MARKING
 A + YEAR & WEEKCODE, EXAMPLE : A9950.



mat'l. code	surface	tolerance	projection	product family
SEE NOTE	ISO 1302	ISO 406 ISO 1101		BPS8
tr	ecn no	dr	date	tolerances unless otherwise specified
A	F00819	DLE	2000-10-23	angles linear 0.1±0.2
B	I05-0123	MINI	2005-07-27	0.01±0.1
C	I06-0067	MINI	2006-08-01	±1'
				scale -
				mm
				size
				A3
				type Product Customer Drawing
sheet	revision	C	C	C
index	sheet	1	2	3

title	ASSY BPS8 09 POS. A,B,C LOADED
dwg no	55350
sheet 1 of 4	

PRODUCT NUMBER BPS8B09FLD-00

WITH "LF" SUFFIX	LEAD FREE OR RoHS COMPATIBLE PRODUCT
WITHOUT SUFFIX	LEADED PRODUCT

WIRE ACCOMODATION		
PRODUCT NUMBER	WIRE SIZE	CONTACT IDENTIFICATION
BPS8B09FLD000--	AWG28/30	0
BPS8B09FLD200--	AWG24/26	2

CONTACT PLATING	
PLATING CODE	PERFORMANCE LEVEL PER DIN41612
Z0	CLASS 3
Z1	CLASS 2
E9	CLASS 1

NOTES:
 1. THE "LF" PRODUCTS MEET EUROPEAN UNION DIRECTIVES AND OTHER COUNTRY REGULATIONS AS DESCRIBED IN GS-22-008
 2. LEAD FREE OR RoHS DIRECTIVE LABELING TO BE PROVIDED AS PER GS-14-920 FOR RoHS COMPATIBLE VERSION.

PERFORMANCES CHARACTERISTICS

VOLTAGE RATING : 250 VAC (rms)
 CURRENT RATING : 1,5 A AT 25 °C, 1 A AT 70 °C.
 INSULATION RESISTANCE : 1000 MΩ INITIAL, 100 MΩ MIN. AFTER TEST
 DIELECTRIC WITH-
 STANDING VOLTAGE : 1000 VAC (rms).
 CONTACT RESISTANCE : 15 mΩ MAX. INITIAL, 5 mΩ MAX. RISE OF INITIAL VALUE AFTER TEST.
 OPERATING TEMPERATURE: -40 °C TO +125 °C.
 INSERTION FORCE : 1 N MAX./CONTACT.
 WITHDRAWAL FORCE : 0,2 N MIN./CONTACT.

*DEPENDING ON THE CABLE, THE MAX. TEMPERATURE CAN BE LOWER.
 FOR STANDARD PVC INSULATED CABLE : 105 °C MAX.

CONSTRUCTION

BODY MATERIAL : GLASS-REINFORCED THERMOPLASTIC (UL94V-0).
 CONTACT MATERIAL : PHOSPHOR BRONZE.
 CONTACT FINISH : Au OVER Ni IN CONTACT AREA
 SnPb ON I.D.C. TERMINAL FOR LEADED PRODUCTS.
 Sn (MATTE TIN) ON I.D.C. TERMINAL FOR LEAD FREE PRODUCTS.
 Z0 : PERFORMANCE LEVEL PER DIN41612 CLASS 3
 Z1 : PERFORMANCE LEVEL PER DIN41612 CLASS 2
 E9 : PERFORMANCE LEVEL PER DIN41612 CLASS 1
 OTHERS : CONSULT FCI

PART NUMBERS

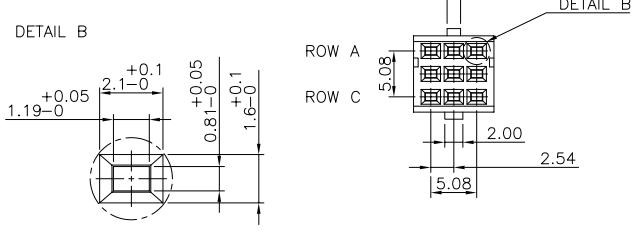
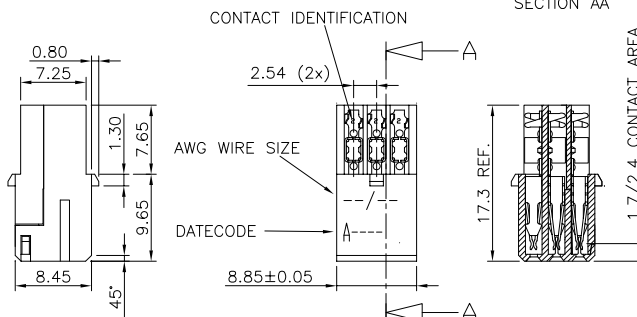
BPS8B09FLD000---- CONNECTOR FOR WIRE SIZE AWG28, AWG30.
 (CONTACT IDENTIFICATION : 0).
 BPS8B09FLD200---- CONNECTOR FOR WIRE SIZE AWG24, AWG26
 (CONTACT IDENTIFICATION : 2).

AWG WIRE SIZE MARKING

BPS8B09FLD000-- : 28/30
 BPS8B09FLD000--LF : 28/30
 BPS8B09FLD200-- : 24/26
 BPS8B09FLD200--LF : 24/26

DATECODE MARKING

A + YEAR & WEEKCODE, EXAMPLE : A9950.



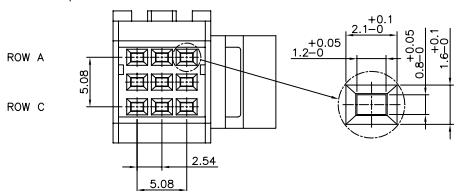
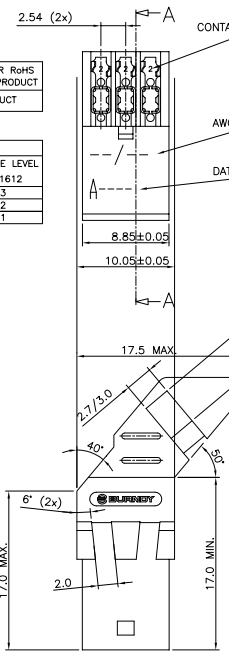
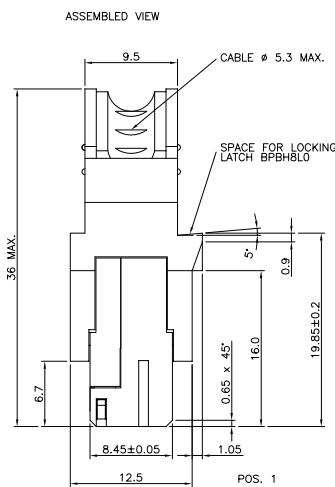
mat'l. code		surface		tolerance		projection		product family	
SEE NOTE		ISO 1302		ISO 406 ISO 1101		mm		BPS8	
lfr	ecn no	dr	date	tolerances unless otherwise specified		mm		title	
A	F00819	DLE	2000-10-13	0.1±0.2		mm		ASSY BPS8	
B	I05-0123	MINI	2005-07-27	0.01±0.1		mm		09 POS. A,B,C LOADED	
C	I06-0067	MINI	2006-08-01	±1°		mm		dwg no 55350 sheet 2 of 4 size A3	
sheet index		revision sheet		dr D.LEGRAND 2000-10-13		FCI		type Product Customer Drawing	
				enrg J.F.NOTTEAU 2000-10-19					
				chr RAKHEE GEORGE 2006-06-01					
				appd RAKHEE GEORGE 2006-06-01					

PRODUCT NUMBER BPS8B09FLD-M0

WITH "LF" SUFFIX LEAD FREE OR ROHS COMPATIBLE PRODUCT
 WITHOUT SUFFIX LEADED PRODUCT

WIRE ACCOMODATION		
PRODUCT NUMBER	WIRE SIZE	CONTACT IDENTIFICATION
BPS8B09FLD0M0	AWG28/30	0
BPS8B09FLD2M0	AWG24/26	2

CONTACT PLATING	
PLATING CODE	PERFORMANCE LEVEL
Z0	PER DIN41612 CLASS 3
Z1	CLASS 2
E9	CLASS 1



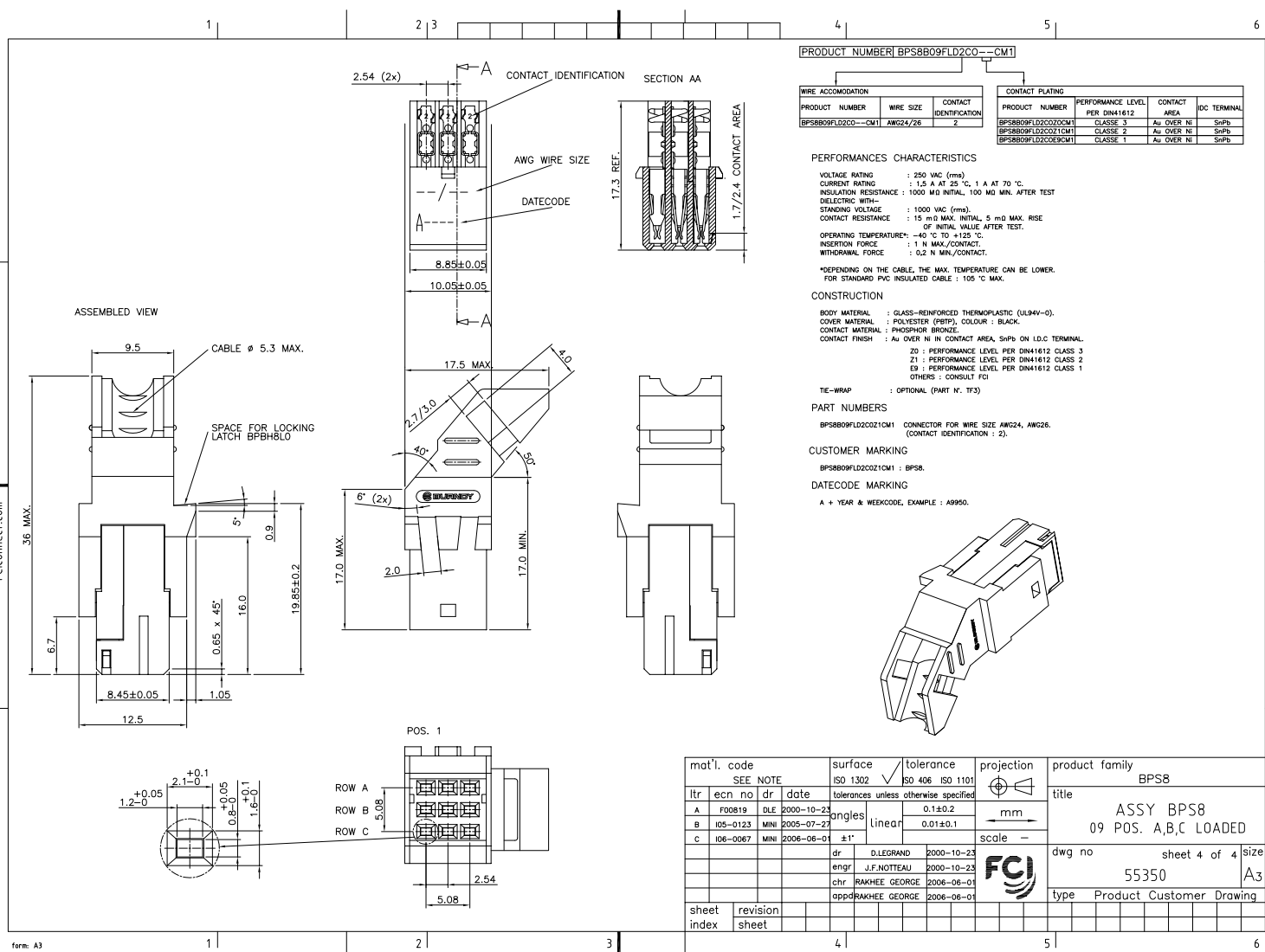
NOTES:
 1. THE "LF" PRODUCTS MEET EUROPEAN UNION DIRECTIVES AND OTHER COUNTRY REGULATIONS AS DESCRIBED IN GS-22-008
 2. LEAD FREE OR ROHS DIRECTIVE LABELING TO BE PROVIDED AS PER GS-14-920 FOR ROHS COMPATIBLE VERSION.

PERFORMANCES CHARACTERISTICS
 VOLTAGE RATING : 250 VAC (rms)
 CURRENT RATING : 1,5 A AT 25 °C, 1 A AT 70 °C.
 INSULATION RESISTANCE : 1000 MΩ INITIAL, 100 MΩ MIN. AFTER TEST
 DIELECTRIC WITHSTANDING VOLTAGE : 1000 VAC (rms).
 CONTACT RESISTANCE : 15 mΩ MAX. INITIAL, 5 mΩ MAX. RISE OF INITIAL VALUE AFTER TEST.
 OPERATING TEMPERATURE* : -40 °C TO +125 °C.
 INSERTION FORCE : 1 N MAX./CONTACT.
 WITHDRAWAL FORCE : 0.2 N MIN./CONTACT.
 *DEPENDING ON THE CABLE, THE MAX. TEMPERATURE CAN BE LOWER. FOR STANDARD PVC INSULATED CABLE : 105 °C MAX.

CONSTRUCTION
 BODY MATERIAL : GLASS-REINFORCED THERMOPLASTIC (UL94V-0).
 COVER MATERIAL : NI PLATED ABS MATERIAL.
 CONTACT MATERIAL : PHOSPHOR BRONZE.
 CONTACT FINISH : Au OVER NI IN CONTACT AREA
 SnPb ON I.D.C. TERMINAL FOR LEADED PRODUCTS.
 Sn (MATTE TIN) ON I.D.C. TERMINAL FOR LEAD FREE PRODUCTS.
 Z0 : PERFORMANCE LEVEL PER DIN41612 CLASS 3
 Z1 : PERFORMANCE LEVEL PER DIN41612 CLASS 2
 E9 : PERFORMANCE LEVEL PER DIN41612 CLASS 1
 OTHERS : CONSULT FCI
 TIE-WRAP : OPTIONAL (PART N° TF3)

PART NUMBERS
 BPS8B09FLD0M0----- CONNECTOR FOR WIRE SIZE AWG28, AWG30. (CONTACT IDENTIFICATION : 0).
 BPS8B09FLD2M0----- CONNECTOR FOR WIRE SIZE AWG24, AWG26 (CONTACT IDENTIFICATION : 2).
 AWG WIRE SIZE MARKING
 BPS8B09FLD0M0-- : 28/30.
 BPS8B09FLD0M0--LF : 28/30.
 BPS8B09FLD2M0-- : 24/26.
 BPS8B09FLD2M0--LF : 24/26.
 DATECODE MARKING
 A + YEAR & WEEKCODE, EXAMPLE : A9950.

mat'l. code	surface	tolerance	projection	product family
SEE NOTE	ISO 1302	ISO 406 ISO 1101		BPS8
lfr	tolerances unless otherwise specified		mm	title
A F00819 DLE 2000-10-23	angles	0.1±0.2	mm	ASSY BPS8
B I05-0123 MINI 2005-07-27	linear	0.01±0.1	mm	09 POS. A,B,C LOADED
C I06-0067 MINI 2006-08-01	±1°		scale -	dwg no 55350 sheet 3 of 4 size A3
	dr	D.LEGRAND 2000-10-23		type Product Customer Drawing
	engr	J.F.NOTTEAU 2000-10-23		
	chr	RAKHEE GEORGE 2006-06-01		
	appd	RAKHEE GEORGE 2006-06-01		
sheet index	revision sheet			



PRODUCT NUMBER [BPS8B09FLD2C0--CM1]

WIRE ACCOMMODATION			CONTACT IDENTIFICATION			CONTACT PLATING		
PRODUCT NUMBER	WIRE SIZE	CONTACT IDENTIFICATION	PRODUCT NUMBER	PERFORMANCE LEVEL	CONTACT AREA	IDC TERMINAL		
BPS8B09FLD2C0--CM1	AWG24/26	2	BPS8B09FLD2C0Z0CM1	CLASS 3	Au OVER Ni	SnPb		
			BPS8B09FLD2C0Z1CM1	CLASS 2	Au OVER Ni	SnPb		
			BPS8B09FLD2C0Z9CM1	CLASS 1	Au OVER Ni	SnPb		

PERFORMANCES CHARACTERISTICS

VOLTAGE RATING : 250 VAC (rms)
 CURRENT RATING : 1.5 A AT 25 °C, 1 A AT 70 °C
 INSULATION RESISTANCE : 1000 MΩ INITIAL, 100 MΩ MIN. AFTER TEST
 DIELECTRIC WITHSTANDING VOLTAGE : 1000 VAC (rms)
 CONTACT RESISTANCE : 15 mΩ MAX. INITIAL, 5 mΩ MAX. RISE OF INITIAL VALUE AFTER TEST.
 OPERATING TEMPERATURE: -40 °C TO +125 °C
 INSERTION FORCE : 1 N MAX./CONTACT
 WITHDRAWAL FORCE : 0.2 N MIN./CONTACT

*DEPENDING ON THE CABLE, THE MAX. TEMPERATURE CAN BE LOWER.
 FOR STANDARD PVC INSULATED CABLE : 105 °C MAX.

CONSTRUCTION

BODY MATERIAL : GLASS-REINFORCED THERMOPLASTIC (UL94V-0).
 COVER MATERIAL : POLYESTER (PETP), COLOUR : BLACK.
 CONTACT MATERIAL : PHOSPHOR BRONZE.
 CONTACT FINISH : Au OVER Ni IN CONTACT AREA, SnPb ON I.D.C TERMINAL.
 Z0 : PERFORMANCE LEVEL PER DIN41612 CLASS 3
 Z1 : PERFORMANCE LEVEL PER DIN41612 CLASS 2
 Z9 : PERFORMANCE LEVEL PER DIN41612 CLASS 1
 OTHERS : CONSULT FCI

TE-WRAP : OPTIONAL (PART N° TF3)

PART NUMBERS

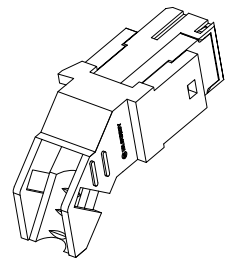
BPS8B09FLD2C0Z1CM1 CONNECTOR FOR WIRE SIZE AWG24, AWG26.
 (CONTACT IDENTIFICATION : 2).

CUSTOMER MARKING

BPS8B09FLD2C0Z1CM1 : BPS8.

DATECODE MARKING

A + YEAR & WEEKCODE, EXAMPLE : A9950.



mat'l. code	surface	tolerance	projection	product family
SEE NOTE	ISO 1302	ISO 406 ISO 1101		BPS8
tr	ecn no	dr	date	title
A	F00819	DLE	2000-10-23	ASSY BPS8
B	I05-0123	MINI	2005-07-27	09 POS. A,B,C LOADED
C	I06-0067	MINI	2006-08-01	
		dr	D.LEGRAND	2000-10-23
		enrg	J.F.NOTTEAU	2000-10-23
		chr	RAKHEE GEORGE	2006-06-01
		app	RAKHEE GEORGE	2006-06-01
sheet	revision			
index	sheet			

product family	BPS8
title	ASSY BPS8 09 POS. A,B,C LOADED
dwg no	55350
sheet 4 of 4	size A3
type	Product Customer Drawing