

REV.	REVISION CHANGES
X1	ASSIGNED PERMANENT DRAWING NUMBER
X2	CHANGED PART NUMBER

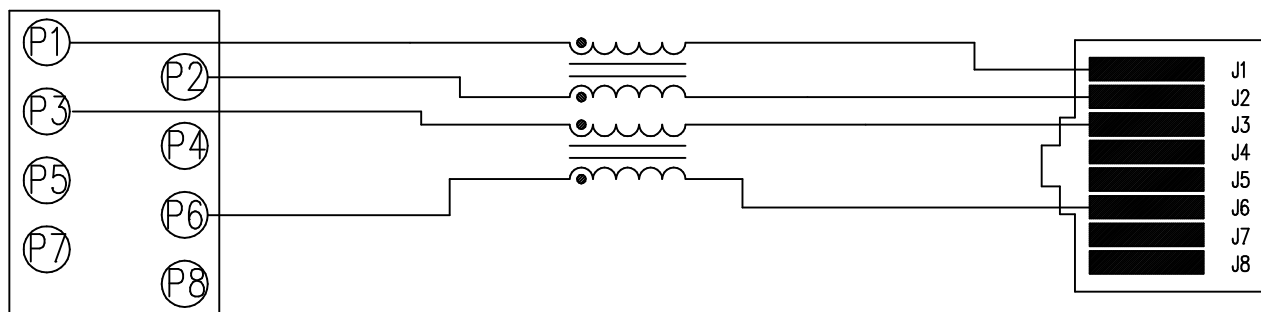
PART NO.: C2009

## ELECTRICAL SPECIFICATIONS

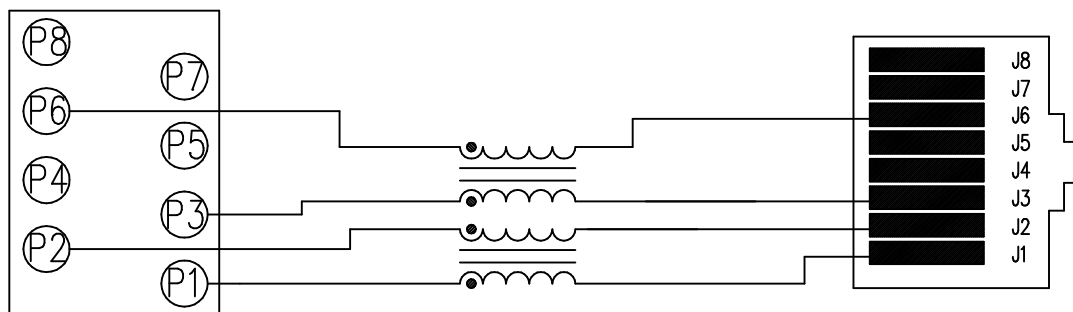
Current Rating (Signal)	1.5 amps @ 25°C
Voltage Rating	150 VAC
Common to Differential Mode Attenuation (-dB typical)	8 @ 1 MHz 17 @ 5 MHz 23 @ 20 MHz 25 @ 70 MHz 22 @ 200 MHz 11 @ 500 MHz
Inductance (.01V, 10 KHz)	65 $\mu$ H (typical)
Direct Current Resistance	0.5 $\Omega$ (max each winding)

- Notes: 1. Pins without electrical connection are omitted.  
 2. All specifications are consistent between upper and lower rows.

## UPPER ROW SCHEMATIC: TYPICAL 10BASE-T COMMON MODE CHOKE

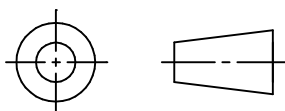


## LOWER ROW SCHEMATIC: TYPICAL 10BASE-T COMMON MODE CHOKE



For Reference Only

## THIRD ANGLE PROJECTION



THIS DRAWING AND THE SUBJECT MATTER SHOWN THEREON ARE CONFIDENTIAL AND THE PROPRIETARY PROPERTY OF STEWART CONNECTOR SYSTEMS ("SCS") AND SHALL NOT BE REPRODUCED, COPIED OR USED IN ANY MANNER WITHOUT PRIOR WRITTEN CONSENT OF "SCS". THE SUBJECT MATTER MAY BE PATENTED OR A PATENT MAY BE PENDING. © SCS