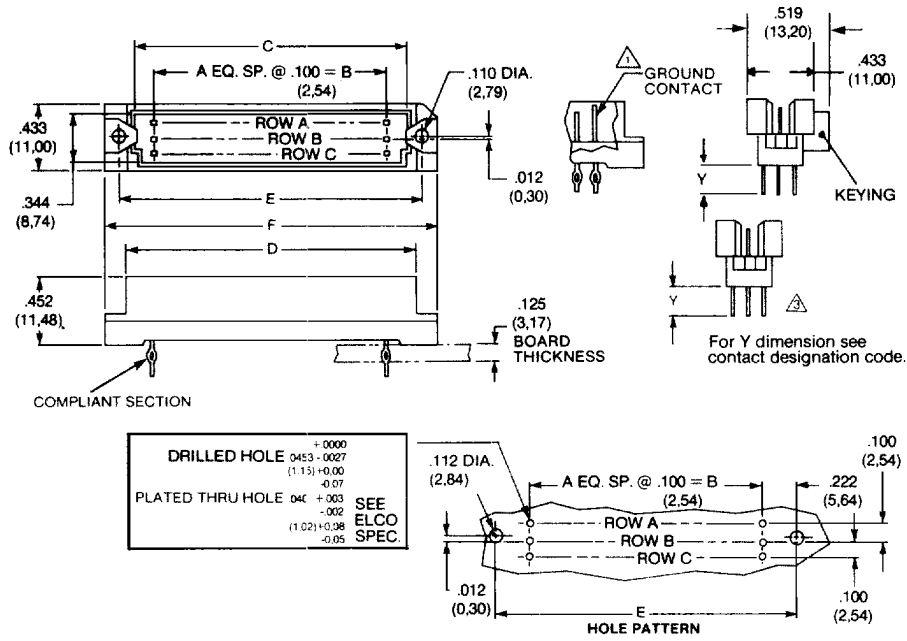
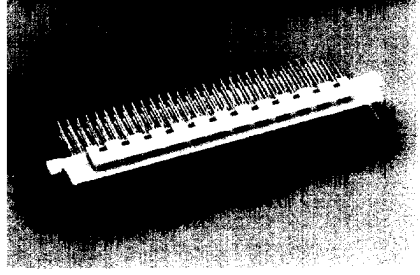


SERIES 8478

PRESS-FIT INVERTED PIN 3-ROW



ORDERING CODE Typical Example: **10 8478 048 001 097**

PREFIX
 10 PIN WITHOUT KEYING
 12 PIN WITH KEYING

SERIES

Compliant press-fit inverted DIN, Style R & 1/2 R

NUMBER OF CONTACT CAVITY POSITIONS

NO. CONTACT POSITIONS	CONTACT ROWS	A	B	C	D	E	F
048	3 (3 x 16)	15	1.500 (38,10)	1.760 (44,70)	1.862 (47,30)	1.968 (49,99)	2.162 (54,92)
096	3 (3 x 32)	31	3.100 (78,74)	3.358 (85,29)	3.461 (87,91)	3.543 (89,99)	3.736 (94,89)
150	3 (3 x 50)	49	4.900 (125,5)	5.154 (130,9)	5.260 (133,6)	5.343 (135,7)	5.536 (140,6)
201	3 (3 x 67)	66	6.600 (167,6)	6.854 (174,1)	6.960 (176,8)	7.043 (178,9)	7.236 (183,8)

CONTACT DESIGNATION CODE

CODE NO.	DESCRIPTION	TERMINAL LENGTH = Y	CODE NO.	DESCRIPTION	TERMINAL LENGTH = Y
001	P.C. contact sq. terminal	.209 (5,30)	004	Wire wrap sq. terminal	.716 (18,20)
△ 101			△ 104		
002	Wire wrap sq. terminal	.366 (9,30)	006	Wire wrap sq. terminal	.519 (13,20)
△ 102			△ 106		
003	Wire wrap sq. terminal	.638 (16,20)	007	Wire wrap sq. terminal	.913 (23,20)
△ 103			△ 107		
			008	Wire wrap sq. terminal	.788 (20,00)
			△ 108		

VARIATION CODE

Class	DIN 41612 Class II	Gold All Over	Gold Contact Area, Tin/Lead Terminal	DIN 41612 Class II	DIN 41612 Class II
Cycle Life	400 Cycles	20 Cycles	400 Cycles	20 Cycles	400 Cycles
VARIATION CODE NUMBERS			CONTACT LOADING POSITIONS		
097	025	025	021	100 (2,54) sq. 1.25 (31,75) sq.	
098	026	026	022	100 (2,54) sq. 1.25 (31,75) sq.	

- △ Ground contact to be in first & last position of row A
 - △ Solid pin available for 1.0mm dia. drilled hole, consult factory.
 - ☒ Recommended for standard applications. Available through ELCO franchised distributors.
- NOTE: For alternate loading and plating, please contact factory.