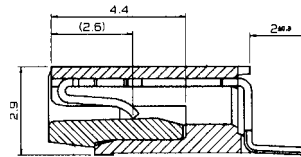
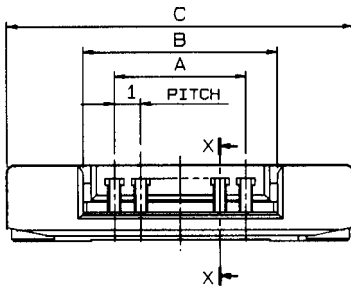
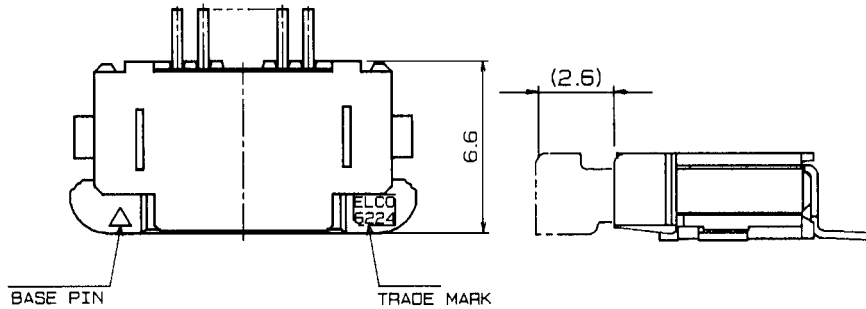


1.00mm Pitch

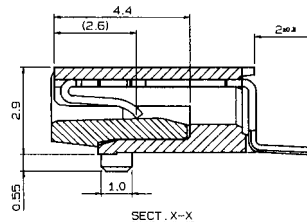
Series 6224



ZIF Right Angle SMT (Top Contact)



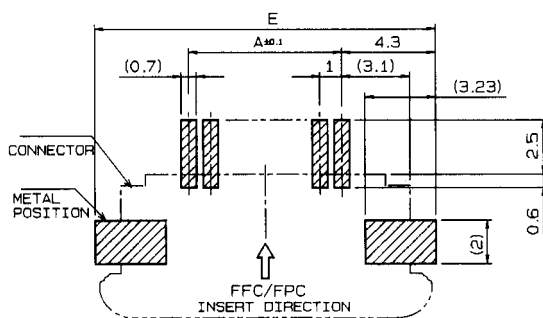
WITHOUT BOSS



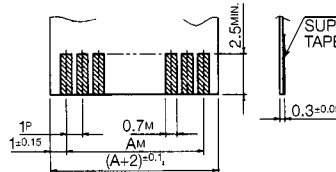
WITH BOSS

Specifications

- Number of Contacts – 5-30
- 1000 Connectors per Tape & Reel
- Voltage – 50 V
- Current Rating – 1.0 amp max.
- Dielectric Withstanding Voltage – 500V RMS min.
- Operating Temperature – (-20°C - +85°C)
- Contact & Metal Tab Material – phosphor bronze (tin-lead plated)
- Slider Material – PPS, black color (UL 94 V-O)
- Insulator Material – PPS, brown color (UL 94 V-O)
- FFC/FPC Thickness – 0.3 ±0.05 mm (0.012 ±0.002")
- Profile Height – 2.90mm (.114")



MOUNTING LAYOUT



FFC, FPC SPECIFICATION

	FFC	FPC
P	±0.05	±0.02
W	±0.03	-0.07 -0.05
M	±0.1	±0.05

ORDERING CODE

XX 6224 0XX XXX 800

- | | |
|------------------------------------|-------------------------------------|
| NUMBER OF CONTACTS (05-30) | FLEX TYPE |
| 08=TAPE AND REEL | 001: STANDARD WITHOUT BOSS |
| 00=TRAY PACKAGING (only with boss) | 002: CARBON PASTE WITHOUT BOSS |
| | 003: WITH BOSS (Tray only) |
| | 004: STANDARD WITH BOSS (Tray only) |

See page 39 and 40 for Tape and Reel detail.

PART NUMBER	NO. OF CONTACTS	A	B	C	D	E	QTY. PER REEL	QTY. PER TRAY
XX 6224 005 XXX 800	5	4.0	6.2	12.2	11.9	12.6	1000	261
006	6	5.0	7.2	13.2	12.9	13.6	1000	243
007	7	6.0	8.2	14.2	13.9	14.6	1000	225
008	8	7.0	9.2	15.2	14.9	15.6	1000	207
009	9	8.0	10.2	16.2	15.9	16.6	1000	198
010	10	9.0	11.2	17.2	16.9	17.6	1000	189
011	11	10.0	12.2	18.2	17.9	18.6	1000	171
012	12	11.0	13.2	19.2	18.9	19.6	1000	162
013	13	12.0	14.2	20.2	19.9	20.6	1000	153
014	14	13.0	15.2	21.2	20.9	21.6	1000	153
015	15	14.0	16.2	22.2	21.9	22.6	1000	144
016	16	15.0	17.2	23.2	22.9	23.6	1000	135
017	17	16.0	18.2	24.2	23.9	24.6	1000	135
018	18	17.0	19.2	25.2	24.9	25.6	1000	126
019	19	18.0	20.2	26.2	25.9	26.6	1000	117
020	20	19.0	21.2	27.2	26.9	27.6	1000	117
021	21	20.0	22.2	28.2	27.9	28.6	1000	108
022	22	21.0	23.2	29.2	28.9	29.6	1000	108
023	23	22.0	24.2	30.2	29.9	30.6	1000	108
024	24	23.0	25.2	31.2	30.9	31.6	1000	99
025	25	24.0	26.2	32.2	31.9	32.6	1000	99
026	26	25.0	27.2	33.2	32.9	33.6	1000	90
027	27	26.0	28.2	34.2	33.9	34.6	1000	90
028	28	27.0	29.2	35.2	34.9	35.6	1000	90
029	29	28.0	30.2	36.2	35.9	36.6	1000	90
XX 6224 030 XXX 800	30	29.0	31.2	37.2	36.9	37.6	1000	81

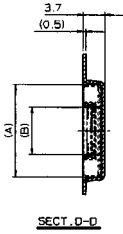
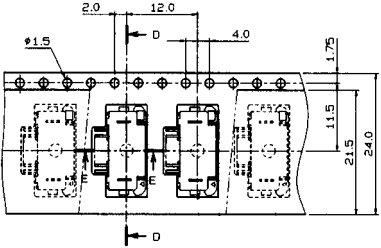
(Dimensions: mm)

1.00mm Pitch

Series 6224

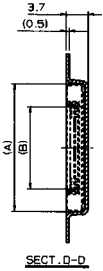
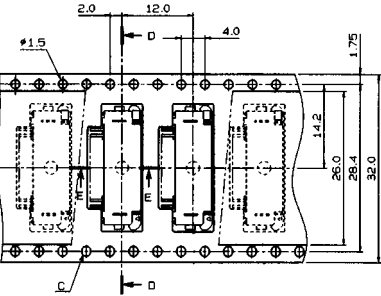


Tape and Reel Specification



Tape Width: 24mm

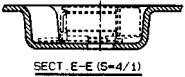
PART NUMBER	NO. OF CONTACTS	A	B	QTY. PER REEL
08 6224 005 001 800	5	12.7	5.0	1000
↑ 006	6	13.7	6.0	1000
↑ 007	7	14.7	7.0	1000
↑ 008	8	15.7	8.0	1000
↑ 009	9	16.7	9.0	1000
↓ 010	10	17.7	10.0	1000
08 6224 011 001 800	11	18.7	11.0	1000



Tape Width: 32mm

PART NUMBER	NO. OF CONTACTS	A	B	QTY. PER REEL
08 6224 012 001 800	12	19.7	12.0	1000
↑ 013	13	20.7	13.0	1000
↑ 014	14	21.7	14.0	1000
↑ 015	15	22.7	15.0	1000
08 6224 016 001 800	16	23.7	16.0	1000

(Dimensions: mm)

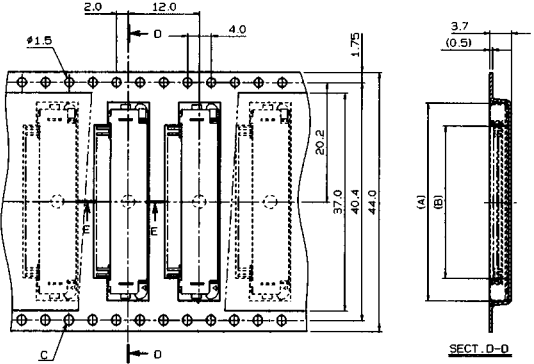


1.00mm Pitch

Series 6224

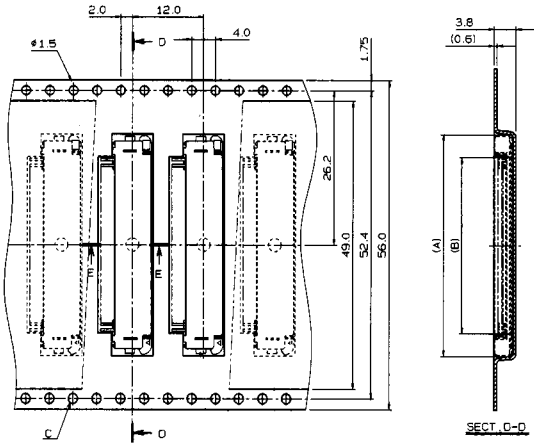


Tape and Reel Specification



Tape Width: 44mm

PART NUMBER	NO. OF CONTACTS	A	B	QTY. PER REEL
08 6224 017 001 800	17	24.7	17.0	1000
↑ 018 ↑	18	25.7	18.0	1000
019	19	26.7	19.0	1000
020	20	27.7	20.0	1000
021	21	28.7	21.0	1000
022	22	29.7	22.0	1000
023	23	30.7	23.0	1000
024	24	31.7	24.0	1000
025	25	32.7	25.0	1000
↓ 026 ↓	26	33.7	26.0	1000
08 6224 027 001 800	27	34.7	27.0	1000



Tape Width: 56mm

PART NUMBER	NO. OF CONTACTS	A	B	QTY. PER REEL
08 6224 028 001 800	28	35.7	28.0	1000
08 6224 029 001 800	29	36.7	29.0	1000
08 6224 030 001 800	30	37.7	30.0	1000

(Dimensions: mm)

