

ID09S33E4GV00LF :
ID09S33E4GV00LF DSUB R/A
STB 9 SOCKET



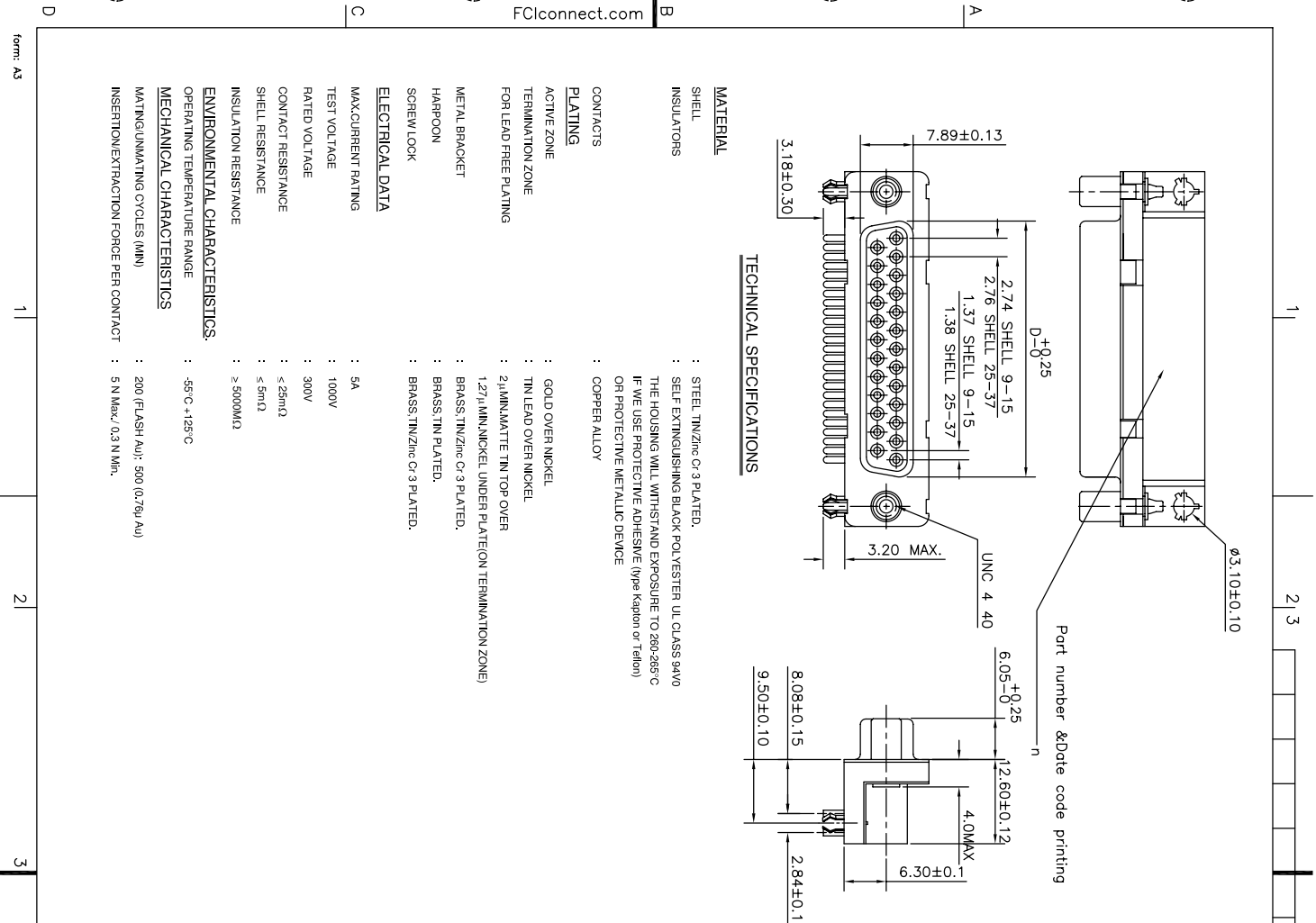
ACTIVE



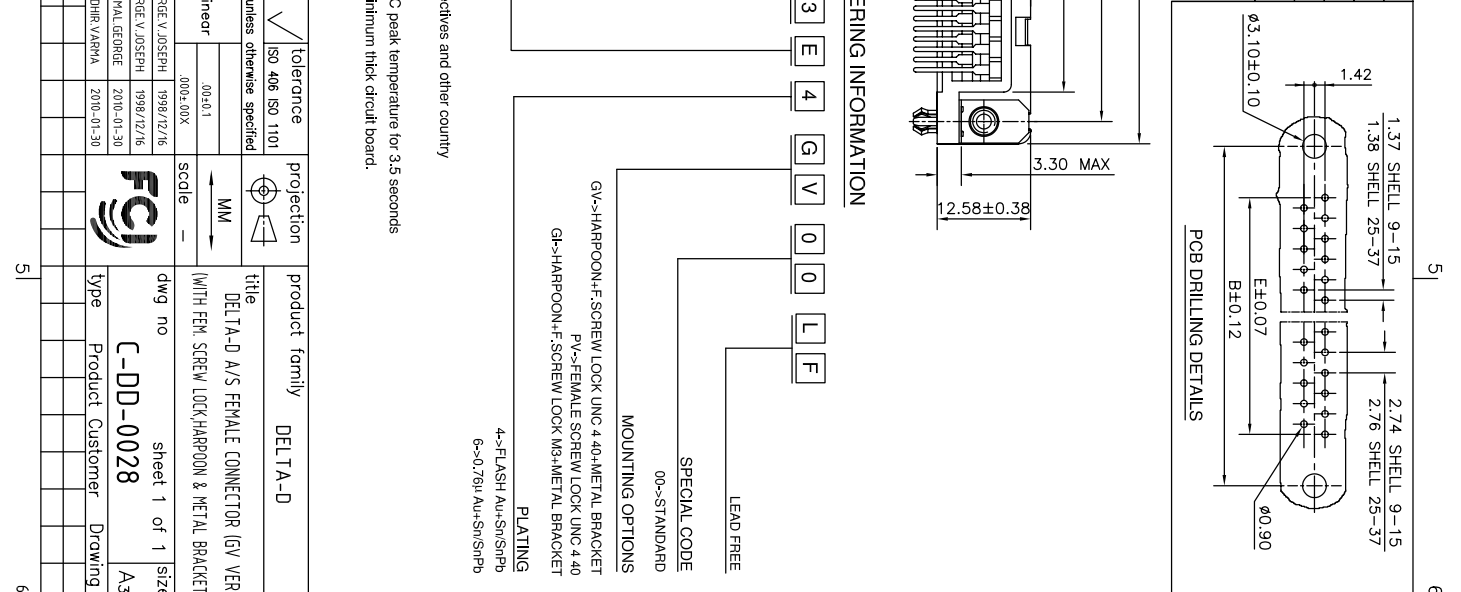
www.fci.com

Comments

The P/N is available however it is not a promoted item, we advise you to contact our customer service for further information in case of existing standard alternative product.



37	69.32	63.50	55.68	54.71	49.68
25	53.03	47.04	39.12	38.25	33.12
15	39.14	33.32	25.18	24.54	19.18
09	30.81	24.99	16.96	16.21	10.96
SHELL	A	B	C	D	E



Sheet	revision	E	1
Index	sheet	1	1

TECHNICAL SPECIFICATIONS

MATERIAL
SHELL : STEEL TIN/ZINC C-3 PLATED.
INSULATORS : SELF EXTINGUISHING BLACK POLYESTER UL CLASS 94V-0
THE HOUSING WILL WITHSTAND EXPOSURE TO 260-285°C
IF WE USE PROTECTIVE ADHESIVE (type Kapton or Teflon)
OR PROTECTIVE METALLIC DEVICE

CONTACTS
PLATING : COPPER ALLOY

ACTIVE ZONE
TERMINATION ZONE : GOLD OVER NICKEL
TERMINATION ZONE : TIN LEAD OVER NICKEL

FOR LEAD FREE PLATING
1.271 MIN. NICKEL UNDER PLATING TERMINATION ZONE)
: 21 MIN. MATTE TIN TOP OVER
: BRASS, TIN PLATED.
: BRASS, TIN/ZINC C-3 PLATED.

ELECTRICAL DATA
MAX. CURRENT RATING : 5A
TEST VOLTAGE : 1000V
RATED VOLTAGE : 300V
CONTACT RESISTANCE : < 25mΩ
SHELL RESISTANCE : < 5mΩ
INSULATION RESISTANCE : ≥ 5000MΩ

ENVIRONMENTAL CHARACTERISTICS
OPERATING TEMPERATURE RANGE : -55°C +125°C

MECHANICAL CHARACTERISTICS
MATING UNMATING CYCLES (MIN) : 200 (FLASH Au), 500 (0.76u Au)
INSERTION/EXTRACTION FORCE PER CONTACT : 5 N Max., 0.3 N Min.

ORDERING INFORMATION

SERIES : I D 2 5 S 3 3 E 4 G V 0 0 L F

NO. OF CONTACTS : 09, 15, 25 & 37

TYPE OF CONTACTS : S-SOCKET

TYPE OF TERMINATION : 33-ANGLED SPRILL
PITCH 2.84 USA
FOOT PRINT 8.08 USA
HEIGHT OF TERMINATION : E3, 18 US STANDARD

LEAD FREE : LEAD FREE

SPECIAL CODE : 00--STANDARD

MOUNTING OPTIONS : GV->HARPOON+ F SCREW LOCK UNC 4 40+METAL BRACKET
PV->FEMALE SCREW LOCK UNC 4 40
GI->HARPOON+ F SCREW LOCK M3+METAL BRACKET

PLATING : 4->FLASH Au+Sn+NiPd
6->0.76u Au+Sn+NiPd

This LF product meets European Union Directives and other country regulations as described in GS-22-008
The housing will withstand exposure to 260°C peak temperature for 3.5 seconds in a wave solder application with a 1.6mm minimum thick circuit board.
Packaging as per GS-14-920

mod'l. code	SEE NOTE 4	surface	ISO 1302	tolerance	ISO 406 ISO 1101	projection	MM	product family	DELTA-D
itr	ecn no dr	date	2006/06/08	tolerances unless otherwise specified					
E	10-0034	NG	2010-01-30	0°±1°	00±0.1	SCDLE			
dr	engr	engr	chr	ipppd					
GEORGE V. JOSEPH	1998/12/16	GEORGE V. JOSEPH	1998/12/16						
NIRPAL GEORGE	2010-01-30	NIRPAL GEORGE	2010-01-30						
SUDHIR VARMA	2010-01-30	SUDHIR VARMA	2010-01-30						
sheet	revision	E	1						
index	sheet	1	1						

title
DELTA-D A/S FEMALE CONNECTOR (GV VER.)
(WITH FEM. SCREW LOCK, HARPOON & METAL BRACKET)

dwg no
C-DD-0028

sheet 1 of 1

size
A3

Product Customer Drawing