

**NOTES:**  
 1. THE "LF" PRODUCTS MEET EUROPEAN UNION DIRECTIVES AND OTHER COUNTRY REGULATIONS AS DESCRIBED IN GS-22-008  
 2. LEAD FREE OR ROHS DIRECTIVE LABELING TO BE PROVIDED AS PER GS-14-920 FOR ROHS COMPATIBLE VERSION.

WIRE ACCOMMODATION			CONTACT PLATING	
PRODUCT NUMBER	WIRE SIZE	CONTACT IDENTIFICATION	PLATING CODE	PERFORMANCE LEVEL PER DIN41612
BPS8B21FL000-LF	AWG28/30	0	Z0	CLASS 3
BPS8B21FL020-LF	AWG24/26	2	Z1	CLASS 2
			E9	CLASS 1

**PERFORMANCES CHARACTERISTICS**  
 VOLTAGE RATING : 250 VAC (rms)  
 CURRENT RATING : 1.5 A AT 25 °C, 1 A AT 70 °C  
 INSULATION RESISTANCE : 1000MΩINITIAL, 100MΩMIN. AFTER TEST  
 DIELECTRIC WITH-  
 STANDING VOLTAGE : 1000 VAC (rms)  
 CONTACT RESISTANCE : 15mΩMAX. INITIAL, 5mΩMAX. RISE OF INITIAL VALUE AFTER TEST.  
 OPERATING TEMPERATURE: -40 °C TO +125 °C  
 INSERTION FORCE : 1 N MAX./CONTACT  
 WITHDRAWAL FORCE : 0.2 N MIN./CONTACT  
 \*DEPENDING ON THE CABLE, THE MAX. TEMPERATURE CAN BE LOWER. FOR STANDARD PVC INSULATED CABLE : 105 °C MAX.

**CONSTRUCTION**  
 BODY MATERIAL : GLASS-REINFORCED THERMOPLASTIC (UL94V-0).  
 COVER MATERIAL : POLYESTER (PBT), COLOUR : BLACK.  
 CONTACT MATERIAL : PHOSPHOR BRONZE.  
 CONTACT FINISH : Au OVER Ni IN CONTACT AREA  
 Sn (MATT TIN) ON I.D.C. TERMINAL  
 Z0 : PERFORMANCE LEVEL PER DIN41612 CLASS 3  
 Z1 : PERFORMANCE LEVEL PER DIN41612 CLASS 2  
 E9 : PERFORMANCE LEVEL PER DIN41612 CLASS 1  
 OTHERS : CONSULT FCI  
 TI-WRAP : OPTIONAL PART N° TFS.

**PART NUMBERS**  
 BPS8B21FL000-LF CONNECTOR FOR WIRE SIZE AWG28, AWG30. (CONTACT IDENTIFICATION : 0).  
 BPS8B21FL020-LF CONNECTOR FOR WIRE SIZE AWG24, AWG26 (CONTACT IDENTIFICATION : 2).

**AWG WIRE SIZE MARKING**  
 BPS8B21FL000-LF : 28/30.  
 BPS8B21FL020-LF : 24/26.  
**DATECODE MARKING**  
 A + YEAR & WEEKCODE, EXAMPLE : A9950.

mat'l. code	surface	tolerance	projection	product family
SEE NOTE	ISO 1302	ISO 406 ISO 1101	mm	BPS8
tolerances unless otherwise specified	angles	linear	scale	title
		±1°		ASSY BPS8
				21 POS. A,B,C LOADED
				dwg no
				55355
				sheet 1 of 3
				A3
				type Product Customer Drawing

PRODUCT NUMBER BPS8B21FLD-00--LF

WITH "LF" SUFFIX LEAD FREE OR RoHS COMPATIBLE PRODUCT

WIRE ACCOMODATION		
PRODUCT NUMBER	WIRE SIZE	CONTACT IDENTIFICATION
BPS8B21FLD000--LF	AWG28/30	0
BPS8B21FLD200--LF	AWG24/26	2

CONTACT PLATING	
PLATING CODE	PERFORMANCE LEVEL PER DIN41612
Z0	CLASS 3
Z1	CLASS 2
E9	CLASS 1

**NOTES:**

1. THE "LF" PRODUCTS MEET EUROPEAN UNION DIRECTIVES AND OTHER COUNTRY REGULATIONS AS DESCRIBED IN GS-22-008
2. LEAD FREE OR RoHS DIRECTIVE LABELING TO BE PROVIDED AS PER GS-14-920 FOR RoHS COMPATIBLE VERSION.

**PERFORMANCES CHARACTERISTICS**

VOLTAGE RATING : 250 VAC (rms)  
 CURRENT RATING : 1,5 A AT 25 °C, 1 A AT 70 °C.  
 INSULATION RESISTANCE : 1000MΩINITIAL, 100MΩMIN. AFTER TEST  
 DIELECTRIC WITH-  
 STANDING VOLTAGE : 1000 VAC (rms).  
 CONTACT RESISTANCE : 15 mΩMAX. INITIAL, 5mΩMAX. RISE OF INITIAL VALUE AFTER TEST.

OPERATING TEMPERATURE\*: -40 °C TO +125 °C.  
 INSERTION FORCE : 1 N MAX./CONTACT.  
 WITHDRAWAL FORCE : 0,2 N MIN./CONTACT.

\*DEPENDING ON THE CABLE, THE MAX. TEMPERATURE CAN BE LOWER. FOR STANDARD PVC INSULATED CABLE : 105 °C MAX.

**CONSTRUCTION**

BODY MATERIAL : GLASS-REINFORCED THERMOPLASTIC (UL94V-0).  
 CONTACT MATERIAL : PHOSPHOR BRONZE.  
 CONTACT FINISH : Au OVER Ni IN CONTACT AREA  
 Sn (MATT TIN) ON I.D.C. TERMINAL

Z0 : PERFORMANCE LEVEL PER DIN41612 CLASS 3  
 Z1 : PERFORMANCE LEVEL PER DIN41612 CLASS 2  
 E9 : PERFORMANCE LEVEL PER DIN41612 CLASS 1  
 OTHERS : CONSULT FCI

**PART NUMBERS**

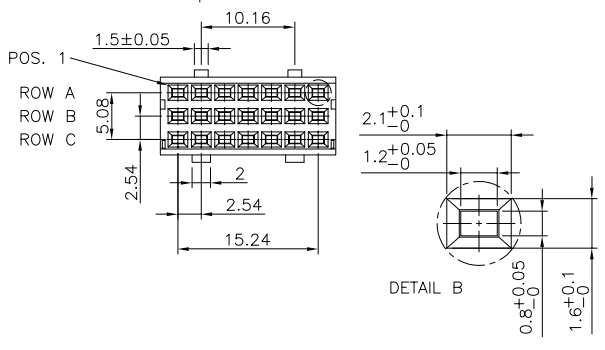
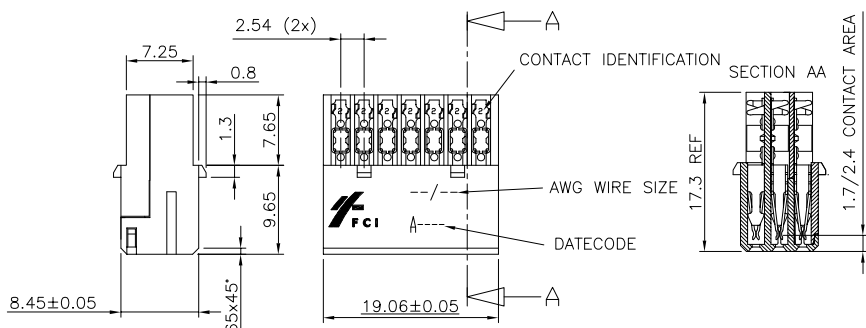
BPS8B21FLD000--LF CONNECTOR FOR WIRE SIZE AWG28, AWG30. (CONTACT IDENTIFICATION : 0).  
 BPS8B21FLD200--LF CONNECTOR FOR WIRE SIZE AWG24, AWG26 (CONTACT IDENTIFICATION : 2).

**AWG WIRE SIZE MARKING**

BPS8B21FLD000--LF : 28/30  
 BPS8B21FLD200--LF : 24/26

**DATECODE MARKING**

A + YEAR & WEEKCODE, EXAMPLE : A9950.

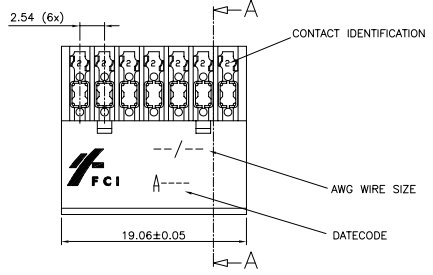
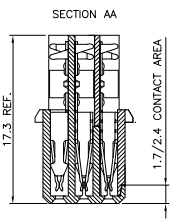


mat'l. code	SEE NOTE	surface	tolerance	projection	product family
ISO 1302	ISO 406	ISO 1101	ISO 1101	BPS8	
tr. ecn no	dr date	tolerances unless otherwise specified	angles	linear	mm
A F00819	DLE 2000-10-19	0.1±0.2			
B 105-0123	MINI 2005-07-27	0.01±0.1			
C 106-0067	MINI 2006-06-01	±1°			
D 107-0081	KR 2007-06-28	dr	D.LEGRAND	2000-10-19	
			enrg	J.F.NOTTEAU	2000-10-19
			chr	RAKHEE GEORGE	2007-06-28
			appd	RAKHEE GEORGE	2007-06-28
sheet index	revision sheet				

title ASSY BPS8  
21 POS. A,B,C LOADED

dwg no 55355 sheet 2 of 3 size A3

type Product Customer Drawing

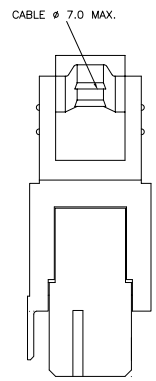
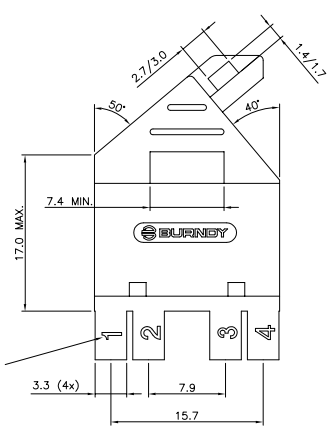
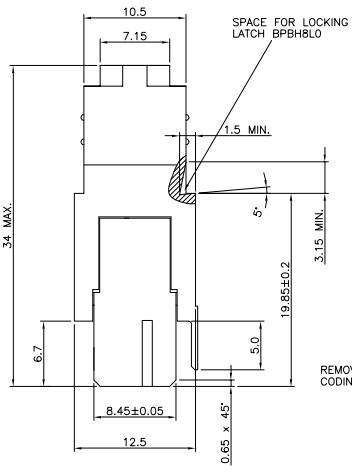


NOTES:  
1. THE "LF" PRODUCTS MEET EUROPEAN UNION DIRECTIVES AND OTHER COUNTRY REGULATIONS AS DESCRIBED IN GS-22-008  
2. LEAD FREE OR RfHS DIRECTIVE LABELING TO BE PROVIDED AS PER GS-14-920 FOR RfHS COMPATIBLE VERSION.

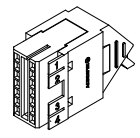
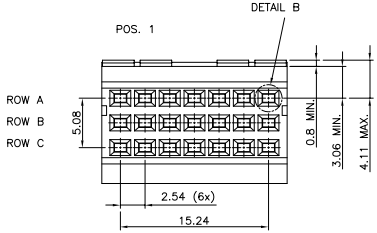
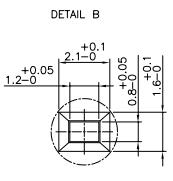
PRODUCT NUMBER BPS8B21FLD-MO--LF WITH "LF" SUFFIX LEAD FREE OR RfHS COMPATIBLE PRODUCT

WIRE ACCOMMODATION		CONTACT IDENTIFICATION
PRODUCT NUMBER	WIRE SIZE	
BPS8B21FLD0M--LF	AWG28/30	0
BPS8B21FLD2M--LF	AWG24/26	2

CONTACT PLATING	
PLATING CODE	PERFORMANCE LEVEL PER DIN41612
Z0	CLASS 3
Z1	CLASS 2
E9	CLASS 1



PERFORMANCES CHARACTERISTICS  
 VOLTAGE RATING : 250 VAC (rms)  
 CURRENT RATING : 1,5 A AT 25 °C, 1 A AT 70 °C  
 INSULATION RESISTANCE : 1000MΩINITIAL, 100MΩMIN. AFTER TEST  
 DIELECTRIC WITHSTANDING VOLTAGE : 1000 VAC (rms)  
 CONTACT RESISTANCE : 15mΩMAX. INITIAL, 5mΩMAX. RISE OF INITIAL VALUE AFTER TEST.  
 OPERATING TEMPERATURE: -40 °C TO +125 °C  
 INSERTION FORCE : 1 N MAX./CONTACT  
 WITHDRAWAL FORCE : 0,2 N MIN./CONTACT  
 \*DEPENDING ON THE CABLE, THE MAX. TEMPERATURE CAN BE LOWER.  
 FOR STANDARD PVC INSULATED CABLE : 105 °C MAX.  
 CONSTRUCTION  
 BODY MATERIAL : GLASS-REINFORCED THERMOPLASTIC (UL94V-0).  
 COVER MATERIAL : NI PLATED ABS MATERIAL  
 CONTACT MATERIAL : PHOSPHOR BRONZE.  
 CONTACT FINISH : Au OVER Ni IN CONTACT AREA  
 Sn (MATT TIN) ON I.D.C. TERMINAL  
 Z0 : PERFORMANCE LEVEL PER DIN41612 CLASS 3  
 Z1 : PERFORMANCE LEVEL PER DIN41612 CLASS 2  
 E9 : PERFORMANCE LEVEL PER DIN41612 CLASS 1  
 OTHERS : CONSULT FCI



mat'l. code	surface	tolerance	projection	product family
SEE NOTE	ISO 1302	ISO 406 ISO 1101		BPS8
itr. ecn no dr date	tolerances unless otherwise specified	angles	linear	title
A F00819 DLE 2000-10-23		0.1±0.2		ASSY BPS8
B 105-0123 MINI 2005-07-27		0.01±0.1		21 POS. A,B,C LOADED
C 106-0067 MINI 2006-06-01	±1°		scale	dwg no
D 107-0081 KR 2007-06-28	dr	D.LEGRAND 2000-10-23		55355
	enrg	J.F.NOTTEAU 2000-10-23		sheet 3 of 3
	chr	RAKHEE GEORGE 2007-06-28		size
	app	RAKHEE GEORGE 2007-06-28		A3
sheet index	revision sheet			type Product Customer Drawing