

2000 Slide Switches - up to 5 position 10A 250Vac



- ▶ Slide switches
- ▶ Ratings up to 16A, 250V ac
- ▶ PCB and solder terminals
- ▶ 2, 3, 4 and 5 position
- ▶ Choice of circuits
- ▶ Choice of actuators

Approvals and specifications



10A 250Vac T85
6(3)A 250Vac T85



UL CSA 16A 250Vac Non Inductive
UL CSA 4A 300Vac
UL 65°C, file no. E45221, CSA file no. LR10990

μ contact gap

Please specify: Standard action (SP116) or Light action (SP118).
2000 series lubrication is inorganic and does not degrade plastics.

Technical data on pages 4 & 5.

T 2 2 20 5 C ---

TERMINAL SERIES POSITIONS CIRCUIT SLIDER BODY PRINT, COLOUR, ETC

slide switches

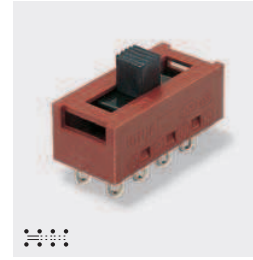
TERMINAL	SERIES	POS'N	CIRCUIT <small>Viewed from back</small>	SLIDER	
K 2.8 x 0.8 R 2.8 x 0.8 T Solder X PCB 0.8 Sq. Y PCB 0.8 Sq. For mounting stability switches have extra "support" terminals * Nominal - Dimension varies with body type. For exact figure call sales	2	2 Switching positions	10		0 5.8Sq 6.0 21.0 6 5.8Sq 6.0 15.5
			20		D 5.8Sq 9.5 15.5 L Limited travel on 2 pos 8.0 7.9 15.5 5.8 2.3 Blade
			30		1 Not 2 position 7.9 6.0 36.8 5.8 7 5.8Sq 4.0 15.5
			40		E Limited travel on 2 pos 3.2 7.0 9.2 2.0 Blade 21.0 5.8 N 4.2 7.5 21.0 5.8
			10		2 5.8Sq 1.7 21.0 Ø2.0 Hole
			20		9 5.8Sq 3.5 15.5
		3 Switching positions	30		G Not 2 position 7.9 6.0 36.8 1.4 Slot 5.9 P Limited travel on 2 pos 7.7 4.0 15.5 5.6
			40		H Not 2 position 5.7Sq 4.7 21.0 R 2.4 4.0 15.5 5.8 Ø5.0
			10		3 5.5 5.8Sq 2.4 Slot 11.0 15.5 A 5.8Sq 9.5 21.0 H 5.7Sq 4.7 21.0
			20		4 Ø2.5 3.0 15.5 5.8Sq B Not 2 position Ø2.9 3.0 36.8 5.8Sq J Not 2 position 5.7Sq 4.7 36.5
			30		5 Also with legend 5.8Sq 1.0 21.0 Ø2.0 Hole C 5.8Sq 2.3 13.5 Ø2.0 Hole K Limited travel on 2 pos 8.0 5.4 15.5 5.8 2.3 Blade
			40		S Limited travel on 2 pos 8.0 9.0 15.5 5.8 2.2 Blade T 5.8Sq 4.6 15.5 5.8



X22205C ---



T2220EC ---



T23206A ---



T24306A ---



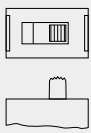
T25302A ---



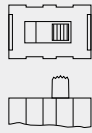
T25100A ---

BODY

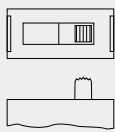
C 2 positions



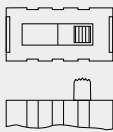
H 2 positions



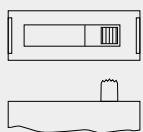
A 3 positions



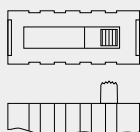
H 3 positions



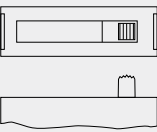
A 4 positions



H 4 positions



A 5 positions



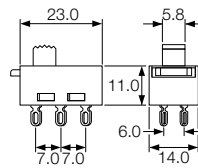
OPTIONS

Colour

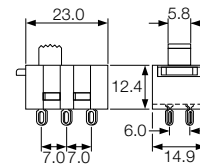
For custom slider colours call sales. A full range is available for large orders

DIMENSIONS (mm)

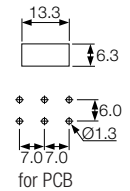
2 Position C body



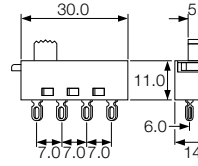
2 Position H body



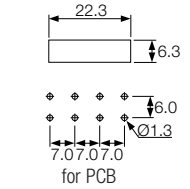
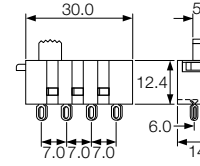
Cut-out/PCB Matrix



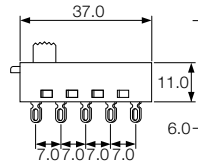
3 Position A body



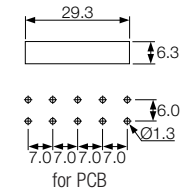
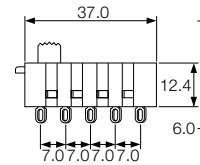
3 Position H body



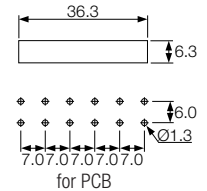
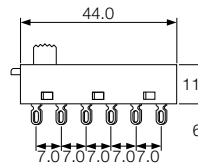
4 Position A body



4 Position H body



5 Position A body



slide switches