

2200 SERIES

ILLUMINATED AND NON-ILLUMINATED PUSHBUTTON SWITCHES

Specifications

ELECTRICAL SPECIFICATIONS

- Max. current/voltage rating with resistive load - UL-CSA approved ratings :
6A 250VAC - 6A 125VAC
- Initial contact resistance : 10 mΩ max. at 1A 2VDC
- Insulation resistance : 1.000 MΩ min. at 500VDC
- Dielectric strength : 2.500 Vrms 50 Hz min.
- Electrical life : 10.000 cycles at full load
- Illuminated version with lamp wired separately :
 - filament lamps 6, 12 and 24 V, replaceable, type T5 with flanged base, 5.000 h 1W
 - electrode lamps, non replaceable, with built-in resistance, 7.000 h :
 - . neon lamp for 110 and 220VAC and cap colours other than green or blue
 - . fluorescent green lamp for 110 and 220VAC and green or blue cap

GENERAL SPECIFICATIONS

- Panel thickness : 0,8 to 3 mm (.031 to .118) see table opposite
- Operating temperature : -20°C to +55°C

APPROVALS

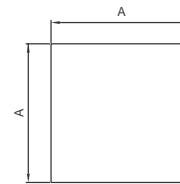


Availability : all models.
Marking : all models are standard marked.

MATERIALS

- Case : polyamide 6-6
- Cap : polycarbonate
- Base : polyamide 6-6
- Contacts : silver inlay

PANEL CUT-OUT
according to panel thickness



Dimension "A"	Panel thickness
19 -0/+0,3 (.748 -0/+0.011)	0,8 to 1,2 (.031 to .047)
19,3 -0/+0,1 (.759 -0/+0.003)	1,3 to 2 (.051 to .078)
19,5 -0/+0,1 (.767 -0/+0.003)	2,1 to 3 (.082 to .118)

K

Dimensions : first dimensions are in mm while inches are shown as bracketted numbers.

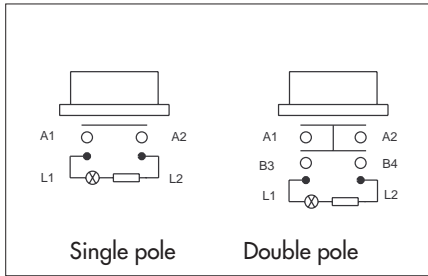


Packaging unit : 20 pieces.

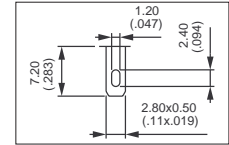
2200 SERIES

ILLUMINATED AND NON-ILLUMINATED PUSHBUTTON SWITCHES

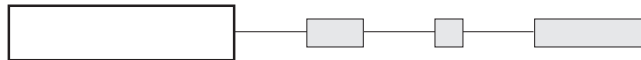
Solder lug/quick-connect terminals 2,8 x 0,5 (.110 x .019)



- Momentary or latching action
On latching action type, the button remains in low position when "ON"
- 1 and 2 pole configurations
- Matching indicators, series 2100 :
consult factory



MODEL STRUCTURE



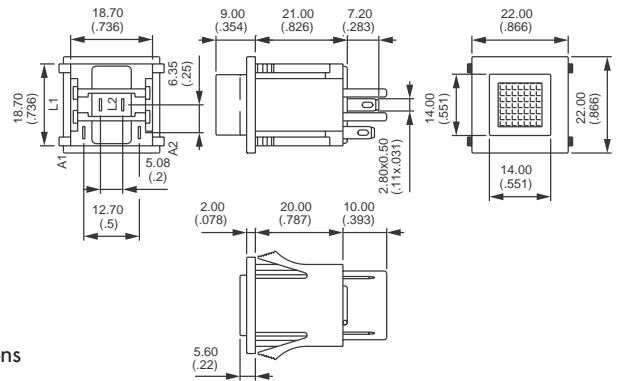
Single pole



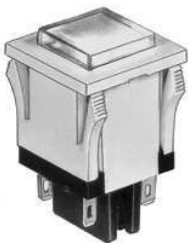
2231A
2233A



With chrome plated bezel (code 8) dimensions are 22,8 x 22,8 (.897 x .897)



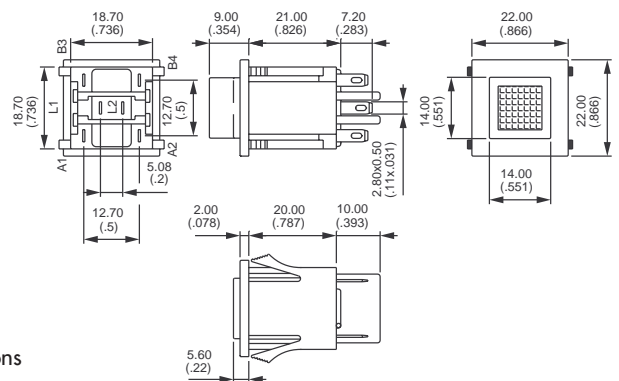
Double pole



2241A
2243A



With chrome plated bezel (code 8) dimensions are 22,8 x 22,8 (.897 x .897)



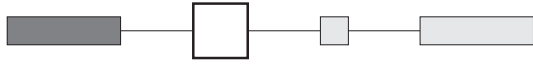
Panel cut-out : see specifications on previous page.

2200 SERIES

ILLUMINATED AND NON-ILLUMINATED PUSHBUTTON SWITCHES



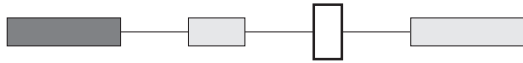
FRAME COLOURS



- 2 Black
- 4 Grey
- 8 Chrome plated bezel mounted on frame

NOTE : with chrome plated bezel, dimensions are 22,8 x 22,8 (.897 x .897)

CAP COLOURS



Complete box with one of the codes below.
To order a product without cap, complete above box with code 0.
To order caps separately, use their part number (U...)

For illuminated switches

	Without cap	Blue*	Green*	Clear	Yellow	Red	White	Orange
P/N	-	U671	U673	U674	U675	U676	U677	U679
Code	0	1	3	4	5	6	7/1	9

* with green or blue cap, use fluorescent lamp only.

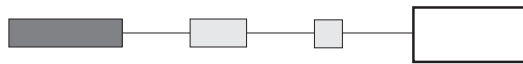
For non-illuminated switches

	Without cap	Blue	Black	Green	Grey	Yellow	Red	White	Orange
P/N	-	U1281	U1282	U1283	U1284	U1285	U1286	U1287	U1289
Code	0	1	2	3	4	5	6	7/1	9

Cap marking available, consult factory.

LAMPS

K



* Use P/N to order filament lamps separately.

Code	Designation	P/N *
L6V	Filament lamp 6V - replaceable from front - Type T5 with glass socket - 5.000 h min. - 1W	U776
L12V	Filament lamp 12V - replaceable from front - Type T5 with glass socket - 5.000 h min. - 1W	U777
L24V	Filament lamp 24-28V - replaceable from front - Type T5 with glass socket - 5.000 h min. - 1W	U778
L110V	Neon lamp 110VAC - non replaceable - with built-in resistor - 7.000 h min.	-
L220V	Neon lamp 220VAC - non replaceable - with built-in resistor - 7.000 h min.	-
L110V3	Fluorescent green lamp 110VAC - for green or blue rocker - 7.000 h min.	-
L220V3	Fluorescent green lamp 220VAC - for green or blue rocker - 7.000 h min.	-
LF	Case without lamp - a filament lamp 6, 12 or 24V can be mounted afterwards	-
L0	Non illuminated pushbutton switch	-