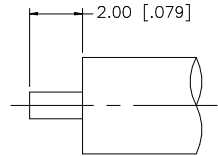
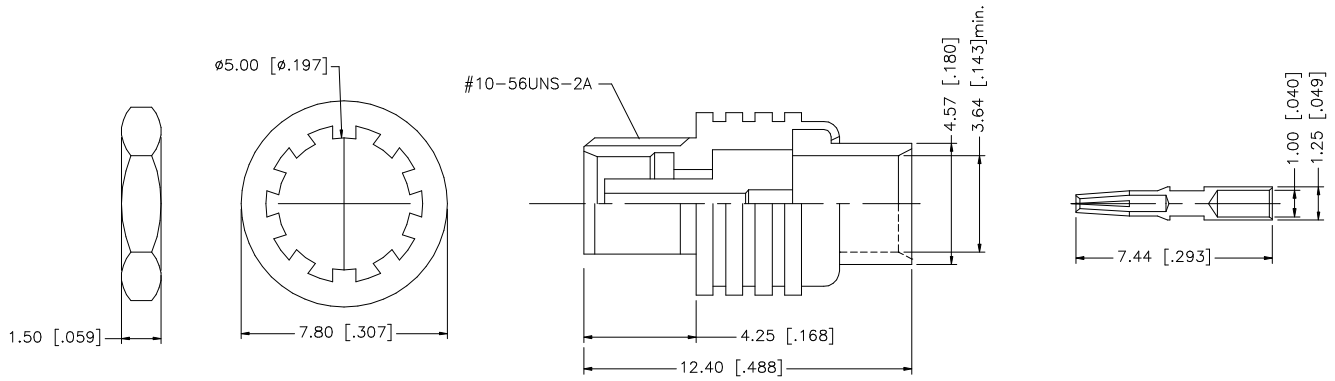


REV.	DATE	DESCRIPTION
NC	06/10/03	INITIAL RELEASE



RECOMMENDED CABLE STRIPPING DIMENSIONS



- NOTE:
- CONTACT PIN TO SOLDER
 - MAX. PANEL THICKNESS = 1.35mm

				UNLESS OTHERWISE SPECIFIED DIMENSIONS ARE IN MILLIMETERS, DIMENSIONS IN [] ARE IN INCHES AND FOR CUSTOMER REFERENCE ONLY.	APPROVALS	DATE	Amphenol Connex							
8					DRAWN	G.R.S.					06/10/03	PART DESCRIPTION MCX BULKHEAD DIRECT SOLDER JACK (.141" SEMI RIGID CABLE)		
7					CHECKED			PART NO. 252185						
6					ISSUED							DWG. NO. 252185.DWG		
5	HEX NUT	BRASS	GOLD	1	SHEET	1 OF 1		REV.	NC	SIZE	A			
4	LOCK WASHER	BRASS	GOLD	1	CAD FILE				C:/252/252185.DWG					
3	CONTACT PIN	BER. COPPER	GOLD	1	DO NOT SCALE DRAWING									
2	INSULATOR	TEFLON	NATURAL	1										
1	BODY	BRASS	GOLD	1										
DESCRIPTION				MATERIAL	FINISH	QTY								

UNLESS OTHERWISE SPECIFIED DIMENSIONS ARE IN MILLIMETERS, DIMENSIONS IN [] ARE IN INCHES AND FOR CUSTOMER REFERENCE ONLY.

UNLESS OTHERWISE SPECIFIED TOLERANCES FOR MILLIMETERS ARE:
0.5 - 8mm ± 0.20mm
8 - 30mm ± 0.40mm
30 - 120mm ± 0.50mm

UNLESS OTHERWISE SPECIFIED TOLERANCES FOR INCHES ARE:
.020 - .315 = ± 0.007"
.315 - 1.180 = ± 0.015"
1.180 - 4.724 = ± 0.020"

Amphenol Connex

PART DESCRIPTION
MCX BULKHEAD DIRECT SOLDER JACK (.141" SEMI RIGID CABLE)

PART NO.
252185

DWG. NO. 252185.DWG

REV. NC SIZE A SCALE NA