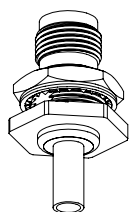
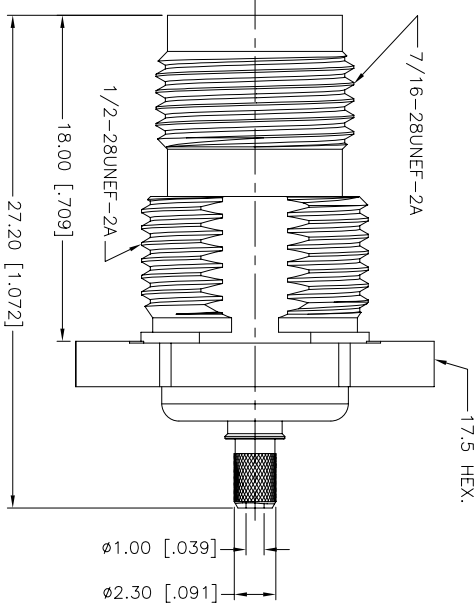
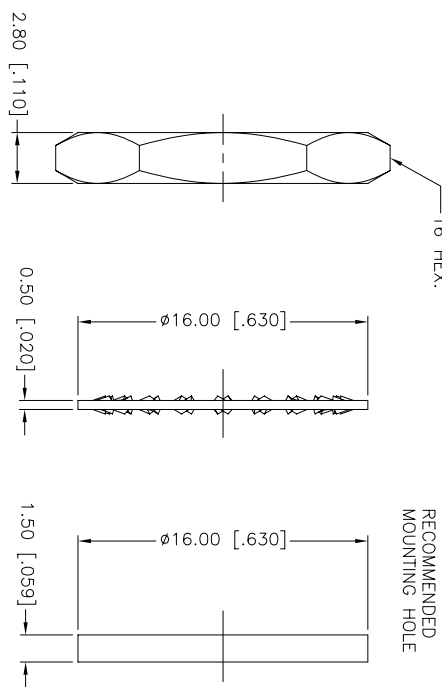
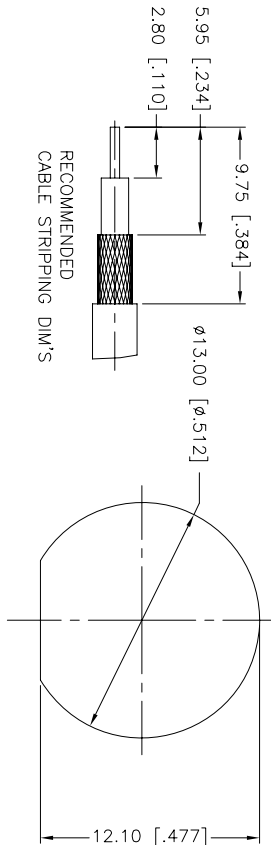
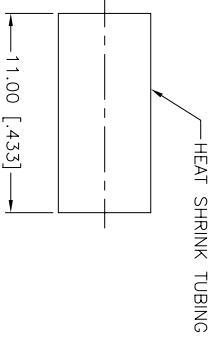
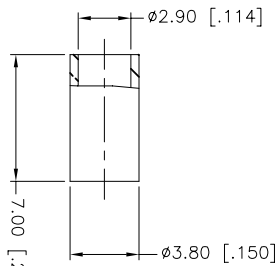
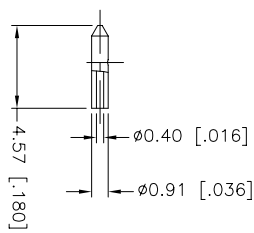


REV.	DATE	ECR NO.	DESCRIPTION
NC	02/23/10	XXXXXX	INITIAL RELEASE



SCALE 1.000



1. CRIMPED FERRULE
HEX CRIMP SIZE .128"
2. CRIMPED CONTACT PIN
SQ. CRIMP SIZE 0.7(mm)
3. MAX. PANEL THICKNESS=4.2mm

Amphenol Connex

**TNC BULKHEAD CRIMP JACK IP-67 COMPLIANT
(FOR RG-178B/U, RG-196A/U CABLE)**

UNLESS OTHERWISE SPECIFIED DIMENSIONS ARE INCHES AND FOR CUSTOMER REFERENCE ONLY. TOLERANCES FOR MILLIMETERS ARE:	APPROVALS	DATE	PART DESCRIPTION
0.5 - 8mm ± 0.20mm	DRAWN	02/23/10	TNC BULKHEAD CRIMP JACK IP-67 COMPLIANT (FOR RG-178B/U, RG-196A/U CABLE)
8 - 30mm ± 0.40mm	CHECKED		
30 - 120mm ± 0.50mm	ISSUED		
	SHEET	1 OF 1	
UNLESS OTHERWISE SPECIFIED DIMENSIONS ARE INCHES AND FOR CUSTOMER REFERENCE ONLY. TOLERANCES FOR MILLIMETERS ARE:	PART NO. 122370-11		
0.20 - .315 ± 0.007"	DWG. NO. 122370-11.DWG		
.315 - 1.180 ± 0.015"	REV. NC		
1.180 - 4.724 ± 0.020"	SIZE A		
	SCALE NA		
	CAD FILE C:/CONNEX/122370-11.DWG		
	DO NOT SCALE DRAWING		

DESCRIPTION	MATERIAL	FINISH	QTY
CONTACT PIN	BRASS	GOLD	1
INSULATOR	PTFE	NATURAL	1
BODY	BRASS	NICKEL	1