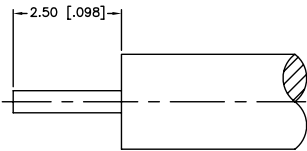
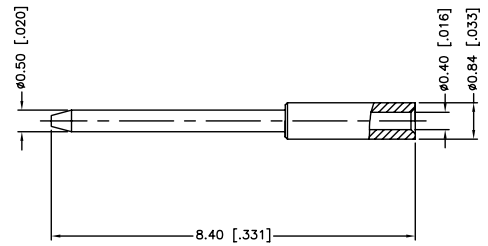
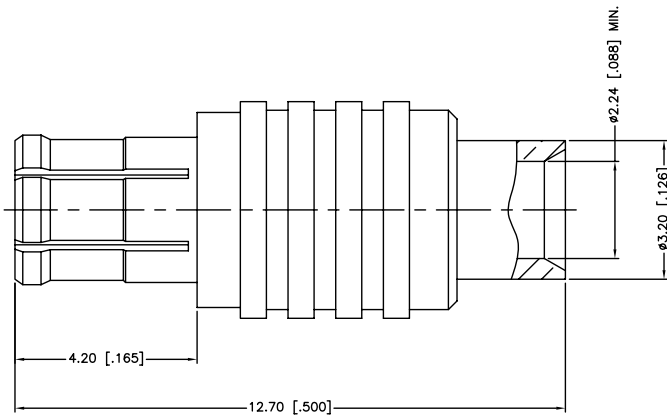


REV.	DATE	ECR NO.	DESCRIPTION
A	01/30/04	XXXXXX	UPDATE DRAWING FORMAT
B	05/03/11	2171	CHANGE THE PART NO. TO 252107-75



RECOMMENDED  
CABLE STRIPPING DIM'S



1. CONTACT PIN TO SOLDER

UNLESS OTHERWISE SPECIFIED DIMENSIONS ARE IN MILLIMETERS. DIMENSIONS IN [ ] ARE IN INCHES AND FOR CUSTOMER REFERENCE ONLY.				APPROVALS	DATE	<h2 style="color: blue; margin: 0;">Amphenol Connex</h2>				
3	CONTACT PIN	BRASS	GOLD	1	DRAWN		M.ZHANG	05/03/11	<b>PART DESCRIPTION</b> MCX DIRECT SOLDER PLUG (FOR .085", .086" CABLE)	
2	INSULATOR	PTFE	NATURAL	1	CHECKED					
1	BODY	BER. COPPER	GOLD	1	ISSUED					
	DESCRIPTION	MATERIAL	FINISH	QTY	SHEET		1 OF 1			
<small>UNLESS OTHERWISE SPECIFIED TOLERANCES FOR MILLIMETERS ARE:            0.5 - 8mm ± 0.20mm            8 - 30mm ± 0.40mm            30 - 120mm ± 0.50mm</small>				<small>UNLESS OTHERWISE SPECIFIED TOLERANCES FOR INCHES ARE:            .020 - .315 = ± 0.007"            .315 - 1.180 = ± 0.015"            1.180 - 4.724 = ± 0.020"</small>		<b>PART NO.</b> 252107-75				
DO NOT SCALE DRAWING				CAD FILE C:/CONNEX/252107-75.DWG		DWG. NO. 252107-75.DWG		REV. B	SIZE A	SCALE NA