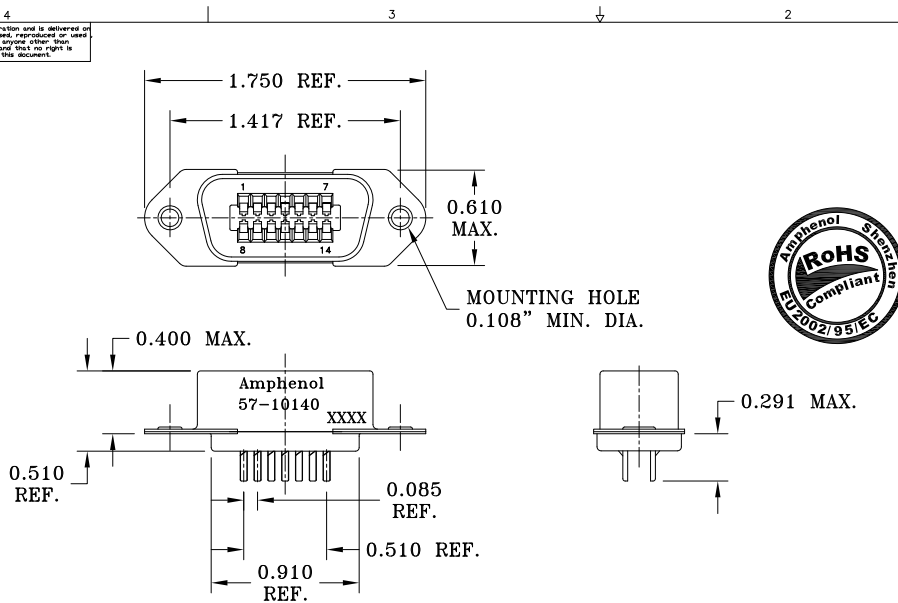


This document is the property of Amphenol Corporation and is delivered on the express condition that it is not to be disclosed, reproduced or used in whole or in part, for manufacture or sale by anyone other than Amphenol Corporation without the prior consent, and that no right is granted to disclose or to use any information in this document.



REVISIONS				
SYM	RCN	DESCRIPTION	DATE	APPROVED
A	HK	RELEASED TO CUSTOMER	11/21/02	Y.M.LEE
B	HK	ADD CHOP OF ROHS	5/19/06	IP
1	HK	Updated Shape of Shell	5/19/09	IP

TABLE 1

CONNECTOR SIZES	AVERAGE MATING FORCE (POUNDS)
14	5
24	8
36	12
50	15
64	19

SPECIFICATIONS:

- 1) SOLDER CUP CONTACT: TO ACCOMMODATE 22-30 AWG SOLID AND 24-30 STRANDED CONNECTOR WIRES.
- 2) DIELECTRIC: DIALYL-PHTHALATE PER MIL-M-14F TYPE MDG UL-94V0
- 3) CONTACT MATERIAL: COPPER ALLOY
- 4) CONTACT: 20 MICRO-INCHES MIN. GOLD MATING AREA: 3-5 MICRO-INCHES GOLD TERMINAL AREA: 50 MICRO-INCHES MIN. NICKEL UNDERPLATING ALL OVER.
- 5) SHELL MATERIAL: ZINC PLATED STEEL WITH CLEAR CHROMATE COATING
- 6) CURRENT CAPACITY: 5 AMPS/CONTACT
- 7) VOLTAGE RATING: 700 VOLTS D.C. AT SEA LEVEL
200 VOLTS D.C. AT 70,000 FEET
- 8) INSULATION RESISTANCE: >5000 M OHM
- 9) DIELECTRIC WITHSTANDING VOLTAGE: 1200 VAC (RMS) AT SEA LEVEL
- 10) CONNECTOR MATING FORCE: REFER TO TABLE 1.

- 11) CONTACT RETENTION FORCE: 2 LBS MAX.
- 12) DURABILITY: 250 CYCLES MIN.
- 13) VIBRATION: NO INTERRUPTIONS < 1u SEC.
- 14) OPERATING TEMPERATURE: -55°C TO +105°C (-67°F TO +221°F)

CUSTOMER INFORMATION DRAWING

ITEM NO	NOMENCLATURE OR DESCRIPTION	QTY REQ'D																																					
<table border="1"> <thead> <tr> <th colspan="2">UNLESS OTHERWISE SPECIFIED TOLERANCES</th> <th colspan="2">APPROVAL</th> <th>DATE</th> </tr> <tr> <th></th> <th>U.S.</th> <th>METRIC</th> <th>DRAWN</th> <th>XS.GUC</th> </tr> </thead> <tbody> <tr> <td>X</td> <td>+/-</td> <td>.015</td> <td>CHECKED</td> <td>5/28/09</td> </tr> <tr> <td>.XX</td> <td>+/-</td> <td>.010</td> <td>CHECKED</td> <td></td> </tr> <tr> <td>.XXX</td> <td>+/-</td> <td>.005</td> <td></td> <td></td> </tr> <tr> <td>FRACTIONS</td> <td>+/-</td> <td></td> <td></td> <td></td> </tr> <tr> <td>ANGLES</td> <td>+/-</td> <td>1°</td> <td></td> <td></td> </tr> </tbody> </table>			UNLESS OTHERWISE SPECIFIED TOLERANCES		APPROVAL		DATE		U.S.	METRIC	DRAWN	XS.GUC	X	+/-	.015	CHECKED	5/28/09	.XX	+/-	.010	CHECKED		.XXX	+/-	.005			FRACTIONS	+/-				ANGLES	+/-	1°				
UNLESS OTHERWISE SPECIFIED TOLERANCES		APPROVAL		DATE																																			
	U.S.	METRIC	DRAWN	XS.GUC																																			
X	+/-	.015	CHECKED	5/28/09																																			
.XX	+/-	.010	CHECKED																																				
.XXX	+/-	.005																																					
FRACTIONS	+/-																																						
ANGLES	+/-	1°																																					
<table border="1"> <thead> <tr> <th colspan="2">FOR MATERIALS AND FINISHES SEE NOTES</th> <th colspan="2">DRAWING FILE:</th> <th rowspan="2">TITLE</th> </tr> <tr> <th colspan="2">REMOVE SHARP EDGES</th> <th colspan="2">DRAWING: 097C5710140-1.DWG</th> </tr> </thead> <tbody> <tr> <td colspan="2">DIMENSIONS</td> <td colspan="2">ANGLE OF PROJECTION</td> <td rowspan="3"> Amphenol 14 SIZE PLUG ASSY, RACK & PANEL MINIATURE RIBBON </td> </tr> <tr> <td>U.S.</td> <td>INCHES</td> <td colspan="2"> </td> </tr> <tr> <td>(METRIC)</td> <td>(MM)</td> <td colspan="2"></td> </tr> <tr> <td>SIZE</td> <td>DRAWING NO.</td> <td>REV.</td> <td colspan="2"></td> </tr> <tr> <td>A3</td> <td>C57-10140</td> <td>1</td> <td colspan="2"></td> </tr> <tr> <td>SCALE</td> <td>NONE</td> <td colspan="3">SHEET 1 OF 1</td> </tr> </tbody> </table>			FOR MATERIALS AND FINISHES SEE NOTES		DRAWING FILE:		TITLE	REMOVE SHARP EDGES		DRAWING: 097C5710140-1.DWG		DIMENSIONS		ANGLE OF PROJECTION		Amphenol 14 SIZE PLUG ASSY, RACK & PANEL MINIATURE RIBBON	U.S.	INCHES			(METRIC)	(MM)			SIZE	DRAWING NO.	REV.			A3	C57-10140	1			SCALE	NONE	SHEET 1 OF 1		
FOR MATERIALS AND FINISHES SEE NOTES		DRAWING FILE:		TITLE																																			
REMOVE SHARP EDGES		DRAWING: 097C5710140-1.DWG																																					
DIMENSIONS		ANGLE OF PROJECTION		Amphenol 14 SIZE PLUG ASSY, RACK & PANEL MINIATURE RIBBON																																			
U.S.	INCHES																																						
(METRIC)	(MM)																																						
SIZE	DRAWING NO.	REV.																																					
A3	C57-10140	1																																					
SCALE	NONE	SHEET 1 OF 1																																					