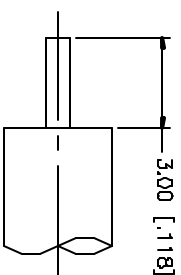
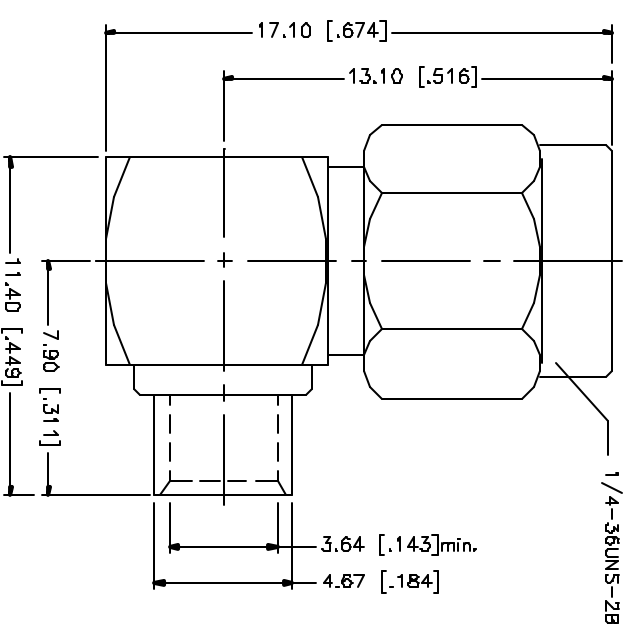
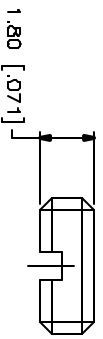


REV.	DATE	DESCRIPTION
NC	10/08/02	INITIAL RELEASE
A	05/01/04	UPDATE DRAWING FORMAT



RECOMMENDED
CABLE STRIPPING DIM'S



NOTE:
1) CONTACT PIN TO SOLDER

B										
8										
7										
6										
5										
4	COVER	BRASS	GOLD	1						
3	CONTACT PIN	BER, COPPER	GOLD	1						
2	INSULATOR	TEFLON	NATURAL	1						
1	HOUSING/BODY	BRASS	GOLD	1						
	DESCRIPTION	MATERIAL	FINISH	QTY						

UNLESS OTHERWISE SPECIFIED DIMENSIONS ARE IN MILLIMETERS, DIMENSIONS IN [] ARE IN INCHES AND THE OTHERWISE SPECIFIED UNIT APPLIES TO ALL DIMENSIONS.	
UNLESS OTHERWISE SPECIFIED DIMENSIONS ARE IN MILLIMETERS.	UNLESS OTHERWISE SPECIFIED DIMENSIONS ARE IN INCHES.
0.5 - .50mm ± 0.20mm	B - .50mm ± 0.20mm
1.0 - 1.20mm ± 0.50mm	3.0 - 3.0mm ± 0.50mm
1.5 - 1.5mm ± 0.50mm	4.0 - 4.0mm ± 0.50mm
2.0 - 2.0mm ± 0.50mm	5.0 - 5.0mm ± 0.50mm
3.0 - 3.0mm ± 0.50mm	6.0 - 6.0mm ± 0.50mm
4.0 - 4.0mm ± 0.50mm	7.0 - 7.0mm ± 0.50mm
5.0 - 5.0mm ± 0.50mm	8.0 - 8.0mm ± 0.50mm
6.0 - 6.0mm ± 0.50mm	9.0 - 9.0mm ± 0.50mm
7.0 - 7.0mm ± 0.50mm	10.0 - 10.0mm ± 0.50mm
8.0 - 8.0mm ± 0.50mm	11.0 - 11.0mm ± 0.50mm
9.0 - 9.0mm ± 0.50mm	12.0 - 12.0mm ± 0.50mm
10.0 - 10.0mm ± 0.50mm	13.0 - 13.0mm ± 0.50mm
11.0 - 11.0mm ± 0.50mm	14.0 - 14.0mm ± 0.50mm
12.0 - 12.0mm ± 0.50mm	15.0 - 15.0mm ± 0.50mm
13.0 - 13.0mm ± 0.50mm	16.0 - 16.0mm ± 0.50mm
14.0 - 14.0mm ± 0.50mm	17.0 - 17.0mm ± 0.50mm
15.0 - 15.0mm ± 0.50mm	18.0 - 18.0mm ± 0.50mm
16.0 - 16.0mm ± 0.50mm	19.0 - 19.0mm ± 0.50mm
17.0 - 17.0mm ± 0.50mm	20.0 - 20.0mm ± 0.50mm
18.0 - 18.0mm ± 0.50mm	21.0 - 21.0mm ± 0.50mm
19.0 - 19.0mm ± 0.50mm	22.0 - 22.0mm ± 0.50mm
20.0 - 20.0mm ± 0.50mm	23.0 - 23.0mm ± 0.50mm
21.0 - 21.0mm ± 0.50mm	24.0 - 24.0mm ± 0.50mm
22.0 - 22.0mm ± 0.50mm	25.0 - 25.0mm ± 0.50mm
23.0 - 23.0mm ± 0.50mm	26.0 - 26.0mm ± 0.50mm
24.0 - 24.0mm ± 0.50mm	27.0 - 27.0mm ± 0.50mm
25.0 - 25.0mm ± 0.50mm	28.0 - 28.0mm ± 0.50mm
26.0 - 26.0mm ± 0.50mm	29.0 - 29.0mm ± 0.50mm
27.0 - 27.0mm ± 0.50mm	30.0 - 30.0mm ± 0.50mm
28.0 - 28.0mm ± 0.50mm	31.0 - 31.0mm ± 0.50mm
29.0 - 29.0mm ± 0.50mm	32.0 - 32.0mm ± 0.50mm
30.0 - 30.0mm ± 0.50mm	33.0 - 33.0mm ± 0.50mm
31.0 - 31.0mm ± 0.50mm	34.0 - 34.0mm ± 0.50mm
32.0 - 32.0mm ± 0.50mm	35.0 - 35.0mm ± 0.50mm
33.0 - 33.0mm ± 0.50mm	36.0 - 36.0mm ± 0.50mm
34.0 - 34.0mm ± 0.50mm	37.0 - 37.0mm ± 0.50mm
35.0 - 35.0mm ± 0.50mm	38.0 - 38.0mm ± 0.50mm
36.0 - 36.0mm ± 0.50mm	39.0 - 39.0mm ± 0.50mm
37.0 - 37.0mm ± 0.50mm	40.0 - 40.0mm ± 0.50mm
38.0 - 38.0mm ± 0.50mm	41.0 - 41.0mm ± 0.50mm
39.0 - 39.0mm ± 0.50mm	42.0 - 42.0mm ± 0.50mm
40.0 - 40.0mm ± 0.50mm	43.0 - 43.0mm ± 0.50mm
41.0 - 41.0mm ± 0.50mm	44.0 - 44.0mm ± 0.50mm
42.0 - 42.0mm ± 0.50mm	45.0 - 45.0mm ± 0.50mm
43.0 - 43.0mm ± 0.50mm	46.0 - 46.0mm ± 0.50mm
44.0 - 44.0mm ± 0.50mm	47.0 - 47.0mm ± 0.50mm
45.0 - 45.0mm ± 0.50mm	48.0 - 48.0mm ± 0.50mm
46.0 - 46.0mm ± 0.50mm	49.0 - 49.0mm ± 0.50mm
47.0 - 47.0mm ± 0.50mm	50.0 - 50.0mm ± 0.50mm
48.0 - 48.0mm ± 0.50mm	51.0 - 51.0mm ± 0.50mm
49.0 - 49.0mm ± 0.50mm	52.0 - 52.0mm ± 0.50mm
50.0 - 50.0mm ± 0.50mm	53.0 - 53.0mm ± 0.50mm
51.0 - 51.0mm ± 0.50mm	54.0 - 54.0mm ± 0.50mm
52.0 - 52.0mm ± 0.50mm	55.0 - 55.0mm ± 0.50mm
53.0 - 53.0mm ± 0.50mm	56.0 - 56.0mm ± 0.50mm
54.0 - 54.0mm ± 0.50mm	57.0 - 57.0mm ± 0.50mm
55.0 - 55.0mm ± 0.50mm	58.0 - 58.0mm ± 0.50mm
56.0 - 56.0mm ± 0.50mm	59.0 - 59.0mm ± 0.50mm
57.0 - 57.0mm ± 0.50mm	60.0 - 60.0mm ± 0.50mm
58.0 - 58.0mm ± 0.50mm	61.0 - 61.0mm ± 0.50mm
59.0 - 59.0mm ± 0.50mm	62.0 - 62.0mm ± 0.50mm
60.0 - 60.0mm ± 0.50mm	63.0 - 63.0mm ± 0.50mm
61.0 - 61.0mm ± 0.50mm	64.0 - 64.0mm ± 0.50mm
62.0 - 62.0mm ± 0.50mm	65.0 - 65.0mm ± 0.50mm
63.0 - 63.0mm ± 0.50mm	66.0 - 66.0mm ± 0.50mm
64.0 - 64.0mm ± 0.50mm	67.0 - 67.0mm ± 0.50mm
65.0 - 65.0mm ± 0.50mm	68.0 - 68.0mm ± 0.50mm
66.0 - 66.0mm ± 0.50mm	69.0 - 69.0mm ± 0.50mm
67.0 - 67.0mm ± 0.50mm	70.0 - 70.0mm ± 0.50mm
68.0 - 68.0mm ± 0.50mm	71.0 - 71.0mm ± 0.50mm
69.0 - 69.0mm ± 0.50mm	72.0 - 72.0mm ± 0.50mm
70.0 - 70.0mm ± 0.50mm	73.0 - 73.0mm ± 0.50mm
71.0 - 71.0mm ± 0.50mm	74.0 - 74.0mm ± 0.50mm
72.0 - 72.0mm ± 0.50mm	75.0 - 75.0mm ± 0.50mm
73.0 - 73.0mm ± 0.50mm	76.0 - 76.0mm ± 0.50mm
74.0 - 74.0mm ± 0.50mm	77.0 - 77.0mm ± 0.50mm
75.0 - 75.0mm ± 0.50mm	78.0 - 78.0mm ± 0.50mm
76.0 - 76.0mm ± 0.50mm	79.0 - 79.0mm ± 0.50mm
77.0 - 77.0mm ± 0.50mm	80.0 - 80.0mm ± 0.50mm
78.0 - 78.0mm ± 0.50mm	81.0 - 81.0mm ± 0.50mm
79.0 - 79.0mm ± 0.50mm	82.0 - 82.0mm ± 0.50mm
80.0 - 80.0mm ± 0.50mm	83.0 - 83.0mm ± 0.50mm
81.0 - 81.0mm ± 0.50mm	84.0 - 84.0mm ± 0.50mm
82.0 - 82.0mm ± 0.50mm	85.0 - 85.0mm ± 0.50mm
83.0 - 83.0mm ± 0.50mm	86.0 - 86.0mm ± 0.50mm
84.0 - 84.0mm ± 0.50mm	87.0 - 87.0mm ± 0.50mm
85.0 - 85.0mm ± 0.50mm	88.0 - 88.0mm ± 0.50mm
86.0 - 86.0mm ± 0.50mm	89.0 - 89.0mm ± 0.50mm
87.0 - 87.0mm ± 0.50mm	90.0 - 90.0mm ± 0.50mm
88.0 - 88.0mm ± 0.50mm	91.0 - 91.0mm ± 0.50mm
89.0 - 89.0mm ± 0.50mm	92.0 - 92.0mm ± 0.50mm
90.0 - 90.0mm ± 0.50mm	93.0 - 93.0mm ± 0.50mm
91.0 - 91.0mm ± 0.50mm	94.0 - 94.0mm ± 0.50mm
92.0 - 92.0mm ± 0.50mm	95.0 - 95.0mm ± 0.50mm
93.0 - 93.0mm ± 0.50mm	96.0 - 96.0mm ± 0.50mm
94.0 - 94.0mm ± 0.50mm	97.0 - 97.0mm ± 0.50mm
95.0 - 95.0mm ± 0.50mm	98.0 - 98.0mm ± 0.50mm
96.0 - 96.0mm ± 0.50mm	99.0 - 99.0mm ± 0.50mm
97.0 - 97.0mm ± 0.50mm	100.0 - 100.0mm ± 0.50mm

APPROVALS	DATE
G.R.S.	05/01/04
CHECKED	
ISSUED	
SHEET	1 OF 1

CAD FILE	C:/132/132201.DWG
DWG. NO.	132201.DWG
REV.	A
SIZE	A
SCALE	NA

PART DESCRIPTION	
SMA R/A DIRECT SOLDER PLUG	
(FOR .141" SEMI-RIGID CABLE)	
PART NO.	132201

Amphenol Connex

SMA R/A DIRECT SOLDER PLUG
(FOR .141" SEMI-RIGID CABLE)

132201