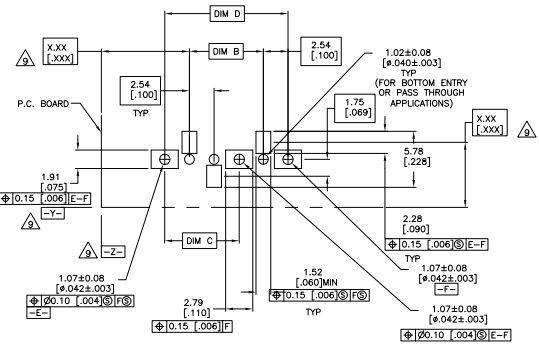
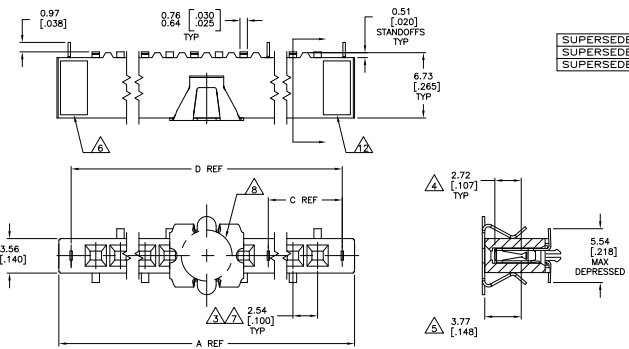


THIS DRAWING IS UNAPPROVED
 REVISIONS FOR INFORMATION
 © 2008 TI
 BY TIS ELECTRONICS CORPORATION ALL RIGHTS RESERVED

REV	DATE	DESCRIPTION	BY	CHKD
H2	E00-07-003804		REI	JG
H3	REVISED PER E00-09-020832		08SEP09	KK AEG



RECOMMENDED PC BOARD PAD PATTERN
 0.20[0.008] THICK STENCIL

- △ HOUSING: GLASS FILLED, FLAME RETARDANT POLYESTER, BLACK
- △ CONTACTS: PHOSPHOR BRONZE
- △ VACUUM COVER: STAINLESS STEEL
- △ CONTACTS: DUPLEX PLATED: 0.25μm [0.000010] GOLD IN CONTACT AREA
- △ 3.81-7.62mm [0.00150-0.000300] BRIGHT TIN-LEAD ON LEADS,
- △ 1.27mm [0.000050] MIN NICKEL UNDERPLATE ALL OVER.
- △ DIMENSION APPLIES TO HOUSING CAVITY CENTERLINES ONLY.
- △ POINT OF MEASUREMENT FOR PLATING THICKNESS.
- △ POINT OF CONTACT DIMENSION.
- △ TYCO PART NUMBER AND DATE CODE ARE MARKED IN APPROXIMATE LOCATION SHOWN.
- △ TOLERANCE IS NON-CUMULATIVE.
- △ 5.2 [205] MIN TARGET AREA FOR VACUUM PICK-UP COVERS TO BE REMOVED AFTER SOLDERING.
- △ DATUMS AND BASIC DIMENSIONS ESTABLISHED BY CUSTOMER.
- △ NO CENTER HOLD DOWNS
- △ FOR 2 POS, DATE CODE IS STAMPED OPPOSITE SIDE OF TYCO LOGO.
- △ TYCO LOGO AND CSA LOGO ARE MOLED INTO HOUSING.
- △ NO PART NUMBER MARKING REQUIRED ON THIS PART.
- △ CONTACTS: DUPLEX PLATED: 0.25μm [0.000010] GOLD IN CONTACT AREA
- △ 3.81-7.62mm [0.00150-0.000300] MATTE TIN ON LEADS,
- △ 1.27mm [0.000050] MIN NICKEL UNDERPLATE ALL OVER.
- △ ROHS 2002/95/EC COMPLIANT
- △ OBSOLETE PARTS: OBSOLETE CIS STREAMLINING PER D.RENAUD/D.SINISI

FINISH	EIA TAPE WIDTH	D	C	B	A	NO OF POS	PART NUMBER
24mm	7.62 [300]	53.34 [2100]	2.54 [100]	10.16 [400]	10.16 [400]	2	3-147730-9
N/A	106.68 [4200]	53.34 [2100]	104.14 [4100]	109.22 [4300]	40	3	3-147730-8
	104.14 [4100]	50.8 [2000]	101.6 [4000]	106.68 [4200]	39	3	3-147730-7
	101.6 [4000]	50.8 [2000]	99.06 [3900]	104.14 [4100]	38	3	3-147730-6
	99.06 [3900]	48.26 [1900]	96.52 [3800]	101.6 [4000]	37	3	3-147730-5
	96.52 [3800]	48.26 [1900]	93.98 [3700]	99.06 [3900]	36	3	3-147730-4
	93.98 [3700]	45.72 [1800]	91.44 [3600]	96.52 [3800]	35	3	3-147730-3
	88.9 [3500]	43.18 [1700]	88.9 [3500]	91.44 [3600]	34	3	3-147730-2
	86.36 [3400]	40.64 [1600]	86.36 [3400]	88.9 [3500]	33	3	3-147730-1
	83.82 [3300]	38.1 [1500]	83.82 [3300]	86.36 [3400]	32	3	3-147730-0
	81.28 [3200]	35.56 [1400]	81.28 [3200]	83.82 [3300]	31	3	3-147730-9
	78.74 [3100]	33.02 [1300]	78.74 [3100]	81.28 [3200]	30	3	3-147730-8
	76.2 [3000]	30.48 [1200]	76.2 [3000]	78.74 [3100]	29	3	3-147730-7
	73.66 [2900]	27.94 [1100]	73.66 [2900]	76.2 [3000]	28	3	3-147730-6
	71.12 [2800]	25.4 [1000]	71.12 [2800]	73.66 [2900]	27	3	3-147730-5
	68.58 [2700]	22.86 [900]	68.58 [2700]	71.12 [2800]	26	3	3-147730-4
	66.04 [2600]	20.32 [800]	66.04 [2600]	68.58 [2700]	25	3	3-147730-3
	63.5 [2500]	17.78 [700]	63.5 [2500]	66.04 [2600]	24	3	3-147730-2
	60.96 [2400]	15.24 [600]	60.96 [2400]	63.5 [2500]	23	3	3-147730-1
	58.42 [2300]	12.7 [500]	58.42 [2300]	60.96 [2400]	22	3	3-147730-0
	55.88 [2200]	10.16 [400]	55.88 [2200]	58.42 [2300]	21	3	3-147730-9
	53.34 [2100]	7.62 [300]	53.34 [2100]	55.88 [2200]	20	3	3-147730-8
	50.8 [2000]	5.08 [200]	50.8 [2000]	53.34 [2100]	19	3	3-147730-7
	48.26 [1900]	2.54 [100]	48.26 [1900]	50.8 [2000]	18	3	3-147730-6
	45.72 [1800]	0	45.72 [1800]	48.26 [1900]	17	3	3-147730-5
	43.18 [1700]	0	43.18 [1700]	45.72 [1800]	16	3	3-147730-4
	40.64 [1600]	0	40.64 [1600]	43.18 [1700]	15	3	3-147730-3
	38.1 [1500]	0	38.1 [1500]	40.64 [1600]	14	3	3-147730-2
	35.56 [1400]	0	35.56 [1400]	38.1 [1500]	13	3	3-147730-1
	33.02 [1300]	0	33.02 [1300]	35.56 [1400]	12	3	3-147730-0
	30.48 [1200]	0	30.48 [1200]	33.02 [1300]	11	3	3-147730-9
	27.94 [1100]	0	27.94 [1100]	30.48 [1200]	10	3	3-147730-8
	25.4 [1000]	0	25.4 [1000]	27.94 [1100]	9	3	3-147730-7
	22.86 [900]	0	22.86 [900]	25.4 [1000]	8	3	3-147730-6
	20.32 [800]	0	20.32 [800]	22.86 [900]	7	3	3-147730-5
	17.78 [700]	0	17.78 [700]	20.32 [800]	6	3	3-147730-4
	15.24 [600]	0	15.24 [600]	17.78 [700]	5	3	3-147730-3
	12.7 [500]	0	12.7 [500]	15.24 [600]	4	3	3-147730-2
	10.16 [400]	0	10.16 [400]	12.7 [500]	3	3	3-147730-1
	7.62 [300]	0	7.62 [300]	10.16 [400]	2	3	3-147730-0

THIS DRAWING IS A CONTROLLED DOCUMENT. SEE SECTION 1.0 FOR DETAILS.

DESIGNED BY: J. ALSON
 DRAWN BY: J. ALSON
 CHECKED BY: J. ALSON
 APPROVED BY: J. ALSON

REPT. ASSY., MOD IV, SINGLE ROW, 100 CL.
 SURFACE MOUNT, VERTICAL, DUAL ENTRY
 CLOSED ENTRY

DATE: 11-25-018
 REV: 1
 PART NUMBER: 1007793-147730

CUSTOMER DRAWING