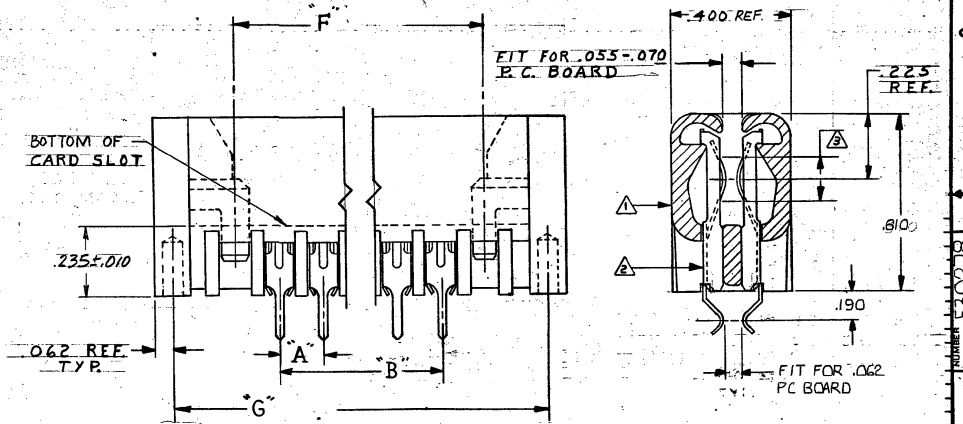


DRAWING MADE IN AMERICAN PROJECTION  
 © - 1974 BY AMP INCORPORATED. ALL RIGHTS RESERVED. AMP PRODUCTS COVERED BY PATENTS AND/OR PATENTS PENDING.

PART NO	NO. OF POS.	A	B	F	G
53027B	1	.150	4.500	4.800	5.234
-	2	.50	7.350	7.650	8.084
-	3	.150	4.350	4.650	5.084
-	4	.150	5.050	5.350	5.804
-	5	.150	4.650	4.950	5.384
-	6	.150	2.550	2.850	3.284
-	7	.150	5.400	5.700	6.134
53027A-8	8	.150	5.100	5.400	5.834

OBsolete

ZONE	LTR	DESCRIPTION	DATE	APPROVED
	0	RELEASED WAS 5193-269-22	9-5-74	MZ
	A	REVISED MATL 4657 DR	11-3-76	MS
	A1	ADDED -2 WAS 5193-269-74 4936 MS	10-7-76	
	A2	ADDED -3 WAS 5193-269-81 5995 MS	4-5-79	
	A3	ADDED -4 6061 MS	5-10-79	
	A4	ADDED -5-6 6861 MS	7-5-80	
	B	ADDED -7 PER ECN 8087 ZRT	12-82	
	B1	ADDED -8 85-14294-1	11-85	Boyle/Leath
	C	REV PER AD1523	2/4/87	CP
	D	REV PER AD 1633	6-25-87	CEW
	E	REV PER AD 1698	8-18-87	CEW
	F	REV PER AD 1868	3-18-88	CEW
	G	REV PER AD 2949	11-88	UBW/44K
	H	REV 0010-0252-23	5-8-93	RB
	J	REV PER EC 0320-209-97	7-2-97	NS



UNLESS OTHERWISE SPECIFIED, DIMENSIONS ARE IN INCHES TOLERANCES ON: DECIMALS ± ANGLES ±	CONTRACT NO.	AMP INCORPORATED HARRISBURG, PENNSYLVANIA
	MATERIAL	
SEE CALLOUT	DATE	HOUSING ASSEMBLY, TWIN LEAF, CARD EXTENDER, SOLDER TYPE POST END CAP VERSION
	OTHER APPD	
	DSGN APPD	CODE IDENT NO.
		NUMBER
		C
		00779
		530278
		SCALE
		SHEET 1 OF 2

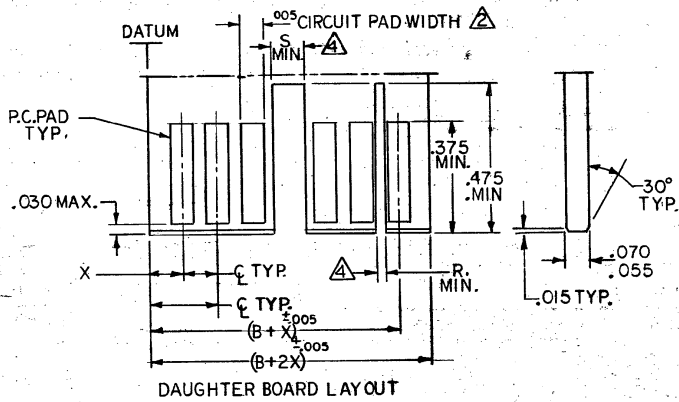
DRAWING MADE IN FILE PROJECTION

© COPYRIGHT 1974 AMP INCORPORATED, HARRISBURG, PA. ALL INTERNATIONAL RIGHTS RESERVED. AMP INCORPORATED PRODUCTS COVERED BY U. S. PATENT PATENTS AND/OR PATENTS PENDING.

Unpublished copy not to be reproduced nor published without written permission of AMP Incorporated.

LOC DIST FT 22

REVISIONS					
P	ZONE	LTR	DESCRIPTION	DATE	APPROVED
1			SEE SHT 1		



- 1- MAX. ALLOWABLE BOW OF DAUGHTER BOARD NOT EXCEED  $.010$  / IN.
- 2- EACH PAD LOCATION INCREASES BY  $\phi \pm .005$  WITH A NON-CUMULATIVE TOLERANCE OF  $\pm .005$ .
  - CIRCUIT PAD WIDTH:  $.045$  FOR  $.100 \phi$
  - CIRCUIT PAD WIDTH:  $.072$  FOR  $.125 \phi$
  - CIRCUIT PAD WIDTH:  $.072$  FOR  $.150 \phi$
  - CIRCUIT PAD WIDTH:  $.080$  FOR  $.156 \phi$
- 3- DIMENSIONS APPLY TO BOTH SIDES OF DAUGHTER BOARD.
- 3- "X" IS A CUSTOMER CONTROLLED DIMENSION EXCEPT FOR ENDCAP ASSEMBLIES WHERE  $X = \phi - .008$ .

4- THE SLOT FOR INTER-CONTACT KEYING PLUGS MUST BE CENTERED BETWEEN THE PRINTED CIRCUIT PADS, WHILE THE SLOT FOR ON-CONTACT KEYING PLUGS MUST BE CENTERED ON THE AREA OF A PRINTED CIRCUIT PAD.

INTER-CONTACT KEYING PLUG	"R" FOR CENTER LINE SPACING	ON-CONTACT KEYING PLUG	"S" FOR CENTER LINE SPACING
530030-1	.050 .125-.150-.156	583714-1	.129 .100-.125
530030-2	.040 .100	583714-2	.160 .150-.156

QTY REQD PER ASSY	CONTRACT NO	NOMENCLATURE OR DESCRIPTION		ITEM NO
UNLESS OTHERWISE SPECIFIED DIMENSIONS ARE IN INCHES.	DR <i>R. Weber</i> 9-5-74			HOUSING ASSEMBLY, TWIN LEAF CONNECTOR .150 CENTERS
TOLERANCES ON: DECIMALS $\pm$ ANGLES $\pm$	CHK <i>M. Bigler</i> 9-5-74			
MATERIAL	APPD <i>J. Kaufman</i> 9-5-74	SIZE	CODE IDENT NO	DRAWING NO
FINISH	APPD <i>R. Weber</i> 9-6-74	C	00779	530278
	DSGN APPD	SCALE	SHEET 2 OF 2 SHEETS	
	OTHER APPD	CUSTOMER DRAWING		