

- ALL MATERIALS AND FINISHES SHALL COMPLY WITH EU DIRECTIVE 2002/95/EC OF 27JAN2003 (ROHS).
- G CONTACT OPTION CAN BE USED FOR SIGNAL OR POWER LEVEL SWITCHING. IF SWITCH IS USED AT LEVELS EXCEEDING .4VA @ 20V AC/DC, SWITCH IS RENDERED FOR POWER SWITCHING ONLY DUE TO ARC REMOVAL OF GOLD PLATING. RATING STAMPED ON THE SWITCH IS 2A 250VAC, 5A 120VAC.
- TE CONNECTIVITY LOGO PER PER TEC-202-36.
- SP3T FUNCTION ACHIEVED WITH FUNCTIONS 11, 13, & 15 BY CUSTOMER APPLIED JUMPER BETWEEN TERMINALS 3 & 5.
- DATE CODE AND COUNTRY OF ORIGIN MAY APPEAR ON EITHER SIDE OF SWITCH.
- PANEL MOUNT BRACKET SUPPLIED WITH TERMINALS W, Z AND Z3 ONLY.

FUNCTION CHART			
FUNCTION			
01	ON	NONE	ON
03	ON	OFF	ON
05	(ON)	OFF	(ON)
07	ON	OFF	(ON)
08	ON	NONE	(ON)
TERMINALS CONNECTED	2-3, 5-6	---	1-2, 4-5
11	ON	ON	ON
13	ON	ON	(ON)
15	(ON)	ON	(ON)
TERMINALS CONNECTED	2-3, 5-6	2-3, 4-5	1-2, 4-5
SP3T SCHEMATIC (11, 13 & 15 ONLY) NOTE 5			
	IN 2, OUT 6	IN 2, OUT 4	IN 2, OUT 1

NONE: NO MECHANICAL POSITION
 OFF: MECHANICAL POSITION WITH NO ELECTRICAL CONNECTION
 (ON): MOMENTARY ACTION

SPECIFICATIONS	
RATING, B CONTACTS	.4VA MAX @20V MAX. AC OR DC
RATING, G CONTACTS—SEE NOTE 2	.4VA MAX @20V MAX. AC OR DC OR
	5A @120 VAC OR 28 VDC (RESISTIVE)
RATING, Q CONTACTS	2A @250 VAC (RESISTIVE)
	5A @120 VAC OR 28 VDC (RESISTIVE)
ELECTRICAL LIFE	2A @250 VAC (RESISTIVE)
	6,000 CYCLES AT RATED LOAD
CONTACT RESISTANCE	10 MILLIOHMS MAX INITIAL @ 2-4VDC, 100MA
INSULATION RESISTANCE	1,000 MEGOHMS MIN
DIELECTRIC WITHSTANDING VOLTAGE	1,000 V RMS AT SEA LEVEL
OPERATING TEMPERATURE	-30C TO 85C

PART NUMBER SEQUENCE							
MODEL	FUNCTION	ACTUATOR	TERMINAL	CONTACT	ACTUATOR COLOR	FRAME COLOR	ROHS
A2	01	J1	A	B	0 BLACK (STD)	0 BLACK (STD)	04
	03	J3	AV2	G	1 BROWN	1 BROWN	
	05	J50	C	Q	2 RED	2 RED	
	07	J51	V3		3 ORANGE	3 ORANGE	
	08	J52	V4		4 YELLOW	4 YELLOW	
	11	J2	V7		5 GREEN	5 GREEN	
	13	J4	W		6 BLUE	6 BLUE	
	15	J60	W4		8 GRAY	8 GRAY	
		J61	Z		9 WHITE	9 WHITE	
		J62	Z3				

THIS DRAWING IS A CONTROLLED DOCUMENT.

DIMENSIONS: mm [INCHES]	TOLERANCES UNLESS OTHERWISE SPECIFIED:	0 PLC ± .	1 PLC ± .	2 PLC ± .010	3 PLC ± .	4 PLC ± .	ANGLES ± °	FINISH
-------------------------	--	-----------	-----------	--------------	-----------	-----------	------------	--------

MATERIAL: - FINISH: -

DESIGNED BY: M. BINNER
 CHECKED BY: M. ZITTO
 APPROVED BY: M. ZITTO

APPLICATION SPEC: - WEIGHT: -

CUSTOMER DRAWING

TE Connectivity
 GEMINI A SERIES ROCKER SWITCH
 DOUBLE POLE

SIZE: A2 CASE CODE: 00779 DRAWING NO: 1571987 RESTRICTED TO: -
 SCALE: 2:1 SHEET: 1 of 5 REV: A6

4

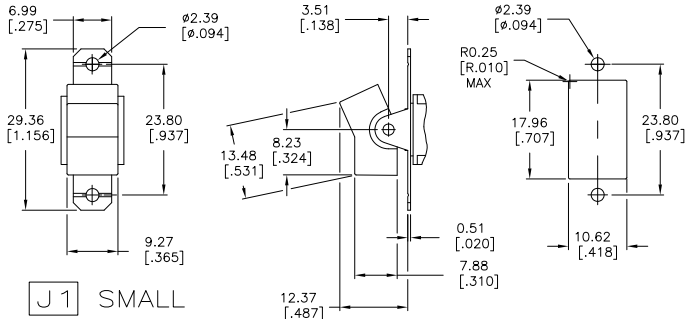
3

2

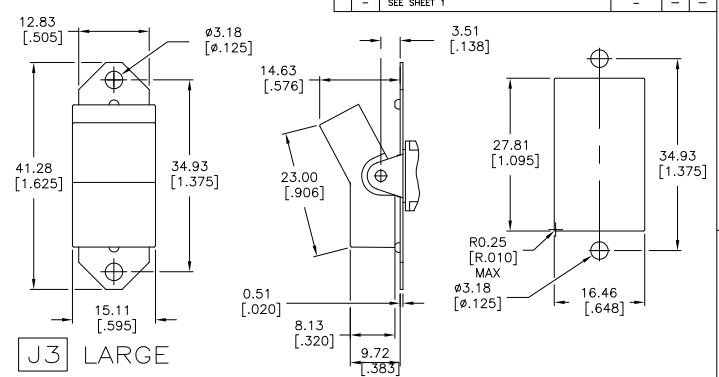
1

THIS DRAWING IS UNPUBLISHED. RELEASED FOR PUBLICATION. ALL RIGHTS RESERVED.

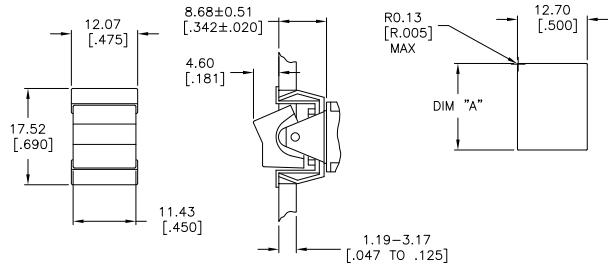
LOC	DIST	REVISIONS					
AD	00	F	LR	DESCRIPTION	DATE	BY	APPD
-	-	-	-	SEE SHEET 1	-	-	-



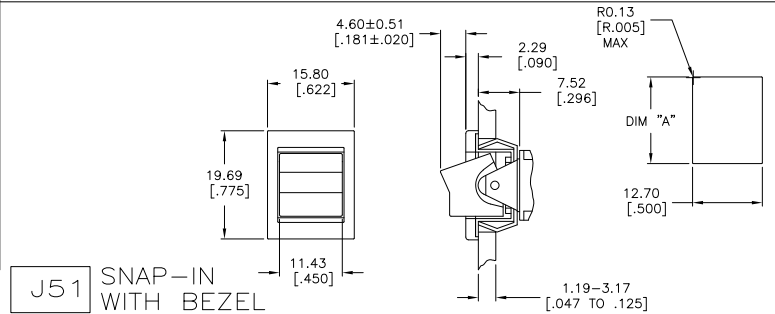
J1 SMALL



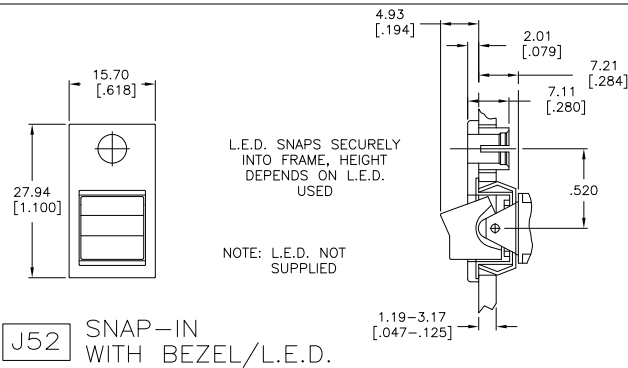
J3 LARGE



J50 SNAP-IN



J51 SNAP-IN WITH BEZEL



J52 SNAP-IN WITH BEZEL/L.E.D.

L.E.D. SNAPS SECURELY INTO FRAME, HEIGHT DEPENDS ON L.E.D. USED

NOTE: L.E.D. NOT SUPPLIED

1.52-3.17 [0.060-.125]	15.75-15.87 [0.620-.625]
1.19-1.50 [0.047-.059]	15.72 [0.619]
PANEL THICKNESS	
DIM "A"	

THIS DRAWING IS A CONTROLLED DOCUMENT.		DWG: M. BINNER CHK: M. ZITTO APPD: M. ZITTO PRODUCT SPEC:	TE Connectivity
DIMENSIONS: mm [INCHES] 0 PLG ± .010 1 PLG ± .010 2 PLG ± .010 3 PLG ± .010 4 PLG ± .010 ANGLES ± .5° FINISH:	TOLERANCES UNLESS OTHERWISE SPECIFIED: FRACTIONS DECIMALS .010 ± .005 .015 ± .005 .020 ± .005 .030 ± .005 .040 ± .005 .050 ± .005 .060 ± .005 .070 ± .005 .080 ± .005 .090 ± .005 .100 ± .005 .125 ± .005 .150 ± .005 .200 ± .005 .250 ± .005 .300 ± .005 .375 ± .005 .450 ± .005 .500 ± .005 .625 ± .005 .750 ± .005 .875 ± .005 1.000 ± .005 1.250 ± .005 1.500 ± .005 1.750 ± .005 2.000 ± .005 2.500 ± .005 3.000 ± .005 3.750 ± .005 4.500 ± .005 5.000 ± .005 6.000 ± .005 7.000 ± .005 8.000 ± .005 9.000 ± .005 10.000 ± .005 12.500 ± .005 15.000 ± .005 17.500 ± .005 20.000 ± .005 25.000 ± .005 30.000 ± .005 35.000 ± .005 40.000 ± .005 45.000 ± .005 50.000 ± .005 60.000 ± .005 70.000 ± .005 80.000 ± .005 90.000 ± .005 100.000 ± .005 125.000 ± .005 150.000 ± .005 175.000 ± .005 200.000 ± .005 250.000 ± .005 300.000 ± .005 350.000 ± .005 400.000 ± .005 450.000 ± .005 500.000 ± .005 600.000 ± .005 700.000 ± .005 800.000 ± .005 900.000 ± .005 1000.000 ± .005 1250.000 ± .005 1500.000 ± .005 1750.000 ± .005 2000.000 ± .005 2500.000 ± .005 3000.000 ± .005 3500.000 ± .005 4000.000 ± .005 4500.000 ± .005 5000.000 ± .005 6000.000 ± .005 7000.000 ± .005 8000.000 ± .005 9000.000 ± .005 10000.000 ± .005 12500.000 ± .005 15000.000 ± .005 17500.000 ± .005 20000.000 ± .005 25000.000 ± .005 30000.000 ± .005 35000.000 ± .005 40000.000 ± .005 45000.000 ± .005 50000.000 ± .005 60000.000 ± .005 70000.000 ± .005 80000.000 ± .005 90000.000 ± .005 100000.000 ± .005 125000.000 ± .005 150000.000 ± .005 175000.000 ± .005 200000.000 ± .005 250000.000 ± .005 300000.000 ± .005 350000.000 ± .005 400000.000 ± .005 450000.000 ± .005 500000.000 ± .005 600000.000 ± .005 700000.000 ± .005 800000.000 ± .005 900000.000 ± .005 1000000.000 ± .005 1250000.000 ± .005 1500000.000 ± .005 1750000.000 ± .005 2000000.000 ± .005 2500000.000 ± .005 3000000.000 ± .005 3500000.000 ± .005 4000000.000 ± .005 4500000.000 ± .005 5000000.000 ± .005 6000000.000 ± .005 7000000.000 ± .005 8000000.000 ± .005 9000000.000 ± .005 10000000.000 ± .005 12500000.000 ± .005 15000000.000 ± .005 17500000.000 ± .005 20000000.000 ± .005 25000000.000 ± .005 30000000.000 ± .005 35000000.000 ± .005 40000000.000 ± .005 45000000.000 ± .005 50000000.000 ± .005 60000000.000 ± .005 70000000.000 ± .005 80000000.000 ± .005 90000000.000 ± .005 100000000.000 ± .005 125000000.000 ± .005 150000000.000 ± .005 175000000.000 ± .005 200000000.000 ± .005 250000000.000 ± .005 300000000.000 ± .005 350000000.000 ± .005 400000000.000 ± .005 450000000.000 ± .005 500000000.000 ± .005 600000000.000 ± .005 700000000.000 ± .005 800000000.000 ± .005 900000000.000 ± .005 1000000000.000 ± .005 1250000000.000 ± .005 1500000000.000 ± .005 1750000000.000 ± .005 2000000000.000 ± .005 2500000000.000 ± .005 3000000000.000 ± .005 3500000000.000 ± .005 4000000000.000 ± .005 4500000000.000 ± .005 5000000000.000 ± .005 6000000000.000 ± .005 7000000000.000 ± .005 8000000000.000 ± .005 9000000000.000 ± .005 10000000000.000 ± .005 12500000000.000 ± .005 15000000000.000 ± .005 17500000000.000 ± .005 20000000000.000 ± .005 25000000000.000 ± .005 30000000000.000 ± .005 35000000000.000 ± .005 40000000000.000 ± .005 45000000000.000 ± .005 50000000000.000 ± .005 60000000000.000 ± .005 70000000000.000 ± .005 80000000000.000 ± .005 90000000000.000 ± .005 100000000000.000 ± .005 125000000000.000 ± .005 150000000000.000 ± .005 175000000000.000 ± .005 200000000000.000 ± .005 250000000000.000 ± .005 300000000000.000 ± .005 350000000000.000 ± .005 400000000000.000 ± .005 450000000000.000 ± .005 500000000000.000 ± .005 600000000000.000 ± .005 700000000000.000 ± .005 800000000000.000 ± .005 900000000000.000 ± .005 1000000000000.000 ± .005 1250000000000.000 ± .005 1500000000000.000 ± .005 1750000000000.000 ± .005 2000000000000.000 ± .005 2500000000000.000 ± .005 3000000000000.000 ± .005 3500000000000.000 ± .005 4000000000000.000 ± .005 4500000000000.000 ± .005 5000000000000.000 ± .005 6000000000000.000 ± .005 7000000000000.000 ± .005 8000000000000.000 ± .005 9000000000000.000 ± .005 10000000000000.000 ± .005 12500000000000.000 ± .005 15000000000000.000 ± .005 17500000000000.000 ± .005 20000000000000.000 ± .005 25000000000000.000 ± .005 30000000000000.000 ± .005 35000000000000.000 ± .005 40000000000000.000 ± .005 45000000000000.000 ± .005 50000000000000.000 ± .005 60000000000000.000 ± .005 70000000000000.000 ± .005 80000000000000.000 ± .005 90000000000000.000 ± .005 100000000000000.000 ± .005 125000000000000.000 ± .005 150000000000000.000 ± .005 175000000000000.000 ± .005 200000000000000.000 ± .005 250000000000000.000 ± .005 300000000000000.000 ± .005 350000000000000.000 ± .005 400000000000000.000 ± .005 450000000000000.000 ± .005 500000000000000.000 ± .005 600000000000000.000 ± .005 700000000000000.000 ± .005 800000000000000.000 ± .005 900000000000000.000 ± .005 1000000000000000.000 ± .005 1250000000000000.000 ± .005 1500000000000000.000 ± .005 1750000000000000.000 ± .005 2000000000000000.000 ± .005 2500000000000000.000 ± .005 3000000000000000.000 ± .005 3500000000000000.000 ± .005 4000000000000000.000 ± .005 4500000000000000.000 ± .005 5000000000000000.000 ± .005 6000000000000000.000 ± .005 7000000000000000.000 ± .005 8000000000000000.000 ± .005 9000000000000000.000 ± .005 10000000000000000.000 ± .005 12500000000000000.000 ± .005 15000000000000000.000 ± .005 17500000000000000.000 ± .005 20000000000000000.000 ± .005 25000000000000000.000 ± .005 30000000000000000.000 ± .005 35000000000000000.000 ± .005 40000000000000000.000 ± .005 45000000000000000.000 ± .005 50000000000000000.000 ± .005 60000000000000000.000 ± .005 70000000000000000.000 ± .005 80000000000000000.000 ± .005 90000000000000000.000 ± .005 100000000000000000.000 ± .005 125000000000000000.000 ± .005 150000000000000000.000 ± .005 175000000000000000.000 ± .005 200000000000000000.000 ± .005 250000000000000000.000 ± .005 300000000000000000.000 ± .005 350000000000000000.000 ± .005 400000000000000000.000 ± .005 450000000000000000.000 ± .005 500000000000000000.000 ± .005 600000000000000000.000 ± .005 700000000000000000.000 ± .005 800000000000000000.000 ± .005 900000000000000000.000 ± .005 1000000000000000000.000 ± .005 1250000000000000000.000 ± .005 1500000000000000000.000 ± .005 1750000000000000000.000 ± .005 2000000000000000000.000 ± .005 2500000000000000000.000 ± .005 3000000000000000000.000 ± .005 3500000000000000000.000 ± .005 4000000000000000000.000 ± .005 4500000000000000000.000 ± .005 5000000000000000000.000 ± .005 6000000000000000000.000 ± .005 7000000000000000000.000 ± .005 8000000000000000000.000 ± .005 9000000000000000000.000 ± .005 10000000000000000000.000 ± .005 12500000000000000000.000 ± .005 15000000000000000000.000 ± .005 17500000000000000000.000 ± .005 20000000000000000000.000 ± .005 25000000000000000000.000 ± .005 30000000000000000000.000 ± .005 35000000000000000000.000 ± .005 40000000000000000000.000 ± .005 45000000000000000000.000 ± .005 50000000000000000000.000 ± .005 60000000000000000000.000 ± .005 70000000000000000000.000 ± .005 80000000000000000000.000 ± .005 90000000000000000000.000 ± .005 100000000000000000000.000 ± .005 125000000000000000000.000 ± .005 150000000000000000000.000 ± .005 175000000000000000000.000 ± .005 200000000000000000000.000 ± .005 250000000000000000000.000 ± .005 300000000000000000000.000 ± .005 350000000000000000000.000 ± .005 400000000000000000000.000 ± .005 450000000000000000000.000 ± .005 500000000000000000000.000 ± .005 600000000000000000000.000 ± .005 700000000000000000000.000 ± .005 800000000000000000000.000 ± .005 900000000000000000000.000 ± .005 1000000000000000000000.000 ± .005 1250000000000000000000.000 ± .005 1500000000000000000000.000 ± .005 1750000000000000000000.000 ± .005 2000000000000000000000.000 ± .005 2500000000000000000000.000 ± .005 3000000000000000000000.000 ± .005 3500000000000000000000.000 ± .005 4000000000000000000000.000 ± .005 4500000000000000000000.000 ± .005 5000000000000000000000.000 ± .005 6000000000000000000000.000 ± .005 7000000000000000000000.000 ± .005 8000000000000000000000.000 ± .005 9000000000000000000000.000 ± .005 10000000000000000000000.000 ± .005 12500000000000000000000.000 ± .005 15000000000000000000000.000 ± .005 17500000000000000000000.000 ± .005 20000000000000000000000.000 ± .005 25000000000000000000000.000 ± .005 30000000000000000000000.000 ± .005 35000000000000000000000.000 ± .005 40000000000000000000000.000 ± .005 45000000000000000000000.000 ± .005 50000000000000000000000.000 ± .005 60000000000000000000000.000 ± .005 70000000000000000000000.000 ± .005 80000000000000000000000.000 ± .005 90000000000000000000000.000 ± .005 100000000000000000000000.000 ± .005 125000000000000000000000.000 ± .005 150000000000000000000000.000 ± .005 175000000000000000000000.000 ± .005 200000000000000000000000.000 ± .005 250000000000000000000000.000 ± .005 300000000000000000000000.000 ± .005 350000000000000000000000.000 ± .005 400000000000000000000000.000 ± .005 450000000000000000000000.000 ± .005 500000000000000000000000.000 ± .005 600000000000000000000000.000 ± .005 700000000000000000000000.000 ± .005 800000000000000000000000.000 ± .005 900000000000000000000000.000 ± .005 1000000000000000000000000.000 ± .005 1250000000000000000000000.000 ± .005 1500000000000000000000000.000 ± .005 1750000000000000000000000.000 ± .005 2000000000000000000000000.000 ± .005 2500000000000000000000000.000 ± .005 3000000000000000000000000.000 ± .005 3500000000000000000000000.000 ± .005		

4

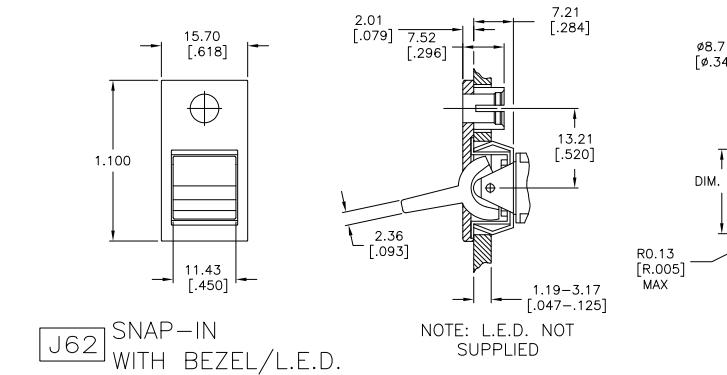
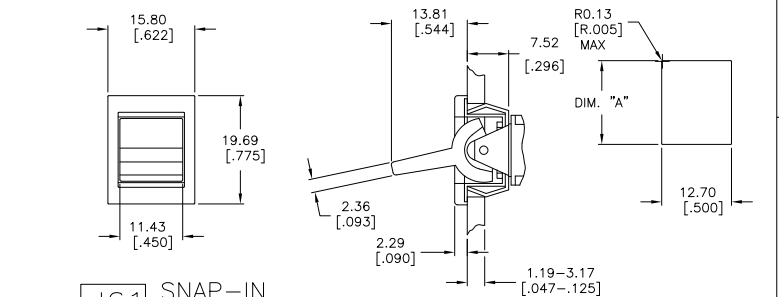
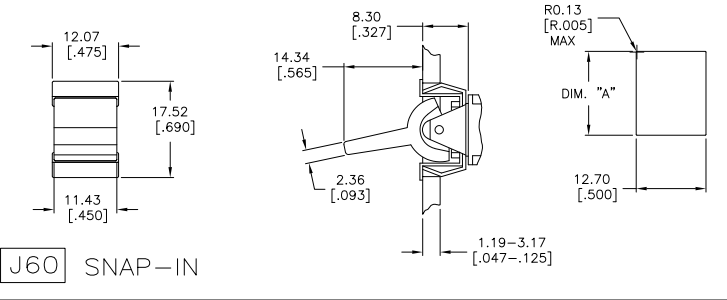
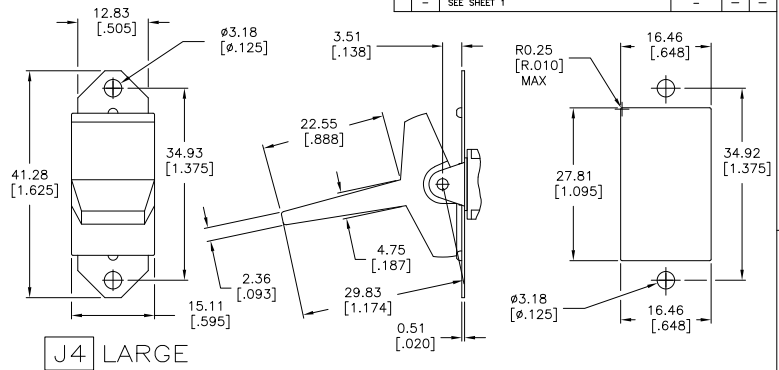
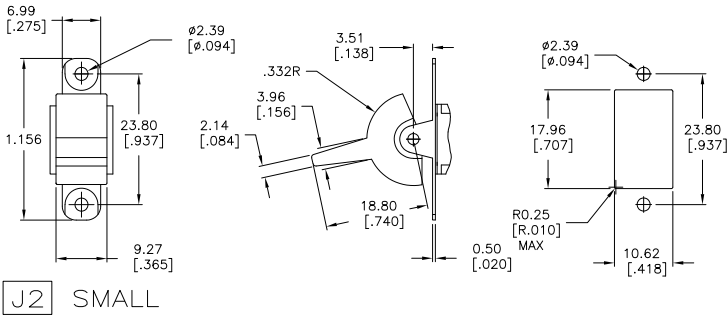
3

2

1

THIS DRAWING IS UNPUBLISHED. RELEASED FOR PUBLICATION.
 © COPYRIGHT - By - ALL RIGHTS RESERVED.

LOC	DIST	REVISIONS					
AD	00	F	LR	DESCRIPTION	DATE	BY	APPD
-	-	-	-	SEE SHEET 1	-	-	-



1.52-3.17 [.060-.125]	15.75-15.87 [.620-.625]
1.19-1.50 [.047-.059]	15.72 [.619]
PANEL THICKNESS	
DIM "A"	

THIS DRAWING IS A CONTROLLED DOCUMENT.

DIM: M. BINNER	DESIGNS	 TE Connectivity
CHK: M. ZITTO	DESIGNS	
APPD: M. ZITTO	DESIGNS	
PRODUCT SPEC:	NAME	
APPLICATION SPEC:	SIZE	GEMINI A SERIES ROCKER SWITCH DOUBLE POLE
MATERIAL:	WEIGHT:	SIZE: A2 CASE CODE: 00779 DRAWING NO: 1571987
FINISH:	CUSTOMER DRAWING	RESTRICTED TO: - SCALE: 2:1 SHEET: 3 of 5 REV: A6

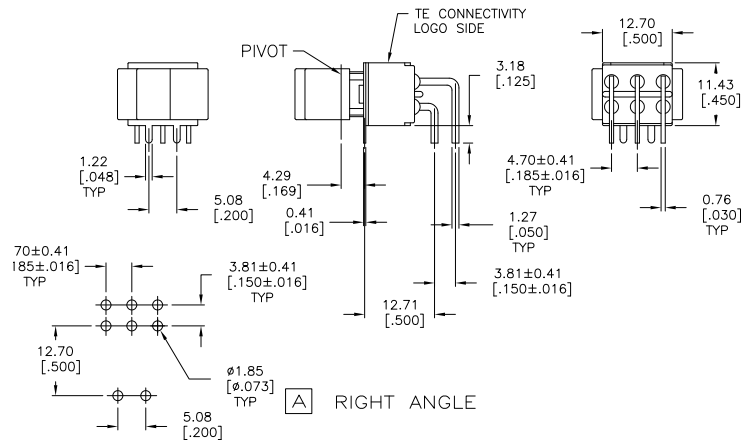
4

3

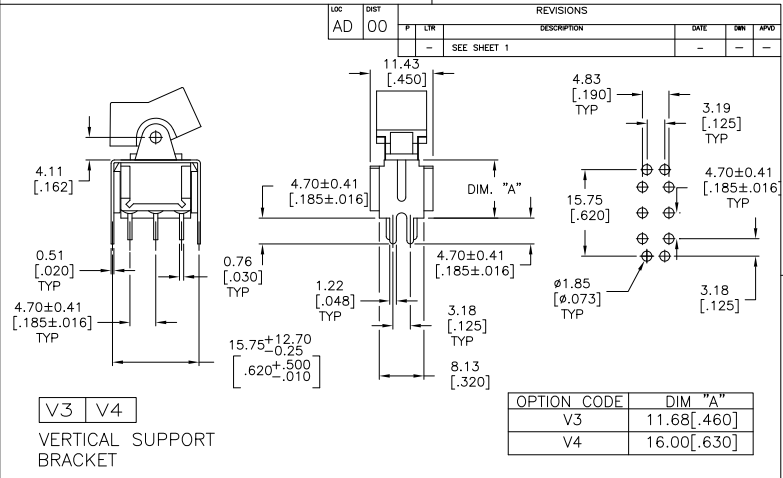
2

1

THIS DRAWING IS UNPUBLISHED. RELEASED FOR PUBLICATION. ALL RIGHTS RESERVED.



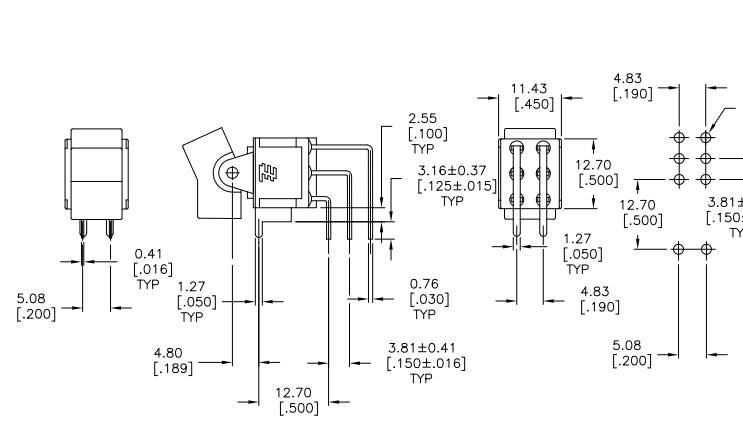
RIGHT ANGLE



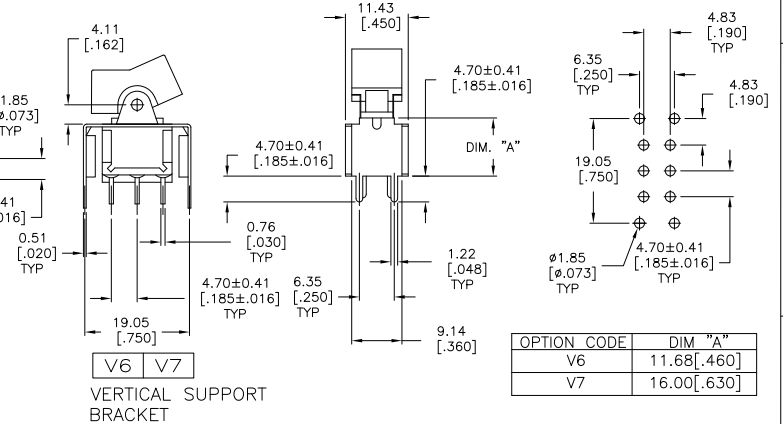
V3 V4
VERTICAL SUPPORT BRACKET

OPTION CODE	DIM "A"
V3	11.68 [.460]
V4	16.00 [.630]

LOC	DIST	REV	DESCRIPTION	DATE	BY	APPD
AD	00		SEE SHEET 1			



AV2 VERTICAL RIGHT ANGLE



V6 V7
VERTICAL SUPPORT BRACKET

OPTION CODE	DIM "A"
V6	11.68 [.460]
V7	16.00 [.630]

THIS DRAWING IS A CONTROLLED DOCUMENT.

DWG: M. BINNER	DESIGNS	 TE Connectivity
CHK: M. ZITTO	DESIGNS	
APP: M. ZITTO	DESIGNS	
PRODUCT SPEC:	DESIGNS	
APPLICATION SPEC:		GEMINI A SERIES ROCKER SWITCH DOUBLE POLE
MATERIAL:	FRESH	SIZE: A2 CASE CODE: 00779 DRAWING NO: 1571987
CUSTOMER DRAWING		RESTRICTED TO: - SCALE: 2:1 SHEET: 4 of 5 REV: A6

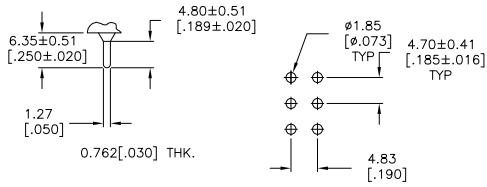
4

3

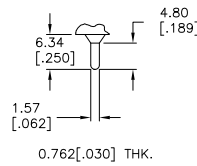
2

1

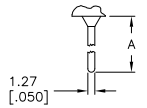
THIS DRAWING IS UNPUBLISHED. RELEASED FOR PUBLICATION. ALL RIGHTS RESERVED.



C PRINTED CIRCUIT

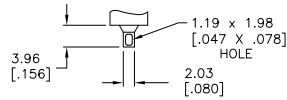


Z3 QUICK CONNECT



W W4 WIRE WRAP

OPTION	DIM A
W	18.69[.736]
W4	26.97[1.062]



Z WIRE LUG

MATERIALS CHART

COMPONENT NAME	BASE MATERIAL	FINISH
CASE	DAP, RED, UL94 V-0	
FRAME	STAINLESS STEEL	
B TERMINALS & CONTACTS	COPPER	GOLD OVER NICKEL
G TERMINALS & CONTACTS	COPPER	GOLD OVER SILVER
Q TERMINALS & CONTACTS	COPPER	SILVER
ACTUATOR	PHENOLIC, BLACK, UL94 V-1	
ROCKER CAP	NYLON, BLACK, UL94 V-1	
BUSHING & ACTUATOR LEVER	ZINC ALLOY	NICKEL
SPRING	MUSIC WIRE	
SUPPORT BRACKET	BRASS	TIN
PIVOT PIN	STEEL	NICKEL
TERMINAL SEAL	EPOXY, UL94 V-1	

LOC	DIST	REVISIONS				
AD	00	F	LR	DATE	BYN	APD
-	-	-	-	SEE SHEET 1	-	-

A213J61ZQ0004	4-1571987-4
A211J51ZQ0004	4-1571987-3
A208J61ZQ0004	4-1571987-2
A208J51ZQ0004	4-1571987-1
A208J1V3Q004	4-1571987-0
NOT ASSIGNED	3-1571987-9
A207J61ZQ0004	3-1571987-8
A207J51ZQ0004	3-1571987-7
A207J3ZQ004	3-1571987-6
A207J1ZQ004	3-1571987-5
A205J61ZQ0004	3-1571987-4
A205J51ZQ0004	3-1571987-3
A205J2ZQ004	3-1571987-2
A205JZC0004	3-1571987-1
A205J1ZQ004	3-1571987-0
A205J1AV2Q004	2-1571987-9
NOT ASSIGNED	2-1571987-8
A203J61ZQ0004	2-1571987-7
A203J51ZQ0004	2-1571987-6
NOT ASSIGNED	2-1571987-5
A203J1ZQ004	2-1571987-4
NOT ASSIGNED	2-1571987-3
A203J1CQ204	2-1571987-2
A203J1AV2Q004	2-1571987-1
A203J1AQ004	2-1571987-0
A201J61ZQ0004	1-1571987-9
A201J61Z3Q0004	1-1571987-8
A201J51ZQ9904	1-1571987-7
NOT ASSIGNED	1-1571987-6
A201J51ZQ0004	1-1571987-5
A201J50Z0004	1-1571987-4
A201J50AV2Q004	1-1571987-3
A201J50AV2Q004	1-1571987-2
A201J3ZQ004	1-1571987-1
A201J3ZB004	1-1571987-0
A201J2ZQ004	1571987-9
A201J2CQ004	1571987-8
A201J1ZQ004	1571987-7
A201J1V3Q004	1571987-6
A201J1CQ004	1571987-5
A201J1AV2Q004	1571987-4
A201J1AQ204	1571987-3
A201J1AQ004	1571987-2
A211J61Z3Q0004	1571987-1
ALCO P/N	P/N

THIS DRAWING IS A CONTROLLED DOCUMENT.

DIM	M. BINNER	DESIGNS
CHK	M. ZITTO	DESIGNS
APPD	M. ZITTO	DESIGNS
PRODUCT SPEC		
APPLICATION SPEC		
WEIGHT		
MATERIAL		
FINISH		

TE Connectivity
GEMINI A SERIES ROCKER SWITCH
DOUBLE POLE

SIZE: CASE CODE: DRAWING NO: A200779 ©=1571987
CUSTOMER DRAWING SCALE: 2:1 SHEET 5 of 5 REV: A6