

# Agilent

## PXIT 10.3125 Gb/s Pattern Generator N2102B and PXIT Synthesizer N2099A

### Data Sheet



The N2102B PXIT pattern generator is a 2-slot PXI module capable of generating a number of industry standard patterns, with very low jitter, from 622 Mb/s to 10.3125 Gb/s. The N2102B requires an external clock source for operation at these rates.

The N2099A PXIT synthesizer is a 2-slot PXI module with dual RF outputs, tunable over a 2 GHz range. There are three options available that cover different frequency ranges depending on the required application.

The N2099A is the ideal clock source for the N2102B.

Both instruments form part of the Agilent PXIT family of modules. Other modules available include the N2100B PXIT DCA and the N2101B PXIT BERT which can also be used (via its at rate clock out) to drive the N2102B PXIT pattern generator.



**Agilent Technologies**

# PXIT 10.3125 Gb/s Pattern Generator

N2102B

## Features

- $n - 1$ , ( $n = 7, 9, 11, 15, 23, 31$ )
- AT
- 
- 
- 
- 
- 
- 
- 
- 
- 
- 

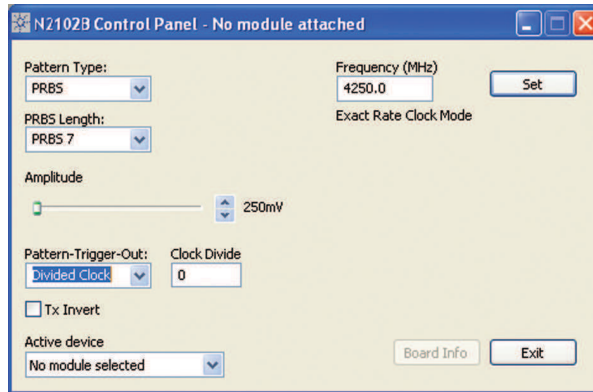


Parameter	Specification
Bit rate operation	622 Mb/s to 10.3125 Gb/s
	$n$ 22 ps characteristic
Output intrinsic jitter	2.5 ps RMS (max) 1.5 RMS ps characteristic
Output voltage range (single-ended)	250 mV to 1 V pp
Output voltage resolution	5 mV
Pattern trigger/clock output voltage	1 V pp (characteristic)
Front panel connectors	SMA
Clock input voltage range	500 mV to 1 V pp (characteristic)

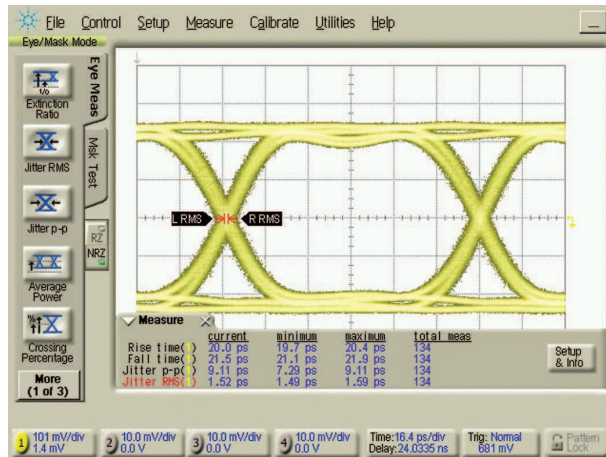
Note: Unless otherwise stated all signals are AC coupled and 50 Ω terminations are expected



User friendly configuration screen



The N2102B eye output at 10.3125 Gb/s viewed on the DCA-J



# PXIT Synthesizer

## N2099A

The N2099A synthesizer is a 2-slot PXI instrument. This permanent magnet YIG (PMYTO) based synthesizer can be tuned over a 2 GHz frequency range.

ActiveX drivers provide an easy to use software interface and a graphical user interface is provided for manual operation of the module.

### Features

- Tuning range
- Output power
- Frequency resolution
- Frequency stability
- Frequency accuracy
- Non-volatile storage of set frequency – unit powers up at previously set frequency
- Frequency range



Parameter	Specification
Output frequency (center)	5.25 and 10.5 GHz
Tuning range	±1.0 GHz
Output power	+6 dBm (9, 10 and 11 GHz) characteristic
Power variation over temp/freq	±3 dB
Step size minimum	1 kHz
Switching speed, 100 MHz step	100 ms typical
Output impedance	50 Ω
External reference osc output freq (TCXO)	10 MHz

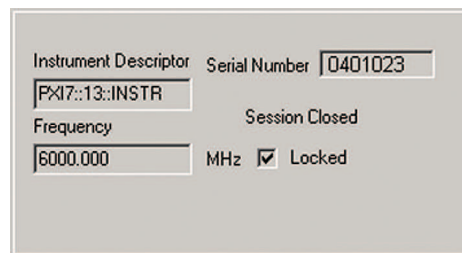
### Software

Both instruments and accompanying software fully comply with PXI application software which the user can control either without any user development.

To ease program development and compatibility, an ActiveX control is supplied allowing program development in any ActiveX compliant programming environment. These include Visual C++, Visual Basic, C#, Excel and many other environments.



- Visual C++
- Visual Basic
- C#

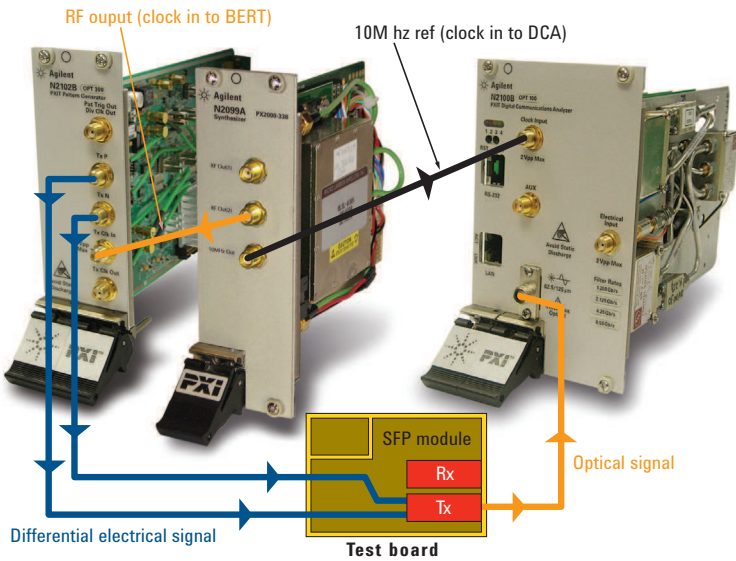




[www.agilent.com](http://www.agilent.com)  
[www.agilent.com/find/pxit](http://www.agilent.com/find/pxit)

For more information on Agilent Technologies' products, applications or services, please contact your local Agilent office. The

[www.agilent.com/find/contactus](http://www.agilent.com/find/contactus)



## Ordering

N2099A PXIT synthesizer	Option 052 4.25 GHz to 6.25 GHz Option 105 9.5 GHz to 11.5 GHz
N2102B PXIT pattern generator	Option 300 622 Mb/s to 10.3125 Gb/s



### Agilent Email Updates

[www.agilent.com/find/emailupdates](http://www.agilent.com/find/emailupdates)  
 Get the latest information on the products and applications you select.



### [www.lxistandard.org](http://www.lxistandard.org)

LXI is the LAN-based successor to GPIB, providing faster, more efficient connectivity. Agilent is a founding member of the LXI consortium.

Microsoft, EXCEL, and other registered trademarks of Microsoft Corporation.



National Instruments Corporation.



Agilent Advantage Services is committed to your success throughout measurement and service expertise to help you create the products that change our world. To keep you competitive, we continually invest in tools and processes that speed up calibration and repair, reduce your cost of ownership, and move us ahead of your development curve.

[www.agilent.com/find/advantageservices](http://www.agilent.com/find/advantageservices)



[www.agilent.com/quality](http://www.agilent.com/quality)

## Americas

Brazil	(11) 4197 3500
--------	----------------

## Asia Pacific

Japan	0120 (421) 345
-------	----------------

## Europe & Middle East

Austria	43 (0) 1 360 277 1571
Belgium	32 (0) 2 404 93 40
Denmark	45 70 13 15 15
France	358 (0) 10 855 2100
Germany	49 (0) 7031 464 6333
Italy	972-3-9288-504/544
Netherlands	31 (0) 20 547 2111
Spain	34 (91) 631 3300
Switzerland	0800 80 53 53

Product specifications and descriptions in this document subject to change without notice.

© Agilent Technologies, Inc. 2010



**Agilent Technologies**