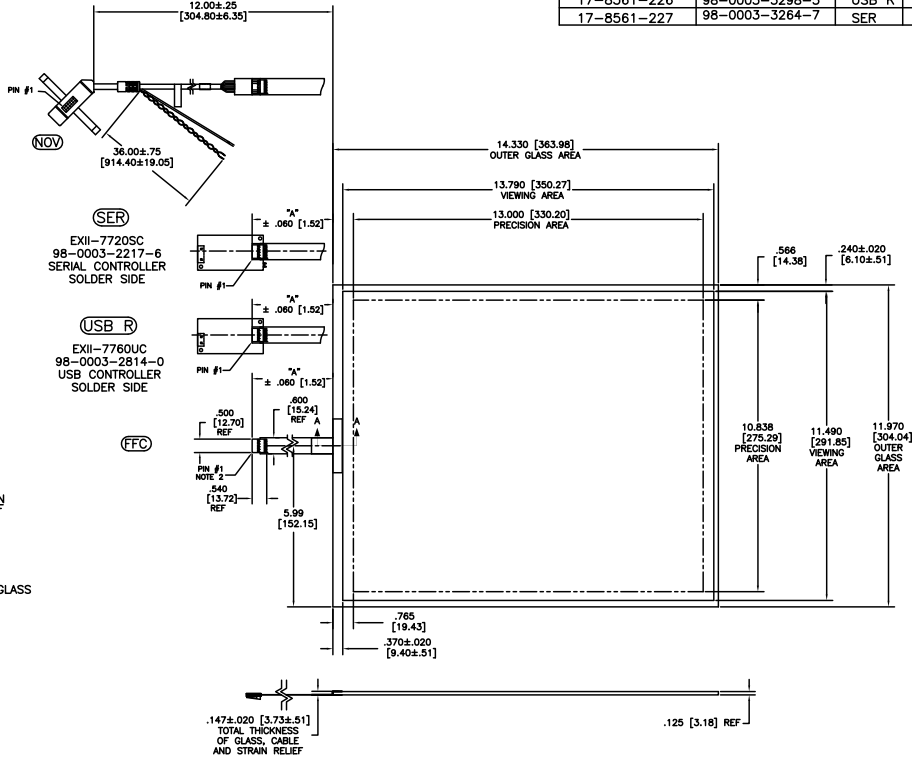
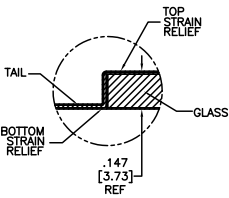


OGA DIAGONAL: 18.67 [474.26]  
 VA DIAGONAL: 17.95 [455.92]  
 PA DIAGONAL: 16.93 [429.90]

TOP LEVEL NUMBER	SKU 98 NUMBER	TYPE	DIM "A" (TOTAL GLASS TO CONNECTOR)	A/G FINISH	PROD SPEC
17-8561-203	98-0003-2625-0	FFC	4.27" [108.46]	AG500	23655
17-8561-221	98-0003-2628-4	SER	4.27" [108.46]	AG500	23655
17-8561-206	98-0003-2626-8	NOV	SEE DWG	AG500	23655
17-8561-205	98-0003-3263-9	FFC	8.00" [203.20]	AG500	23655
17-8561-226	98-0003-3298-5	USB R	8.00" [203.20]	AG500	23655
17-8561-227	98-0003-3264-7	SER	8.00" [203.20]	AG500	23655



ESD CLAMSHELL CASE IS USED WITH ALL NOV, USB AND SER TERMINATIONS.



SECTION A-A SCALE: NONE

- NOTES:
- WEIGHT OF GLASS IN GRAMS: 843 ± 10%
  - 5 PIN AMP CONNECTOR
  - LATCH STYLE HOUSING P/N: 487526-4
  - TIN CONTACTS P/N: 2-487406-4
  - HOUSING ORIENTED WITH LATCH DOWN

PINOUT	
1	LR
2	LL
3	SHLD
4	UL
5	UR

UNITS: INCHES [MM]

TOLERANCES UNLESS OTHERWISE SPECIFIED:

.X	±	
.XX	±	.03 [.76]
.XXX	±	.015 [.38]
ANGLES	±	1°

THIRD ANGLE PROJECTION

DO NOT SCALE DRAWING

SCALE: 1 = 1

3M 3M TOUCH SYSTEMS  
 METHUEN, MA  
 USA

THIS DOCUMENT IS COPYRIGHTED PROPERTY OF THE 3M COMPANY AND MAY NOT BE REPRODUCED WITHOUT 3M WRITTEN PERMISSION OR USED OR DISCLOSED FOR OTHER THAN 3M AUTHORIZED PURPOSES.

DRAWN: K.CROWLEY 9/05

REV	CHANGE NOTICE	DATE	BY
05	REVISED PER CO 030452	5/09	SB
04	REVISED PER CO 030107	3/09	MTD
03	REVISED PER CO 028977	5/08	ACM

TITLE: MARKETING DRAWING  
 SCT32NN 17.95"

DATE: 9/05

CHK: AUTOCAD

SHEET: 1 OF 1

DOC NO: 28390-MKT

REV: 05