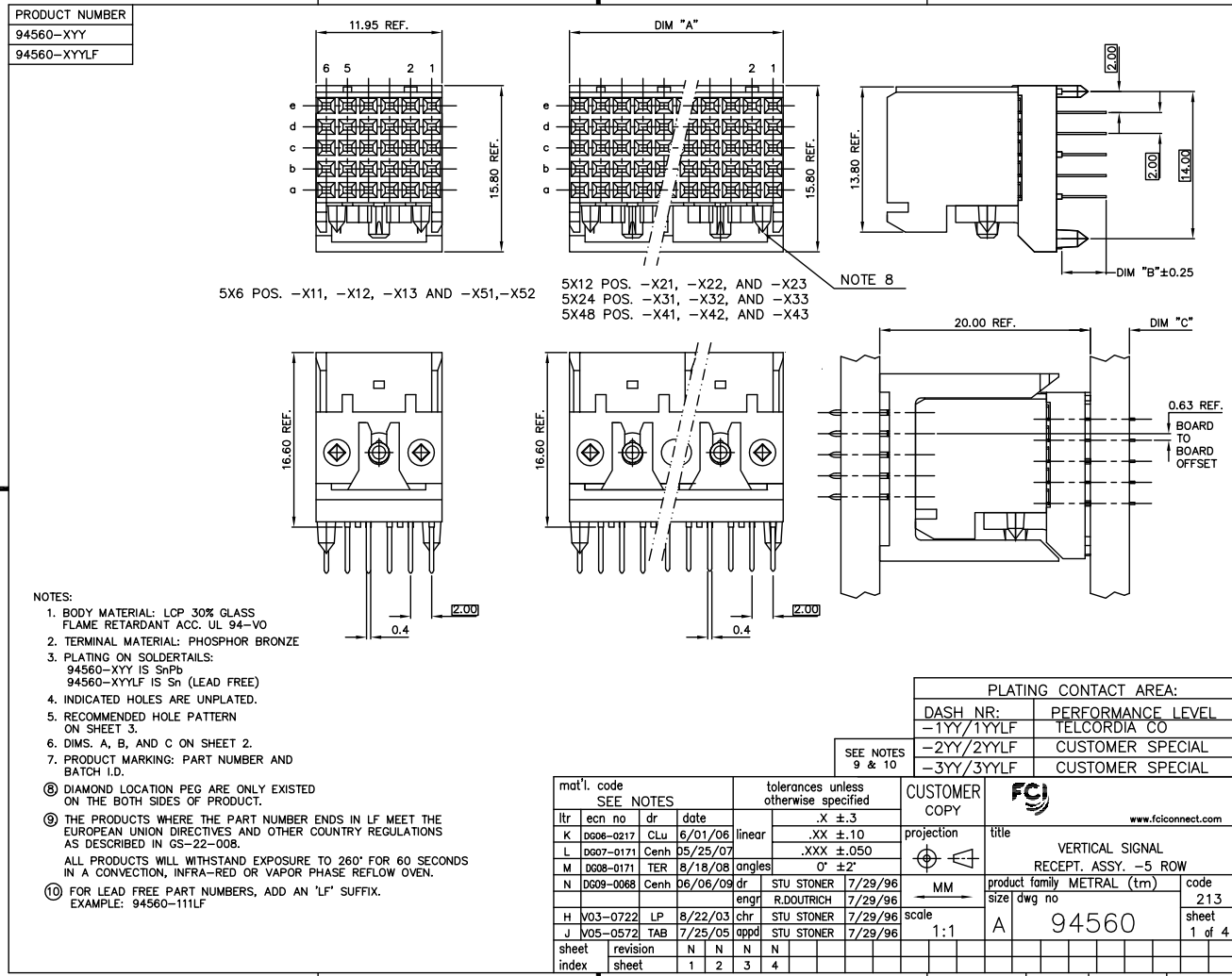


Tous droits strictement réservés. Reproduction ou communication à des tiers interdite sans autorisation écrite du propriétaire. Property of FCI. All rights reserved. FCI.



All rights strictly reserved. Reproduction or issue to third parties in any form whatsoever is not permitted without written authority from the proprietor. Property of FCI. Copyright FCI.



NOTES:

- BODY MATERIAL: LCP 30% GLASS FLAME RETARDANT ACC. UL 94-V0
- TERMINAL MATERIAL: PHOSPHOR BRONZE
- PLATING ON SOLDERTAILS:
94560-XYX IS SnPb
94560-XYLX IS Sn (LEAD FREE)
- INDICATED HOLES ARE UNPLATED.
- RECOMMENDED HOLE PATTERN ON SHEET 3.
- DIMS. A, B, AND C ON SHEET 2.
- PRODUCT MARKING: PART NUMBER AND BATCH I.D.
- DIAMOND LOCATION PEG ARE ONLY EXISTED ON THE BOTH SIDES OF PRODUCT.
- THE PRODUCTS WHERE THE PART NUMBER ENDS IN LF MEET THE EUROPEAN UNION DIRECTIVES AND OTHER COUNTRY REGULATIONS AS DESCRIBED IN GS-22-008.
ALL PRODUCTS WILL WITHSTAND EXPOSURE TO 260° FOR 60 SECONDS IN A CONVECTION, INFRA-RED OR VAPOR PHASE REFLOW OVEN.
- FOR LEAD FREE PART NUMBERS, ADD AN 'LF' SUFFIX.
EXAMPLE: 94560-111LF

PLATING CONTACT AREA:	
DASH NR:	PERFORMANCE LEVEL
-1YY/1YYLF	TELCORDIA CO
-2YY/2YYLF	CUSTOMER SPECIAL
-3YY/3YYLF	CUSTOMER SPECIAL

SEE NOTES 9 & 10

mat'l. code		SEE NOTES		tolerances unless otherwise specified		CUSTOMER COPY		FCI	
ltr	ecn no	dr	date	linear	.X ±.3	projection	title	www.fciconnect.com	
K	0696-0217	CLu	6/01/06		.XX ±.10	MM	VERTICAL SIGNAL RECEPT. ASSY. -5 ROW		
L	0607-0171	Cenh	05/25/07	angles	.XXX ±.050			product family	METRAL (tm)
M	0608-0171	TER	8/18/08		0° ±2	size	94560		
N	0609-0068	Cenh	06/06/09	dr		scale	1:1		
H	V03-0722	LP	8/22/03	chr		sheet	213		
J	V05-0572	TAB	7/25/05	appd		index	1 of 4		
sheet index		revision	N	N	N				
		sheet	1	2	3				

cage code 22526 STATUS: Released

PDM: Rev:N

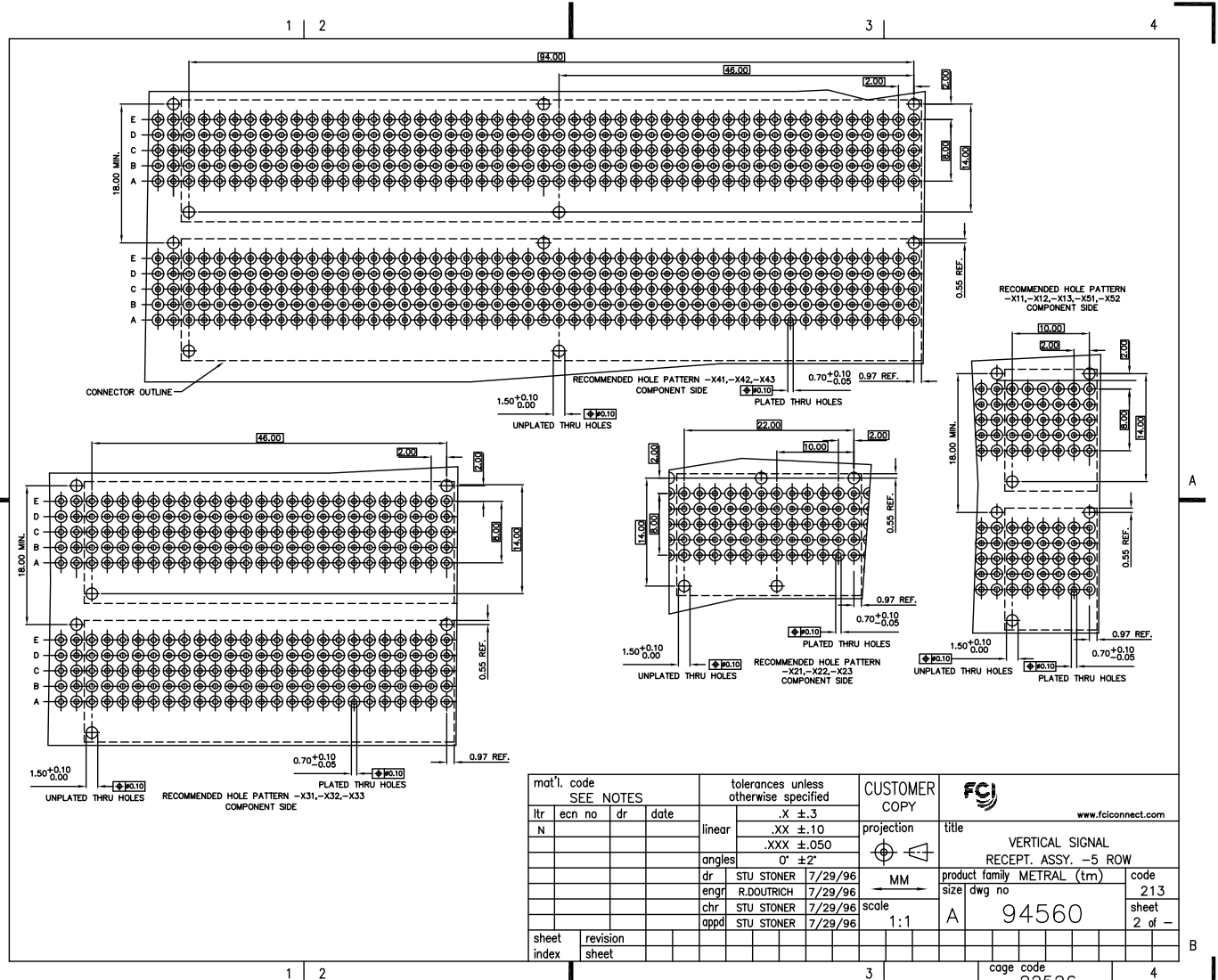
ACAD

Printed Sep 15, 2009

Tous droits strictement réservés. Reproduction ou communication à des tiers interdite sous quelque forme que ce soit sans autorisation écrite du propriétaire. Propriété de c FCI. Droits de reproduction FCI.



All rights strictly reserved. Reproduction or issue to third parties in any form whatever is not permitted without written authority from the proprietor. Property of FCI. Copyright FCI.



mat'l. code		tolerances unless otherwise specified		CUSTOMER COPY		FCI		www.fciconnect.com	
ltr	ecn no	dr	date	linear	.X ±.3	projection	title		
N					.XX ±.10		VERTICAL SIGNAL RECEPT. ASSY. -5 ROW		
				angles	.XXX ±.050			product family	METRAL (tm)
		dr	STU STONER	7/29/96	0° ±2°	MM	size	dwg no	213
		engr	R.DOUTRICH	7/29/96		1:1	A	94560	sheet
		chr	STU STONER	7/29/96					2 of -
		appd	STU STONER	7/29/96					
sheet index	revision sheet							cage code	
								22526	

Tous droits strictement reserves. Reproduction ou communication a des tiers
Interdite sous quelque forme que ce soit sans autorisation écrite du propriétaire.
Propriete de c FCI. Droits de reproduction FCI.



All rights strictly reserved. Reproduction or issue to third parties in any
form whatever is not permitted without written authority from the proprietor.
Property of FCI. Copyright FCI.

PRODUCT NUMBER *	DIM "A"	DIM "B"	DIM "C" PCB THK.
94560-X11	-----	2.65	1.6
94560-X21	23.95 REF.	2.65	1.6
94560-X31	47.95 REF.	2.65	1.6
94560-X41	95.95 REF.	2.65	1.6

PRODUCT NUMBER *	DIM "A"	DIM "B"	DIM "C" PCB THK.
94560-X12	-----	3.45	2.4
94560-X22	23.95 REF.	3.45	2.4
94560-X32	47.95 REF.	3.45	2.4
94560-X42	95.95 REF.	3.45	2.4

PRODUCT NUMBER *	DIM "A"	DIM "B"	DIM "C" PCB THK.
94560-X13	-----	4.25	3.2
94560-X23	23.95 REF.	4.25	3.2
94560-X33	47.95 REF.	4.25	3.2
94560-X43	95.95 REF.	4.25	3.2

* SEE NOTE 10

mat'l. code SEE NOTES				tolerances unless otherwise specified				CUSTOMER COPY		FCI www.fciconnect.com		
ltr	ecn no	dr	date	linear	.X ±.3		projection	title				
N					.XX ±.10				VERTICAL SIGNAL			
					.XXX ±.050				RECEPT. ASSY. -5 ROW			
				angles	0° ±2°			product family METRAL (tm)		code		
		dr	STU STONER	7/29/96	MM			size		dwg no	213	
		enrg	R.DOUTRICH	7/29/96	scale			A		94560	sheet	
		chr	STU STONER	7/29/96	1:1					3 of -		
		appd	STU STONER	7/29/96								
sheet index	revision sheet											

ACAT

PDM: Rev:N

STATUS: Released

Printed: Sep 16, 2009

Tous droits strictement réservés. Reproduction ou communication à des fins
 interdites sous quelque forme que ce soit sans autorisation écrite du propriétaire.
 Property of FCI. All rights reserved. Reproduction or communication without written authority from the proprietor.
 Property of FCI. Copyright FCI.



All rights strictly reserved. Reproduction or communication to third parties in any
 form whatsoever is not permitted without written authority from the proprietor.
 Property of FCI. Copyright FCI.

PRODUCT NUMBER *	DIM "A"	DIM "B"	DIM "C" PCB THK	CONFIGURATION						
				6	5	4	3	2	1	
94560-X51	----	4.25	3.2	E	-	X	-	-	-	-
				D	-	X	-	-	-	-
				C	-	-	-	-	-	-
				B	-	X	-	-	-	-
				A	-	X	X	-	-	-
94560-X52	----	2.65	1.6	E	-	X	-	X	-	X
				D	-	X	-	X	-	X
				C	-	X	-	X	-	X
				B	-	X	-	X	-	X
				A	-	X	-	X	-	X

* SEE NOTE 10

(-) REPRESENTS AN EMPTY POSITION
 (X) REPRESENTS A LOADED POSITION

mat'l. code SEE NOTES		tolerances unless otherwise specified		CUSTOMER COPY	www.fciconnect.com
ltr	ecn no	dr	date	linear	
N					
				angles	
		dr	STU STONER 7/29/96	MM	product family METRAL (tm)
		engr	R.DOUTRICH 7/29/96	scale	code
		chr	STU STONER 7/29/96	1:1	213
		appd	STU STONER 7/29/96		sheet
sheet index	revision sheet				4 of -

cage code 22526

ACAD

PDM: Rev:N

STATUS: Released

Printed: Sep 16, 2009