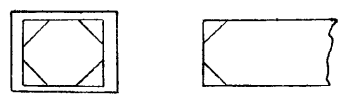
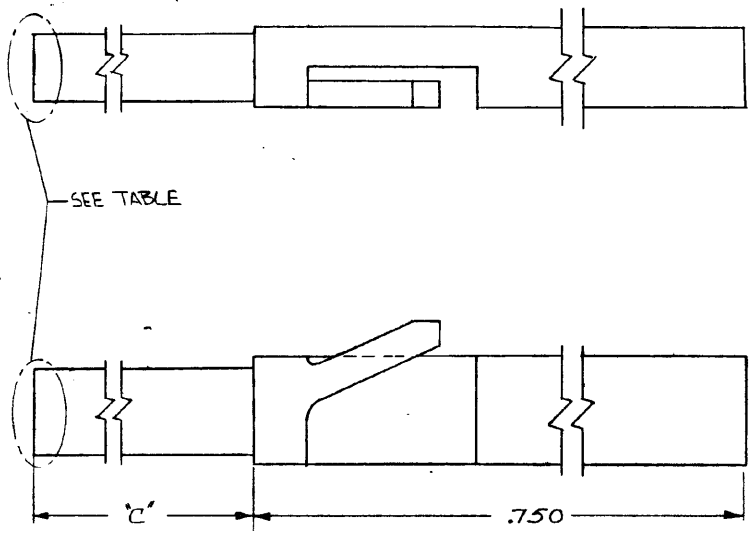


DRAWING MADE IN AMERICAN PROJECTION

© 1972 BY AMP INCORPORATED. ALL RIGHTS RESERVED. AMP PRODUCTS COVERED BY PATENTS AND/OR PATENTS PENDING.

REVISIONS				
ZONE	LTR	DESCRIPTION	DATE	APPROVED
		RELEASED W/2 5 21-10-72	5-21-72	SA
		ADDED 3" H. NOTE 1) PER ECN 432	7-11-72	SA
		ADDED TIP DETAIL PER ECN 432	11-8-72	SA
	A	REV LOC 4 DIST AD-4171	11-21-89	BF
	B	REV PER 0010-1103-43	3-15-99	EB



④ TIP DETAIL D

① 1. RECOMMENDED HOLE SIZE IN P.C. BOARD FOR PLUG "C" END  $.125^{+.004}$

OBSOLETE	SEE DETAIL D	.312	87116-3
	AS SHOWN	.050	87116-2
OBSOLETE	SEE DETAIL D	.650	87116-1
	REMARKS	"C" DIM.	PART UO

UNLESS OTHERWISE SPECIFIED DIMENSIONS ARE IN INCHES TOLERANCES ON: DECIMALS ± .01 ANGLES ± .5°	CONTRACT NO.	AMP INCORPORATED HARRISBURG, PENNSYLVANIA	
	DR. <i>Shubel 4-18-72</i>	AMP	
MATERIAL NYLON COLOR: NATURAL	CHK. <i>Shubel 6/19/72</i>	NAME KEYING PLUG, MODI.	
APPD. <i>Shubel 6/19/72</i>	REL. <i>Shubel 6/19/72</i>	SIZE B	CODE IDENT NO. NUMBER 00779 87116
DSGN APPD.	OTHER APPD.	SCALE	SHEET

AMP 1470-1 REV (3/68)

CUSTOMER DRAWING