

4

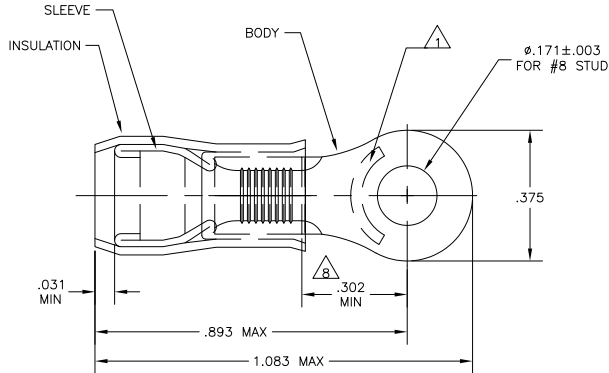
3

2

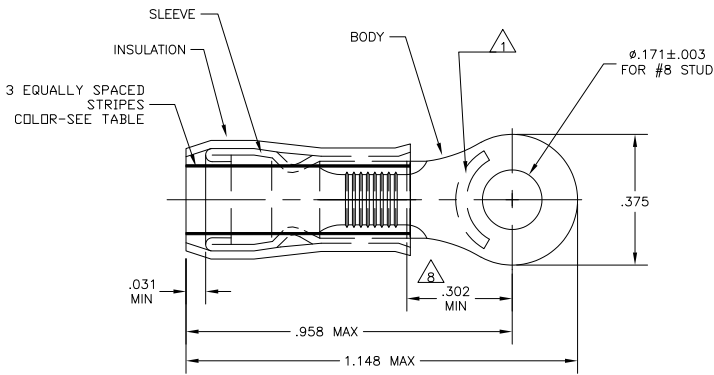
1

THIS DRAWING IS UNPUBLISHED. RELEASED FOR PUBLICATION. ALL RIGHTS RESERVED.

LOC	DIST	REV	DESCRIPTION	DATE	BY	APP'D
G	14	P	LTR			
		T7	REVISED PER ECO-12-002693	13FEB12	KH	DR



STYLE A



STYLE B  
INSULATION RESTRICTING

- 1 STAMP "AMP - SEE TABLE" APPROX AS SHOWN
- 2 WIRE INSULATION DIA: SEE TABLE
- 3 TONGUE MATERIAL THK: .040 ± .002
- 4 BODY: TIN PLATE .000100 MIN EXT THK PER ASTM B545
- 5 SLEEVE: TIN PLATE .000100 MIN EXT THK PER ASTM B545
- 6 SLEEVE: NICKEL PLATE PER QQ-N-290
- 7 BODY & SLEEVE - CU PER ASTM B152 INSULATION - NYLON PER ASTM D4066 COLOR - YELLOW
- 8 APPLIES FROM EDGE OF METAL WIRE BARREL TO CENTER OF STUD HOLE.
- 9 MEETS MS25036-156, CLASS 1 & 2
- 10 MEETS MS25036-156, CLASS 2
- 11 MEETS M7928/1-57, CLASS 1 & 2
- 12 MEETS M7928/1-64, CLASS 1 & 2
- 13 SUPERSEDED BY 2-320568-3

QTY	PACKAGE TYPE	STAMPING	WIRE DIA	INSUL SIZE	WIRE SIZE	STRIP COLOR	STYLE	BODY FINISH	SLEEVE FINISH	PART NO
50	LOOSE PIECE, BOX	10	.115-.200	10	BROWN	B				9-320568-2
50	LOOSE PIECE, BOX	12	.095-.200	12	YELLOW	B				8-320568-2
50	LOOSE PIECE, BOX	12-10	.150-.230	12-10	--	A				7-320568-2
500	ON TAPE, LG. BOX	12-10	.150-.230	12-10	--	A				2-320568-6
---	LOOSE PIECE	10	.119-.200	10	BROWN	B	4			2-320568-3
---	LOOSE PIECE	12	.095-.200	12	YELLOW	B	6			2-320568-2
2500	ON TAPE & REEL	12-10	.150-.230	12-10	--	A	6			2-320568-1
---	LOOSE PIECE	12-10	.150-.230	12-10	--	A	5			320568

CUSTOMER SERVICE SYSTEMS	
FOR ADDITIONAL PRODUCT INFORMATION OR COPIES OF DRAWINGS AND TECHNICAL DOCUMENTS	PRODUCT INFORMATION CENTER 1-800-522-6752
FOR APPLICATION TOOLING INFORMATION	TOOLING ASSISTANCE CENTER 1-800-722-1111
FOR ORDER ENTRY	1-800-526-5142

MAX RECOMMENDED OPERATING TEMPERATURE: 105°C MAX	VOLTAGE RATING: 300 VOLT MAX	CIRCULAR MIL AREA: 2.62-6.64mm <sup>2</sup> (5,180-13,100) STRANDED OR SOLID
THIS DRAWING IS A CONTROLLED DOCUMENT.		
DIMENSIONS: INCHES		
TOLERANCES UNLESS OTHERWISE SPECIFIED:		
0 PL	± .005	
1 PL	± .008	
2 PL	± .010	
3 PL	± .015	
4 PL	± .020	
ANGLES	± .005	
MATERIAL	FINISH	

DR: J.R. RUTH 170009	TE Connectivity
CHK: T. MICHELJUTTI 170009	
APP'D: T. MICHELJUTTI 170009	NAME
PRODUCT SPEC	TERMINAL, RING TONGUE, PIDG
APPLICATION SPEC	WIRE SIZE: 12-10 AWG
WEIGHT	SIZE CASE CODE DRAWING NO
	A2 00779 C-320568
CUSTOMER DRAWING	RESTRICTED TO
SCALE: 5:1	SHEET 1 of 1
REV: T7	