

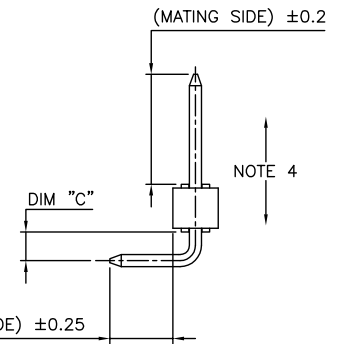
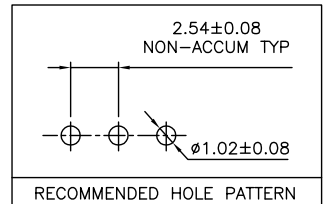
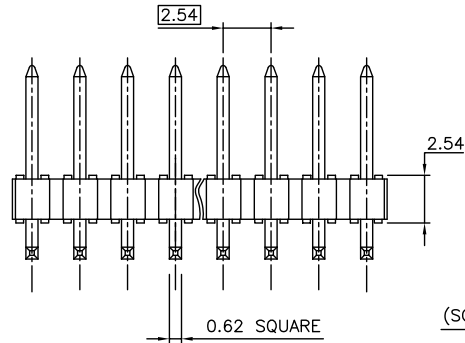
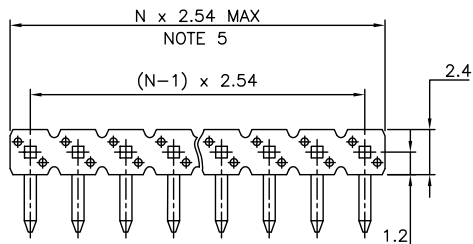
PRODUCT NUMBER

77315-YXX-XXLF

- INDICATES THE PRODUCT IS RoHS COMPATIBLE, SEE NOTE 7
- TOTAL NB OF POSITIONS 02 TO 36
- PACKAGING, NOTE 3
- PIN STYLE SEE SHEET 2
- PLATING SEE SHEET 2

NOTES:

1. HOUSING MAT'L : HIGH TEMPERATURE THERMOPLASTIC. UL94V-0 COLOR: BLACK
2. PIN MATERIAL : PHOSPHOR BRONZE
3. PACKAGING:
  - PACKAGING POLYBAG
  - "V" BLIBOX PACK FOR VALEO
4. 9N MIN RETENTION IN EITHER DIRECTION
5. TO DETERMINE DIMENSIONS :  
N = NUMBER OF POSITIONS PER ROW  
EXAMPLE : 8 POS N x 2.54 = 20.32mm
6. UNDERPLATING : 1.27µm Ni MIN
7. RoHS COMPATIBLE PRODUCT SPECIFICATIONS
  - a - PLATING:
    - "LF" MEANS THE PRODUCT IS LEAD-FREE, 2µm MINIMUM MATTE TIN OVER 1.27µm MINIMUM NICKEL UNDERPLATE.
  - b - MANUFACTURING PROCESS COMPATIBILITY
    - THE HOUSING WILL WITHSTAND EXPOSURE TO 260°C ±5°C SOLDER BATH TEMPERATURE FOR 5 SECONDS IN A WAVE SOLDER APPLICATION WITH A 1.6mm MIN THICK CIRCUIT BOARD.
  - c - LABELING:
    - MEETS PACKAGING SPECS AS PER GS-14-920
  - d - LEGAL STATEMENT: SEE GS-22-008

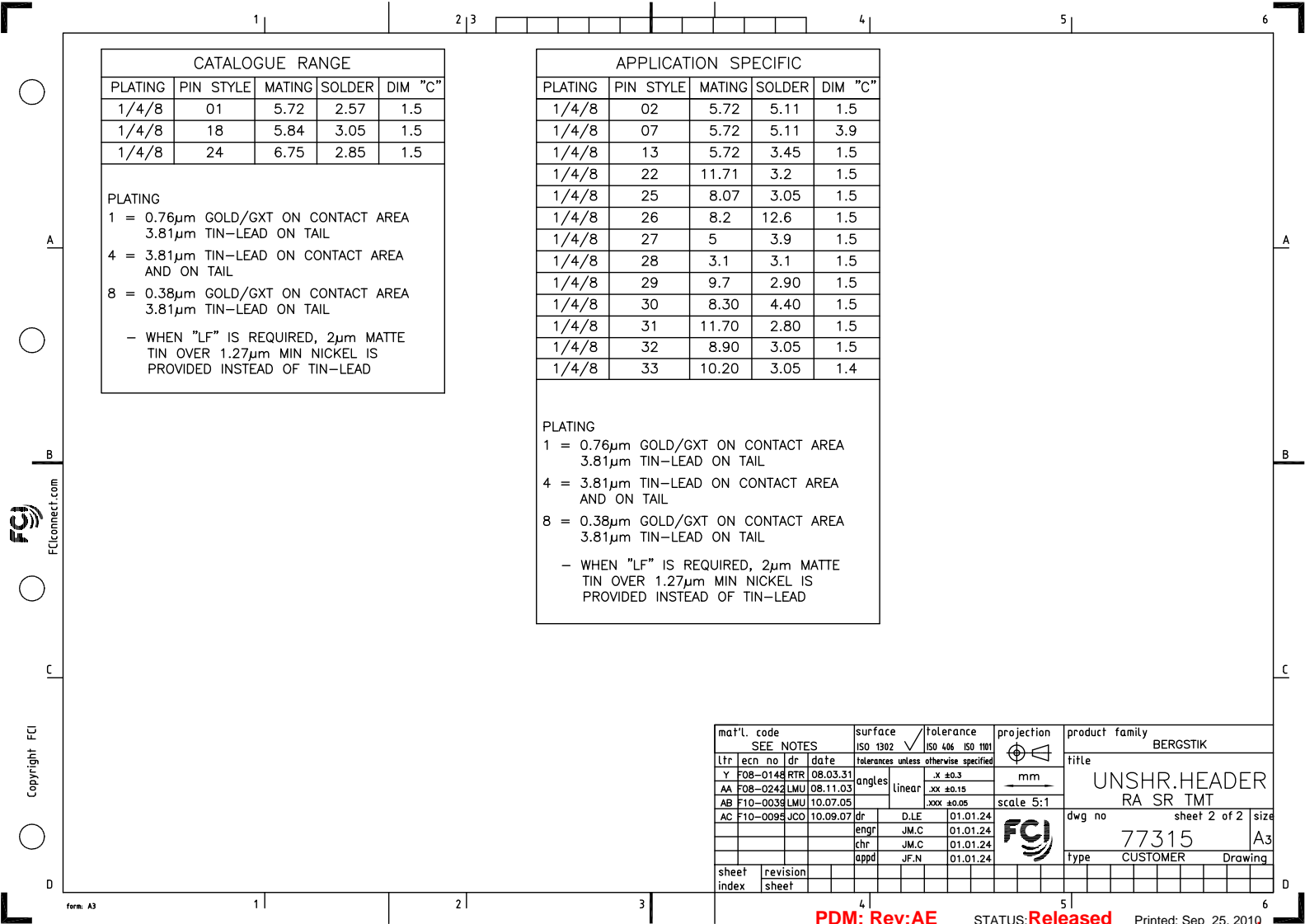


mat'l. code		surface		tolerance		projection		product family	
SEE NOTES		ISO 1302		ISO 406 ISO 1101				BERGSTIK	
ltr	ecn no	dr	date	tolerances unless otherwise specified				title	
AC	F08-0242	LMU	08.11.03	angles	linear	mm		UNSHR.HEADER	
AD	F10-0039	LMU	10.07.05			scale 5:1		RA SR TMT	
AE	F10-0095	JCO	10.09.07	dr	D.LE	01.01.24		dwg no	
				enrg	J.M.C	01.01.24		sheet 1 of 2	
				chr	J.M.C	01.01.24		size	
				appd	J.F.N	01.01.24		A3	
sheet index		revision sheet	AE	AC					
		1	2						

PDM: Rev:AE

STATUS:Released

Printed: Sep 25, 2010



CATALOGUE RANGE				
PLATING	PIN STYLE	MATING	SOLDER	DIM "C"
1/4/8	01	5.72	2.57	1.5
1/4/8	18	5.84	3.05	1.5
1/4/8	24	6.75	2.85	1.5

PLATING  
 1 = 0.76µm GOLD/GXT ON CONTACT AREA  
 3.81µm TIN-LEAD ON TAIL  
 4 = 3.81µm TIN-LEAD ON CONTACT AREA  
 AND ON TAIL  
 8 = 0.38µm GOLD/GXT ON CONTACT AREA  
 3.81µm TIN-LEAD ON TAIL  
 - WHEN "LF" IS REQUIRED, 2µm MATTE  
 TIN OVER 1.27µm MIN NICKEL IS  
 PROVIDED INSTEAD OF TIN-LEAD

APPLICATION SPECIFIC				
PLATING	PIN STYLE	MATING	SOLDER	DIM "C"
1/4/8	02	5.72	5.11	1.5
1/4/8	07	5.72	5.11	3.9
1/4/8	13	5.72	3.45	1.5
1/4/8	22	11.71	3.2	1.5
1/4/8	25	8.07	3.05	1.5
1/4/8	26	8.2	12.6	1.5
1/4/8	27	5	3.9	1.5
1/4/8	28	3.1	3.1	1.5
1/4/8	29	9.7	2.90	1.5
1/4/8	30	8.30	4.40	1.5
1/4/8	31	11.70	2.80	1.5
1/4/8	32	8.90	3.05	1.5
1/4/8	33	10.20	3.05	1.4

PLATING  
 1 = 0.76µm GOLD/GXT ON CONTACT AREA  
 3.81µm TIN-LEAD ON TAIL  
 4 = 3.81µm TIN-LEAD ON CONTACT AREA  
 AND ON TAIL  
 8 = 0.38µm GOLD/GXT ON CONTACT AREA  
 3.81µm TIN-LEAD ON TAIL  
 - WHEN "LF" IS REQUIRED, 2µm MATTE  
 TIN OVER 1.27µm MIN NICKEL IS  
 PROVIDED INSTEAD OF TIN-LEAD

mat'l. code		surface		tolerance		projection		product family	
SEE NOTES		ISO 1302		ISO 406 ISO 1101				BERGSTIK	
Ltr	ecm no	dr	date	tolerances unless otherwise specified		mm		title	
Y	F08-0148	RTR	08.03.31	angles	linear	.x ±0.3		UNSHR.HEADER	
AA	F08-0242	LMU	08.11.03			.xx ±0.15		RA SR TMT	
AB	F10-0039	LMU	10.07.05			.xxx ±0.05		scale 5:1	
AC	F10-0095	JCO	10.09.07	dr	D.LE	01.01.24		dwg no	
				enrg	JM.C	01.01.24		sheet 2 of 2	
				chr	JM.C	01.01.24		size	
				appd	JF.N	01.01.24		A3	
sheet index		revision sheet						type	
								CUSTOMER Drawing	