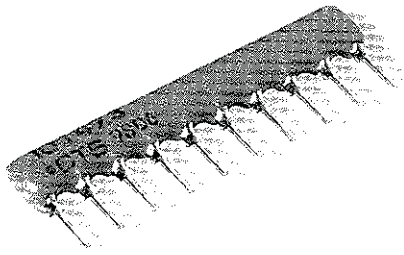


Single-In-Line Conform



Thick film resistor network single-in-line package

CTS' expertise in resistor network technology is available in space-saving conformal products.

- High-reliability cermet resistors
- 2% standard resistor tolerance
- Laser marking for permanent identification
- High-temperature solder
- Tapered packaging available
- Low profile
- Low cost

Resistance Range:

Standard: 10Ω through 1 MegΩ

Resistance Tolerance:

Standard: ±2% or 0.5Ω (whichever is greater)

Maximum Operating Voltage:

100V not to exceed rated power

Temperature Coefficient:

±100PPM/°C ≥50Ω

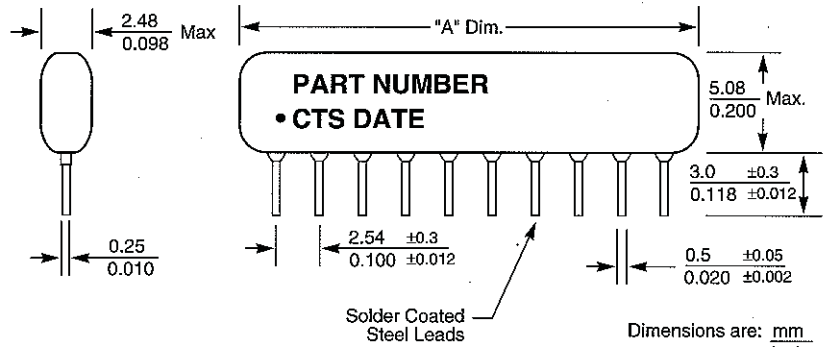
±200PPM/°C <50Ω

Operating Temperature Range:

-55°C to +125°C

Dielectric Strength:

200 VDC



NOTES:

- Dimensions are mm/in.
- Steel Leads, Solder Coated
- Product Color Gold

Dimensions are: $\frac{\text{mm}}{\text{inch}}$

Product Color: Gold

Number Pins	"A" Dimension ±0.25/0.010 mm/in	Package Power @25°C	Package Power @70°C
4	10.2/0.4	0.60 W	0.40 W
5	12.7/0.5	0.83 W	0.52 W
6	15.3/0.6	0.96 W	0.64 W
7	17.8/0.7	1.18 W	0.76 W
8	20.4/0.8	1.32 W	0.88 W
9	22.9/0.9	1.49 W	1.00 W
10	25.4/1.0	1.66 W	1.11 W
11	28.0/1.1	1.83 W	1.24 W
12	30.5/1.2	2.00W	1.35 W
Schematic		Resistor Power @25°C	Resistor Power @70°C
1 & 5		0.15 W	0.10 W
3 (isolated)		0.30 W	0.20 W

Standard Dual Terminator Values

R1	R2	Thev	Code	R1	R2	Thev	Code
80Ω	130Ω	50Ω	800/131	180Ω	390Ω	123Ω	181/391
120Ω	200Ω	75Ω	121/201	220Ω	330Ω	132Ω	221/331
160Ω	260Ω	100Ω	161/261	330Ω	390Ω	178Ω	331/391
220Ω	270Ω	121Ω	221/271	330Ω	470Ω	194Ω	331/471

Power Derating	page 45
Land Patterns	pages 46-47
Packaging	pages 48-49
Environmental Performance Specifications	pages 50-51

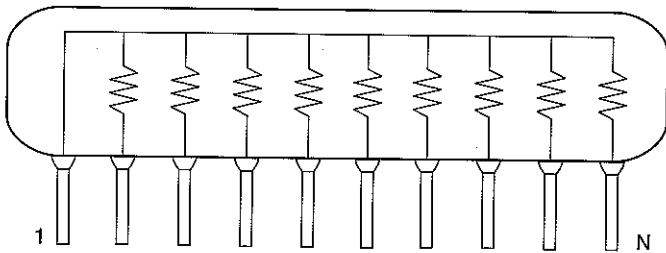
CTS

CTS Resistor Products • 406 Parr Road • Berne, IN • 46711 • fax: (219)589-3243 • www.ctscorp.com

Series 773

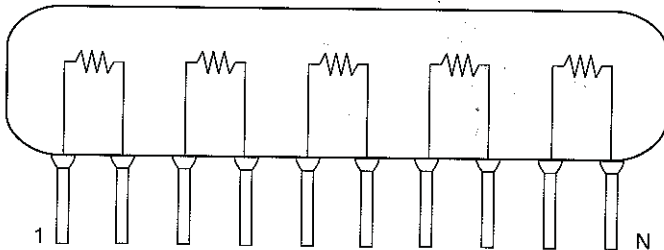
Bussed CTS Schematic 1

Available in
4 through 12 Pins



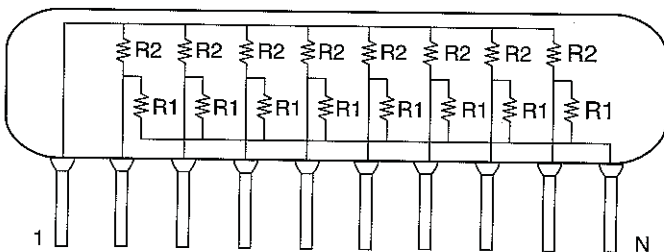
Isolated CTS Schematic 3

Available in
4, 6, 8, 10, 12 Pins



Dual Terminator CTS Schematic 5

Available in
6, 8, 10 Pins



(Ohms)	EIA Code	(Ohms)	EIA Code
10	100	3300	332
12	120	3900	392
15	150	4700	472
18	180	5100	512
22	220	5600	562
27	270	6800	682
33	330	8200	822
39	390	10000	103
47	470	11000	113
51	510	12000	123
56	560	15000	153
68	680	18000	183
75	750	20000	203
82	820	22000	223
100	101	27000	273
110	111	33000	333
120	121	39000	393
150	151	47000	473
180	181	51000	513
200	201	56000	563
220	221	68000	683
270	271	82000	823
330	331	100000	104
390	391	110000	114
470	471	120000	124
510	511	150000	154
560	561	180000	184
680	681	220000	224
820	821	270000	274
1000	102	330000	334
1100	112	390000	394
1200	122	470000	474
1500	152	510000	514
1800	182	560000	564
2200	222	680000	684
2700	272	820000	824
		1000000	105

**How to Order
Series 773 Products**

773

10

3

103

Series 773

No. of Pins

Resistor Code Schematics 1 & 3
Resistor Code Schematic 5
Example 221/331 = 220Ω/330Ω
All standard part numbers are ±2%

Schematic 1 Bussed
3 Isolated
5 Dual Terminator

NOTE: No dashes or spaces to appear in part number.

Example: 773103103

See page 45 for part marking information.