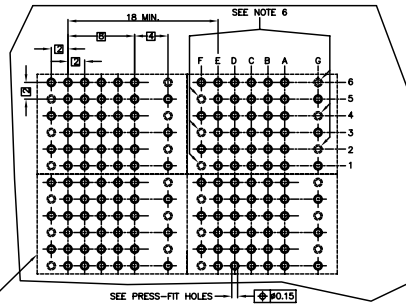
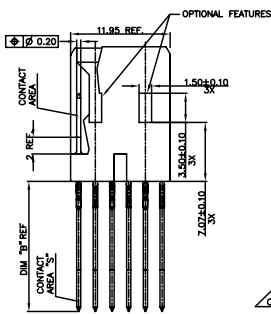
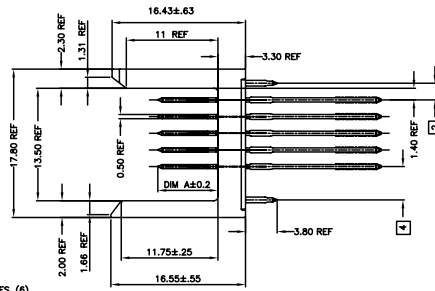
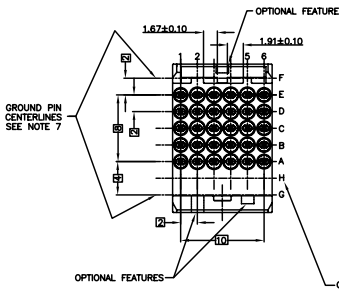


PRODUCT NUMBER
70437-XXX
70437-XYLF



- NOTES:
- FOR DIM "A", AND "B" SEE SHEET 2
 - BODY MAT'L: ZINC ALLOY
 - PIN MAT'L: PHOSPHOR BRONZE
 - CONTACT AREA "S" ONLY FOR REAR PLUG-UP
 - PLATING ON PRESSFIT AREA: -XXX IS SnPb
-XYLF IS Sn (LEAD FREE)
 - THESE HOLES ARE NEEDED WHEN USING AN EE SHROUD, I.E., 70438-111.
 - GROUND PINS IN POSITIONS F2, F4, F6, G1, G3, AND G5.
 - DIM "A" AFTER ASSEMBLY TO BOARDS.
 - THE PRODUCTS WHERE THE PART NUMBER ENDS IN LF MEET THE EUROPEAN UNION DIRECTIVES AND OTHER COUNTRY REGULATIONS AS DESCRIBED IN GS-22-006. THESE PRODUCTS WILL NOT WITHSTAND WAVE SOLDER OR REFLOW OPERATIONS.
 - FOR LEAD FREE PART NUMBERS, ADD AN "LF" SUFFIX. EXAMPLE: 70437-X11LF.

PLATING IN CONTACT AREA	
DASH NUMBER	PERFORMANCE LEVEL
-1YY	TELCORDIA C0
-2YY	TELECOM CLASS
-3YY	IEC CLASS 1
-5YY	TELCORDIA UE
-9YY	0.787m GXT
-1YYLF	TELCORDIA C0
-2YYLF	TELECOM CLASS
-5YYLF	IEC CLASS 1
-9YYLF	TELCORDIA UE
-9YYLF	0.787m GXT

mat'l code		surface	tolerance	projection	product family
		ASME Y14.5 ✓	ASME Y14.5	MM	METRAL (tm)
ltr	ecn no	dr	date	tolerances unless otherwise specified	title
K	V00701	JWS	200-02-24	angles X ±3	5 ROW P.F. HEADER HOUSING ASSEMBLY - EE
L	V11860	CGD	2001-07-12	ch'r XX ±.8	
M	V05-0575	DAI	2005-08-08	0' ±2'	scale 1:1
N	V06-0606	JRV	2006-06-21	dr S. STONER 1995-03-07	dwg no sheet 1 of 2 size
				engr R. DOUTRICH 1995-03-07	70437 A4
				ch'r S. STONER 1995-03-07	type CUSTOMER Drawing
				appd S. STONER 1995-03-07	
sheet	revision	N	N		
index	sheet	1	2		

Copyright FCI



FCIconnect.com

1

2

3

4

PRODUCT NUMBER	ROW	DIM"A"	DIM"B"	PRODUCT NUMBER	ROW	DIM"A"	DIM"B"	PRODUCT NUMBER	ROW	DIM"A"	DIM"B"
70437-X11 NOTE 10 LEAD FREE OPTION	E	6.50	4.30	70437-X21 NOTE 10 LEAD FREE OPTION	E	6.50	13.60	70437-X31 NOTE 10 LEAD FREE OPTION	E	6.50	17.00
	D	6.50	4.30		D	6.50	13.60		D	6.50	17.00
	C	6.50	4.30		C	6.50	13.60		C	6.50	17.00
	B	6.50	4.30		B	6.50	13.60		B	6.50	17.00
70437-X12 NOTE 10 LEAD FREE OPTION	A	6.50	4.30	70437-X22 NOTE 10 LEAD FREE OPTION	A	6.50	13.60	70437-X32 NOTE 10 LEAD FREE OPTION	A	6.50	17.00
	E	5.75	4.30		E	5.75	13.60		E	5.75	17.00
	D	5.75	4.30		D	5.75	13.60		D	5.75	17.00
	C	5.75	4.30		C	5.75	13.60		C	5.75	17.00
70437-X13 NOTE 10 LEAD FREE OPTION	B	5.75	4.30	70437-X23 NOTE 10 LEAD FREE OPTION	B	5.75	13.60	70437-X33 NOTE 10 LEAD FREE OPTION	B	5.75	17.00
	A	6.50	4.30		A	6.50	13.60		A	6.50	17.00
	E	5.75	4.30		E	5.75	13.60		E	5.75	17.00
	D	5.75	4.30		D	5.75	13.60		D	5.75	17.00
70437-X14 NOTE 10 LEAD FREE OPTION	C	5.75	4.30	70437-X24 NOTE 10 LEAD FREE OPTION	C	5.75	13.60	70437-X34 NOTE 10 LEAD FREE OPTION	C	5.75	17.00
	B	5.75	4.30		B	5.75	13.60		B	5.75	17.00
	A	6.50	4.30		A	6.50	13.60		A	6.50	17.00
	E	5.75	4.30		E	5.75	13.60		E	5.75	17.00
70437-X16 NOTE 10 LEAD FREE OPTION	D	5.75	4.30	70437-X26 NOTE 10 LEAD FREE OPTION	D	5.75	13.60	70437-X36 NOTE 10 LEAD FREE OPTION	D	5.75	17.00
	C	5.75	4.30		C	5.75	13.60		C	5.75	17.00
	B	5.75	4.30		B	5.75	13.60		B	5.75	17.00
	A	5.75	4.30		A	5.75	13.60		A	5.75	17.00
70437-X17 NOTE 10 LEAD FREE OPTION	E	8.00	4.30	70437-X27 NOTE 10 LEAD FREE OPTION	E	8.00	13.60	70437-X37 NOTE 10 LEAD FREE OPTION	E	8.00	17.00
	D	8.00	4.30		D	8.00	13.60		D	8.00	17.00
	C	8.00	4.30		C	8.00	13.60		C	8.00	17.00
	B	8.00	4.30		B	8.00	13.60		B	8.00	17.00
70437-X18 NOTE 10 LEAD FREE OPTION	A	8.00	4.30	70437-X28 NOTE 10 LEAD FREE OPTION	A	8.00	13.60	70437-X38 NOTE 10 LEAD FREE OPTION	A	8.00	17.00
	E	5.00	4.30		E	5.00	13.60		E	5.00	17.00
	D	5.00	4.30		D	5.00	13.60		D	5.00	17.00
	C	5.00	4.30		C	5.00	13.60		C	5.00	17.00
70437-X19 NOTE 10 LEAD FREE OPTION	B	5.00	4.30	70437-X29 NOTE 10 LEAD FREE OPTION	B	5.00	13.60	70437-X39 NOTE 10 LEAD FREE OPTION	B	5.00	17.00
	A	5.00	4.30		A	5.00	13.60		A	5.00	17.00
	E	6.50	4.30		E	6.50	13.60		E	6.50	17.00
	D	6.50	4.30		D	6.50	13.60		D	6.50	17.00
70437-X20 NOTE 10 LEAD FREE OPTION	C	6.50	4.30	70437-X30 NOTE 10 LEAD FREE OPTION	C	6.50	13.60	70437-X40 NOTE 10 LEAD FREE OPTION	C	6.50	17.00
	B	6.50	4.30		B	6.50	13.60		B	6.50	17.00
	A	7.25	4.30		A	7.25	13.60		A	7.25	17.00

NO REAR PLUG-UP

REAR PLUG-UP OR WIRE WRAP

REAR PLUG-UP AND WIRE WRAP

mat'l. code	-	surface	ASME Y14.5 ✓	tolerance	ASME Y14.5	projection	product family	METRAL (tm)
ltr	ecn no	dr	date	tolerances unless otherwise specified		MM	title	5 ROW P.F. HEADER HOUSING ASSEMBLY - EE
N				angles	X *3			
				0° ±2'	XX *B	scale 1:1	dwg no	sheet 2 of
					XXX *051			
		dr	S. STONER	1995-03-07		FCI	70437	size A4
		engr	R. DOUTRICH	1995-03-07				
		chr	S. STONER	1995-03-07				
		appd	S. STONER	1995-03-07				
sheet index	revision	sheet					type	CUSTOMER Drawing

form A4mmX1c

1

2

3

4

PDM: Rev:N

STATUS: Released

Printed: Nov 13, 2007