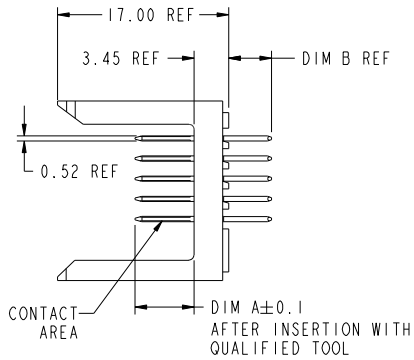
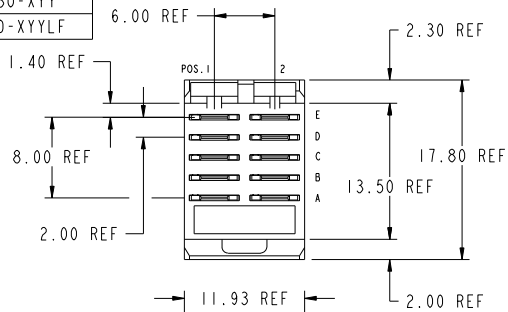


PRODUCT NUMBER
70430-XYX
70430-XYLF



- NOTES:
- FOR DIM A, AND B SEE SHEET 2 AND UP.
  - BODY MATERIAL: LIQUID CRYSTAL POLYMER 30 % GLASS. FLAME RETARDANT ACC. UL 94-V0.
  - PIW MATERIAL PHOSPHOR BRONZE.
  - PLATING ON PRESS-FIT TAIL:  
70430-XYX IS SnPb  
70430-XYLF IS Sn (LEAD FREE)  
PLATING ON CONTACT AREA CONFORMS TO PERFORMANCE LEVEL SHOWN IN TABLE BELOW.
  - PRODUCT MARKING:  
PART NUMBER DESIGNATION & BATCH I.D.
  - ALL PRODUCTS WITH PART NUMBERS SHOWN IN SUBSEQUENT TABLES WILL BE PACKAGED IN TUBES. IF TRAY PACKAGING IS REQUIRED, SUFFIX "P" WILL BE ADDED TO THE END OF THE PART NUMBER. EXAMPLE: XXXXX-XXXXP
  - PRODUCT SPECIFICATION: GS-12-180  
APPLICATION SPECIFICATION: BUS-20-075
  - THE PRODUCTS WHERE THE PART NUMBER ENDS IN 'LF' MEETS THE EUROPEAN UNION DIRECTIVES AND OTHER COUNTRY REGULATIONS AS DESCRIBED IN GS-22-008.
  - ALL PRODUCTS WILL WITHSTAND EXPOSURE TO 260°C FOR 60 SECONDS IN A CONVECTION, INFRA-RED OR VAPOR PHASE REFLOW OVEN.

PLATING IN CONTACT AREA	
DASH NUMBER	PERFORMANCE LEVEL
-1YY	TELCORDIA CO & IEC CLASS I
-2YY	TELECOM CLASS
-3YY	TELCORDIA CO & IEC CLASS I
-5YY	TELCORDIA UE
-1YYLF	TELCORDIA CO & IEC CLASS I
-2YYLF	TELECOM CLASS
-5YYLF	TELCORDIA UE



This document is the property of, and embodies CONFIDENTIAL and PROPRIETARY information of FCI. No part of the information shown on this document may be used in any way or be disclosed to others without the written consent of FCI. Copyright FCI.

mat'l code		SEE NOTES		tolerances unless otherwise specified		CUSTOMER	
ltr	con no.	dr	date	linear	0.X ± 0.3	COPY	
AN	V06-0498	DCH	2006-06-02		0.XX ± 0.13	projection	
AP	V06-0671	DCH	2006-07-13		.XXX ± .051		
AR	V06-0948	DCH	2006-09-12	angles	0° ± 2°		
AS	DG09-0256	TER	2009-08-19	dr	I.BRINGARD 01/26/00		
AT	DG09-0366	TER	2009-11-24	eng	M.STRAMSER 01/26/00		
AU	DG10-0002	TER	2010-01-05	chr	M.STRAMSER 01/26/00	scale	
				appd	M.STRAMSER 02/29/00	2:1	
sheet	revision	AU	AU	AU	AU	AU	
index	sheet	1	2	3	4	5	6

<b>FCI</b>		www.fciconnect.com	
title METRAL POWER HEADER			
I MOD, 5 ROW PRESS-FIT			
product family	METRAL	code	213
size	dwg no	70430	sheet 1 of 6
cage code		22526	

REV: 2006-04-10

1 | 2

Pro/E

3 |

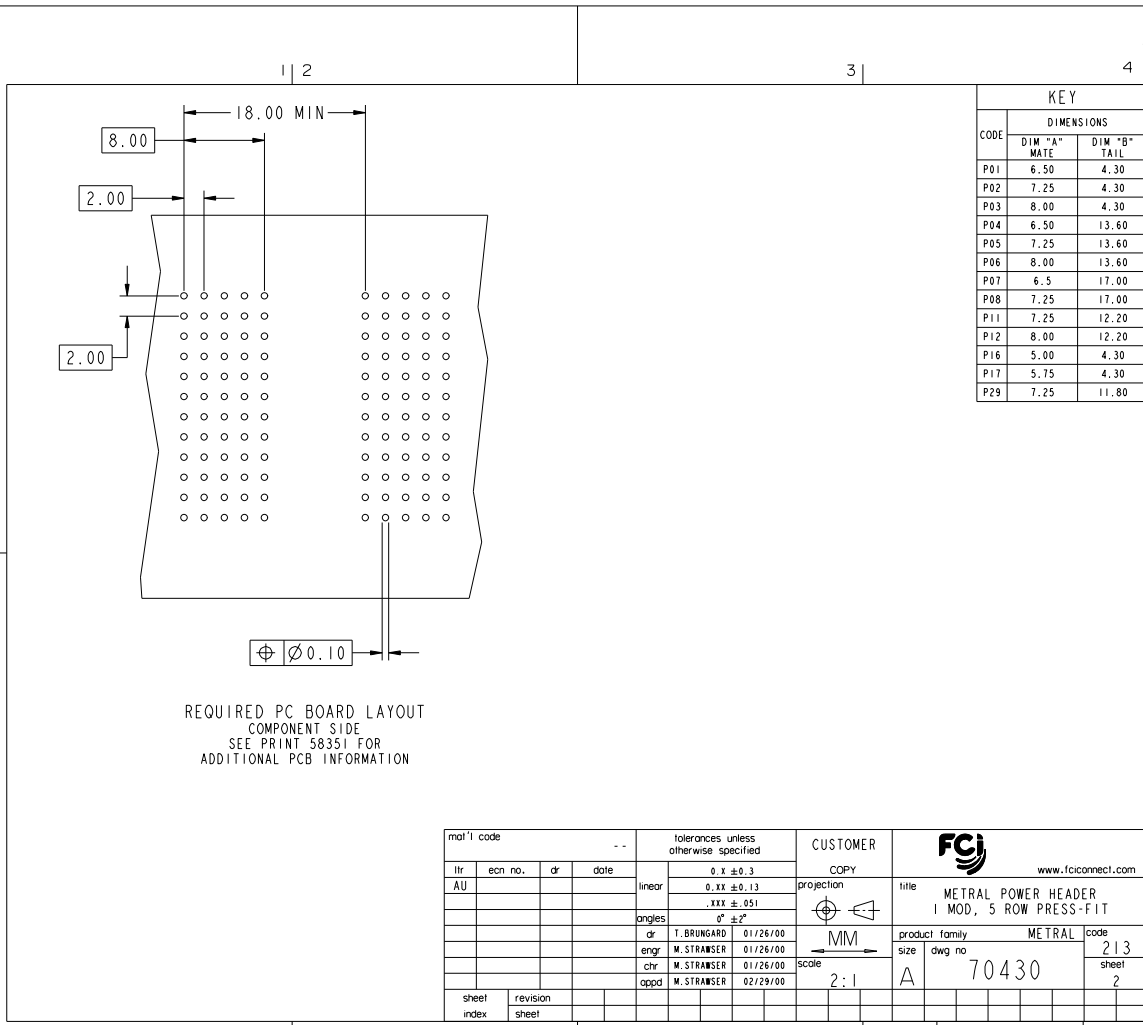
cage code 22526

4



This document is the property of, and embodies CONFIDENTIAL and PROPRIETARY information of FCJ. No part of the information shown on this document may be used in any way or disclosed to others without the written consent of FCJ. Copyright FCJ.

REV: 2008-04-08



CODE	DIMENSIONS	
	DIM "A" MATE	DIM "B" TAIL
P01	6.50	4.30
P02	7.25	4.30
P03	8.00	4.30
P04	6.50	13.60
P05	7.25	13.60
P06	8.00	13.60
P07	6.5	17.00
P08	7.25	17.00
P11	7.25	12.20
P12	8.00	12.20
P16	5.00	4.30
P17	5.75	4.30
P29	7.25	11.80

REQUIRED PC BOARD LAYOUT  
COMPONENT SIDE  
SEE PRINT 58351 FOR  
ADDITIONAL PCB INFORMATION

mat'l code				tolerances unless otherwise specified		CUSTOMER		FCJ		www.fcjconnect.com		
litr	ecm no.	dr	date	linear	0.X ±0.3	projection	COPY		title			
AU					0.XX ±0.13		METRAL POWER HEADER		I MOD, 5 ROW PRESS-FIT			
				angles	.XXX ±.051			product family	METRAL		code	213
				dr	0° ±2°	MM	size	dwg no	70430		sheet	2
				eng	I.BRINGARD 01/26/00	scale	A					
				chr	M.STRAMSER 01/26/00	2:1						
				appd	M.STRAMSER 02/29/00							
sheet index	revision sheet								cage code		22526	

PDM: Rev:AU

STATUS:Released

Printed: Jan 06, 2010



This document is the property of, and embodies CONFIDENTIAL and PROPRIETARY information of FCJ. No part of the information shown on this document may be used in any way or disclosed to anyone without the written consent of FCJ. Copyright FCJ.

METRAL P/N	ROW	CONTACT CODE MOD. 1	
		1	2
70430-X01 SEE NOTE 4 FOR LEAD-FREE CODE	E	-	-
	D	P03	P03
	C	P02	P02
	B	P01	P01
A	P03	P03	

METRAL P/N	ROW	CONTACT CODE MOD. 1	
		1	2
70430-X02 SEE NOTE 4 FOR LEAD-FREE CODE	E	P01	P01
	D	P02	P02
	C	P03	P03
	B	-	-
A	P03	P03	

METRAL P/N	ROW	CONTACT CODE MOD. 1	
		1	2
70430-X03 SEE NOTE 4 FOR LEAD-FREE CODE	E	P02	P01
	D	-	-
	C	P01	P01
	B	P01	P01
A	P01	P01	

METRAL P/N	ROW	CONTACT CODE MOD. 1	
		1	2
70430-X04 SEE NOTE 4 FOR LEAD-FREE CODE	E	P02	P01
	D	P03	P03
	C	-	-
	B	P01	P01
A	P03	P03	

METRAL P/N	ROW	CONTACT CODE MOD. 1	
		1	2
70430-X05 SEE NOTE 4 FOR LEAD-FREE CODE	E	P03	P01
	D	P03	P01
	C	P03	P01
	B	P03	P01
A	P03	P01	

METRAL P/N	ROW	CONTACT CODE MOD. 1	
		1	2
70430-X06 SEE NOTE 4 FOR LEAD-FREE CODE	E	P03	P03
	D	P02	P02
	C	P01	P01
	B	-	-
A	P03	P03	

METRAL P/N	ROW	CONTACT CODE MOD. 1	
		1	2
70430-X07 SEE NOTE 4 FOR LEAD-FREE CODE	E	P01	P01
	D	-	-
	C	-	-
	B	-	-
A	P01	P01	

METRAL P/N	ROW	CONTACT CODE MOD. 1	
		1	2
70430-X08 SEE NOTE 4 FOR LEAD-FREE CODE	E	P03	P02
	D	-	-
	C	P03	P02
	B	-	-
A	P03	P02	

METRAL P/N	ROW	CONTACT CODE MOD. 1	
		1	2
70430-X09 SEE NOTE 4 FOR LEAD-FREE CODE	E	P02	P01
	D	P02	P01
	C	P02	P01
	B	P02	P01
A	P02	P01	

METRAL P/N	ROW	CONTACT CODE MOD. 1	
		1	2
70430-X10 SEE NOTE 4 FOR LEAD-FREE CODE	E	P01	P01
	D	P01	P01
	C	P02	P02
	B	P03	P03
A	-	-	

METRAL P/N	ROW	CONTACT CODE MOD. 1	
		1	2
70430-X11 SEE NOTE 4 FOR LEAD-FREE CODE	E	P02	P03
	D	P02	P03
	C	P03	P03
	B	P03	P03
A	P03	P03	

METRAL P/N	ROW	CONTACT CODE MOD. 1	
		1	2
70430-X12 SEE NOTE 4 FOR LEAD-FREE CODE	E	P02	P03
	D	P02	P03
	C	P02	P03
	B	P02	P03
A	P02	P03	

METRAL P/N	ROW	CONTACT CODE MOD. 1	
		1	2
70430-X13 SEE NOTE 4 FOR LEAD-FREE CODE	E	P01	P02
	D	P01	P02
	C	P03	P03
	B	P03	P03
A	P03	P03	

METRAL P/N	ROW	CONTACT CODE MOD. 1	
		1	2
70430-X14 SEE NOTE 4 FOR LEAD-FREE CODE	E	P01	P01
	D	P01	P01
	C	-	-
	B	P03	P03
A	P02	P02	

METRAL P/N	ROW	CONTACT CODE MOD. 1	
		1	2
70430-X15 SEE NOTE 4 FOR LEAD-FREE CODE	E	P06	P05
	D	P06	P05
	C	P06	P05
	B	P06	P05
A	P06	P05	

METRAL P/N	ROW	CONTACT CODE MOD. 1	
		1	2
70430-X16 SEE NOTE 4 FOR LEAD-FREE CODE	E	P03	P02
	D	P03	P02
	C	P03	P02
	B	P03	P02
A	P03	P02	

METRAL P/N	ROW	CONTACT CODE MOD. 1	
		1	2
70430-X17 SEE NOTE 4 FOR LEAD-FREE CODE	E	P03	P03
	D	P03	P03
	C	-	-
	B	P03	P03
A	P03	P03	

METRAL P/N	ROW	CONTACT CODE MOD. 1	
		1	2
70430-X18 SEE NOTE 4 FOR LEAD-FREE CODE	E	P01	P02
	D	P01	P02
	C	P01	P02
	B	P01	P02
A	P01	P02	

METRAL P/N	ROW	CONTACT CODE MOD. 1	
		1	2
70430-X19 SEE NOTE 4 FOR LEAD-FREE CODE	E	P02	P02
	D	P01	P02
	C	P01	P02
	B	P01	P02
A	P02	P02	

METRAL P/N	ROW	CONTACT CODE MOD. 1	
		1	2
70430-X20 SEE NOTE 4 FOR LEAD-FREE CODE	E	P05	P05
	D	P05	P05
	C	P05	P05
	B	P05	P05
A	P06	P06	

mat'l code		--		tolerances unless otherwise specified		CUSTOMER		www.fcjconnect.com	
ltr	ecm no.	dr	date	linear	0.X ±0.3	projection		title	
AU				angles	0.XX ±0.13	MM		METRAL POWER HEADER	
				eng	.XXX ±.051	scale	product family	I MOD, 5 ROW PRESS-FIT	
				chr	0" ±.2"	2:1	size	METRAL	code
				appd	I.BRINGARD 01/26/00		dwg no	70430	213
sheet index	revision sheet				M.STRAMSER 01/26/00			sheet	3
					M.STRAMSER 01/26/00				
					M.STRAMSER 02/29/00				

REV: 200-04-00

1 | 2

Pro/E

3 |

cage code 22526

4



This document is the property of, and embodies CONFIDENTIAL and PROPRIETARY information of FCJ. No part of the information shown on this document may be used in any way or disclosed to anyone without the written consent of FCJ. Copyright FCJ.

METRAL P/N			CONTACT CODE MOD. I		METRAL P/N			CONTACT CODE MOD. I		METRAL P/N			CONTACT CODE MOD. I		METRAL P/N			CONTACT CODE MOD. I						
ROW	I	2	I	2	ROW	I	2	I	2	ROW	I	2	I	2	ROW	I	2	I	2					
70430-X21 SEE NOTE 4 FOR LEAD-FREE CODE			E	P02 P02	70430-X25 SEE NOTE 4 FOR LEAD-FREE CODE			E	P04 P06	70430-X29 SEE NOTE 4 FOR LEAD-FREE CODE			E	P04 P05	70430-X33 SEE NOTE 4 FOR LEAD-FREE CODE			E	P02 -	70430-X37 SEE NOTE 4 FOR LEAD-FREE CODE			E	P01 P02
D	P02 P02	D	P04 P06	D	P05 P05	D	P02 -	D	P01 P02	D	P02 -	D	P01 P01	D	P02 -	D	P02 P02	D	P01 P01	D	P02 P02	D	P01 P01	
C	P02 P02	C	P04 P06	C	P05 P05	C	P02 -	C	P01 P01	C	P02 -	C	P02 P02	C	P01 P01	C	P02 P02	C	P02 P02	C	P02 P02	C	P01 P01	
B	P02 P02	B	P04 P06	B	P05 P05	B	P02 -	B	P02 P02	B	P01 P01	B	P02 P02	B	P01 P01	B	P02 P02	B	P01 P01	B	P01 P01	B	P01 P01	
A	P03 P03	A	P04 P06	A	P05 P05	A	P02 -	A	P02 P02	A	P01 P01	A	P02 P02	A	P02 P02	A	P02 P02	A	P02 P02	A	P02 P02	A	P02 P02	
70430-X22 SEE NOTE 4 FOR LEAD-FREE CODE			E	P06 P06	70430-X26 SEE NOTE 4 FOR LEAD-FREE CODE			E	P03 P03	70430-X30 SEE NOTE 4 FOR LEAD-FREE CODE			E	P01 P02	70430-X34 SEE NOTE 4 FOR LEAD-FREE CODE			E	P02 -	70430-X38 SEE NOTE 4 FOR LEAD-FREE CODE			E	P02 P02
D	P06 P06	D	P02 P02	D	P02 P02	D	P02 P02	D	P01 P01	D	P02 P02	D	- P01	D	P01 P01	D	P01 P01	D	P01 P01	D	P01 P01	D	P01 P01	
C	P06 P05	C	P01 P01	C	P01 P01	C	P02 P02	C	P02 P02	C	P02 P02	C	- P01	C	P01 P01	C	P02 P01	C	P02 P01	C	P02 P01	C	P02 P01	
B	P06 P05	B	- -	B	- -	B	P02 P02	B	P02 P02	B	- P01	B	- P01	B	P01 P01	B	P01 P01	B	P01 P01	B	P01 P01	B	P01 P01	
A	P06 P06	A	P03 -	A	P03 -	A	P02 P02	A	P02 P02	A	P02 P02	A	- P01	A	P02 P01	A	P02 P01	A	P02 P01	A	P02 P01	A	P02 P01	
70430-X23 SEE NOTE 4 FOR LEAD-FREE CODE			E	P03 P03	70430-X27 SEE NOTE 4 FOR LEAD-FREE CODE			E	P06 P04	70430-X31 SEE NOTE 4 FOR LEAD-FREE CODE			E	P01 P01	70430-X35 SEE NOTE 4 FOR LEAD-FREE CODE			E	P01 P02	70430-X39 SEE NOTE 4 FOR LEAD-FREE CODE			E	P01 P17
D	P03 P03	D	P06 P06	D	P06 P06	D	P01 P01	D	P01 P01	D	P01 P01	D	P02 P01	D	P01 P17	D	P01 P17	D	P01 P17	D	P01 P17	D	P01 P17	
C	P03 P02	C	P06 P06	C	P06 P06	C	P01 P01	C	P01 P01	C	P01 P01	C	P01 P02	C	P01 P17	C	P01 P17	C	P01 P17	C	P01 P17	C	P01 P17	
B	P03 P02	B	P06 P06	B	P06 P06	B	P01 P01	B	P03 P01	B	P03 P01	B	P01 P01	B	P01 P17	B	P01 P17	B	P01 P17	B	P01 P17	B	P01 P17	
A	P03 P03	A	P06 P06	A	P06 P06	A	P01 P01	A	P03 P01	A	P03 P01	A	P02 P01	A	P01 P17	A	P01 P17	A	P01 P17	A	P01 P17	A	P01 P17	
70430-X24 SEE NOTE 4 FOR LEAD-FREE CODE			E	P01 P03	70430-X28 SEE NOTE 4 FOR LEAD-FREE CODE			E	P03 P01	70430-X32 SEE NOTE 4 FOR LEAD-FREE CODE			E	P05 P06	70430-X36 SEE NOTE 4 FOR LEAD-FREE CODE			E	P01 P02	70430-X40 SEE NOTE 4 FOR LEAD-FREE CODE			E	P03 P01
D	P01 P03	D	P03 P03	D	P03 P03	D	P05 P06	D	P05 P06	D	P02 P01	D	P01 P02	D	P03 P03	D	P03 P03	D	P01 P02	D	P03 P03	D	P03 P03	
C	P01 P03	C	P03 P03	C	P03 P03	C	P05 P06	C	P05 P06	C	P01 P02	C	P01 P01	C	P03 P03	C	P03 P03	C	P01 P01	C	P03 P03	C	P03 P03	
B	P01 P03	B	P03 P03	B	P03 P03	B	P05 P06	B	P05 P06	B	P01 P01	B	P01 P01	B	P03 P03	B	P03 P03	B	P01 P01	B	P03 P03	B	P03 P03	
A	P01 P03	A	P03 P03	A	P03 P03	A	P05 P06	A	P05 P06	A	P02 P02	A	P02 P02	A	P03 P03	A	P03 P03	A	P02 P02	A	P03 P03	A	P03 P03	

mat'l code		--		tolerances unless otherwise specified		CUSTOMER		www.fcjconnect.com	
lir	ecm no.	dr	date	linear	0.X ±0.3	projection	title	METRAL POWER HEADER	
AU				angles	0.XX ±0.13	MM	I MOD, 5 ROW PRESS-FIT		
				eng	.XXX ±.051	scale	product family	METRAL	
				chr	0" ±.2"	1:1	size	213	
				appd	I.BRINGARD 01/26/00		dwg no	70430	
					M.STRAMSER 01/26/00		sheet	4	
					M.STRAMSER 01/26/00				
sheet index	revision sheet								

REV 1 - 200-04-00

1 | 2

Pro/E

3 |

cage code 22526

4



This document is the property of, and embodies CONFIDENTIAL and PROPRIETARY information of FCI. No part of the information shown on this document may be used in any way or disclosed to anyone other than the written consent of FCI. Copyright FCI.

METRAL P/N	ROW	CONTACT CODE MOD. 1	
		1	2
70430-x41 SEE NOTE 4 FOR LEAD-FREE CODE	E	P06	P04
	D	P06	P06
	C	P06	P06
	B	P06	P06
A	P06	P06	
70430-x42 SEE NOTE 4 FOR LEAD-FREE CODE	E	P01	P02
	D	P02	P02
	C	P02	P02
	B	P02	P02
A	P02	P02	
70430-x43 SEE NOTE 4 FOR LEAD-FREE CODE	E	P04	P05
	D	P05	P05
	C	P05	P05
	B	P05	P05
A	P05	P05	
70430-x44 SEE NOTE 4 FOR LEAD-FREE CODE	E	P03	P03
	D	P02	P02
	C	P16	P16
	B	-	-
A	P03	-	
70430-x45 SEE NOTE 4 FOR LEAD-FREE CODE	E	P02	P01
	D	P03	P03
	C	-	-
	B	P03	P03
A	P03	P03	
70430-x46 SEE NOTE 4 FOR LEAD-FREE CODE	E	P03	P01
	D	P01	P03
	C	P01	P03
	B	P01	P03
A	P03	P01	
70430-x47 SEE NOTE 4 FOR LEAD-FREE CODE	E	P01	P03
	D	P03	P01
	C	P01	P03
	B	P03	P01
A	P01	P03	
70430-x48 SEE NOTE 4 FOR LEAD-FREE CODE	E	P01	P03
	D	P03	P02
	C	P01	P03
	B	P01	P02
A	P01	P02	
70430-x49 SEE NOTE 4 FOR LEAD-FREE CODE	E	P02	P01
	D	P02	P01
	C	P02	P01
	B	P02	P02
A	P02	P02	
70430-x50 SEE NOTE 4 FOR LEAD-FREE CODE	E	P02	P02
	D	P02	P02
	C	P01	P02
	B	P01	P02
A	P01	P02	
70430-x51 SEE NOTE 4 FOR LEAD-FREE CODE	E	P02	P01
	D	P03	P03
	C	-	-
	B	P01	P01
A	P03	P03	
70430-x52 SEE NOTE 4 FOR LEAD-FREE CODE	E	P11	P06
	D	P11	P06
	C	P11	P06
	B	P11	P06
A	P11	P06	
70430-x53 SEE NOTE 4 FOR LEAD-FREE CODE	E	P05	P06
	D	P12	P06
	C	P12	P06
	B	P12	P06
A	P12	P06	
70430-x54 SEE NOTE 4 FOR LEAD-FREE CODE	E	P05	P06
	D	P11	P06
	C	P11	P06
	B	P11	P06
A	P11	P06	
70430-x55 SEE NOTE 4 FOR LEAD-FREE CODE	E	P05	P06
	D	P29	P06
	C	P29	P06
	B	P29	P06
A	P29	P06	
70430-x56 SEE NOTE 4 FOR LEAD-FREE CODE	E	P01	P01
	D	P01	P01
	C	P01	P05
	B	P09	P09
A	P09	P09	
70430-x57 SEE NOTE 4 FOR LEAD-FREE CODE	E	P016	P01
	D	P016	P01
	C	P016	P01
	B	P016	P01
A	P016	P01	
70430-x58 SEE NOTE 4 FOR LEAD-FREE CODE	E	P01	P02
	D	P01	P02
	C	P01	P02
	B	P01	P16
A	P01	P02	
70430-x59 SEE NOTE 4 FOR LEAD-FREE CODE	E	P17	P17
	D	P17	P17
	C	P17	P17
	B	P17	P01
A	P17	P01	
70430-x60 SEE NOTE 4 FOR LEAD-FREE CODE	E	P07	P08
	D	P07	P08
	C	P07	P08
	B	P07	P08
A	P07	P08	

mat'l code		--		tolerances unless otherwise specified		CUSTOMER		www.fciconnect.com	
ltr	ecm no.	dr	date	linear	0.X ±0.3	projection	title	METRAL POWER HEADER	
AU				angles	0.XX ±0.13		I MOD, 5 ROW PRESS-FIT		
				dr	.XX ±.051		product family	METRAL	
				eng	0" ±.2"	scale	size	dwg no	213
				chr	I.BRINGARD 01/26/00	1:1	A	70430	sheet
				appd	M.STRAMSER 01/26/00				5
sheet index	revision sheet								

REV: 200-01-0

1 | 2 | 3 | 4 | cage code 22526



This document is the property of, and embodies CONFIDENTIAL and PROPRIETARY information of FCJ. No part of the information shown on this document may be used in any way or disclosed to others without the written consent of FCJ. Copyright FCJ.

METRAL P/N	ROW	CONTACT CODE MOD.	
		1	2
70430-X61 SEE NOTE 4 FOR LEAD-FREE CODE	E	P01	P01
	D	P01	P01
	C	P01	P01
	B	P01	P01
	A	-	-



mat'l code				tolerances unless otherwise specified		CUSTOMER		www.fcjconnect.com	
itr	ecm no.	dr	date	linear	0.X ±0.3	projection	COPY		
AU					0.XX ±0.13		title		
				angles	.XXX ±.051		METRAL POWER HEADER		
					0° ±2°		I MOD, 5 ROW PRESS-FIT		
				dr	I.BRINGARD 01/26/00		product family	METRAL	
				eng	M.STRAWSER 01/26/00		size	dwg no	213
				chr	M.STRAWSER 01/26/00		scale	70430	sheet
				appd	M.STRAWSER 02/29/00	1:1	A	6	
sheet index	revision sheet								

cage code 22526

Pro/E

PDM: Rev:AU

STATUS: Released

Printed: Jan 06, 2010