

MOLEX IRELAND PRODUCTION ONLY (OPTION)

RECOMMENDED PCB HOLE LAYOUT

NOTES:

1. PIN PUSH-OUT FORCE (.9072KG)/2LBS MIN.
2. PIN SOLDERABILITY PER MOLEX SPEC. ES-152.
3. PRODUCT SPEC: PS-70246 APPLIES.
4. WAFER TO BE FLAT WITHIN .003 MM/MM.
5. DIMENSIONS FOR PLATING LOCATION:
 - △A MEASURE POINT FOR THICKNESS
 - △B MINIMUM COVERAGE
 - △6 GOLD END OF PIN UNLESS OVERALL PLATED.

- 573 : 20 MICRO INCHES MIN GOLD PLATE ON CONTACT AND 100 MICRO INCHES MIN TIN PLATE ON SOLDER TAIL BOTH OVER 50 MICRO INCHES MIN NICKEL OVERALL.
- 573A : 20 MICRO INCHES MIN GOLD PLATE ON CONTACT AND 100 MICRO INCHES MIN TIN/LEAD PLATE ON SOLDER TAIL BOTH OVER 50 MICRO INCHES MIN NICKEL OVERALL.

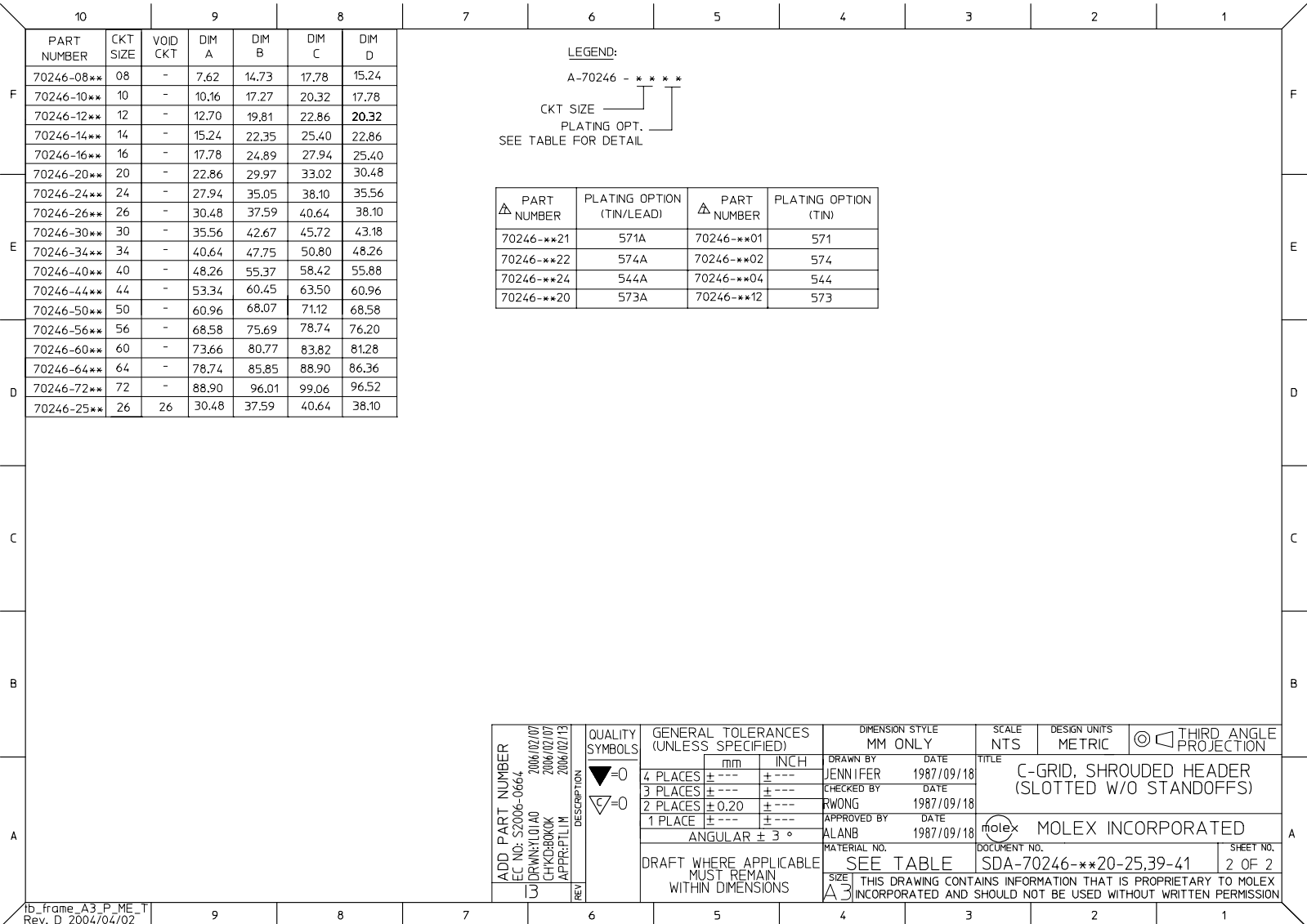
FINISH:

- 571 : 15 MICRO INCHES MIN GOLD PLATE ON CONTACT AND 75 MICRO INCHES MIN TIN PLATE ON SOLDER TAIL BOTH OVER 50 MICRO INCHES MIN NICKEL OVERALL.
- 571A: 15 MICRO INCHES MIN GOLD PLATE ON CONTACT AND 75 MICRO INCHES MIN TIN/LEAD PLATE ON SOLDER TAIL BOTH OVER 50 MICRO INCHES MIN NICKEL OVERALL.
- 574 : 30 MICRO INCHES MIN GOLD PLATE ON CONTACT AND 75 MICRO INCHES MIN TIN PLATE ON SOLDER TAIL BOTH OVER 50 MICRO INCHES MIN NICKEL OVERALL.
- 574A: 30 MICRO INCHES MIN GOLD PLATE ON CONTACT AND 75 MICRO INCHES MIN TIN/LEAD PLATE ON SOLDER TAIL BOTH OVER 50 MICRO INCHES MIN NICKEL OVERALL.
- 544 : 5 MICRO INCHES MIN GOLD PLATE ON CONTACT AND 75 MICRO INCHES MIN TIN PLATE ON SOLDER TAIL BOTH OVER 50 MICRO INCHES MIN NICKEL OVERALL.
- 544A: 5 MICRO INCHES MIN GOLD PLATE ON CONTACT AND 75 MICRO INCHES MIN TIN/LEAD PLATE ON SOLDER TAIL BOTH OVER 50 MICRO INCHES MIN NICKEL OVERALL.

△8 DIM AT THE CENTRE OF THE SHROUDED WALL SHALL BE 5.91MM MIN. THIS SPEC IS VALID FOR ALL CKT SIZE.

9. MATERIAL:
HSG: PBT, UL94V-0, COLOUR BLACK
PIN: 0.64MM SQ. PIN PHOSPHOR BRONZE.

UPDATE REVISION EC NO. S2006-0664 DRAWN BY: J1A0 CHECKED BY: CHICK/BROCK APPROVED BY: JPL/IN 2006/02/07 2006/02/07 2006/02/13	QUALITY SYMBOLS ▽=0 ▽=0	GENERAL TOLERANCES (UNLESS SPECIFIED)		DIMENSION STYLE MM ONLY		SCALE NTS	DESIGN UNITS METRIC	THIRD ANGLE PROJECTION
		4 PLACES ± --- ± --- 3 PLACES ± --- ± --- 2 PLACES ± 0.20 ± --- 1 PLACE ± --- ± --- ANGULAR ± 3 °	mm INCH	DRAWN BY JENNIFER 1987/09/18	DATE 1987/09/18	TITLE C-GRID, SHROUDED HEADER (SLOTTED W/O STANDOFFS)		
J3 REV	DESCRIPTION	DRAFT WHERE APPLICABLE MUST REMAIN WITHIN DIMENSIONS		MATERIAL NO. SEE TABLE		DOCUMENT NO. SDA-70246-**-20-25,39-41		SHEET NO. 1 OF 2
		SIZE A3 THIS DRAWING CONTAINS INFORMATION THAT IS PROPRIETARY TO MOLEX INCORPORATED AND SHOULD NOT BE USED WITHOUT WRITTEN PERMISSION						



PART NUMBER	CKT SIZE	VOID CKT	DIM A	DIM B	DIM C	DIM D
70246-08**	08	-	7.62	14.73	17.78	15.24
70246-10**	10	-	10.16	17.27	20.32	17.78
70246-12**	12	-	12.70	19.81	22.86	20.32
70246-14**	14	-	15.24	22.35	25.40	22.86
70246-16**	16	-	17.78	24.89	27.94	25.40
70246-20**	20	-	22.86	29.97	33.02	30.48
70246-24**	24	-	27.94	35.05	38.10	35.56
70246-26**	26	-	30.48	37.59	40.64	38.10
70246-30**	30	-	35.56	42.67	45.72	43.18
70246-34**	34	-	40.64	47.75	50.80	48.26
70246-40**	40	-	48.26	55.37	58.42	55.88
70246-44**	44	-	53.34	60.45	63.50	60.96
70246-50**	50	-	60.96	68.07	71.12	68.58
70246-56**	56	-	68.58	75.69	78.74	76.20
70246-60**	60	-	73.66	80.77	83.82	81.28
70246-64**	64	-	78.74	85.85	88.90	86.36
70246-72**	72	-	88.90	96.01	99.06	96.52
70246-25**	26	26	30.48	37.59	40.64	38.10

LEGEND:
 A-70246 - * * * *
 CKT SIZE
 PLATING OPT.
 SEE TABLE FOR DETAIL

△ PART NUMBER	PLATING OPTION (TIN/LEAD)	△ PART NUMBER	PLATING OPTION (TIN)
70246-**21	571A	70246-**01	571
70246-**22	574A	70246-**02	574
70246-**24	544A	70246-**04	544
70246-**20	573A	70246-**12	573

ADD PART NUMBER EC NO. S2006-0664 DRAWN BY LOI AO CHECKED BY CHIKO BOKK APPROVED BY PTLIM 2006/02/07 2006/02/07 2006/02/13	QUALITY SYMBOLS	GENERAL TOLERANCES (UNLESS SPECIFIED) 4 PLACES ± --- ± --- 3 PLACES ± --- ± --- 2 PLACES ± 0.20 ± --- 1 PLACE ± --- ± --- ANGULAR ± 3 °	DIMENSION STYLE MM ONLY	SCALE NTS	DESIGN UNITS METRIC	THIRD ANGLE PROJECTION	
	▽=0		DRAWN BY JENNIFER	DATE 1987/09/18	TITLE C-GRID, SHROUDED HEADER (SLOTTED W/O STANDOFFS)		
	▽=0	DRAFT WHERE APPLICABLE MUST REMAIN WITHIN DIMENSIONS	CHECKED BY RWONG	DATE 1987/09/18	APPROVED BY ALANB	DATE 1987/09/18	MOLEX MOLEX INCORPORATED
	REV		MATERIAL NO.	SEE TABLE	DOCUMENT NO.	SDA-70246-**20-25.39-41	SHEET NO. 2 OF 2

THIS DRAWING CONTAINS INFORMATION THAT IS PROPRIETARY TO MOLEX INCORPORATED AND SHOULD NOT BE USED WITHOUT WRITTEN PERMISSION