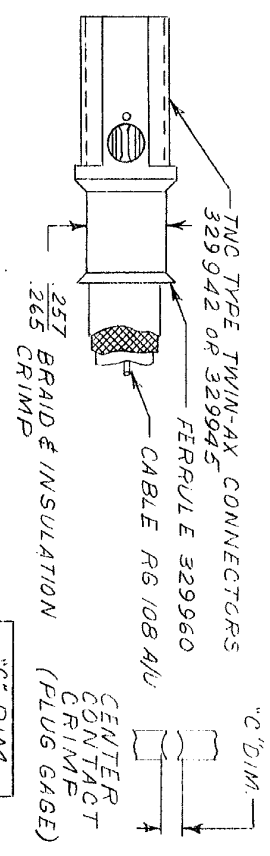
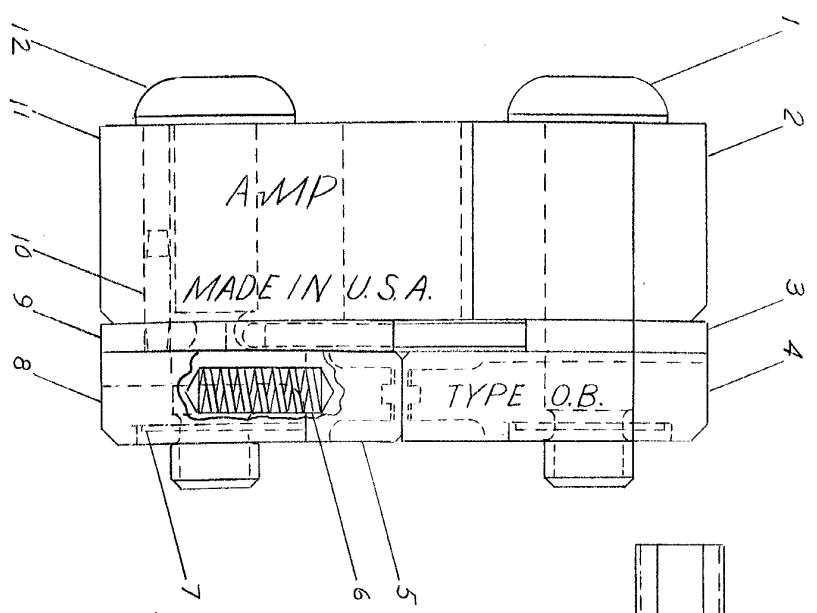
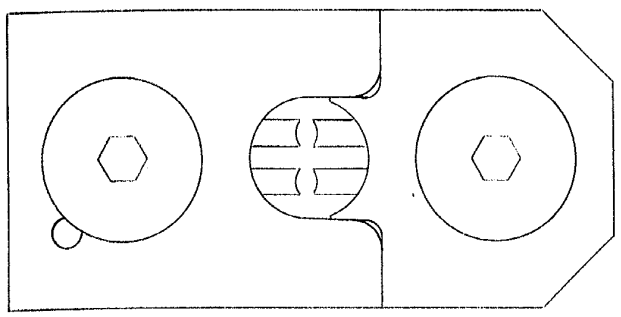


PRINT DIST
 7
 5

DIMENSIONS IN INCHES. DO NOT SCALE PRINT



METHOD OF CRIMPING
 CRIMP DIMENSIONS
 THE CRIMP DIMENSIONS APPLY ONLY TO THE ABOVE COMBINATIONS ON A CRIMPED PRODUCT

"C" DIM.	GO	NO GO
	.040	.044

SUPERSEDED BY U.S. 1933-3

1	4-306131-4	SCREW-SPECIAL	12
1	1-306540-8	INSERT-INSULATION	11
1	21028-2	PIN-SLOTTED	10
1	9-305832-8	SPACER-SPECIAL	9
1	306543-3	BARREL-BLOCK	8
2	1-21046-3	RING-RETAINING	7
2	305182	SPRING	6
1	306545	INSERT-BARREL-LOWER	5
1	306201	INSERT-BARREL-UPPER	4
1	2-306113-3	EJECTOR	3
1	1-306539-8	ANVIL-INSULATION	2
1	4-306131-3	SCREW-SPECIAL	1

REMARKS		CUSTOMER COPY REFERENCE ONLY	
DR	AMP INCORPORATED HARRISBURG, PENN.	DR	AMP INCORPORATED HARRISBURG, PENN.
CHK	AMP PRODUCTS COVERED BY PATENTS AND/OR PATENTS PENDING.	CHK	AMP PRODUCTS COVERED BY PATENTS AND/OR PATENTS PENDING.
DATE	11-10-65	DATE	11-10-65
NAME	W. H. H. H. H.	NAME	W. H. H. H. H.
CLASS	O.B. TWIN COAX	CLASS	O.B. TWIN COAX
TYPE	M	TYPE	M
LOC	B	LOC	B
NO	69410-1	NO	69410-1
REV	A	REV	A
DIE ASSEMBLY		DIE ASSEMBLY	
WIRE RANGE - INSULATION		WIRE RANGE - INSULATION	
TOLERANCE EXCEPT SCALE		TOLERANCE EXCEPT SCALE	
AS NOTED ± 1°		AS NOTED ± 1°	
MATERIAL AND FINISH		MATERIAL AND FINISH	
REQUIRED PER ASSEMBLY		REQUIRED PER ASSEMBLY	
DESCRIPTION		DESCRIPTION	
NUMBER		NUMBER	
69410-1		69410-1	
TRN	REVISION RECORD	TRN	REVISION RECORD
DR	CHK DATE	DR	CHK DATE
5		5	
6		6	

7 6 5 4 3 2 1