

1

2

3

4

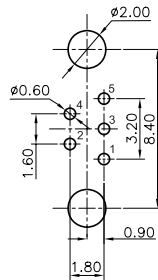
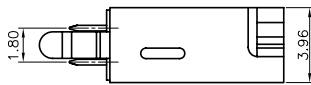
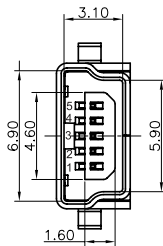
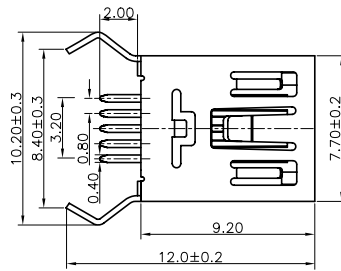
5

A

B

C

D



PCB LAYOUT
COMPONENT VIEW

TECHNICAL CHARACTERISTICS

MATERIAL
INSULATOR: PBT
FLAMABILITY RATING: UL94-V0
COLOR: BLACK
CONTACT MATERIAL: COPPER ALLOYS
CONTACT TYPE: STAMPED
CONTACT PLATING: SELECTIVE GOLD
SHIELDING: BRASS WITH NI PLATING
QUALITY CLASS: 1500 MATING CYCLES

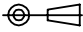

ENVIRONMENTAL
OPERATING TEMPERATURE: -40 UP TO 105°C
COMPLIANCE: LEAD FREE AND ROHS

ELECTRICAL
CURRENT RATING: 1A MAX
WORKING VOLTAGE: 30V AC
INSULATOR RESISTANCE: >1000 MOHM
DIELECTRIC WITHSTANDING VOLTAGE: 750V AC/MN
CONTACT RESISTANCE: 20 mOHM MAX

SOLDERING
WAVE PROCESS ONLY

PACKAGING
TRAY

RoHS Compliant

G				PROJECTION: 	GENERAL TOLERANCE .X = +/_ 0.2 .XX = +/_ 0.15		DESCRIPTION: VERTICAL MINI USB TYPE B 5 CONTACTS	SIZE A4
F	25-JUN-09	LAYOUT PINNING	CH					
E	25-FEB-09	PCB LAYOUT	JP					
D	27-NOV-08	PINNING	JP					
C	05-DEC-07	MODIFICATIONS	CH					
B	24-MAY-07	PDF	JP	APPROVAL: RJ	UNIT: MM	WERI PART NO: 651005136421		
A	25-APR-06	DRAW	W		SCALE:			
REV	DATE	FILE	BY		SHEET: 1/1 DRAW: WENDY			