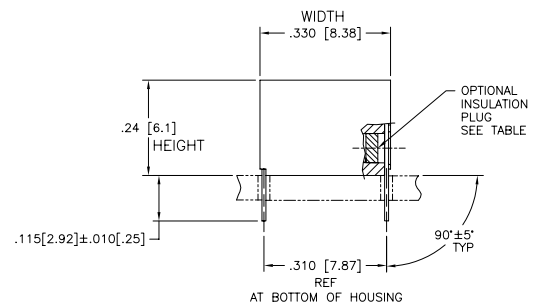
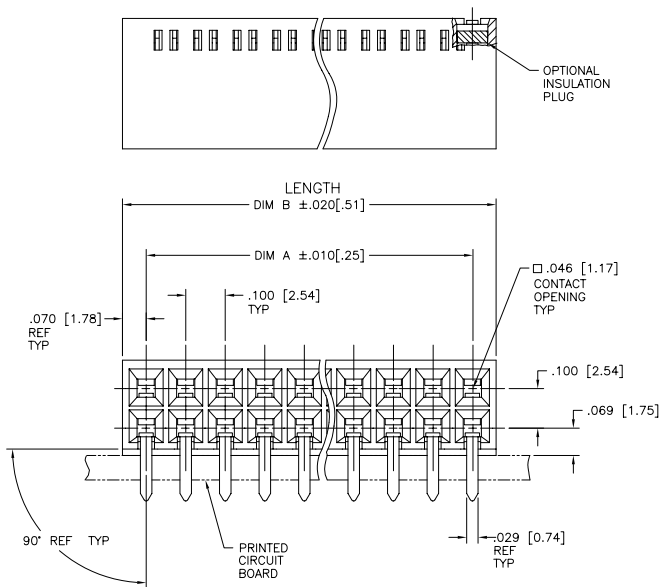


PRODUCT NUMBER  
SEE TABLE



mat'l. code		surface	tolerance	projection	product family
		ISO 1302	ISO 406	1st angle	CARD CONN.
			ISO 1101		
ltr	ecn no	dr	date	title	
AR	V32114	MSC	6/8/94	BERGCON HORIZ. CARD CONN	
AS	V41413	MRC	9/30/94	DOUBLE ROW .100/2.54 cc	
AT	V61611	MDF	10/29/96	scale 1:1	
AU	V70992	JM	10/12/97	dr	M.CLOUSER 6/7/94
AV	V02523	AZ	10/20/00	enrg	H.SUNDY 6/7/94
AW	M05-0181	ERE	09/05/05	chr	H.SUNDY 6/7/94
AX	M06-0319	MHT	8/21/06	appd	H.SUNDY 6/7/94
sheet	revision	AX	AX	AX	AX
index	sheet	1	2	3	4

PRODUCT NUMBER  
SEE TABLE

NOTES:

1. HOUSING MATERIAL: (SEE TABLE)  
FILLED HIGH TEMPERATURE NYLON, COLOR BLACK
2. TERMINAL MATERIAL:  
BODY-BRASS, .010/.25 THICK  
SPRING- Be-Cu, HEAT TREATED  
BODY PLATING- SEE TABLE FOR Au PLATING THICKNESS  
OVER 50u"/1.27u" NI IN CONTACT AREA.  
SPRING PLATING:- Au FLASH  
LEAD FREE BODY PLATING: 2.54u"/100u" Sn
3. MARKING: "FCJ" PART NUMBER AND DATE CODE  
LEGIBLE ON TUBE LABEL.
4. APPLICATION INFORMATION:  
A. RECOMMENDED MOUNTING HOLE PATTERN IS SHOWN  
IN FIGURE 1.  
B. ALL MATING PINS TO BE .025/.64 SQ. ON TRUE  
CENTER OF GIVEN TERMINAL SPACINGS WITHIN  
.015/.38 DIA.  
C. SUGGESTED MATING PIN LENGTH .350[8.89]±.020[.51].
5. ADD "LF" SUFFIX AT THE END OF PART NUMBER  
FOR LEAD FREE OPTION.
6. THESE PRODUCTS MEET EUROPEAN UNION DIRECTIVES  
AND OTHER COUNTRY REGULATIONS AS DESCRIBED IN  
GS-22-008.
7. THIS PART WILL WITHSTAND EXPOSURE TO 260°C PEAK  
TEMPERATURE FOR 20 SECONDS IN A WAVE SOLDER,  
INFRA-RED OR VAPOR PHASE  
SOLDER PROCESS.
8. "THIS PRODUCT HAS 100% TIN PLATING IN THE INTERFACE  
AND HAS NOT BEEN TESTED FOR WHISKER GROWTH IN ALL  
INTERCONNECT ENVIRONMENTS."

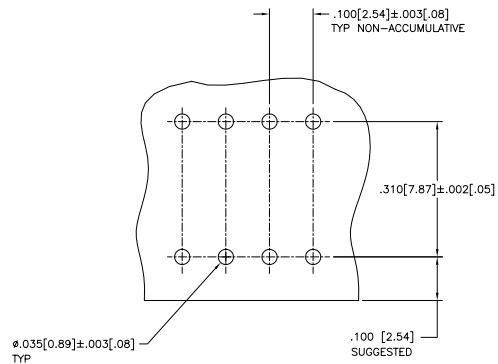


FIGURE 1  
SCALE 10/1

mat'l. code		surface	tolerance	projection	product family
ISO 1302		ISO 1302	ISO 406		CARD CONN.
ISO 1101		ISO 1101	ISO 1101		
ltr	ecn no	dr	date	title	
AX				BERGCON HORIZ. CARD CONN	
tolerances unless otherwise specified angles linear .XX±.01/3 0°±2' .XXX±.005/13 .XXXX±.0020/.051				INCH/MM	DOUBLE ROW .100/2.54 cc
				scale 1:1	dwg no sheet 2 of 11 size
					65000 A3
					type Product Customer Drawing
sheet	revision				
index	sheet				

PRODUCT NUMBER	HOUSING MATERIAL	NO. OF POS	DIM A	DIM B	SPRING THICKNESS	BODY PLATING THICKNESS	SPECIAL MARKINGS AND MISCELLANEOUS	CUSTOMER RESTRICTED	LEAD FREE OPTION
65000-001	HT NYLON	2X8	.700/17.78	.840/21.34	.0035/.089	40u"/1.02u Au			NOTE 5, 6
-002		2X8	.700/17.78	.840/21.34					
-003		2X9	.800/20.32	.940/23.88					
-004		2X9	.800/20.32	.940/23.88					
-005		2X10	.900/22.86	1.040/26.42					
-006		2X10	.900/22.86	1.040/26.42					
-007		2X11	1.000/25.40	1.140/28.96					
-008		2X11	1.000/25.40	1.140/28.96					
-009		2X12	1.100/27.94	1.240/31.50					
-010		2X12	1.100/27.94	1.240/31.50					
-011		2X13	1.200/30.48	1.340/34.04					
-012		2X13	1.200/30.48	1.340/34.04					
-013		2X14	1.300/33.02	1.440/36.58					
-014		2X14	1.300/33.02	1.440/36.58					
-015		2X15	1.400/35.56	1.540/39.12					
-016		2X15	1.400/35.56	1.540/39.12					
-017		2X16	1.500/38.10	1.640/41.66					
-018		2X16	1.500/38.10	1.640/41.66					
-019		2X17	1.600/40.64	1.740/44.20					
-020		2X17	1.600/40.64	1.740/44.20					
-021		2X18	1.700/43.18	1.840/46.74					
-022		2X18	1.700/43.18	1.840/46.74					
-023		2X19	1.800/45.72	1.940/49.28					
-024		2X19	1.800/45.72	1.940/49.28					
-025		2X20	1.900/48.26	2.040/51.82					
-026		2X20	1.900/48.26	2.040/51.82					
-027		2X21	2.000/50.80	2.140/54.36					
-028		2X21	2.000/50.80	2.140/54.36					
-029		2X22	2.100/53.34	2.240/56.90					
-030		2X22	2.100/53.34	2.240/56.90					
-031		2X23	2.200/55.68	2.340/59.44					
-032		2X23	2.200/55.68	2.340/59.44					
-033		2X24	2.300/58.42	2.440/61.98					
-034		2X24	2.300/58.42	2.440/61.98					
-035		2X25	2.400/60.96	2.540/64.52					
65000-036	HT NYLON	2X25	2.400/60.96	2.540/64.52	.0035/.089	40u"/1.02u Au			NOTE 5, 6

FCI  
FCIconnect.com  
Copyright FCI

mat'l. code	surface ISO 1302	tolerance ISO 406 ISO 1101	projection	product family
ltr ecn no dr date	tolerances unless otherwise specified	angles linear	INCH/MM	CARD CONN.
AX	0°±2'	dr	scale 1:1	title
	enrg	chr		BERGCON HORIZ. CARD CONN
	appd			DOUBLE ROW .100/2.54 cc
				dwg no 65000 sheet 3 of 11 size A3
				type Product Customer Drawing
sheet index	revision sheet			

PRODUCT NUMBER	HOUSING MATERIAL	NO. OF POS	DIM A	DIM B	SPRING THICKNESS	BODY PLATING THICKNESS	SPECIAL MARKINGS AND MISCELLANEOUS	CUSTOMER RESTRICTED	LEAD FREE OPTION
65000-037	HT NYLON	2X 26	2.500/63.50	2.640/67.06	.0035/.089	40u"/1.02u Au			NOTE 5, 6
-038		2X 26	2.500/63.50	2.640/67.06					
-039		2X 27	2.600/66.04	2.740/69.60					
-040		2X 27	2.600/66.04	2.740/69.60					
-041		2X 28	2.700/68.58	2.840/72.14					
-042		2X 28	2.700/68.58	2.840/72.14					
-043		2X 29	2.800/71.12	2.940/74.68					
-044		2X 29	2.800/71.12	2.940/74.68					
-045		2X 30	2.900/73.66	3.040/77.22					
-046		2X 30	2.900/73.66	3.040/77.22					
-047		2X 31	3.000/76.20	3.140/79.76					
-048		2X 31	3.000/76.20	3.140/79.76					
-049		2X 32	3.100/78.74	3.240/82.30					
-050		2X 32	3.100/78.74	3.240/82.30					
-051		2X 33	3.200/81.28	3.340/84.84					
-052		2X 33	3.200/81.28	3.340/84.84					
-053		2X 34	3.300/83.82	3.440/87.38					
-054		2X 34	3.300/83.82	3.440/87.38					
-055		2X 35	3.400/86.36	3.540/89.92					
-056		2X 35	3.400/86.36	3.540/89.92					
-057		2X 36	3.500/88.90	3.640/92.46					
-058		2X 36	3.500/88.90	3.640/92.46					
-059		2X 37	3.600/91.44	3.740/95.00					
-060		2X 37	3.600/91.44	3.740/95.00					
-061		2X 38	3.700/93.98	3.840/97.54					
-062		2X 38	3.700/93.98	3.840/97.54					
-063		2X 39	3.800/96.52	3.940/100.08					
-064		2X 39	3.800/96.52	3.940/100.08					
-065		2X 40	3.900/99.06	4.040/102.62					
-066		2X 40	3.900/99.06	4.040/102.62					
-067		2X 41	4.000/101.60	4.140/105.16					
-068		2X 41	4.000/101.60	4.140/105.16					
-069		2X 42	4.100/104.14	4.240/107.70					
-070		2X 42	4.100/104.14	4.240/107.70					
-071		2X 43	4.200/106.68	4.340/110.24					
65000-072	HT NYLON	2X 43	4.200/106.68	4.340/110.24	.0035/.089	40u"/1.02u Au			NOTE 5, 6

mat'l. code	surface	tolerance	projection	product family
ISO 1302	ISO 1302	ISO 406	ISO 1101	CARD CONN.
ISO 1101	tolerances unless otherwise specified	XXX:01/3	INCH/MM	title
AX	angles	.XXX±.005/.13	scale 1:1	BERGCON HORIZ. CARD CONN
	linear	XXXX±.0020/.051	FCJ	DOUBLE ROW .100/2.54 cc
	dr	M.CLOUSER 6/7/94		dwg no
	enrg	H.SUNDY 6/7/94		65000
	chr	H.SUNDY 6/7/94		sheet 4 of 11 size
	appd	H.SUNDY 6/7/94		A3
sheet index	revision sheet			type Product Customer Drawing

PRODUCT NUMBER	HOUSING MATERIAL	NO. OF POS	DIM A	DIM B	SPRING THICKNESS	BODY PLATING THICKNESS	SPECIAL MARKINGS AND MISCELLANEOUS	CUSTOMER RESTRICTED	LEAD FREE OPTION
65000-073	HT NYLON	2X44	4.300/109.22	4.440/112.78	.0035/.089	40u"/1.02u Au			NOTE 5, 6
-074		2X44	4.300/109.22	4.440/112.78					
-075		2X45	4.400/111.76	4.540/115.31					
-076		2X45	4.400/111.76	4.540/115.31					
-077		2X46	4.500/114.30	4.640/117.86					
-078		2X46	4.500/114.30	4.640/117.86					
-079		2X47	4.600/116.84	4.740/120.40					
-080		2X47	4.600/116.84	4.740/120.40					
-081		2X48	4.700/119.38	4.840/122.94					
-082		2X48	4.700/119.38	4.840/122.94					
-083		2X49	4.800/121.92	4.940/125.48					
-084		2X49	4.800/121.92	4.940/125.48					
-085		2X50	4.900/124.46	5.040/128.02					
-086		2X50	4.900/124.46	5.040/128.02					
-087		2X51	5.000/127.00	5.140/130.56					
-088		2X51	5.000/127.00	5.140/130.56					
-089		2X52	5.100/129.54	5.240/133.10					
-090		2X52	5.100/129.54	5.240/133.10					
-091		2X53	5.200/132.08	5.340/135.64					
-092		2X53	5.200/132.08	5.340/135.64					
-093		2X54	5.300/134.62	5.440/138.18					
-094		2X54	5.300/134.62	5.440/138.18					
-095		2X55	5.400/137.16	5.540/140.72					
-096		2X55	5.400/137.16	5.540/140.72		40u"/1.02u Au			
-097		2X14	1.300/33.02	1.440/36.58		50u"/1.27u Au			
-098		2X14	1.300/33.02	1.440/36.58					
-099		2X29	2.800/71.12	2.940/74.68					
-100		2X29	2.800/71.12	2.940/74.68					
-101		2X26	2.500/63.50	2.640/67.06					
-102		2X26	2.500/63.50	2.640/67.06		50u"/1.27u Au			
-103		2X7	.600/15.24	.740/18.80		40u"/1.02u Au			
-104	HT NYLON	2X30	2.900/73.66	3.040/77.22	.0035/.089	50u"/1.27u Au			
-105	REPLACED BY -212								
-106	REPLACED BY -213								
-107	HT NYLON	2X8	.700/17.78	.840/21.34	.0035/.089	50u"/1.27u Au			
65000-108	HT NYLON	2X15	1.400/33.56	1.540/39.12	.0035/.089	50u"/1.27u Au			NOTE 5, 6

mat'l. code	surface	tolerance	projection	product family
ISO 1302	ISO 406	ISO 1101	product family	CARD CONN.
tr	ecn	no	dr	date
AX				
tolerances unless otherwise specified		xxx:01/3	INCH/MM	title
angles	linear	.xxx±.005/.13	scale 1:1	BERGCON HORIZ. CARD CONN
0°±2'		xxxx±.0020/.051	FCJ	DOUBLE ROW .100/2.54 cc
dr	M.CLOUSER	6/7/94		dwg no
enrg	H.SUNDY	6/7/94		65000
chr	H.SUNDY	6/7/94		sheet 5 of 11 size
appd	H.SUNDY	6/7/94		A3
sheet index	revision sheet			type Product Customer Drawing

PRODUCT NUMBER	HOUSING MATERIAL	NO. OF POS	DIM A	DIM B	SPRING THICKNESS	BODY PLATING THICKNESS	SPECIAL MARKINGS AND MISCELLANEOUS	CUSTOMER RESTRICTED	LEAD FREE OPTION
65000-109	HT NYLON	2X20	1.900/48.26	2.040/51.82	.0035/.089	50u"1.27u Au			NOTE 5, 6
-110		2X24	2.300/58.42	2.440/61.98	.0035/.089	50u"1.27u Au			
-111			OBSOLETE						
-112		2X4	.300/7.62	.440/11.18	.0035/.089	50u"1.27u Au			
-113		2X8	.700/17.78	.840/21.34	.0048/.122	40u"/1.02u Au			
-114		2X5	.400/10.16	.540/13.72	.0035/.089				
-115		2X5	.400/10.16	.540/13.72					
-116		2X6	.500/12.70	.640/16.26					
-117		2X6	.500/12.70	.640/16.26					
-118		2X7	.600/15.24	.740/18.80					
-119		2X1	.000/.00	.140/3.56		40u"/1.02u Au			
-120		2X4	.300/7.62	.440/11.18		50u"1.27u Au			
-121		2X6	.500/12.70	.640/16.26					
-122		2X8	.700/17.78	.840/21.34					
-123		2X10	.900/22.86	1.040/26.42					
-124		2X12	1.100/27.94	1.240/31.50					
-125		2X14	1.300/33.02	1.440/36.56		50u"1.27u Au			
-126		2X1	.000/.00	.140/3.56		40u"/1.02u Au			
-127		2X2	.100/2.54	.240/6.10					
-128		2X2	.100/2.54	.240/6.10					
-129		2X3	.200/5.08	.340/8.64					
-130		2X3	.200/5.08	.340/8.64					
-131		2X4	.300/7.62	.440/11.18					
-132		2X4	.300/7.62	.440/11.18	.0035/.089				
-133		2X8	.700/17.78	.840/21.34	.0048/.122				
-134		2X65	6.400/162.56	6.540/166.12	.0035/.089				
-135		2X65	6.400/162.56	6.540/166.12	.0035/.089				
-136		2X45	4.400/111.76	4.540/115.32	.0048/.122				
-137		2X48	4.700/119.38	4.840/122.94	.0048/.122				
-138		2X56	5.500/139.70	5.640/143.56	.0035/.089				
-139		2X56	5.500/139.70	5.640/143.56					
-140		2X57	5.600/142.24	5.740/145.80					
-141		2X57	5.600/142.24	5.740/145.80					
-142		2X58	5.700/144.78	5.840/148.34					
-143		2X58	5.700/144.78	5.840/148.34					
65000-144	HT NYLON	2X59	6.800/147.32	6.940/150.88	.0035/.089	40u"/1.02u Au			NOTE 5, 6

mat'l. code	surface	tolerance	projection	product family
ISO 1302	ISO 1302	ISO 406	ISO 1101	CARD CONN.
ISO 1101	tolerances unless otherwise specified	XXX:01/3	INCH/MM	title
angles	linear	.XXX±.005/.13	scale 1:1	BERGCON HORIZ. CARD CONN
0°±2'		XXXX±.0020/.051		DOUBLE ROW .100/2.54 cc
dr	M.CLOUSER	6/7/94	FCJ	dwg no
enrg	H.SUNDY	6/7/94		65000
chr	H.SUNDY	6/7/94		sheet 6 of 11 size
appd	H.SUNDY	6/7/94		A3
sheet index	revision sheet			type Product Customer Drawing

PRODUCT NUMBER	HOUSING MATERIAL	NO. OF POS	DIM A	DIM B	SPRING THICKNESS	BODY PLATING THICKNESS	SPECIAL MARKINGS AND MISCELLANEOUS	CUSTOMER RESTRICTED	LEAD FREE OPTION
65000-145	HT NYLON	2X59	6.800/147.32	5.940/150.88	.0035/.089	40u"/1.02u Au			NOTE 5, 6
-146		2X60	5.900/149.86	6.040/153.52					
-147		2X60	5.900/149.86	6.040/153.52					
-148		2X61	6.000/152.40	6.140/155.96					
-149		2X61	6.000/152.40	6.140/155.96					
-150		2X62	6.100/154.94	6.240/158.40					
-151		2X62	6.100/154.94	6.240/158.40					
-152		2X63	6.200/157.48	6.340/161.04					
-153		2X63	6.200/157.48	6.340/161.04					
-154		2X64	6.300/160.02	6.440/163.58					
-155		2X64	6.300/160.02	6.440/163.58					
-156		2X23	2.200/55.88	2.320/58.93		40u"/1.02u Au			
-157		2X34	3.300/83.82	3.440/87.38	.0035/.089	50u"/1.27u Au			
-158		2X9	.800/20.32	.940/23.88	.0048/.122	40u"/1.02u Au			
-159		2X12	1.100/27.94	1.240/31.50	.0048/.122	40u"/1.02u Au			
-160			REPLACED BY 166						
-161			REPLACED BY 169						
-162			REPLACED BY 163						
-163		2X52	5.100/129.54	5.220/132.59	.0035/.089	40u"/1.02u Au		RESTRICTED	
-164		2X9	.900/20.32	.920/23.37					
-165		2X14	1.300/33.02	1.420/36.07					
-166		2X19	1.800/45.72	1.920/48.77					
-167		2X20	1.900/48.26	2.020/51.82					
-168		2X23	2.200/55.88	2.320/58.93					
-169		2X26	2.500/63.50	2.620/66.57					
-170		2X48	4.700/119.38	4.820/122.43					
-171		2X5	.400/10.16	.520/13.21					
-172		2X25	2.400/60.96	2.520/64.01					
-173		2X33	3.200/81.28	3.320/84.33					
-174		2X30	2.900/73.66	3.040/77.22					
-175		2X32	3.100/78.74	3.240/82.30		40u"/1.02u Au			
-176		2X45	4.400/111.76	4.540/115.32		40u"/1.02u Au		RESTRICTED	
-177		2X34	3.300/83.82	3.440/87.38		50u"/1.27u Au			
-178		2X20	1.900/48.26	2.040/51.82		50u"/1.27u Au			
-179		2X10	.900/22.86	1.040/26.42		50u"/1.27u Au			
65000-180	HT NYLON	2X40	3.900/99.06	4.040/102.62	.0035/.089	40u"/1.02u Au		RESTRICTED	NOTE 5, 6

mat'l. code	surface ISO 1302	tolerance ISO 406 ISO 1101	projection	product family
ltr ecn no dr date	tolerances unless otherwise specified	angles linear	INCH/MM	CARD CONN.
AX	0°±2'	dr M.CLOUSER 6/7/94	scale 1:1	title
	enrg H.SUNDY 6/7/94	chr H.SUNDY 6/7/94	FCJ	BERGCON HORIZ. CARD CONN
	appd H.SUNDY 6/7/94			DOUBLE ROW .100/2.54 cc
sheet index	revision sheet			dwg no 65000 sheet 7 of 11 size A3
				type Product Customer Drawing

PRODUCT NUMBER	HOUSING MATERIAL	NO. OF POS	DIM A	DIM B	SPRING THICKNESS	BODY PLATING THICKNESS	SPECIAL MARKINGS AND MISCELLANEOUS	CUSTOMER RESTRICTED	LEAD FREE OPTION
65000-181	HT NYLON	2X50	4.900/124.46	5.040/128.02	.0035/.089	40u*/1.02u Au		RESTRICTED	NOTE 5, 6
-182		2X14	2.000/50.80	2.140/54.36	.0035/.089	40u*/1.02u Au		RESTRICTED	
-183		2X50	4.900/124.46	5.040/128.02	.0030/.076	50u*/1.27u Au			
-184		2X44	4.300/109.22	4.440/112.78	.0035/.089	40u*/1.02u Au			
-185		2X6	.500/12.70	.640/16.26	.0035/.089	50u*/1.27u Au		RESTRICTED	
-186		2X22	2.100/53.34	2.240/56.90	.0035/.089	50u*/1.27u Au		RESTRICTED	
-187		2X10	.900/22.86	1.040/26.42	.0048/.122	100u*/2.54u TIN LEAD			
-201		2X1	.000/.00	.140/3.56	.0035/.089				
-202		2X2	.100/2.54	.240/6.10					
-203		2X3	.200/5.08	.340/8.64					
-204		2X4	.300/7.62	.440/11.18					
-205		2X5	.400/10.16	.540/13.72					
-206		2X6	.500/12.70	.640/16.26					
-207		2X7	.600/15.24	.740/18.80					
-208		2X8	.700/17.78	.840/21.34					
-209		2X9	.800/20.32	.940/23.88					
-210		2X10	.900/22.86	1.040/26.42					
-211		2X11	1.000/25.40	1.140/28.96					
-212		2X12	1.100/27.94	1.240/31.50					
-213		2X13	1.200/30.48	1.340/34.04					
-214		2X14	1.300/33.02	1.440/36.58					
-215		2X15	1.400/35.56	1.540/39.12					
-216		2X16	1.500/38.10	1.640/41.66					
-217		2X17	1.600/40.64	1.740/44.20					
-218		2X18	1.700/43.18	1.840/46.74					
-219		2X19	1.800/45.72	1.940/49.28					
-220		2X20	1.900/48.26	2.040/51.82					
-221		2X21	2.000/50.80	2.140/54.36					
-222		2X22	2.100/53.34	2.240/56.90					
-223		2X23	2.200/55.68	2.340/59.44					
-224		2X24	2.300/58.42	2.440/61.98					
-225		2X25	2.400/60.96	2.540/64.52					
-226		2X26	2.500/63.50	2.640/67.06					
-227		2X27	2.600/66.04	2.740/69.60					
-228		2X28	2.700/68.58	2.840/72.14					
65000-229	HT NYLON	2X29	2.800/71.12	2.940/74.68	.0035/.089	100u*/2.54u TIN LEAD			NOTE 5, 6

mat'l. code	surface	tolerance	projection	product family
ISO 1302	ISO 406	ISO 1101	INCH/MM	CARD CONN.
AX	linear	XXX±.01/3	scale 1:1	title
	angles	.XXX±.005/13		BERGCON HORIZ. CARD CONN
	0°±2'	XXXX±.0020/.051		DOUBLE ROW .100/2.54 cc
	dr	M.CLOUSER 6/7/94		dwg no
	enrg	H.SUNDY 6/7/94		65000
	chr	H.SUNDY 6/7/94		sheet 8 of 11 size
	appd	H.SUNDY 6/7/94		A3
sheet index	revision sheet			type Product Customer Drawing



PRODUCT NUMBER	HOUSING MATERIAL	NO. OF POS	DIM A	DIM B	SPRING THICKNESS	BODY PLATING THICKNESS	SPECIAL MARKINGS AND MISCELLANEOUS	CUSTOMER RESTRICTED	LEAD FREE OPTION
65000-230	HT NYLON	2X30	2.900/73.66	3.040/77.22	.0035/.089	100u"/2.54u TIN LEAD			NOTE 5, 6
-231		2X31	3.000/76.20	3.140/79.76					
-232		2X32	3.100/78.74	3.240/82.30					
-233		2X33	3.200/81.28	3.340/84.84					
-234		2X34	3.300/83.82	3.440/87.38					
-235		2X35	3.400/86.36	3.540/89.92					
-236		2X36	3.500/88.90	3.640/92.46					
-237		2X37	3.600/91.44	3.740/95.00					
-238		2X38	3.700/93.98	3.840/97.54					
-239		2X39	3.800/96.52	3.940/100.08					
-240		2X40	3.900/99.06	4.040/102.62					
-241		2X41	4.000/101.60	4.140/105.16					
-242		2X42	4.100/104.14	4.240/107.70					
-243		2X43	4.200/106.68	4.340/110.24					
-244		2X44	4.300/109.22	4.440/112.78					
-245		2X45	4.400/111.76	4.540/115.31					
-246		2X46	4.500/114.30	4.640/117.86					
-247		2X47	4.600/116.84	4.740/120.40					
-248		2X48	4.700/119.38	4.840/122.94					
-249		2X49	4.800/121.92	4.940/125.48					
-250		2X50	4.900/124.46	5.040/128.02					
-251		2X51	5.000/127.00	5.140/130.56					
-252		2X52	5.100/129.54	5.240/133.10					
-253		2X53	5.200/132.08	5.340/135.64					
-254		2X54	5.300/134.62	5.440/138.18					
-255		2X55	5.400/137.16	5.540/140.72					
-256		2X56	5.500/139.70	5.640/143.26					
-257		2X57	5.600/142.24	5.740/145.80					
-258		2X58	5.700/144.78	5.840/148.34					
-259		2X59	5.800/147.32	5.940/150.88					
-260		2X60	5.900/149.86	6.040/153.42					
-261		2X61	6.000/152.40	6.140/155.96					
-262		2X62	6.100/154.94	6.240/158.50					
-263		2X63	6.200/157.40	6.340/161.04					
-264		2X64	6.300/160.02	6.440/163.58					
65000-265	HT NYLON	2X65	6.400/162.56	6.540/166.12	.0035/.089	100u"/2.54u TIN LEAD			NOTE 5, 6

mat'l. code	surface	tolerance	projection	product family
ISO 1302	ISO 1302	ISO 406	ISO 1101	CARD CONN.
tolerances unless otherwise specified	angles	linear	INCH/MM	title
0°±2'		xxx:01/3	scale 1:1	BERGCON HORIZ. CARD CONN
dr	M.CLOUSER	6/7/94		DOUBLE ROW .100/2.54 cc
enrg	H.SUNDY	6/7/94		dwg no
chr	H.SUNDY	6/7/94		65000
appd	H.SUNDY	6/7/94		sheet 9 of 11 size
				A3
sheet index	revision sheet			type Product Customer Drawing

PRODUCT NUMBER	HOUSING MATERIAL	NO. OF POS	DIM A	DIM B	SPRING THICKNESS	BODY PLATING THICKNESS	SPECIAL MARKINGS AND MISCELLANEOUS	CUSTOMER RESTRICTED	LEAD FREE OPTION
65000-266	HT NYLON	2X30	2.900/73.66	3.040/77.22	.0030/.076	40u"/1.02u Au		RESTRICTED	NOTE 5, 6
-267		2X40	3.900/99.06	4.040/102.60	.0030/.076	40u"/1.02u Au		RESTRICTED	
-268		2X10	.900/22.86	1.040/26.42	.0035/.089	50u"/1.27u Au			
-269		2X11	1.000/25.40	1.140/28.96					
-270		2X13	1.200/30.48	1.340/34.04					
-271		2X14	1.300/33.02	1.440/36.58					
-272		2X15	1.400/33.56	1.540/39.12					
-273		2X17	1.600/40.64	1.740/44.20					
-274		2X20	1.900/48.26	2.040/51.82					
-275		2X21	2.000/50.80	2.140/54.36					
-276		2X22	2.100/53.34	2.240/56.90					
-277		2X25	2.400/60.96	2.540/64.52					
-278		2X26	2.500/63.50	2.640/67.06					
-279		2X30	2.900/73.66	3.040/77.22					
-280		2X32	3.100/78.74	3.240/82.30					
-281		2X34	3.300/83.82	3.440/87.38					
-282		2X35	3.400/86.36	3.540/89.92					
-283		2X37	3.600/91.44	3.740/95.00					
-284		2X39	3.800/96.52	3.940/100.08					
-285		2X40	3.900/99.06	4.040/102.60					
-286		2X41	4.000/101.60	4.140/105.16					
-287		2X44	4.300/109.22	4.440/112.78					
-288		2X46	4.500/114.30	4.640/117.88					
-289		2X47	4.600/116.84	4.740/120.40					
-290		2X49	4.800/121.92	4.940/125.48	.0035/.089				
-291		2X50	4.900/124.46	5.040/128.02	.0030/.076				
-292		2X51	5.000/127.00	5.140/130.56					
-293		2X52	5.100/129.54	5.240/133.10					
-294		2X55	5.400/137.16	5.540/140.72					
-295		2X58	5.700/144.78	5.840/148.34					
-296		2X61	6.000/152.40	6.140/155.96		50u"/1.27u Au			
-297		2X50	4.900/124.46	5.040/128.02	.0030/.076	30u"/.76u Au		RESTRICTED	
-298		2X25	2.400/60.96	2.540/64.52	.0035/.089	40u"/1.02u Au			
-299		2X40	3.900/99.06	4.040/102.60	.0035/.089	40u"/1.02u Au			
-300		2X61	6.000/152.40	6.140/155.96	.003/.076	40u"/1.02u Au			
65000-301	HT NYLON	2X65	6.400/162.56	6.540/166.12	.0035/.089	30u"/.76u Au			NOTE 5, 6

mat'l. code	surface	tolerance	projection	product family
ISO 1302	ISO 1302	ISO 406	ISO 1101	CARD CONN.
ISO 1101	tolerances unless otherwise specified	XXX.01/3	INCH/MM	title
AX	angles	linear	scale 1:1	BERGCON HORIZ. CARD CONN
	0°±2'	XXXX±.005/13		DOUBLE ROW .100/2.54 cc
	dr	M.CLOUSER	6/7/94	dwg no
	enrg	H.SUNDY	6/7/94	65000
	chr	H.SUNDY	6/7/94	sheet 0 of 11
	appd	H.SUNDY	6/7/94	A3
sheet	revision			type
index	sheet			Product Customer Drawing

PRODUCT NUMBER	HOUSING MATERIAL	NO. OF POS	DIM A	DIM B	SPRING THICKNESS	BODY PLATING THICKNESS	SPECIAL MARKINGS AND MISCELLANEOUS	CUSTOMER RESTRICTED	LEAD FREE OPTION
65000-302	HT NYLON	2X7	.600/15.24	.740/18.80	.0035/.089	50u"/1.27u Au		RESTRICTED	NOTE 5, 6
-303		2X19	1.800/45.72	1.940/49.28		30u"/.76u Au			
-304		2X22	2.100/53.34	2.240/56.90					
-305		2X25	2.400/60.96	2.540/64.52					
-306		2X40	3.900/99.06	4.040/102.60					
-307		2X44	4.300/109.22	4.440/112.78	.0035/.089				
-308		2X61	6.000/152.40	6.140/155.96	.0030/.076				
-309		2X10	.900/22.86	1.040/26.42	.0035/.089				
-310		2X41	4.000/101.60	4.140/105.16	.0035/.089				
-311		2X35	3.400/86.36	3.540/89.92	.0035/.089				
-312		2X59	5.800/147.32	5.940/150.88	.0030/.076				
-313		2X30	2.900/73.66	3.040/77.22	.0035/.089				
-314		2X20	1.900/48.26	2.040/51.82					
-315		2X24	2.300/58.24	2.440/61.98					
-316		2X14	1.300/33.02	1.440/36.58		30u"/0.76u Au			
-317		2X28	2.700/68.58	2.840/72.14	.0035/.089	30u"/0.76u Au			
-318		2X65	6.400/162.56	6.540/166.12	.0030/.076	50u"/1.27u Au		RESTRICTED	
-319		<del>2X20</del>	<del>1.900/48.26</del>	<del>2.040/51.82</del>	<del>.0035/.089</del>	<del>30u"/0.76u Au</del>		BNL ONLY	
-450		2X10	.900/22.86	1.040/26.42	.0035/.089	30u"/0.76u Au		RESTRICTED	
-451		2X9	.800/20.32	.940/23.88		50u"/1.27u Au		BNL ONLY	
-452		2X28	2.700/68.58	2.840/72.14		50u"/1.27u Au		BNL ONLY	
65000-453	HT NYLON	2X32	3.100/78.74	3.240/82.30	.0035/.089	50u"/1.27u Au		BNL ONLY	NOTE 5, 6

OBS.



Copyright FCI

mat'l. code	surface	tolerance	projection	product family
ISO 1302	ISO 1302	ISO 406	ISO 1101	CARD CONN.
tr	ecn	no	dr	date
AX				
tolerances unless otherwise specified		title		
angles	linear	BERGCON HORIZ. CARD CONN		
0°±2'	xxx:01/3	DOUBLE ROW .100/2.54 cc		
	xxx:005/13	dwg no		
	xxxx:0020/051	sheet 11 of 11 size		
dr	M.CLOUSER	6/7/94	65000 A3	
enrg	H.SUNDY	6/7/94	type Product Customer Drawing	
chr	H.SUNDY	6/7/94		
appd	H.SUNDY	6/7/94		
sheet index	revision sheet			