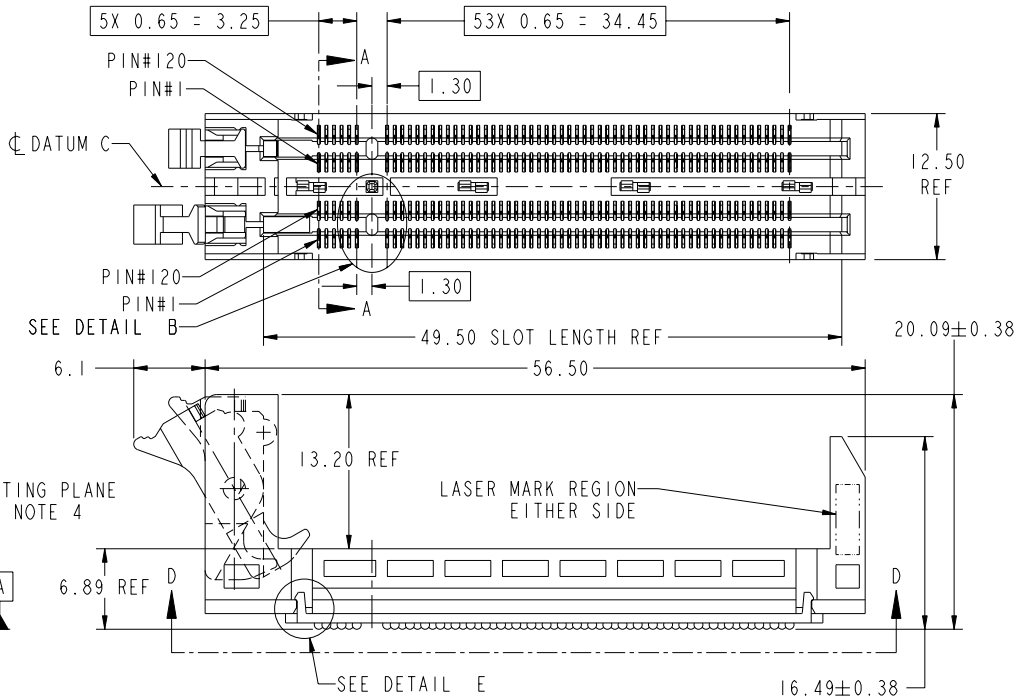
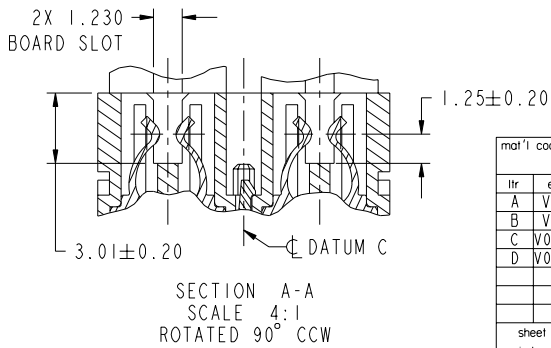
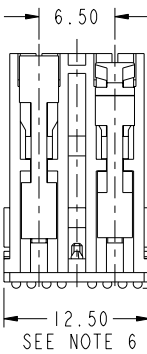
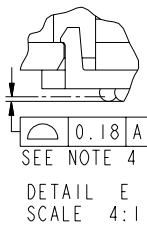




This document is the property of and embodies
 CONFIDENTIAL and PROPRIETARY information of FCI.
 No part of the information shown on this
 document may be used in any way or disclosed
 to others without the written consent of FCI.
 Copyright FCI.

PRODUCT NUMBER
SEE TABLE



mat'l code				tolerances unless otherwise specified		CUSTOMER		FCI	
ltr	ecn no.	dr	date	linear	0.X ± 0.3	COPY		www.fciconnect.com	
A	V11593	BMR	05/29/01		0.XX ± 0.13	projection		title FINAL ASSY. - DUAL VERT. SO DIMM W/BGA	
B	V21135	AJV	09/11/02		0.XXX ± 0.051	MM		product family BGA MEMORY code	
C	V06-1110	LP	2006/11/14	angles	0° ± 2°	scale		size dwg no	
D	V07-0446	LP	2007/09/04	dr	A.ZEREBILOV 11/30/00	2:1		63348	
				eng	A.VASBINDER 11/30/00			213	
				chr	A.VASBINDER 11/30/00			sheet	
				oppd	A.VASBINDER 11/30/00			1 of 5	
sheet index	revision sheet	1	2	3	4	5		code code 22526 4	

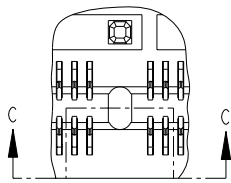
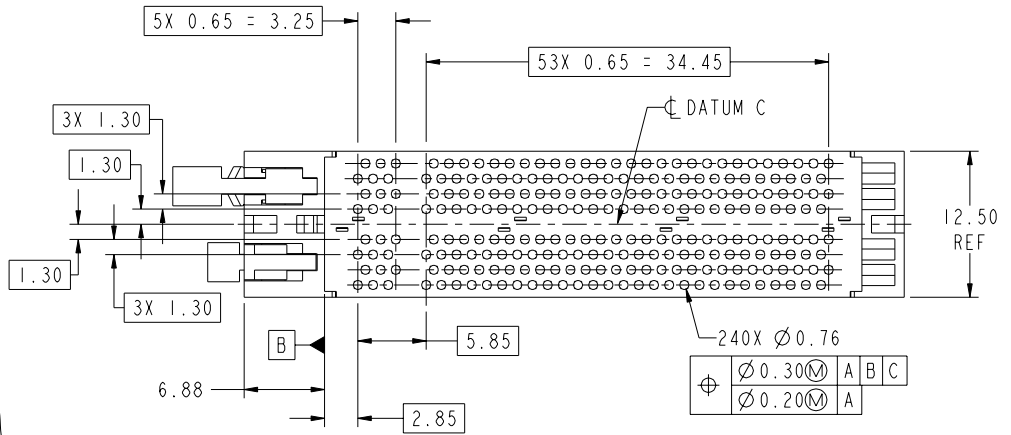
Pro/E

PDM: Rev:D

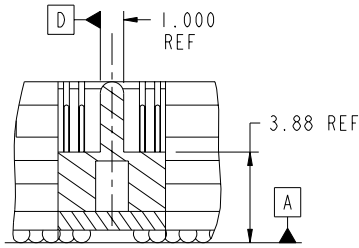
STATUS: Released

Printed: Dec 01, 2010

PRODUCT NUMBER
SEE TABLE



DETAIL B
SCALE 4:1



SECTION C-C

mat'l code				tolerances unless otherwise specified		CUSTOMER		FCJ		
ltr	ecn no.	dr	date	linear	0.X ± 0.3	projection	COPY	www.fcjconnect.com		
D					0.XX ± 0.13			title		
				angles	0.XXX ± 0.051			FINAL ASSY. - DUAL VERT. SO DIMM W/BGA		
				dr	A.ZEREBILOV 11/30/00			product family		
				engr	A.VASBINDER 11/30/00			BGA MEMORY		
				chr	A.VASBINDER 11/30/00			size	dwg no	code
				appd	A.VASBINDER 11/30/00			A	63348	213
sheet index	revision sheet					scale	2:1		sheet 2	
								code code	22526	

This document is the property of and embodies
 CONFIDENTIAL and PROPRIETARY information of FCJ.
 No part of the information shown on this
 document may be used in any way or disclosed
 to others without the written consent of FCJ.
 Copyright FCJ.

REV E - 2006-04-18

Pro/E

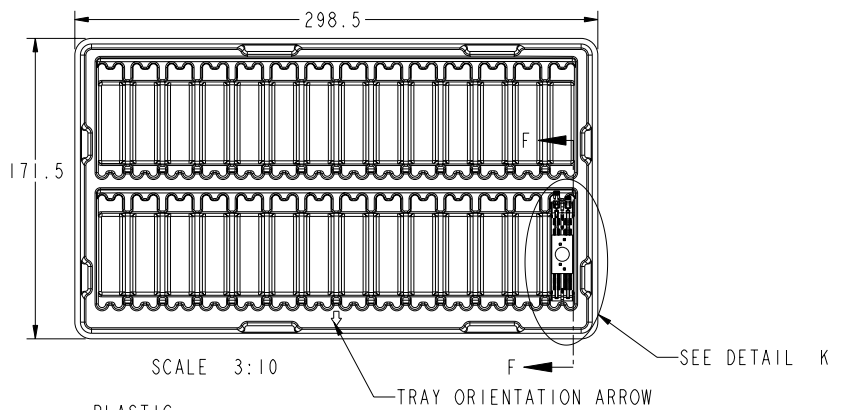
PDM: Rev:D

STATUS: Released

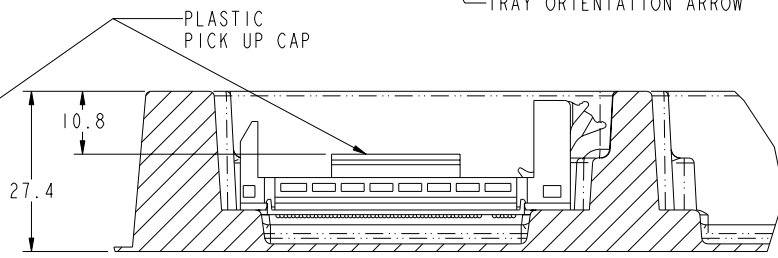
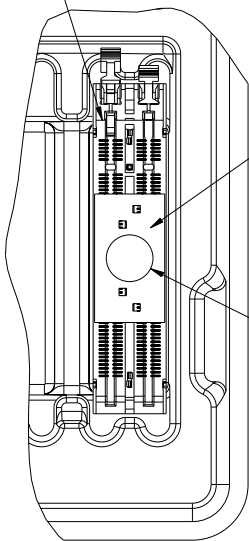
Printed: Dec 01, 2010

P/N TABLE	PICK UP CAP	PACKAGE QTY.	ORIENTATION IN TRAY	SOLDER BALL
63348-002	YES	224 PER BOX	SIDE - SEE NOTE 7	63/37 TIN/LEAD
63348-003	YES	140 PER BOX	VERTICAL	63/37 TIN/LEAD
63348-002LF	YES	224 PER BOX	SIDE - SEE NOTE 7	Sn Au Cu LEAD FREE (SEE NOTE 8 & 9)
63348-003LF	YES	140 PER BOX	VERTICAL	Sn Au Cu LEAD FREE (SEE NOTE 8 & 9)

PACKAGING DETAIL FOR
PART NUMBER 63348-003.
(SUITABLE FOR AUTO PICK AND
PLACE DIRECT FROM TRAY)



BGA CONNECTOR
IN TRAY POCKET 28X



PARTIAL SECTION F-F
ROTATED 90° SCALE 1:1

Ø8.00 VACUUM
PICK AREA

DETAIL K
SCALE 1:1

mat'l code		tolerances unless otherwise specified		CUSTOMER		FCJ	
ltr	ecm no.	dr	date	linear	0.X ±0.3	projection	COPY
D				linear	0.XX ±0.13	MM	www.fcjconnect.com
				angles	0.XXX ±0.051	MM	title FINAL ASSY. - DUAL VERT. SO DIMM W/BGA
				dr	0° ±2°	scale	product family BGA MEMORY
				eng	A.ZEREBILOV 11/30/00	2:5	code 213
				eng	A.VASBINDER 11/30/00	A	sheet 3
				chr	A.VASBINDER 11/30/00		size 63348
				appd	A.VASBINDER 11/30/00		dwg no
sheet index	revision sheet						code 22526



This document is the property of and embodies
CONFIDENTIAL and PROPRIETARY information of FCJ.
No part of the information shown on this
document may be used in any way or disclosed
to others without the written consent of FCJ.
Copyright FCJ.

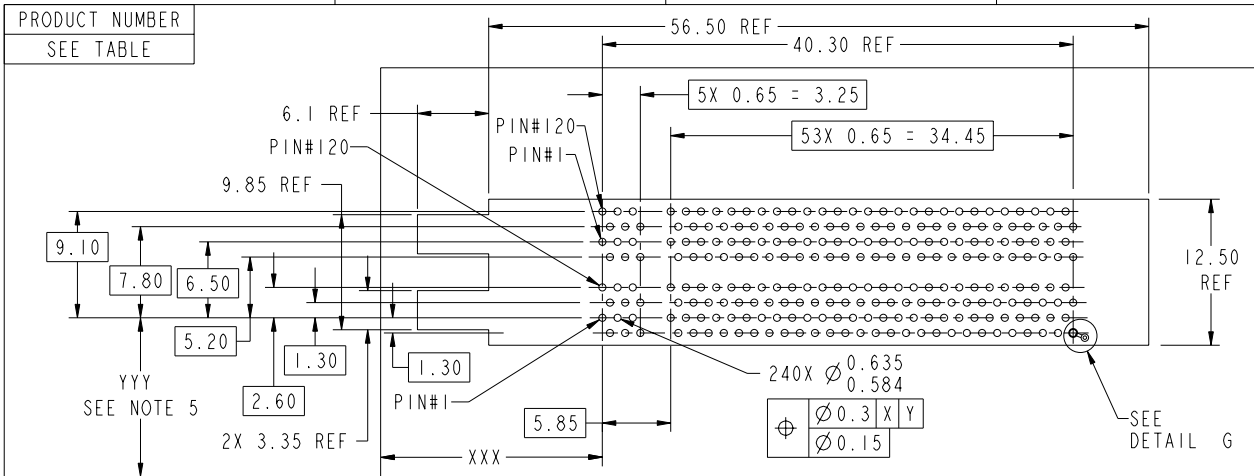
REV E - 2006-04-18

Pro/E

PDM: Rev:D

STATUS: Released

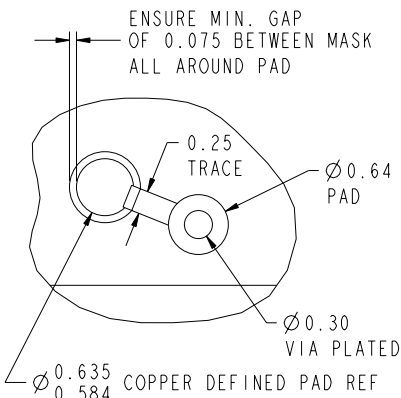
Printed: Dec 01, 2010



RECOMMENDED PAD LAYOUT (NOT INCLUDING VIAS OR TRACES)
ALL DIMENSIONS LOCATED OFF OF PIN #1

NOTES:

1. DIMENSIONS AND TOLERANCES ARE IN ACCORDANCE WITH ASME Y14.5M, 1994 UNLESS OTHERWISE SPECIFIED.
2. MATERIAL: LIQUID CRYSTAL POLYMER, GLASS FILLED, UL 94V-0 RATED. HOUSING COLOR: BLACK, EJECTOR COLOR: NATURAL. TERMINAL MATERIAL: PHOS. BRONZE; SOLDER BALL MATERIAL: 63/37 TIN/LEAD. OR Sn Au Cu PLATING: 0.76um MIN. GOLD, REQUIRED ON CONTACT SURFACE. 1.27um MIN. NICKEL UNDERPLATE ALL OVER.
3. PROFILE CONTROL OF BALL GRID IS MEASURED FROM SEATING PLANE (DATUM A). SEATING PLANE IS FORMED BY THE 3 SPHERICAL CROWNS THAT WOULD REST ON A SURFACE PLATE.
4. DATUMS X AND Y AND DIMENSIONS XXX AND YYY TO BE DETERMINED BY CUSTOMER.
5. DATUM C IS THE CENTERLINE OF THE MEASURED WIDTH OF SPACER.
6. PARTS ARE ORIENTED IN TRAY ON THEIR SIDE, AND ARE NOT SUITED FOR AUTOMATED PICK AND PLACE DIRECTLY FROM THE TRAY.
7. LEADFREE SOLDER BALLS WILL NOT SOLDER PROPERLY IN A LEADED SOLDER PROCESS DUE TO A HIGHER REFLOW TEMPERATURE, LEADFREE PRODUCT IS THEREFORE NOT BACKWARDS COMPATIBLE WITH LEADED SOLDERING APPLICATIONS.
8. THIS PRODUCT MEETS THE EUROPEAN UNION DIRECTIVES AND OTHER COUNTRY REGULATIONS AS DESCRIBED IN GS-22-008 PRODUCT MEETING THIS DIRECTIVE IS IDENTIFIED IN THE LOT CODE NUMBER MARKED ON EACH PART BY HAVING AN "X" IN THE SEVENTH CHARACTER POSITION.



DETAIL G: INDIVIDUAL PAD
(INCLUDING VIA AND TRACE)
SCALE 16:1
240X

mat'l code		tolerances unless otherwise specified		CUSTOMER		FCJ	
ltr	ecn no.	dr	date	linear	0.X ± 0.3	COPY	www.fcjconnect.com
D				projection	0.XX ± 0.13	projection	title FINAL ASSY. - DUAL VERT. SO DIMM W/BGA
				angles	0.XXX ± 0.051	projection	product family BGA MEMORY code 213
				dr	0° ± 2°	MM	size dwg no 63348 sheet 4
				eng	A.ZEREBILOV 11/30/00	scale 2:1	
				ctr	A.VASBINDER 11/30/00		
				appd	A.VASBINDER 11/30/00		
sheet index	revision sheet						code code 22526 4

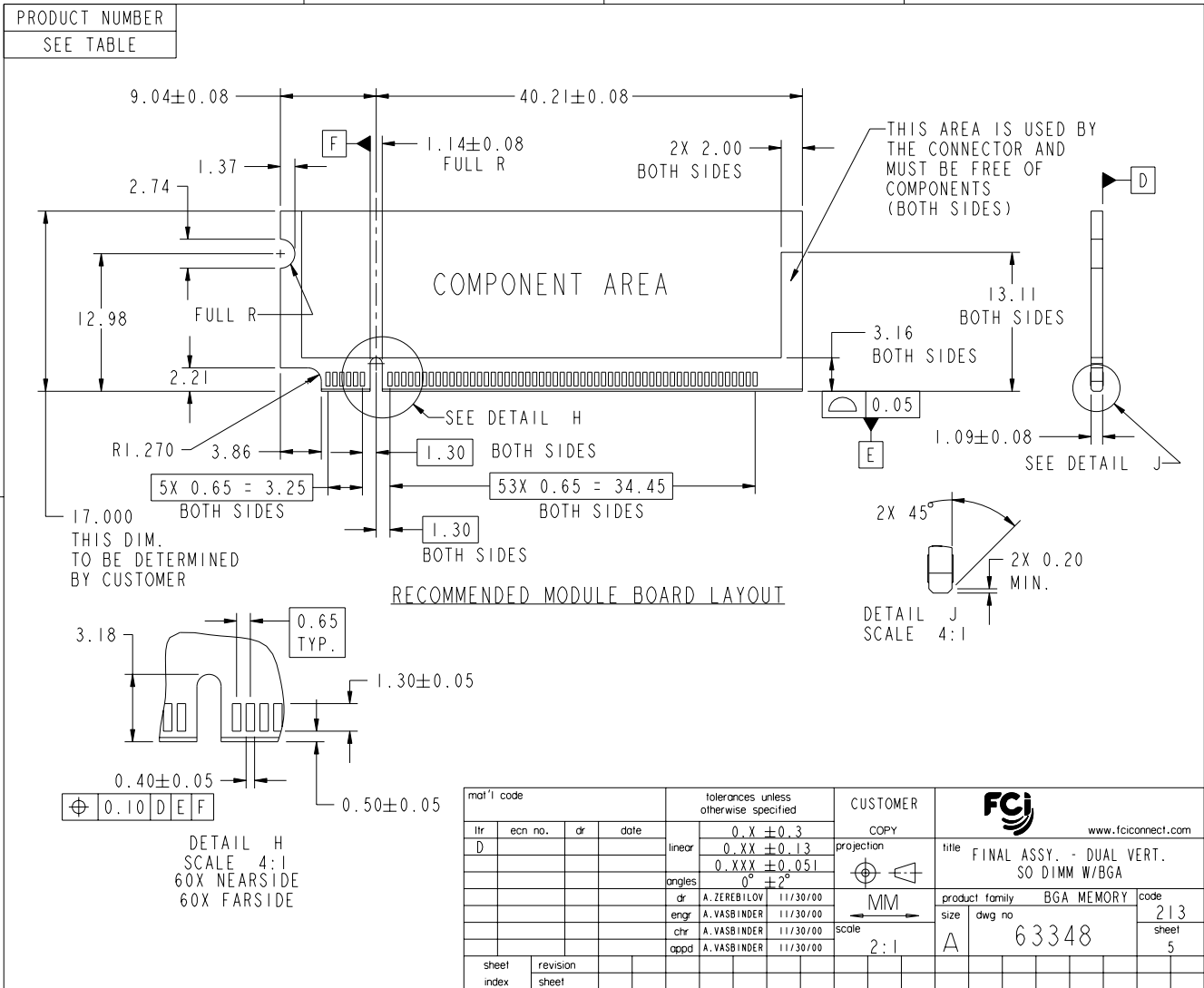


This document is the property of and embodies CONFIDENTIAL and PROPRIETARY information of FCJ. No part of the information shown on this document may be used in any way or disclosed to others without the written consent of FCJ. Copyright FCJ.

REV E - 2006-04-18



This document is the property of and embodies
 CONFIDENTIAL and PROPRIETARY information of FCJ.
 No part of the information shown on this
 document may be used in any way or disclosed
 to others without the written consent of FCJ.
 Copyright FCJ.



REV E - 2006-04-18

PDM: Rev:D STATUS: **Released** Printed: Dec 01, 2010