

4

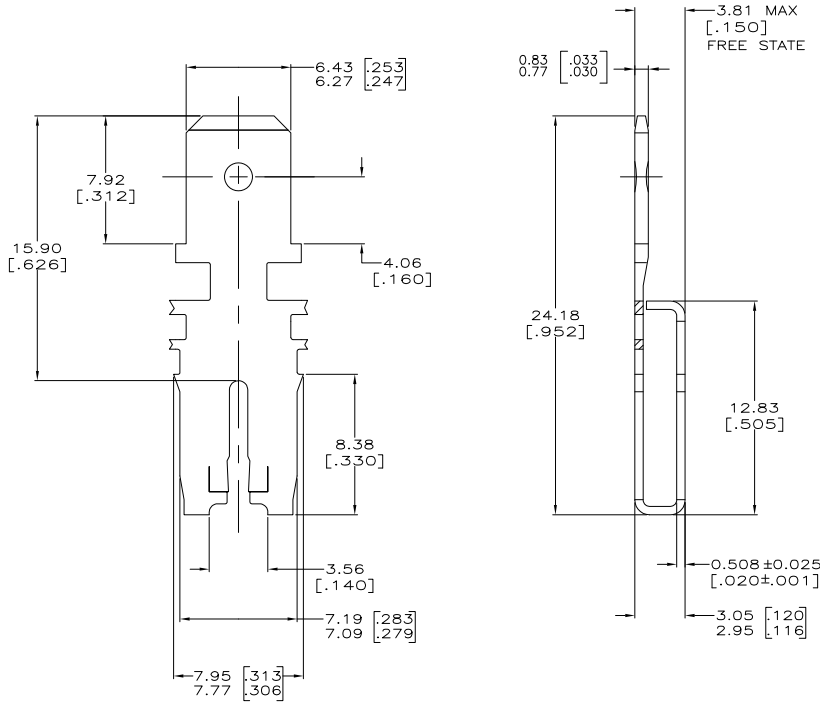
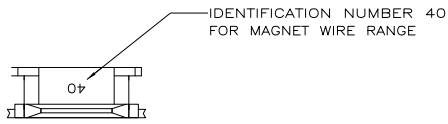
3

2

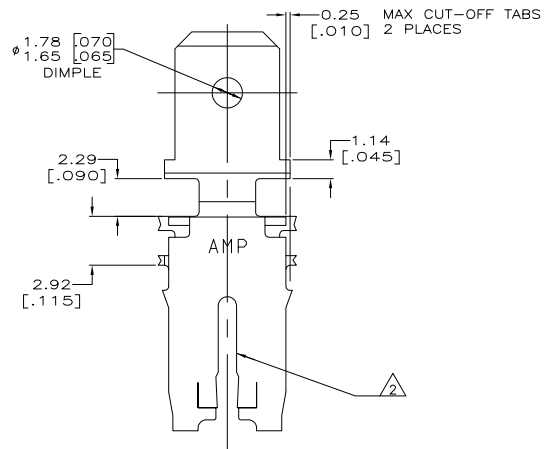
1

THIS DRAWING IS UNPUBLISHED. RELEASED FOR PUBLICATION
 © COPYRIGHT BY TYCO ELECTRONICS CORPORATION. ALL RIGHTS RESERVED.

LOC	DIST	REVISIONS		
F	L/R	DESCRIPTION	DATE	BY/APP'D
AF	50			
J		REVISED PER ECR-06-010427	31AUG06	HMR KR



- CONTINUOUS STRIP ON REELS WITH TERMINALS LOCATED ON 8.38 ± 0.08 [.330 ± .003] CENTERS.
- SLOT ACCEPTS 1.45–1.29mm DIA [#15–#16] AWG COPPER MAGNET WIRE. TWO WIRES OF THE SAME SIZE MAX PER SLOT.
- AFTER INSERTION INTO PLASTIC HOLDER, TAB PORTION MUST BE BENT OVER 45° TO 90° OR POTTED-IN TO PREVENT PULL-OUT WHEN MATING RECEPTACLE IS DISCONNECTED.
- VARNISH RESIST OVER 0.002032 [.000080] MIN TIN PLATE.
- PRELIMINARY – NOT FOR PRODUCTION.



H04 PRE-MILLED PHOS BRONZE	63064-2
4M PRE-MILLED BRASS	63064-1
MATERIAL	PART NUMBER

THIS DRAWING IS A CONTROLLED DOCUMENT.		DRW: MICHAEL S. FEYER 07MAY1999	Tyco Electronics Corporation	
		CHK: JEFF R. RUTH 07JUN1999	Harrisburg, PA 17105-3608	
		APPC: KURT A. RANDOLPH	Tyco Electronics	
		PRODUCT SPEC: 108-2053	TAB, 6.35 [.250] FASTON, 500 SERIES MAG-MATE	
DIMENSIONS: mm [INCHES]		APPLICATION SPEC: 114-2066	SIZE: A2	CAGE CODE: 00779
MATERIAL: SEE TABLE		WEIGHT: -	SCALE: 6:1	SHEET: 1 of 1
FINISH: 4		CUSTOMER DRAWING	REV: J	RESTRICTED TO: -

AMP 1471-9 REV 31MMR2000

63064

A