

PRODUCT NO.	PACKAGING STYLE	POSITIONING BOSS	PACKAGING SPEC.	PRODUCT SPEC.
62875-001	TRAY	WITH	GS-14-558	110-374
62875-001T	TAPE & REEL			
62875-002	TRAY	WITHOUT	GS-14-558	110-374
62875-002T	TAPE & REEL			

REVISIONS				
REV	DESCRIPTION	ECN	BY	DATE
A	RELEASED	J10208/NLT	8/12/01	
B	REVISED	J10281/NLT	4/12/01	
C	REVISED	J05-006/M.HB	09/05	

62875-00\*\*  
62875-00\*\*LF

LEAD FREE PRODUCT(NOTE4)

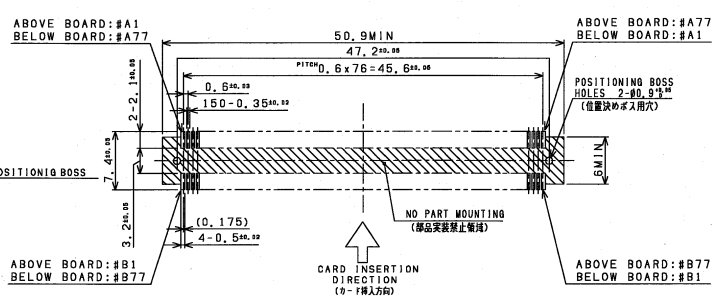
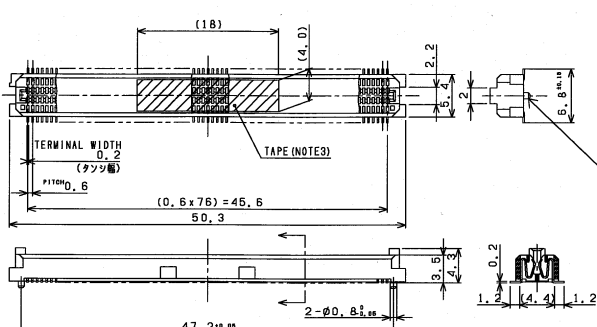
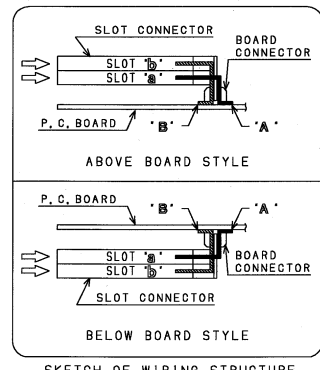
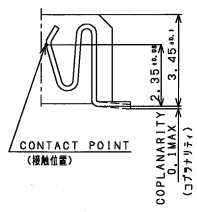


TABLE PIN ASSIGNMENTS (for D/D CARBUS)

PC CARD CONNECTOR	P. C. BOARD	PC CARD CONNECTOR	P. C. BOARD	PC CARD CONNECTOR	P. C. BOARD	PC CARD CONNECTOR	P. C. BOARD
♂1	A1	♂10	A21	♂19	A41	♂51	A61
♂35	A2	---	A22 (GND)	---	A42 (GND)	♂28	A62
♂2	A3	♂44	A23	♂53	A43	♂62	A63
♂36	A4	♂11	A24	♂20	A44	♂29	A64
♂3	A5	♂45	A25	♂54	A45	---	A65 (GND)
♂37	A6	♂12	A26	♂21	A46	♂53	A66
♂4	A7	♂46	A27	♂55	A47	♂30	A67
♂38	A8	---	A28 (GND)	♂22	A48	♂54	A68
---	A9 (GND)	♂13	A29	---	A49 (GND)	♂31	A69
♂5	A10	♂47	A30	♂56	A50	♂65	A70
♂39	A11	♂14	A31	♂23	A51	♂32	A71
♂6	A12	♂48	A32	♂57	A52	♂66	A72
♂40	A13	♂15	A33	♂24	A53	---	A73 (GND)
♂7	A14	♂49	A34	♂58	A54	♂33	A74
♂41	A15	♂16	A35	♂25	A55	♂67	A75
---	A16 (GND)	♂50	A36	♂59	A56	♂34	A76
♂8	A17	♂17	A37	---	A57 (GND)	♂68	A77
♂42	A18	♂51	A38	♂26	A58		
♂9	A19	♂18	A39	♂60	A59		
♂43	A20	♂52	A40	♂27	A60		

SLOT 'A' IS THE SAME AS THIS TABLE

- PRODUCTS ARE THE SAME IRRESPECTIVE OF THE PRESENCE OF LF.  
(LF:鉛フリー材料) (無鉛)
- TAPE ON THE TOP FOR AUTO-MOUNT MACHINE HANDLING.  
(自動溶接機対応テープ)
- RECOMMENDED P.C. BOARD LAYOUT DIMENSIONS ARE SHOWN IN 'EJ-AC' SLOT CONNECTOR DRAWING.  
(推奨P.C.ボードレイアウト寸法は「EJ-AC」スロットコネクタの図面に示されています。)
- NOTE 1. THIS PRODUCT USED WITH 'EJ-AC' SLOT CONNECTOR.  
(注) (EJ-AC)スロットコネクタと併用してください。



SHEET INDEX	ISSUE SH. NO.	C	A	1	2	MAN	OR	DATE	CUSTOMER COPY	TITLE	PRODUCT FAMILY	CODE
							M. Hasegawa	5/30/05		CARDBUS III BOARD CONNECTOR (RE-AH SERIES)	SHAW: Rectaplastic CB III & VC-> VII	
							CHK					
							APPRO					

TOLERANCES UNLESS OTHERWISE SPECIFIED  
UP TO 10mm: ±0.2  
LINEAR ABOVE 10mm: ±0.25  
FINISH

SCALE: SIZE 10mm: NO. 62875  
UNIT: mm

DO NOT SCALE PRINT THIS INFORMATION IS CONFIDENTIAL AND IS DISCLOSED TO YOU ON CONDITION THAT NO FURTHER DISCLOSURE IS MADE BY YOU TO OTHER THAN FCI PERSONNEL WITHOUT WRITTEN AUTHORIZATION FROM FCI JAPAN K.K.

PRODUCT NO.
62875-001(LF)
62875-0011(LF)
62875-002(LF)
62875-0021(LF)

62875-00\*\*  
62875-00\*\*LF } LEAD FREE PRODUCT(NOTE4)

REVISIONS			
REV	DESCRIPTION	ECN	BY   DATE
A	RELEASED	005-0306	M.HS/30/05

TABLE PIN ASSIGNMENTS (for CardBus / Express COMBO SLOT)

PC CARD CONN.	BOARD CONN.	PC CARD CONN.	BOARD CONN.	PC CARD CONN.	BOARD CONN.	PC CARD CONN.	BOARD CONN.
a1	A1	a10	A21	a19	A41	a61	A61
a35	A2	---	A22 (GND)	---	A42 (GND)	a28	A62
a2	A3	a44	A23	a53	A43	a62	A63
a36	A4	a11	A24	a20	A44	a29	A64
a3	A5	a45	A25	a54	A45	---	A65 (GND)
a37	A6	a12	A26	a21	A46	a63	A66
a4	A7	a46	A27	a55	A47	a30	A67
a38	A8	---	A28 (GND)	a22	A48	a64	A68
---	A9 (GND)	a13	A29	---	A49 (GND)	a31	A69
a5	A10	a47	A30	a56	A50	a65	A70
a39	A11	a14	A31	a23	A51	a32	A71
a6	A12	a48	A32	a57	A52	a66	A72
a40	A13	a15	A33	a24	A53	---	A73 (GND)
a7	A14	a49	A34	a58	A54	a33	A74
a41	A15	a16	A35	a25	A55	a67	A75
---	A16 (GND)	a50	A36	a59	A56	a34	A76
a8	A17	a17	A37	---	A57 (GND)	a68	A77
a42	A18	a51	A38	a26	A58		
a9	A19	a18	A39	a60	A59		
a43	A20	a52	A40	a27	A60		

EXPRESS CARD CONN.	BOARD CONN.	EXPRESS CARD CONN.	BOARD CONN.	EXPRESS CARD CONN.	BOARD CONN.	EXPRESS CARD CONN.	BOARD CONN.
b1	B1	b13	B21	b25	B41	---	B61 (GND)
b2	B2	---	B22 (GND)	---	B42 (GND)	---	B62 (GND)
b3	B3	b14	B23	b26	B43	---	B63 (GND)
---	B4 (GND)	b15	B24	---	B44 (GND)	---	B64 (GND)
b4	B5	---	B25 (GND)	---	B45 (GND)	---	B65 (GND)
---	B6 (GND)	b16	B26	---	B46 (GND)	---	B66 (GND)
b5	B7	---	B27 (GND)	---	B47 (GND)	---	B67 (GND)
b6	B8	---	B28 (GND)	---	B48 (GND)	---	B68 (GND)
---	B9 (GND)	b17	B29	---	B49 (GND)	---	B69 (GND)
b7	B10	---	B30 (GND)	---	B50 (GND)	---	B70 (GND)
---	B11 (GND)	b18	B31	---	B51 (GND)	---	B71 (GND)
b8	B12	b19	B32	---	B52 (GND)	---	B72 (GND)
---	B13 (GND)	---	B33 (GND)	---	B53 (GND)	---	B73 (GND)
b9	B14	b20	B34	---	B54 (GND)	---	B74 (GND)
b10	B15	---	B35 (GND)	---	B55 (GND)	---	B75 (GND)
---	B16 (GND)	b21	B36	---	B56 (GND)	---	B76 (GND)
b11	B17	b22	B37	---	B57 (GND)	---	B77 (GND)
---	B18 (GND)	b23	B38	---	B58 (GND)		
b12	B19	---	B39 (GND)	---	B59 (GND)		
---	B20 (GND)	b24	B40	---	B60 (GND)		

SHEET INDEX	ISSUE SH. NO.																							
TOLERANCES UNLESS OTHERWISE SPECIFIED														WAY	DR	DATE	CUSTOMER COPY	TITLE	BOARD CONNECTOR (RE-AH SERIES)				CODE	
UP TO 10mm:±0.2														---	H. Hasegawa	5/30/05	---	---	SAW Receipts CB III & VC-> VII				UP	
LINEAR ABOVE 10mm:±0.25														FINISH	CHK	DATE	UNIT	SCALE	SIZE	DWG. NO.	REV	SHEET		
ANGLES														---	---	---	---	---	C	62875	A	2		

DF-003A REV.F  
DO NOT SCALE PRINT THIS INFORMATION IS CONFIDENTIAL AND IS DISCLOSED TO YOU ON CONDITION THAT NO FURTHER DISCLOSURE IS MADE BY YOU TO OTHER THAN FCI PERSONNEL WITHOUT WRITTEN AUTHORIZATION FROM FCI JAPAN K.K.