

REV	DESCRIPTION	EN	BY	DATE
A	RELEASED	100367	NJT	6/27/00
B	REVISED	110662	M.H	10/26/02
C	REVISED	120558	M.H	10/24/02
D	REVISED	160078	S.M	08/23/05

PRODUCT NO.	COVER	MOUNT STYLE	STAND OFF	APPLICABLE HOR P/N	PACKAGING SPEC.	PRODUCT SPEC.
62604-22R0	-					
62604-22LD	-	ABOVE	2.2 mm			
62604-22R0C	WITH					
62604-22LOC	WITH			62398-22A	0355-14-655	110-415
62604-22R0 LF	-					
62604-22LD LF	-					
62604-22R0CLF	WITH	ABOVE	2.2 mm			
62604-22LOC LF	WITH					

11. 型番末尾のLFは鉛フリー製品を示します。
この製品はワッシャー等の半田付のクロセズに適合していません。

10. 本品はサイズ1, 2カードに対応しています。
9. ピンヘッドへの組込はb部を水平になるように押さえ、本品と確実に合させてから、c部をピンヘッド上面まで押し込む。
8. 推奨体位置 (a部)。
7. 基板実装時の寸法を表す。
6. 推奨パターン寸法図はピンヘッド製品図に示す。
5. 基板への取付はM2 x P0.4ネジ及び座金を各4個使用する。
4. 取付ネジ長さは使用する基板厚とx寸法を確認の上決定のこと。
3. 最大ネジ締め締付トルク: 0.245N・m (2.5kgf・cm)。
2. 本品はピンヘッドと合わせて使用する。
1. ホットの色調は黒。

注記

11. -LF suffix means Lead Free
Product is not intended to be exposed to a manufacturing solder process
10. PC CARD TYPE 1, 2 IS APPLICABLE.
9. AS MOUNTING METHOD TO PIN-HEADER, IT SHALL BE PUT MARKED PORTION b HORIZONTALLY AND BE FITTED ON COMPLETELY, THEN IT SHALL BE PUSHED MARKED PORTION c BY TOP SURFACE OF THE PIN-HEADER.
8. RECOMMENDED BODY POSITION (PART a).
7. SHOW P. C. BOARD MOUNTING DIMENSIONS.
6. SEE PIN-HEADER PRODUCT DRAWING FOR RECOMMENDED PATTERN DIMENSIONS.
5. 4-M2xP0.4 SCREW WITH WASHER ARE REQUIRED FOR FASTENING CONNECTOR TO P, C, BOARD.
4. DETERMINE MOUNTING SCREW LENGTH UPON CHECKING P. C. BOARD THICKNESS AND 'x' DIMENSION, ('x' SHOWS REQUIRED SCREW LENGTH FROM MOUNTING SURFACE.)
3. MAXIMUM TIGHTENING TORQUE: 0.245N・m (2.5kgf・cm).
2. THIS PRODUCT USED WITH PIN-HEADER.
1. BUTTON COLOR IS BLACK.

NOTE

⑤	SPECIAL SPACER	2	ZINC ALLOY		
④	SPACER	2	STAINLESS STEEL		
③	SHROUD	1	COPPER ALLOY	CONTACT AREA GOLD OVER NICKEL	
②	BUTTON	1	ABS		UL 94HB
①	CASE	2	STAINLESS STEEL		
NO	DESCRIPTION	QTY	MATERIAL	FINISH	REMARKS

SHEET INDEX	ISSUE	D	D	D	D	D	D	D	D	D	D	D	D	D	D	D	D	D	D	D
1	1	2	3	4	5															

AFCI

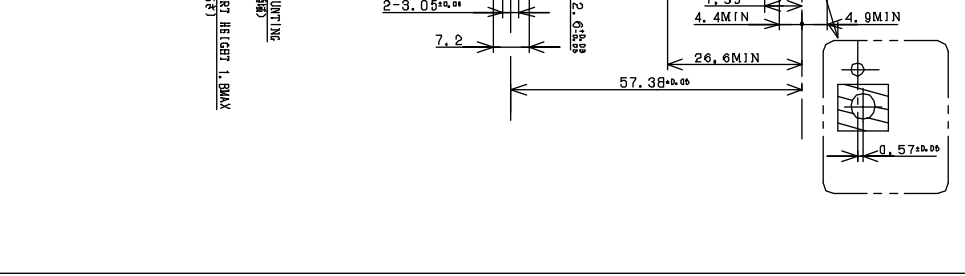
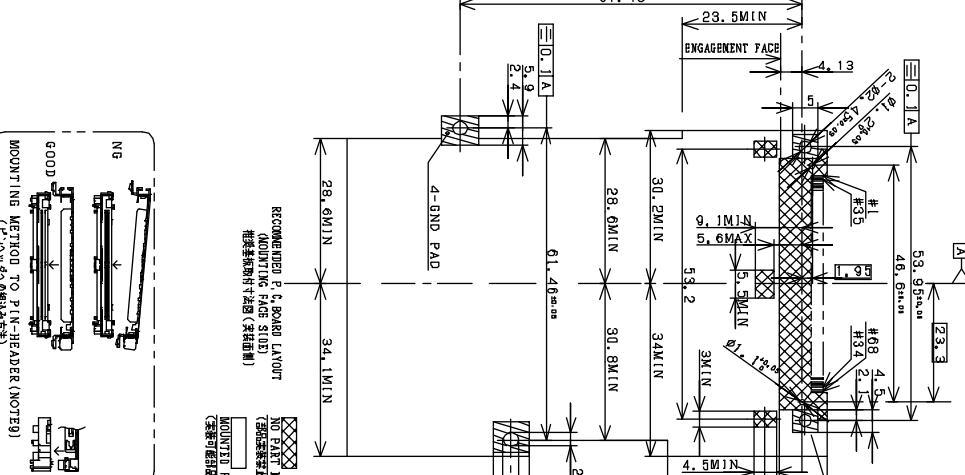
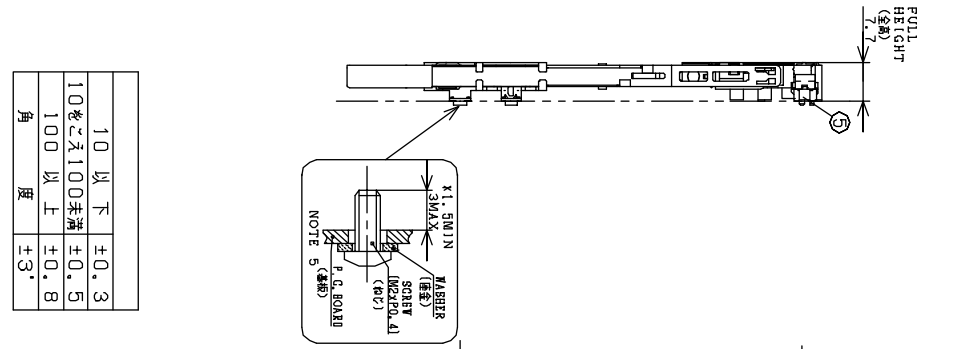
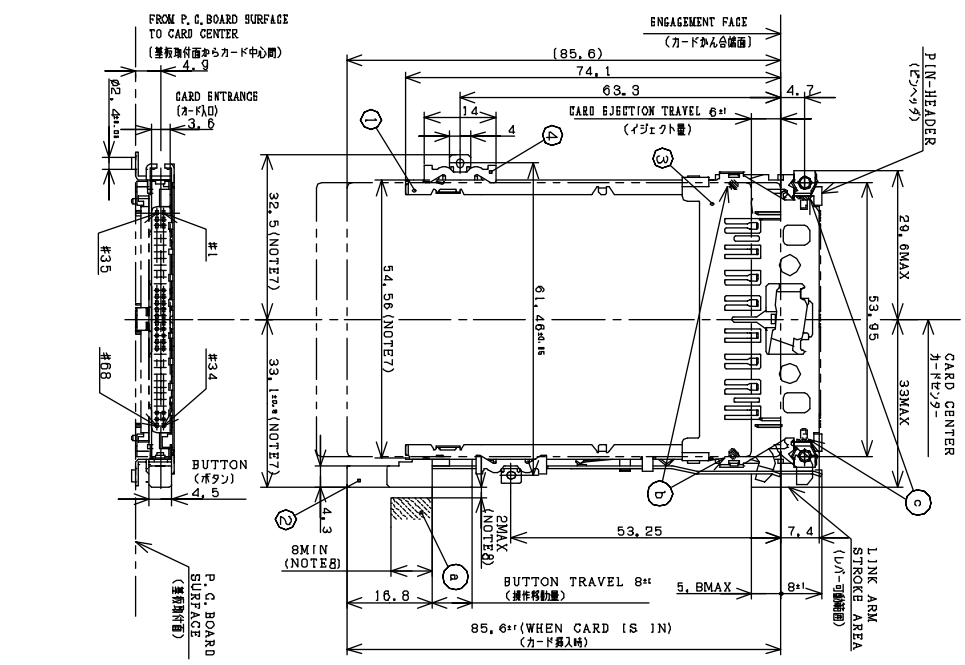
S/D CARBONS ELECT MECH.
1-STEP ABOVE MOUNT.

SCALE: 3/2

REV: D

PRODUCT NO.
62604-22R0
62604-22ROLL

REV	DESCRIPTION	EN	BY	DATE
A	RELEASED	100367	N.T	6/2/00
B	REVISED	110662	M.H	10/27/03
C	REVISED	120559	M.H	10/24/03
D	REVISED	105-02	M.H	09/23/05



5F-003A REV. F
DO NOT SCALE PRINT THE INFORMATION IN COMPONENT AND IS SUBJECTS TO YOU ON CONDITION THAT NO FURTHER DISCUSSURE IS MADE BY YOU TO OTHER THAN FOR RESPONSES WITHOUT WRITTEN AUTHORIZATION FROM FUJIFILM K.K.

SHEET INDEX	ISSUE SH NO.	DATE	CUSTOMER	SCALE	DATE

LINEAR	ANGLES

DR	DATE	CUSTOMER	SCALE	DATE
Starting Lin	08/23/06			
Eng	08/23/06			
Startling Lin	08/23/06			
APPD	08/23/06			

PRODUCT FAMILY: S/D CARDBUS EJECT MECH.
SCALE: 1-STEP ABOVE MOUNT
Header: CG SHI II
SCALE: 3/2 C
PRODUCT NO.: 62604
REV: D
BY: Zof

FCI

