

PRODUCT NO.	COVER	MOUNT STYLE	STAND OFF	APPLICABLE HDR P/N	PACKAGING SPEC	PRODUCT SPEC
62600-00R0	-	BELOW	0 mm	62597-00B	GES-14-655	110-415
-00L0	-					
-00ROC	WITH					
-00LOC	WITH					

REVISIONS				
REV	DESCRIPTION	ECN	BY	DATE
A	RELEASED	J00354	N.T	5/13/00
B	REVISED	J20569	M.H	10/24/02

9. 本品はタイプ1, 2カードに対応しています。
8. ピンヘッダへの組込はb部を水平になるように押さえ、
本品と確実に合せてから、c部をピンヘッダ上面まで押し込む。
7. 基板実装時の寸法を表す。
6. 推奨パターン寸法図はピンヘッダ製品図に示す。
5. 基板への取付はM2xP0.4ネジ及び筐金を各4個使用する。
4. 取付ネジ長さは使用する基板厚と*寸法を確認の上選定のこと。
3. 最大ネジ締め締付トルク: 0.245N・m (2.5kgf・cm)。
2. 本品はピンヘッダと合わせて使用する。
1. ボタンの色調は表参照のこと。
9. PC CARD TYPE 1, 2 IS APPLICABLE.
8. AS MOUNTING METHOD TO PIN-HEADER,
IT SHALL BE PUT MARKED PORTION B HORIZONTALLY AND BE FITTED ON COMPLETELY,
THEN IT SHALL BE PUSHED MARKED PORTION C BY TOP SURFACE OF THE PIN-HEADER.
7. SHOW P, C, BOARD MOUNTING DIMENSIONS.
6. SEE PIN-HEADER PRODUCT DRAWING FOR RECOMMENDED PATTERN DIMENSIONS.
5. 4-M2xP0.4 SCREW WITH WASHER ARE REQUIRED FOR FASTENING CONNECTOR TO P, C, BOARD.
4. DETERMINE MOUNTING SCREW LENGTH UPON CHECKING P, C, BOARD THICKNESS AND * DIMENSION,
(* SHOWS REQUIRED SCREW LENGTH FROM MOUNTING SURFACE.)
3. MAXIMUM TIGHTENING TORQUE: 0.245N・m (2.5kgf・cm).
2. THIS PRODUCT USED WITH PIN-HEADER.
1. BUTTON COLOR : REFER TO TABLE.

注記

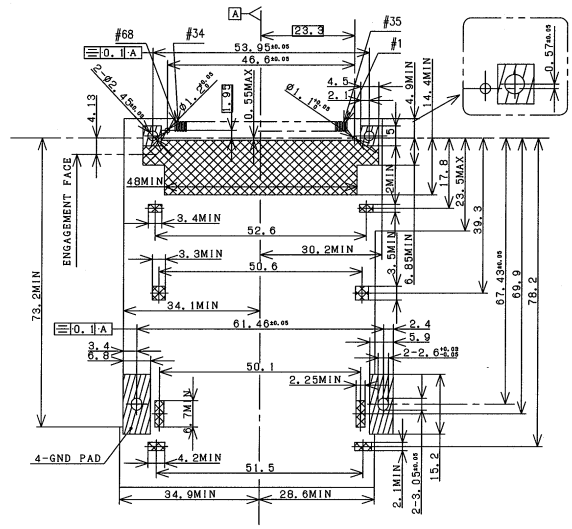
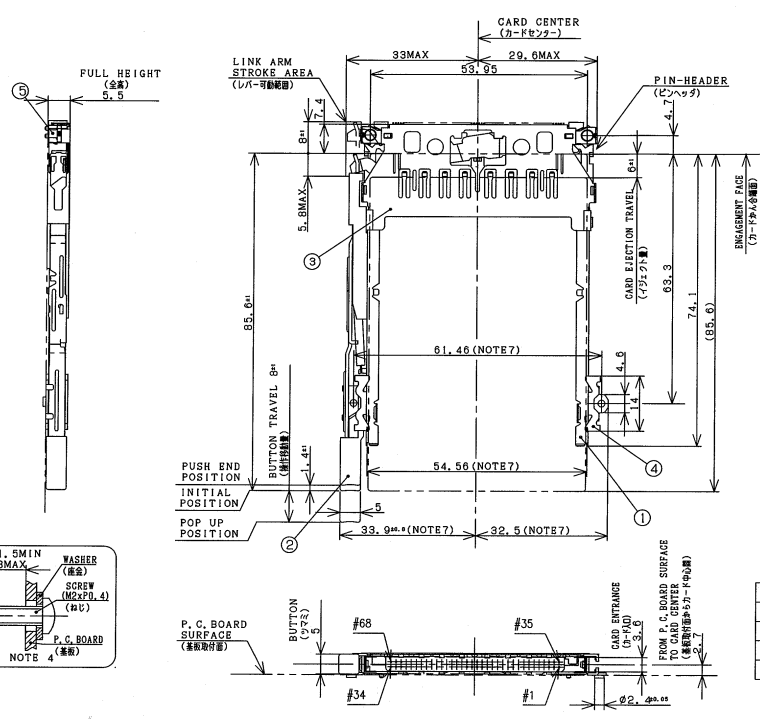
NOTE

⑤	SPECIAL SPACER	2	ZINC ALLOY		
④	SPACER	2	STEEL	ZINC PLATING	
③	SHROUD	1	COPPER ALLOY	NICKEL PLATING	
②	BUTTON	1	PBT		UL 94HB
①	CASE	2	STAINLESS STEEL		
NO	DESCRIPTION	QTY	MATERIAL	FINISH	REMARKS

SHEET INDEX	ISSUE SH NO.	B 1	B 2	B 3	B 4	B 5															
TOLERANCES UNLESS OTHERWISE SPECIFIED		MAY SEE TABLE		OR H. Hasegawa		DATE 10/24/02		CUSTOMER COPY		TITLE S/D SMTIL CARBUS EJECT MECH.		2-STEP BELOW MOUNT		PRODUCT FAMILY Header CSI SMT IL		CODE SP		REV B		SHEET 1 of 5	
LINAR																					
ANGLES																					

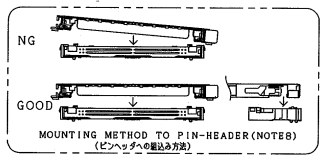
PRODUCT NO.
62600-00R0

REVISIONS				
REV	DESCRIPTION	ECN	BY	DATE
A	RELEASED	J00354	N.T	5/23/00
B	REVISED	J20569	M.H	10/24/02



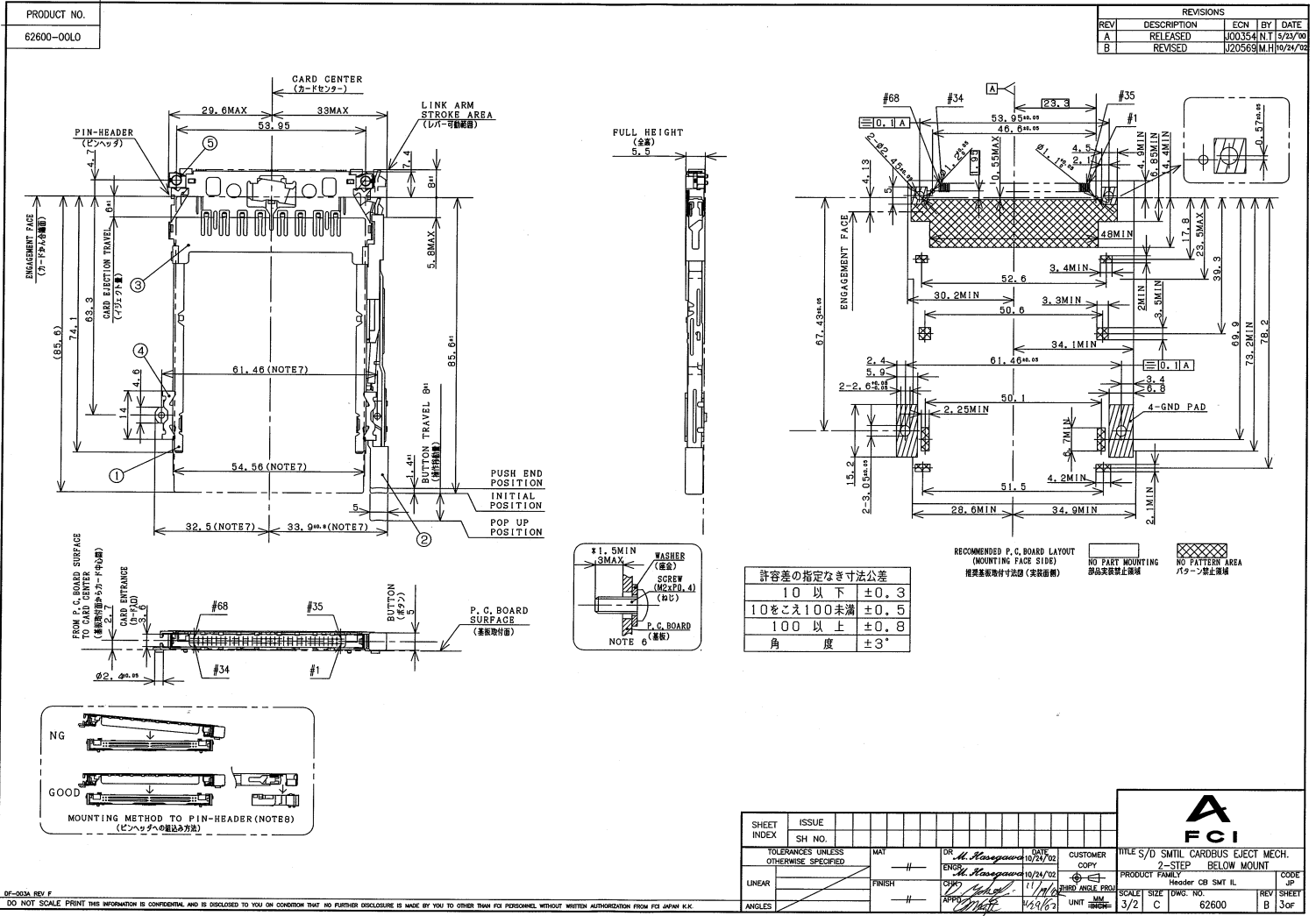
許容差の指定なき寸法公差

10 以下	±0.3
10 をこえ 100 未満	±0.5
100 以上	±0.8
角 度	±3'



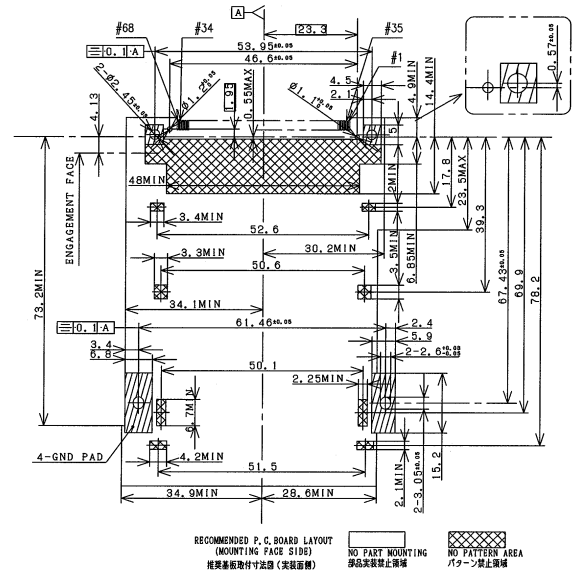
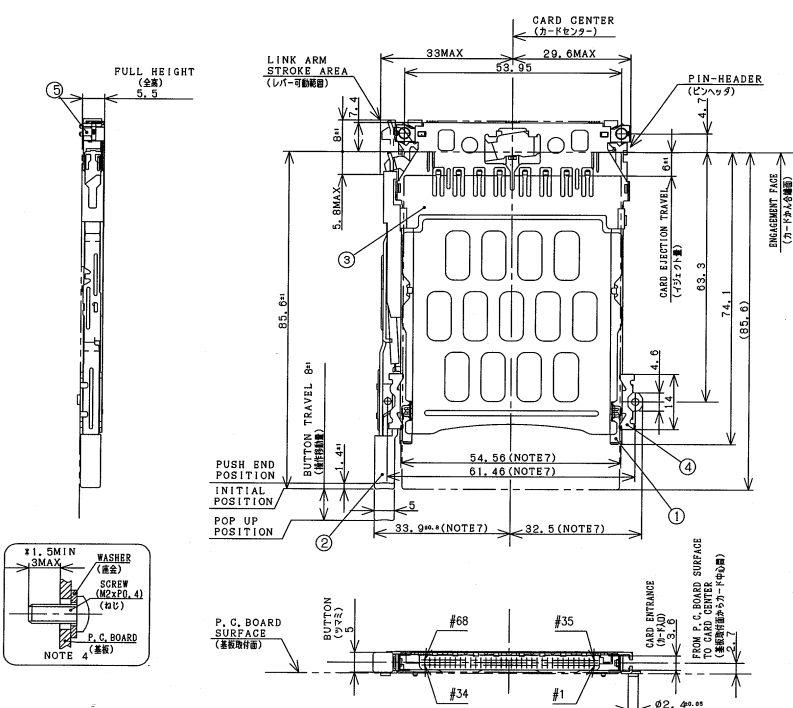
DF-003A REV. F
DO NOT SCALE. PRINT THIS INFORMATION IS CONFIDENTIAL AND IS DISCLOSED TO YOU ON CONDITION THAT NO FURTHER DISCLOSURE IS MADE BY YOU TO OTHER THAN FCI PERSONNEL WITHOUT WRITTEN AUTHORIZATION FROM FCI JAPAN K.K.

SHEET INDEX	ISSUE SH. NO.	MAY	OR H. Hasegawa	DATE 10/24/02	CUSTOMER COPY	TITLE S/D SMTIL CARDBUS EJECT MECH. 2-STEP BELOW MOUNT
LINEAR		—	H. Hasegawa	11/1/02 <td>3RD ANGLE PROJ. <td>PRODUCT FAMILY Header OB SMT IL </td></td>	3RD ANGLE PROJ. <td>PRODUCT FAMILY Header OB SMT IL </td>	PRODUCT FAMILY Header OB SMT IL
ANGLES		—	APPROV. [Signature]	1/25/03 <td>UNIT <td>SCALE SIZE DWG. NO. 3/2 C 62600</td> </td>	UNIT <td>SCALE SIZE DWG. NO. 3/2 C 62600</td>	SCALE SIZE DWG. NO. 3/2 C 62600
						REV SHEET B 2 of



PRODUCT NO.
62600-00ROC

REVISIONS			
REV	DESCRIPTION	ECN	BY DATE
A	RELEASED	J00354	N.T 5/23/00
B	REVISED	J20569	M.H 10/24/02



許容差の指定なき寸法公差

10 以下	±0.3
10 をこえ 100 未満	±0.5
100 以上	±0.8
角 度	±3'

SHEET INDEX	ISSUE SH. NO.	MAY	OR	DATE	CUSTOMER COPY	TITLE	PRODUCT FAMILY	SCALE	SIZE	TOWG. NO.	REV	SHEET
		—	M. Hasegawa	10/24/02		S/D SMTL CARDBUS EJECT MECH. 2-STEP BELOW MOUNT	Header CB SMT. IL	3/2	C	62600	B	4 of

CF-003A REV. F
DO NOT SCALE PRINT THIS INFORMATION IS CONFIDENTIAL AND IS DISCLOSED TO YOU ON CONDITION THAT NO FURTHER DISCLOSURE IS MADE BY YOU TO OTHER THAN FCI PERSONNEL WITHOUT WRITTEN AUTHORIZATION FROM FCI JAPAN K.K.

