

PRODUCT NO.	COVER	BUTTON COLOR	MOUNT STYLE	STAND OFF	APPLICABLE HDR P/N	PACKAGING SPEC	PRODUCT SPEC
62599-00RO	-	BLACK	ABOVE	0 mm	62596-00A	GS-14-655	110-415
-00LO	-						
-00ROC	WITH						
-00LOC	WITH						
-00R1C	WITH						

REVISIONS			
REV	DESCRIPTION	ECN	BY DATE
A	RELEASED	U90470	N.T. 12/21/99
B	REVISED	J00242	N.T. 3/23/00
C	REVISED	J00271	N.T. 6/5/00
D	REVISED	U10204	N.T. 2/20/01
E	REVISED	U10418	M.H. 7/20/01
F	REVISED	U20569	M.H. 10/24/02

10. オプション(カバー)装着品。
 9. 本品はタイプ1, 2カードに対応しています。
 8. ピンヘッダへの組込はb部を水平になるように押さえ、
 本品と確実に合させてから、c部をピンヘッダ上面まで押し込む。
 7. 基板実装時の寸法を表す。
 6. 推奨パターン寸法図はピンヘッダ製品図に示す。
 5. 基板への取付はM2xP0.4ネジ及び座金を各4個使用する。
 4. 取付ネジ長さは使用する基板厚とx寸法を確認の上選定のこと。
 3. 最大ネジ締め締付トルク: 0.245N・m (2.5kgf・cm)。
 2. 本品はピンヘッダと合わせて使用する。
 1. ボタンの色調は表参照のこと。

注記

10. OPTION (COVER) IS ATTACHED.
 9. PC CARD TYPE 1, 2 APPLICABLE.
 8. AS MOUNTING METHOD TO PIN-HEADER,
 IT SHALL BE PUT MARKED PORTION B HORIZONTALLY AND BE FITTED ON COMPLETELY,
 THEN IT SHALL BE PUSHED MARKED PORTION C BY TOP SURFACE OF THE PIN-HEADER.
 7. SHOW P, C, BOARD MOUNTING DIMENSIONS.
 6. SEE PIN-HEADER PRODUCT DRAWING FOR RECOMMENDED PATTERN DIMENSIONS.
 5. 4-M2xP0.4 SCREW WITH WASHER ARE REQUIRED FOR FASTENING CONNECTOR TO P, C, BOARD.
 4. DETERMINE MOUNTING SCREW LENGTH UPON CHECKING P, C, BOARD THICKNESS AND 'x' DIMENSION.
 ('x' SHOWS REQUIRED SCREW LENGTH FROM MOUNTING SURFACE.)
 3. MAXIMUM TIGHTENING TORQUE: 0.245N・m (2.5kgf・cm).
 2. THIS PRODUCT USED WITH PIN-HEADER.
 1. BUTTON COLOR : REFER TO TABLE.

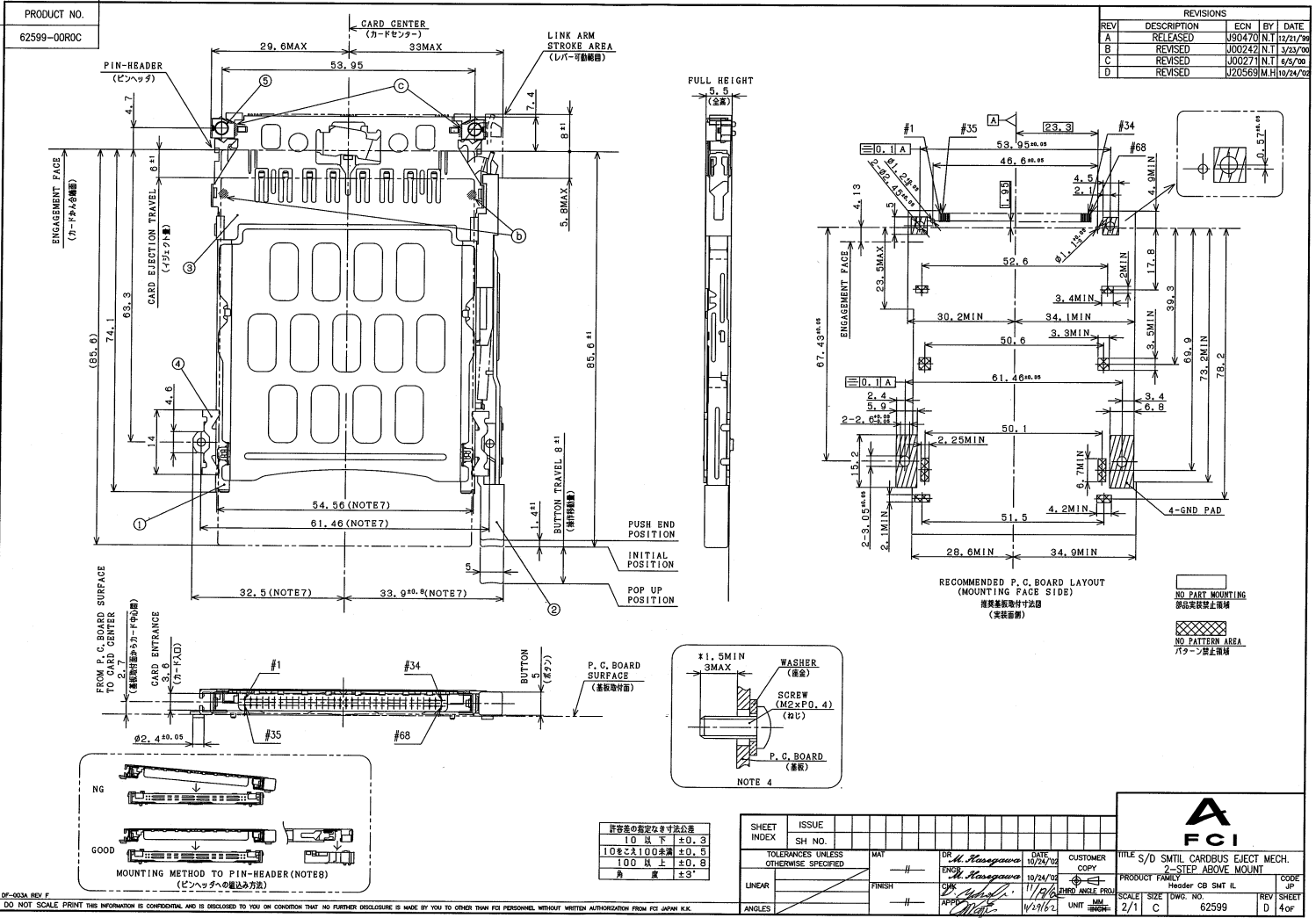
NOTE

⑥	COVER	1	STAINLESS STEEL		
⑤	SPECIAL SPACER	2	ZINC ALLOY		
④	SPACER	2	STEEL	ZINC PLATING	
③	SHROUD	1	COPPER ALLOY	CONTACT AREA : GOLD OVER NICKEL	
②	BUTTON	1	ABS		UL94HB
①	CASE	2	STAINLESS STEEL		
NO	DESCRIPTION	QTY	MATERIAL	FINISH	REMARKS

02-003A REV F
 DO NOT SCALE PRINT THIS INFORMATION IS CONFIDENTIAL AND IS DISCLOSED TO YOU ON CONDITION THAT NO FURTHER DISCLOSURE IS MADE BY YOU TO OTHER THAN FCI PERSONNEL WITHOUT WRITTEN AUTHORIZATION FROM FCI JAPAN K.K.

SHEET INDEX	ISSUE SH NO.	F	D	D	D	B												
	1	2	3	4	5	6												
TOLERANCES UNLESS OTHERWISE SPECIFIED		MAX		FOR		DATE		CUSTOMER		TITLE S/D		SMITH CARBUS EJECT MECH.		2-STEP ABOVE MOUNT		CODE		
SEE NOTE		M. Kasagawa		10/24/02		COPY		PRODUCT FAMILY		Header CB SMT IL		REV		F		1 of 6		
LINEAR	FINISH	—		M. Kasagawa		11/10/02		UNIT		SCALE		SIZE		TWC. NO.		62599		
ANGLES				M. Kasagawa		11/19/02		UNIT		SCALE		SIZE		TWC. NO.		62599		

PDM: Rev:F STATUS:Released Printed: Feb 10, 2006



REVISIONS				
REV	DESCRIPTION	ECN	BY	DATE
A	RELEASED	U90470	N.T.	12/21/99
B	REVISED	J00242	N.T.	3/23/00
C	REVISED	J00271	N.T.	6/5/00
D	REVISED	U20569	M.H.	10/24/02

許容差の範囲	公差
10以下	±0.3
10以上100未満	±0.5
100以上	±0.8
角	±3°

SHEET INDEX	ISSUE SH NO.	TOLERANCES UNLESS OTHERWISE SPECIFIED	MAY	OR H. Hasegawa	DATE 10/24/02	CUSTOMER COPY	FILE S/D	SMITH CARDBUS EJECT MECH.
LINEAR			—	H. Hasegawa	10/24/02		Header GB SMT IL	
ANGLES			—	APP	11/12/02		2-STEP ABOVE MOUNT	

FCI

PRODUCT FAMILY: Header GB SMT IL
 SCALE: 2/1 C
 SIZE: DWG. NO. 62599
 REV: D
 SHEET: 4 of 4

