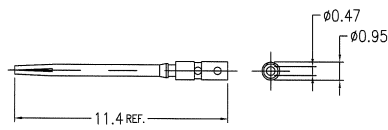
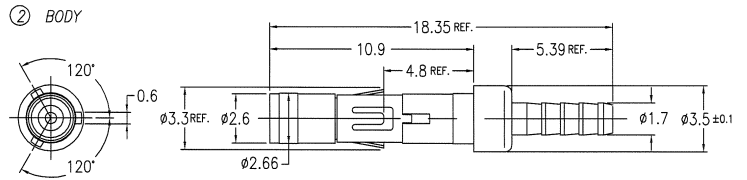


PRODUCT NO.	CABLES
62435-001	RG196A/U RG178B/U 0.8DS-PBE
-001LF	
62435-101	RG196A/U RG178B/U 0.8DS-PBE
-101LF	

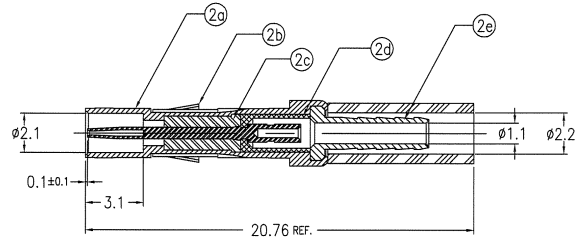
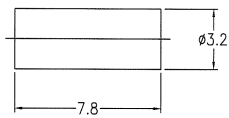
① INNER CONTACT



② BODY



③ CRIMP SLEEVE



AFTER ASSY

NOTES

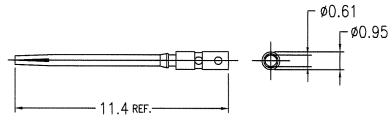
- PULL OUT FOR OF CENTER CONTACT MUST BE 0.2N MIN. / 0.8N MAX.
- ASSEMBLE PRODUCT WITH TOOL HT430 USE INSERTS EPL 193460-001
- FOR LEAD FREE P/N, THE PRODUCT MEET EUROPEAN UNION DIRECTIVES AND OTHER COUNTRY REGULATIONS AS DESCRIBED IN GS-22-008
- THE PRODUCT IS NOT INTENDED TO BE EXPOSED TO A MANUFACTURING SOLDER PROCESS.

No.	DESCRIPTION	MATERIAL	PLATING
①	INNER CONTACT	BERYLLIUM COPPER	Au 1.27um MIN. (FOR -001) Au 0.8um MIN. (FOR -101)
②	BODY		
②a	SHELL	BRASS	Au 1.27um MIN. (FOR -001) Au 0.8um MIN. (FOR -101)
②b	SPRING CLIP	BERYLLIUM COPPER	Ni 1.27um MIN.
②c	FRONT INSULATOR	PTFE	
②d	REAR INSULATOR	PTFE	
②e	FERRULE	BRASS	Au 0.05um MIN.
③	CRIMP SLEEVE	BRASS	Au 0.05um MIN. (FOR -001) Ni 1.27um MIN. (FOR -101)

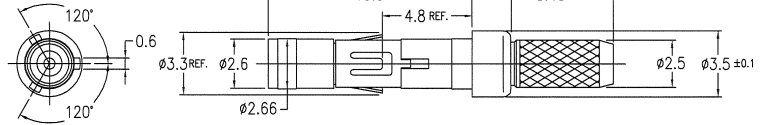
ltr	description	ecn no	dr	date	surface	tolerance	projection	product family	CODE
D	REVISED	J00331	Y.K	5/10/00	ISO 1302	ISO 406 ISO 1101	MM	METRAL	JP
E	REVISED	J00951	Y.K	12/12/00	angles	0.XX ±0.2	MM	METRAL MINICOAX CONTACT KIT	
F	REVISED	J10393	Y.K	7/6/01	linear	0.XXX ±0.2	scale 5:1	FEMALE SOLDER-TO-WIRE	
G	REVISED	J20204	Y.K	4/10/02	dr	Y.KODAIRA 1/28/99		dwg no	sheet 1 of 8 size
H	REVISED	J03-0172	Y.K	4/10/03	enrg	S.OKUDAIRA 1/22/07		62435	A3
J	REVISED	J05-0670	T.S	10/21/05	chr	K. Shiroki 1/21/07			
K	REVISED	J07-0039	S.O	1/22/07	appd	S. M. M. 1/22/07		type	Customer Drawing
sheet index	revision	K	F	E	D	C	C		Rev.
	sheet	1	2	3	4	5	6	7	8

PRODUCT NO.	CABLES
62435-002	RG188A/U
-002LF	RG316/U
62435-102	RG188A/U
-102LF	RG316/U

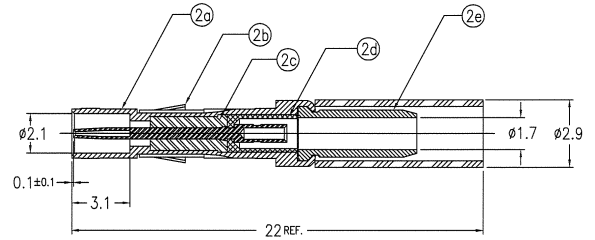
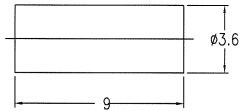
① INNER CONTACT



② BODY



③ CRIMP SLEEVE



AFTER ASSY

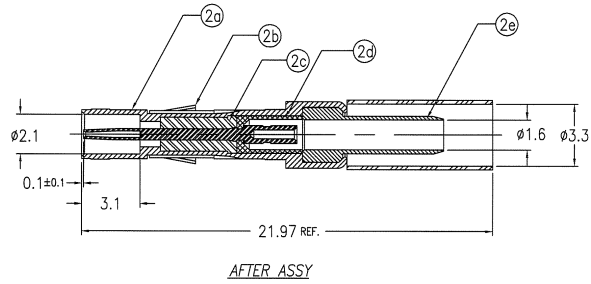
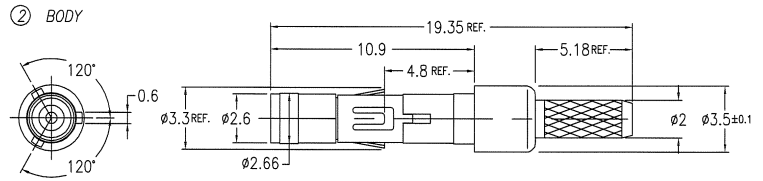
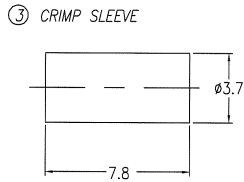
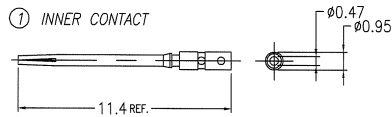
NOTES

- PULL OUT FOR OF CENTER CONTACT MUST BE 0.2N MIN. / 0.8N MAX.
- ASSEMBLE PRODUCT WITH TOOL HT430 USE INSERTS EPL 193460-001
- FOR LEAD FREE P/N, THE PRODUCT MEET EUROPEAN UNION DIRECTIVES AND OTHER COUNTRY REGULATIONS AS DESCRIBED IN GS-22-008
- THE PRODUCT IS NOT INTENDED TO BE EXPOSED TO A MANUFACTURING SOLDER PROCESS.

No.	DESCRIPTION	MATERIAL	
①	INNER CONTACT	BERYLLIUM COPPER	Au 1.27um MIN. (FOR -002) Au 0.8um MIN. (FOR -102)
②	BODY		
②a	SHELL	BRASS	Au 1.27um MIN. (FOR -002) Au 0.8um MIN. (FOR -102)
②b	SPRING CLIP	BERYLLIUM COPPER	Ni 1.27um MIN.
②c	FRONT INSULATOR	PTFE	
②d	REAR INSULATOR	PTFE	
②e	FERRULE	BRASS	Au 0.05um MIN.
③	CRIMP SLEEVE	BRASS	Au 0.05um MIN. (FOR -002) Ni 1.27um MIN. (FOR -102)

mat'l. code	---	surface	ISO 1302	tolerance	ISO 406	projection	product family	METRAL	CODE	JP
ltr	description	ecn no	dr	date	tolerances unless otherwise specified	MM	title			
A	REVISED	J90110	Y.K	3/31/99	angles	0.XX ±0.2	METRAL MINICOAX CONTACT KIT			
B	REVISED	J00062	Y.K	1/21/00	linear	0.XX ±0.2	FEMALE SOLDER-TO-WIRE			
C	REVISED	J00331	Y.K	5/10/00	0°±3'	0.XXX ±0.2	scale 5:1			
D	REVISED	J20204	Y.K	4/10/02	dr	Y.KODAIRA	3/31/99	dwg no	sheet 2 of	size
E	REVISED	J05-0670	T.S	10/21/05	enrg	S.OKUDAIRA	1/22/07	62435	A3	
F	REVISED	J07-0039	S.O	1/22/07	chr	K. Atsuya	1/22/07	type	Customer Drawing	Rev.
sheet index	revision sheet									F

PRODUCT NO.	CABLES	CABLES
62435-003	DOUBLE SHIELDED TYPE M17/152-0001(HARBOUR INDUSTRIES)	
-003LF		
62435-103	DOUBLE SHIELDED TYPE M17/152-0001(HARBOUR INDUSTRIES)	
-103LF		



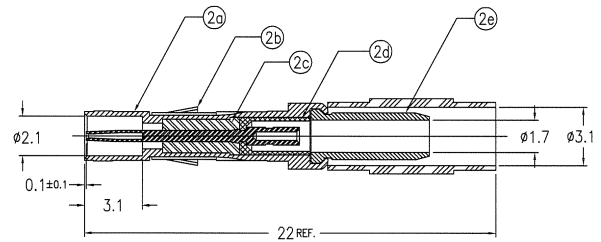
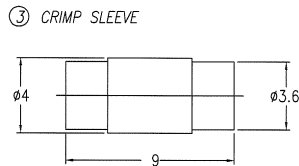
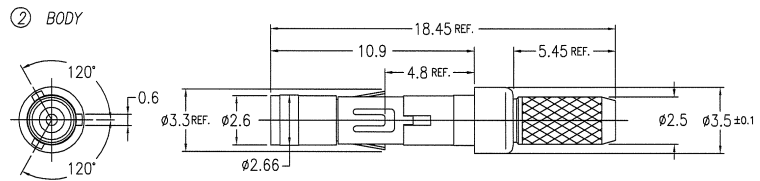
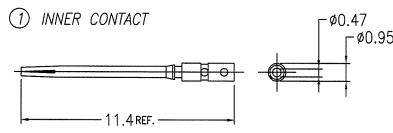
No.	DESCRIPTION	MATERIAL	PLATING
①	INNER CONTACT	BERYLLIUM COPPER	Au 1.27um MIN. (FOR -003) Au 0.8um MIN. (FOR -103)
②	BODY		
②a	SHELL	BRASS	Au 1.27um MIN. (FOR -003) Au 0.8um MIN. (FOR -103)
②b	SPRING CLIP	BERYLLIUM COPPER	Ni 1.27um MIN.
②c	FRONT INSULATOR	PTFE	
②d	REAR INSULATOR	PTFE	
②e	FERRULE	BRASS	Au 0.05um MIN.
③	CRIMP SLEEVE	BRASS	Au 0.05um MIN. (FOR -003) Ni 1.27um MIN. (FOR -103)

NOTES

- PULL OUT FOR OF CENTER CONTACT MUST BE 0.2N MIN. / 0.8N MAX.
- ASSEMBLE PRODUCT WITH TOOL HT430 USE INSERTS EPL 193460-001
- FOR LEAD FREE P/N, THE PRODUCT MEET EUROPEAN UNION DIRECTIVES AND OTHER COUNTRY REGULATIONS AS DESCRIBED IN GS-22-008
- THE PRODUCT IS NOT INTENDED TO BE EXPOSED TO A MANUFACTURING SOLDER PROCESS.

mat'l. code	---	surface	ISO 1302	tolerance	ISO 406	projection	product family	METRAL	CODE	JP
ltr	description	ecm no	dr	date	tolerances unless otherwise specified	angles	linear	0.X	±0.2	MM
A	RELEASED	J90036	Y.K	1/28/99				0.XXX	±0.2	scale 5:1
B	REVISED	J00062	Y.K	1/21/00						
C	REVISED	J00331	Y.K	5/10/00						
D	REVISED	J05-0670	T.S	10/21/05	dr	Y.KODAIRA	1/28/99			
E	REVISED	J07-0039	S.O	1/22/07	enrg	S.OKUDAIRA	1/22/07			
					chr	R. A. ...	1/22/07			
					app	J. ...	1/22/07			
sheet	revision									
index	sheet									

PRODUCT NO.	CABLES
62435-004	1.5C-XV (SUMITOMO)
-004LF	1.5C-QEV.CW (FUJIKURA)
62435-104	1.5C-XV (SUMITOMO)
-104LF	1.5C-QEV.CW (FUJIKURA)



AFTER ASSY

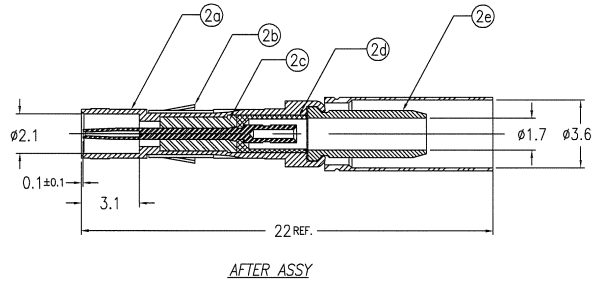
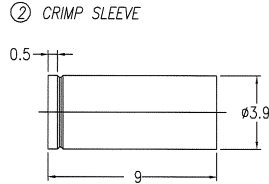
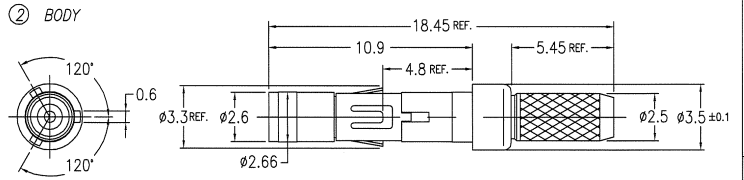
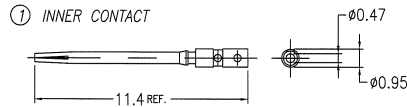
No.	DESCRIPTION	MATERIAL	PLATING
①	INNER CONTACT	BERYLLIUM COPPER	Au 1.27um MIN. (FOR -004) Au 0.8um MIN. (FOR -104)
②	BODY		
②a	SHELL	BRASS	Au 1.27um MIN. (FOR -004) Au 0.8um MIN. (FOR -104)
②b	SPRING CLIP	BERYLLIUM COPPER	Ni 1.27um MIN.
②c	FRONT INSULATOR	PTFE	
②d	REAR INSULATOR	PTFE	
②e	FERRULE	BRASS	Au 0.05um MIN.
③	CRIMP SLEEVE	BRASS	Au 0.05um MIN. (FOR -004) Ni 1.27um MIN. (FOR -104)

NOTES

- PULL OUT FOR OF CENTER CONTACT MUST BE 0.2N MIN. / 0.8N MAX.
- ASSEMBLE PRODUCT WITH TOOL HT430 USE INSERTS EPL 193460-001
- FOR LEAD FREE P/N, THE PRODUCT MEET EUROPEAN UNION DIRECTIVES AND OTHER COUNTRY REGULATIONS AS DESCRIBED IN GS-22-008
- THE PRODUCT IS NOT INTENDED TO BE EXPOSED TO A MANUFACTURING SOLDER PROCESS.

mat'l. code		surface		ISO 1302	tolerance	ISO 406	ISO 1101	projection	product family	CODE
ltr	description	ecm no	dr	date	tolerances unless otherwise specified	linear	0.XX ±0.2	MM	METRAL	JP
A	RELEASED	J90036	Y.K	1/28/99	angles	0°±3'	0.XXX ±0.2	scale 5:1	METRAL MINICOAX CONTACT KIT	
B	REVISED	J00062	Y.K	1/21/00					FEMALE SOLDER-TO-WIRE	
C	REVISED	J00331	Y.K	5/10/00						
D	REVISED	J05-0670	T.S	10/21/05	dr	Y.KODAIRA	1/28/99		dwg no	sheet 4 of size
E	REVISED	J07-0039	S.O	1/22/07	enrg	S.OKUDAIRA	1/22/07		62435	A3
					chr	R. Shewji	1/22/07		Customer Drawing	Rev.
					apbd	S. Okudaira	1/22/07			E
sheet index	revision sheet									

PRODUCT NO.	CABLES
62435-005	1.5C-XW (SUMITOMO)
-005LF	
62435-105	1.5C-XW (SUMITOMO)
-105LF	



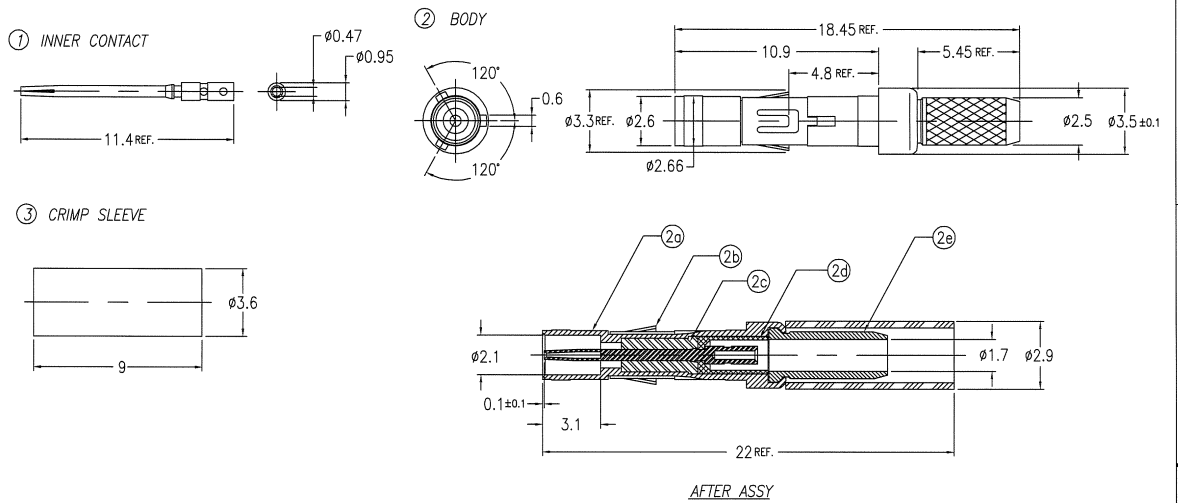
No.	DESCRIPTION	MATERIAL	PLATING
①	INNER CONTACT	BERYLLIUM COPPER	Au 1.27um MIN. (FOR -005) Au 0.8um MIN. (FOR -105)
②	BODY		
②a	SHELL	BRASS	Au 1.27um MIN. (FOR -005) Au 0.8um MIN. (FOR -105)
②b	SPRING CLIP	BERYLLIUM COPPER	Ni 1.27um MIN.
②c	FRONT INSULATOR	PTFE	
②d	REAR INSULATOR	PTFE	
②e	FERRULE	BRASS	Au 0.05um MIN.
③	CRIMP SLEEVE	BRASS	Au 0.05um MIN. (FOR -005) Ni 1.27um MIN. (FOR -105)

NOTES

- PULL OUT FOR OF CENTER CONTACT MUST BE 0.1N MIN. / 0.8N MAX.
- ASSEMBLE PRODUCT WITH TOOL HT430 USE INSERTS EPL 193460-001
- FOR LEAD FREE P/N, THE PRODUCT MEET EUROPEAN UNION DIRECTIVES AND OTHER COUNTRY REGULATIONS AS DESCRIBED IN GS-22-008
- THE PRODUCT IS NOT INTENDED TO BE EXPOSED TO A MANUFACTURING SOLDER PROCESS.

mat'l. code	---	surface	ISO 1302	tolerance	ISO 406	projection	product family	METRAL	CODE	JP		
ltr	description	ecn no	dr	date	tolerances unless otherwise specified	angles	linear	0.XX ±0.2	MM	title		
A	RELEASED	J00062	Y.K	1/21/00	0°±3'	linear	0.XX ±0.2	0.XXX ±0.2	scale 5:1	METRAL MINICOAX CONTACT KIT FEMALE SOLDER-TO-WIRE		
B	REVISED	J00331	Y.K	5/10/00						dwg no	sheet 5 of	size
C	REVISED	J05-0670	T.S	10/21/05						62435	A3	
D	REVISED	J07-0039	S.O	1/22/07	dr	Y.KODAIRA	1/21/00			type	Customer Drawing	Rev.
					enr	S.OKUDAIRA	1/22/07					D
					chr	R. Aborigo	1/22/07					
					appd	S. Okuda	1/22/07					
sheet	revision											
index	sheet											

PRODUCT NO.	CABLES
62435-006	RG187A/U RG179B/U
-006LF	
62435-106	RG187A/U RG179B/U
-106LF	



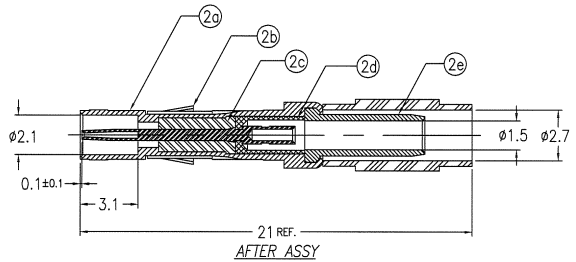
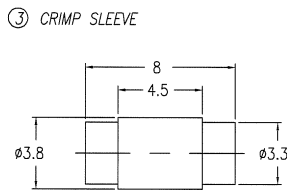
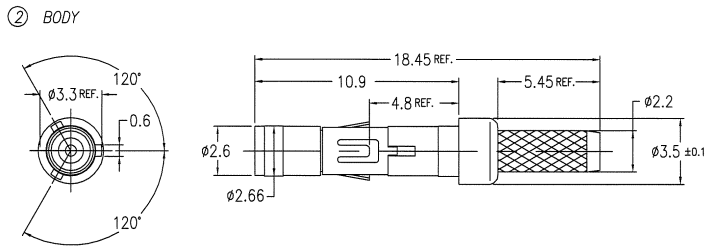
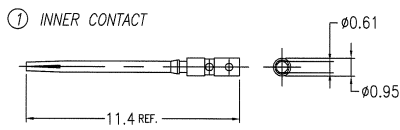
No.	DESCRIPTION	MATERIAL	PLATING
①	INNER CONTACT	BERYLLIUM COPPER	Au 1.27µm MIN. (FOR -006) Au 0.8µm MIN. (FOR -106)
②	BODY		
②a	SHELL	BRASS	Au 1.27µm MIN. (FOR -006) Au 0.8µm MIN. (FOR -106)
②b	SPRING CLIP	BERYLLIUM COPPER	Ni 1.27µm MIN.
②c	FRONT INSULATOR	PTFE	
②d	REAR INSULATOR	PTFE	
②e	FERRULE	BRASS	Au 0.05µm MIN.
③	CRIMP SLEEVE	BRASS	Au 0.05µm MIN. (FOR -006) Ni 1.27µm MIN. (FOR -106)

NOTES

- PULL OUT FOR OF CENTER CONTACT MUST BE 0.2N MIN. / 0.8N MAX.
- ASSEMBLE PRODUCT WITH TOOL HT430 USE INSERTS EPL 193460-001
- FOR LEAD FREE P/N, THE PRODUCT MEET EUROPEAN UNION DIRECTIVES AND OTHER COUNTRY REGULATIONS AS DESCRIBED IN GS-22-008
- THE PRODUCT IS NOT INTENDED TO BE EXPOSED TO A MANUFACTURING SOLDER PROCESS.

mat'l. code		surface		ISO 1302	tolerance	ISO 406	projection	product family	METRAL	CODE	JP
A		RELEASED	J00951	Y.K	12/12/00	tolerances unless otherwise specified	MM	title			
B		REVISED	J05-0670	T.S	10/21/05	angles	linear	METRAL MINICOAX CONTACT KIT			
C		REVISED	J07-0039	S.O	1/22/07	0°±3'	0.XX ±0.2 0.XXX ±0.2	FEMALE SOLDER-TO-WIRE			
				dr	Y.KODAIRA	12/12/00	scale 5:1	dwg no		sheet 6 of	size
				enrg	S.OKUDAIRA	1/22/07		62435			A3
				chr	R. Shigeta	1/22/07		type		Customer Drawing	Rev.
				appd	S. Madan	1/22/07					C
sheet	revision										
index	sheet										

PRODUCT NO.	CABLES
62435-007	1.5DS-PBP
-007LF	
62435-107	1.5DS-PBP
-107LF	



No.	DESCRIPTION	MATERIAL	PLATING
①	INNER CONTACT	BERYLLIUM COPPER	Au 1.27um MIN. (FOR -001) Au 0.8um MIN. (FOR -101)
②	BODY		
②a	SHELL	BRASS	Au 1.27um MIN. (FOR -001) Au 0.8um MIN. (FOR -101)
②b	SPRING CLIP	BERYLLIUM COPPER	Ni 1.27um MIN.
②c	FRONT INSULATOR	PTFE	
②d	REAR INSULATOR	PTFE	
②e	FERRULE	BRASS	Au 0.05um MIN.
③	CRIMP SLEEVE	BRASS	Au 0.05um MIN. (FOR -001) Ni 1.27um MIN. (FOR -101)

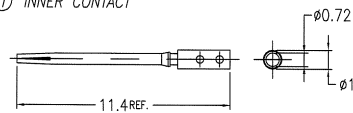
NOTES

- PULL OUT FOR OF CENTER CONTACT MUST BE 0.2N MIN. / 0.8N MAX.
- ASSEMBLE PRODUCT WITH TOOL HT430 USE INSERTS EPL 193460-001
- FOR LEAD FREE P/N, THE PRODUCT MEET EUROPEAN UNION DIRECTIVES AND OTHER COUNTRY REGULATIONS AS DESCRIBED IN GS-22-008
- THE PRODUCT IS NOT INTENDED TO BE EXPOSED TO A MANUFACTURING SOLDER PROCESS.

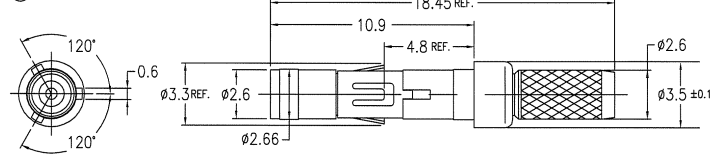
mat'l. code	---	surface	ISO 1302	tolerance	ISO 408	projection	product family	METRAL	CODE	JP
ltr	description	ecm no	dr	date	tolerances unless otherwise specified	angles	linear	0.XX ±0.2	0.XXX ±0.2	scale 5:1
A	RELEASED	J10393	Y.K	7/6/01						
B	REVISED	J05-0670	T.S	10/21/05						
C	REVISED	J07-0039	S.O	1/22/07						
dr	Y.KODAIRA			7/6/01						
enrg	S.OKUDAIRA			1/22/07						
chr	R. Shoji			1/22/07						
apbd	J. Boudreau			1/22/07						
sheet index	revision sheet									

PRODUCT NO.	CABLES
62435-108	1.5DS-xx, 1.5D-xx
-108LF	

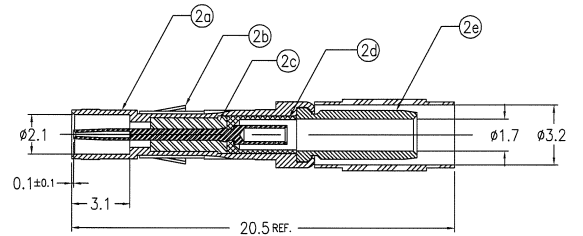
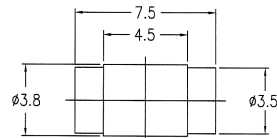
① INNER CONTACT



② BODY



③ CRIMP SLEEVE



AFTER ASSY

No.	DESCRIPTION	MATERIAL	PLATING
①	INNER CONTACT	BERYLLIUM COPPER	Au 0.8um MIN.
②	BODY		
②a	SHELL	BRASS	Au 0.8um MIN.
②b	SPRING CLIP	BERYLLIUM COPPER	Ni 1.27um MIN.
②c	FRONT INSULATOR	PTFE	
②d	REAR INSULATOR	PTFE	
②e	FERRULE	BRASS	Au 0.05um MIN.
③	CRIMP SLEEVE	BRASS	Ni 1.27um MIN.

NOTES

- PULL OUT FOR OF CENTER CONTACT MUST BE 0.2N MIN. / 0.8N MAX.
- ASSEMBLE PRODUCT WITH TOOL HT430 USE INSERTS EPL 193460-001
- FOR LEAD FREE P/N, THE PRODUCT MEET EUROPEAN UNION DIRECTIVES AND OTHER COUNTRY REGULATIONS AS DESCRIBED IN GS-22-008
- THE PRODUCT IS NOT INTENDED TO BE EXPOSED TO A MANUFACTURING SOLDER PROCESS.

mat'l. code	---	surface	ISO 1302	tolerance	ISO 408	projection	product family	METRAL	CODE	JP		
ltr	description	ecn no	dr	date	tolerances unless otherwise specified	angles	linear	0.XX ±0.2	MM	title		
A	RELEASED	J03-0172	Y.K	4/10/03	0°±3'	0°±3'	0.XXX ±0.2	scale 5:1		METRAL MINICOAX CONTACT KIT FEMALE SOLDER-TO-WIRE		
B	REVISED	J05-0670	T.S	10/21/05								
C	REVISED	J07-0039	S.O	1/22/07								
					dr	Y.KODAIRA	4/10/03			dwg no	sheet 8 of	size
					enrg	S.OKUDAIRA	1/22/07			62435		A3
					chr	R. Hirose	1/22/07			type	Customer Drawing	Rev.
					appd	S. Hirose	1/22/07					C
sheet	revision											
index	sheet											