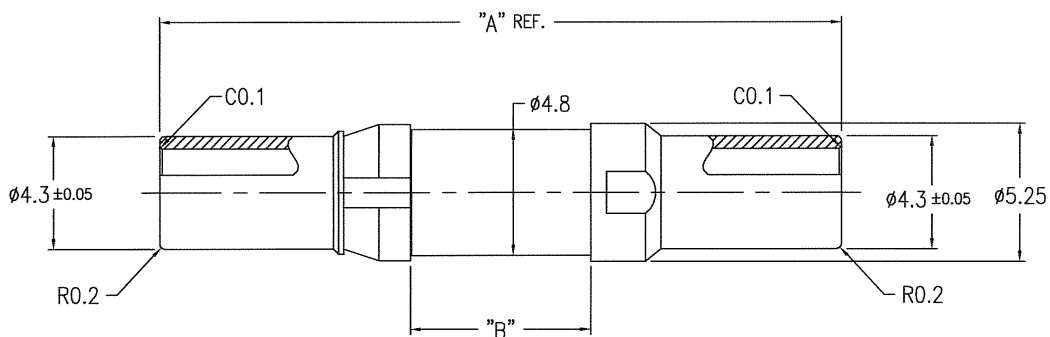


PRODUCT NO.	DIM "A"	DIM "B"	PCB THICKNESS
62364-101	26.1	6.9	2.4 ~ 2.9mm
62364-102	26.7	7.5	3.0 ~ 3.5mm
62364-103	28.5	9.3	4.8 ~ 5.1mm



- NOTE**
- ① MATERIAL
 INNER CONTACT : BeCu (C1720)
 RETAINER : BeCu (C1720)
 INSULATOR : PTFE
 OTHERS : BRASS (C3602)
- ② PLATING
 INNER CONTACT : Au 0.8μm MIN.
 OTHERS : Au 0.3μm MIN.
 (UNDER : Ni 1.27μm MIN.)

mat'l. code	surface	tolerance	projection	product family	CODE
---	ISO 1302	ISO 406	ISO 1101	METRAL	JP
itr	description	ecn no	dr	date	tolerances unless otherwise specified
A	RELEASED	J80421	Y.K	10/16/98	0.X ±0.3
B	REVISED	J10388	Y.K	7/3/01	0.XX ±0.3
C	REVISED	J10683	Y.K	11/8/01	0.XXX ±0.3
D	REVISED	J20160	Y.K	3/25/02	dr Y.KODAIRA 10/16/98
E	REVISED	J03-0309	Y.K	7/17/03	enrg S.OKUDAIRA 3/5/07
F	REVISED	J07-0030	S.O	1/18/07	chr R. Shoyu 2/14/07
G	REVISED	J07-0147	S.O	3/5/07	appd D. Nakano 3/16/07
sheet index	revision sheet	G	1		