

PRODUCT NO.  
61729

PRODUCT NUMBER CODE

61729- X 0 X X X P S LF

BASE PRODUCT NUMBER

HOUSING COLOR OPTION

0 - WHITE  
1 - BLACK

SHIELD OPTION

1 - FULL BACK  
2 - PARTIAL BACK  
S - FULL BACK (SPECIAL MATERIAL FOR 12,000 DURABILITY CYCLES)  
P - PARTIAL BACK (SPECIAL MATERIAL FOR 12,000 DURABILITY CYCLES)

TERMINAL PLATING OPTION

0 - 50u" NI UNDERPLATED  
30U" GXT CONTACT AREA  
100u" PURE TIN TAIL AREA  
1 - 50u" NI UNDERPLATED  
30U" GOLD CONTACT AREA  
100u" PURE TIN TAIL AREA

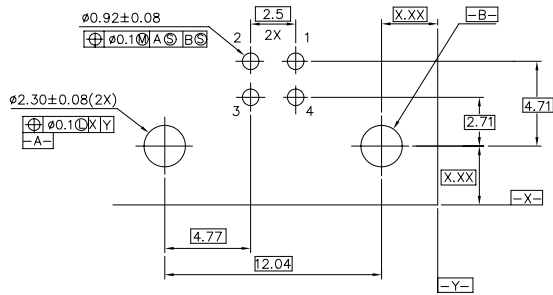
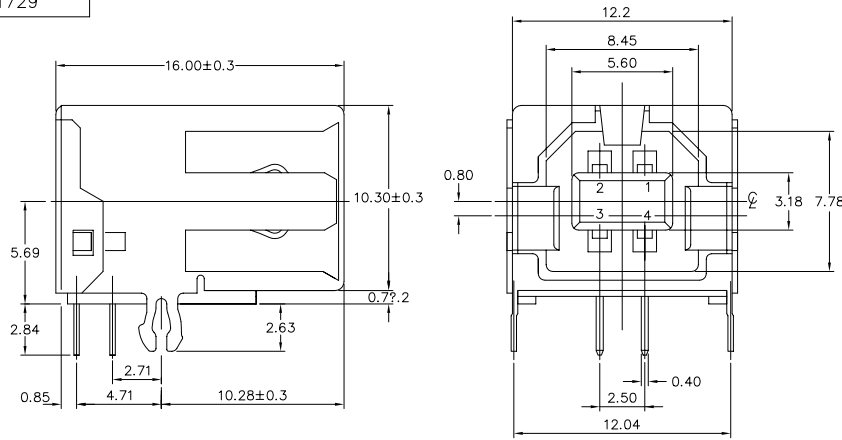
PACKAGING OPTION

B-TUBES  
R-TAPE & REEL

DATE CODE OPTION

ONLY FOR PANASONIC

LEAD FREE OPTION



P.C. BOARD LAYOUT

mat'l. code		tolerances unless otherwise specified		CUSTOMER COPY		FCJ	
ltr	ecm no	dr	date	linear	.0 ± 0.30	projection	title
S	N05-0242	PH	08/22/05		.00 ± 0.20		USB RECEPTACLE B TYPE
T	N06-0103	HB	04/15/06		.000± 0.10		
U	N08-0238	R.B	2008/11/03	angles	± 2'		
V	N08-0264	R.B	2008/12/08	dr	SHIRLEY HSU 03/03/97	MM/INCH	product family USB
				enr	R Y LIU 03/03/97	← →	code
				chr	R Y LIU 03/03/97	scale	size dwg no
				appd	JENN TSAO 03/03/97	4 : 1	61729
sheet index	revision sheet					A3	sheet 1 of 2

PDM: Rev:V

STATUS: Released

Printed: Jul 28, 2010

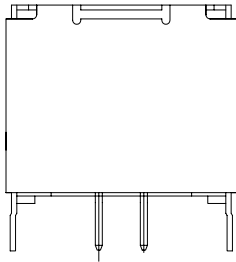
USE THIS DRAWING FOR REFERENCE ONLY. FOR THE LATEST REVISIONS, REFER TO THE DRAWING REVISION HISTORY.

FCJ

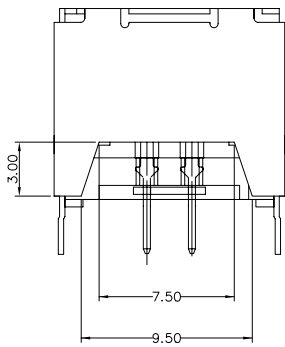
USE THIS DRAWING FOR REFERENCE ONLY. FOR THE LATEST REVISIONS, REFER TO THE DRAWING REVISION HISTORY.

D

PRODUCT NO.  
61729



TYPE "1" FULL BACK



TYPE "2" PARTIAL BACK

NOTES:

1. MATERIAL:  
SHIELD & CONTACTS: COPPER ALLOY  
HOUSING: UL 94V-0 THERMOPLASTIC. COLOR: SEE PRODUCT NUMBER CODE.
2. PLATING: SEE PRODUCT NUMBER CODE.  
SHIELD: BRIGHT TIN  
NICKEL UNDERPLATE.
3. DATUMS & BASIC DIMENSIONS TO BE DETERMINED BY CUSTOMER
4. RECOMMENDED BOARD THICKNESS IS 1.57 mm (.062)
5. PACKING STANDARD GS-14-920 WILL BE APPLIED FOR LEAD FREE P/N'S
6. FOR LEAD FREE P/N, THE PRODUCT MEET EUROPEAN UNION DIRECTIVES AND OTHER COUNTRY REGULATION AS DESCRIBED IN GS-22-008
7. FOR LEAD FREE P/N'S, THE HOUSING WILL WITHSTAND EXPOSURE TO 260°C PEAK TEMPERATURE FOR 40 SECONDS IN A CONVECTION, INFRO-RED OR VAPOR PHASE REFLOW OVEN.
8. THE PART CAN BE USED FOR PIP PROCESS.

mat'l. code		tolerances unless otherwise specified		CUSTOMER COPY	FCJ www.fcjconnect.com		
ltr	ecm no	dr	date	linear	.0 ± 0.20	projection	
v					.00 ± 0.10		
					.000 ± 0.05		
				angles	± 2°	MM/INCH ← → scale 5 : 1 A3	
		dr	SHIRLEY HSU 03/03/97				product family USB
		enr	R Y LIU 03/03/97				code
		chr	R Y LIU 03/03/97				size dwg no 61729
		appd	JENN TSAO 03/03/97			sheet 2 of 2	
sheet index	revision sheet						

PDM: Rev:V STATUS Released Printed: Jul 28, 2010 6

USE WITH APPROPRIATE REVISIONS. REVISIONS TO COMPONENTS, SEE THE LIST. PROPERTY OF FCJ CONNECT, INC. ALL RIGHTS RESERVED. FCJ CONNECT, INC.

USE WITH APPROPRIATE REVISIONS. REVISIONS TO COMPONENTS, SEE THE LIST. PROPERTY OF FCJ CONNECT, INC. ALL RIGHTS RESERVED. FCJ CONNECT, INC.