

PRODUCT NO.  
61729

PRODUCT NUMBER CODE

61729- X 0 X X X P S LF

BASE PRODUCT NUMBER

HOUSING COLOR OPTION

0 - WHITE  
1 - BLACK

SHIELD OPTION

1 - FULL BACK  
2 - PARTIAL BACK  
S - FULL BACK (SPECIAL MATERIAL FOR 12,000 DURABILITY CYCLES)  
P - PARTIAL BACK (SPECIAL MATERIAL FOR 12,000 DURABILITY CYCLES)

TERMINAL PLATING OPTION

0 - 50u" NI UNDERPLATED  
30U" GXT CONTACT AREA  
100u" PURE TIN TAIL AREA  
1 - 50u" NI UNDERPLATED  
30U" GOLD CONTACT AREA  
100u" PURE TIN TAIL AREA

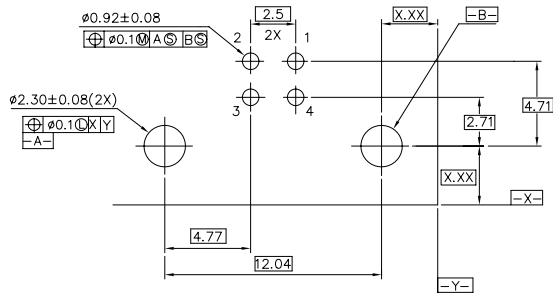
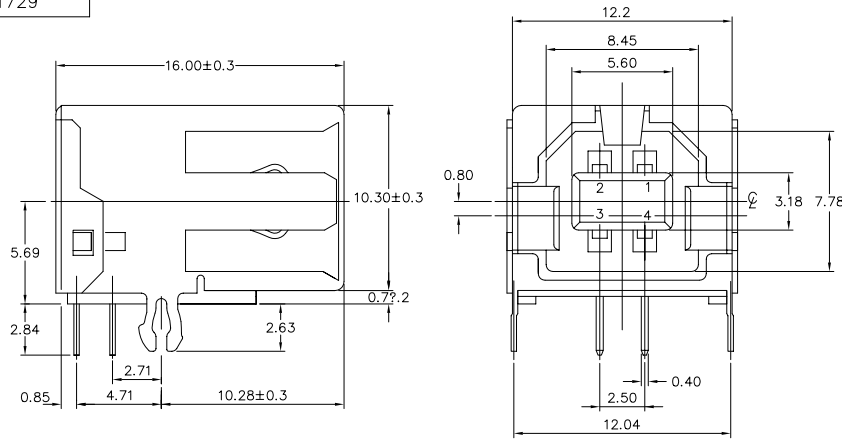
PACKAGING OPTION

B-TUBES  
R-TAPE & REEL

DATE CODE OPTION

ONLY FOR PANASONIC

LEAD FREE OPTION



P.C. BOARD LAYOUT

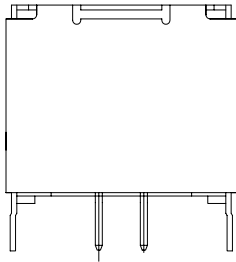
| mat'l. code |                | tolerances unless otherwise specified |            | CUSTOMER COPY |                      | FCI        |                       |
|-------------|----------------|---------------------------------------|------------|---------------|----------------------|------------|-----------------------|
| ltr         | ecm no         | dr                                    | date       | linear        | .0 ± 0.30            | projection | title                 |
| S           | N05-0242       | PH                                    | 08/22/05   |               | .00 ± 0.20           |            | USB RECEPTACLE B TYPE |
| T           | N06-0103       | HB                                    | 04/15/06   |               | .000± 0.10           |            |                       |
| U           | N08-0238       | R.B                                   | 2008/11/03 | angles        | ± 2'                 |            |                       |
| V           | N08-0264       | R.B                                   | 2008/12/08 | dr            | SHIRLEY HSU 03/03/97 | MM/INCH    | product family USB    |
|             |                |                                       |            | enr           | R Y LIU 03/03/97     | ← →        | code                  |
|             |                |                                       |            | chr           | R Y LIU 03/03/97     | scale      | size dwg no           |
|             |                |                                       |            | appd          | JENN TSAO 03/03/97   | 4 : 1      | 61729                 |
| sheet index | revision sheet |                                       |            |               |                      |            | sheet 1 of 2          |

PDM: Rev:V

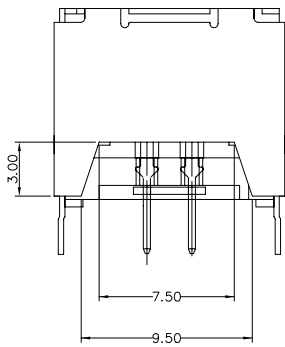
STATUS Released

Printed: Jul 28, 2010 6

PRODUCT NO.  
61729



TYPE "1" FULL BACK



TYPE "2" PARTIAL BACK

NOTES:

1. MATERIAL:  
SHIELD & CONTACTS: COPPER ALLOY  
HOUSING: UL 94V-0 THERMOPLASTIC. COLOR: SEE PRODUCT NUMBER CODE.
2. PLATING: SEE PRODUCT NUMBER CODE.  
SHIELD: BRIGHT TIN  
NICKEL UNDERPLATE.
3. DATUMS & BASIC DIMENSIONS TO BE DETERMINED BY CUSTOMER
4. RECOMMENDED BOARD THICKNESS IS 1.57 mm (.062)
5. PACKING STANDARD GS-14-920 WILL BE APPLIED FOR LEAD FREE P/N'S
6. FOR LEAD FREE P/N, THE PRODUCT MEET EUROPEAN UNION DIRECTIVES AND OTHER COUNTRY REGULATION AS DESCRIBED IN GS-22-008
7. FOR LEAD FREE P/N'S, THE HOUSING WILL WITHSTAND EXPOSURE TO 260°C PEAK TEMPERATURE FOR 40 SECONDS IN A CONVECTION, INFRARED OR VAPOR PHASE REFLOW OVEN.
8. THE PART CAN BE USED FOR PIP PROCESS.

|             |                |                                       |                      |               |  |                |                                |
|-------------|----------------|---------------------------------------|----------------------|---------------|--|----------------|--------------------------------|
| mat'l. code |                | tolerances unless otherwise specified |                      | CUSTOMER COPY | FCJ<br>www.fcjconnect.com              |                |                                |
| ltr         | ecr no         | dr                                    | date                 | linear        | .0 ± 0.20<br>.00 ± 0.10<br>.000 ± 0.05 | projection     | title<br>USB RECEPTACLE B TYPE |
| v           |                |                                       |                      |               |  |                |                                |
|             |                |                                       |                      | angles        | ± 2°                                   |                |                                |
|             |                | dr                                    | SHIRLEY HSU 03/03/97 | MM/INCH       |  | product family | USB                            |
|             |                | enr                                   | R Y LIU 03/03/97     | ←             |  | size           | dwg no                         |
|             |                | chr                                   | R Y LIU 03/03/97     | scale         | 5 : 1                                  | A3             | 61729                          |
|             |                | appd                                  | JENN TSAO 03/03/97   |               |  |                | sheet                          |
| sheet index | revision sheet |                                       |                      |               |  |                | 2 of 2                         |

PDM: Rev:V STATUS: Released Printed: Jul 28, 2010 6

USE WITH APPROPRIATE REVISIONS. REVISIONS TO COMPONENTS, SEE THE 3D MODEL FOR THE LATEST REVISIONS. PROPERTY OF FCJ CONNECT, INC.

USE WITH APPROPRIATE REVISIONS. REVISIONS TO COMPONENTS, SEE THE 3D MODEL FOR THE LATEST REVISIONS. PROPERTY OF FCJ CONNECT, INC.