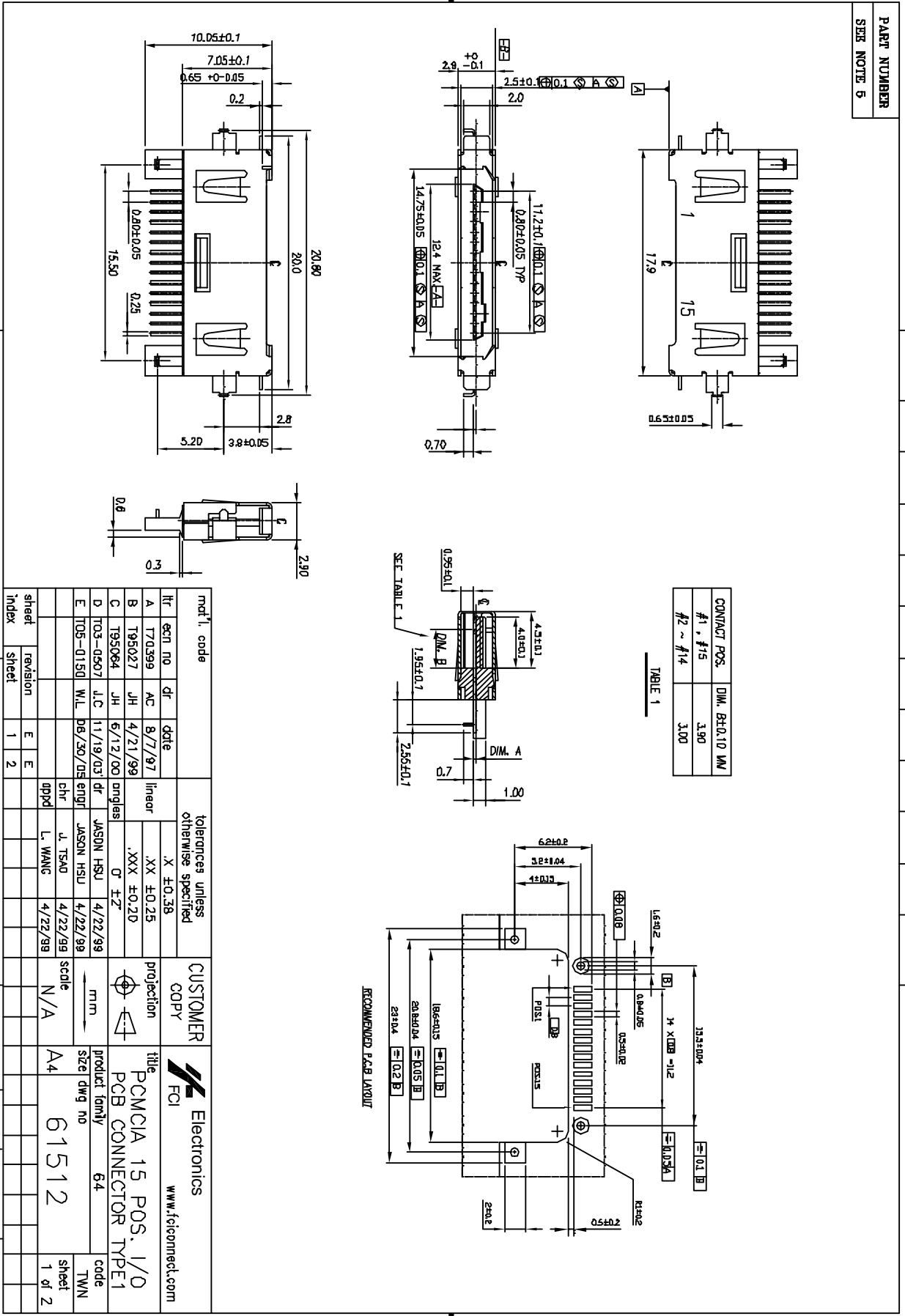


PART NUMBER
SER NOTE 5

form no. 7530-001-103



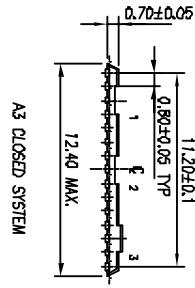
mat'l. code	tolerances unless otherwise specified	CUSTOMER COPY	title	code
lit. eqn no. dr. date	.XX ±0.25 .XXX ±0.20 0" ±.2"	projection	PCMCIA 15 POS. I/O PCB CONNECTOR TYPE1	TWN
A T70399 AC 8/7/87	X ±0.38	scale	product family 64	1 of 2
B T95027 JH 4/21/98		N/A	size dwg no 61512	
C T95084 JH 6/12/00				
D T03-0507 JLC 11/19/03				
E T05-0150 W.L. DG/30/DSE enjg				
sheet revision	index	sheet	index	sheet

sheet code
22526

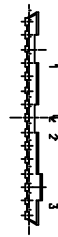


B

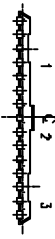
A



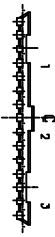
A3 CLOSED SYSTEM



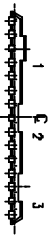
B3 TYPE



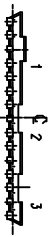
A2 LAN OPEN SYSTEM



B2 TYPE



A1 TYPE



B1 TYPE

FIGURE 1

1 2

3

4

NOTE:

1. MATERIAL:
 - INSULATOR: LCP UL94V-0.
 - CONTACT: P.H. CR5191.
 - SHIELDING: STAINLESS STEEL.
 - PLATING: GOLD PLATING UNDER 50µ OVER Pd/N 40µ ON CONTACT AREA.
 - ABOVE 50µ IS AS ORDERING DATA DE NOTES.
 - TIN/LEAD 100µ IN SOLDERING TAIL.
 - NICKLE PLATE 50µ ALL OVER.
2. ELECTRONIC:
 - VOLTAGE: 100V AC
 - CURRENT RATE: 0.05A PER CONTACT
 - OPERATING TEMPERATURE: -10°C ~ +70°C
 - DURABILITY: 5000 CYCLES MIN. (GARSH ENVIRONMENT)
 - 10000 CYCLES MIN. (OFFICE ENVIRONMENT)
3. MECHANICAL:
 - INSERTION FORCE: 2kg MAX.
 - WITHDRAW FORCE: 0.3 kg MIN.
 - LATCH FULL LOCK: 5.5 kg MAX.
4. POLARIZING KEY TYPE AS FIG.1 SHOWN ON LEFT VIEW.

ORDERING DATA:

61512- X X X X

PCB OFFSET
 1: 0.30 MM
 2: 0.60 MM

POLARIZING KEY OPTION:

- 0: A3 TYPE AS FIG.1
- 1: A2 TYPE AS FIG.1
- 2: A1 TYPE AS FIG.1
- 3: B3 TYPE AS FIG.1
- 4: B2 TYPE AS FIG.1
- 5: B1 TYPE AS FIG.1

TABLE 2

PRODUCT NO.	DM.	ADD/IS	DM.	PACKAGING QUANTITIES	MARKING
61512-0X1T	0.3	1000/REEL	0.6	1000/REEL	5000
61512-0X2T	0.6	1000/REEL	0.3	100/TRAY	5000
61512-0X1S	0.3	100/TRAY	0.6	100/TRAY	4500
61512-0X2S	0.6	100/TRAY	0.6	100/TRAY	4500

PLATING:
 0: GOLD FLASH OVER 40µ Pd-NI PLATED.
 1: 10µ GOLD WITHOUT Pd-NI PLATED.
 5: 15µ GOLD WITHOUT Pd-NI PLATED.

mat'l. code		tolerances unless otherwise specified		CUSTOMER COPY		title	
ltr	ec'n no	dr	date	linear	projection	scale	product family
E				.XX ±0.25	mm	N/A	64
				.XXX ±0.20	mm		
				angles 0° ±2°			
				engr JASON HSU 4/22/99			
				chr J. TSAO 4/22/99			
				pppl L. WANG 4/22/99			
sheet	revision						
index	sheet						

FCI Electronics
 www.fciconnect.com

PCMCIA 15 POS. I/O
 PCB CONNECTOR TYPE1

61512

code TWIN
 sheet 2 of 2

form no. 7530-001-103

1

2

3

4

case code
 225226

B

A