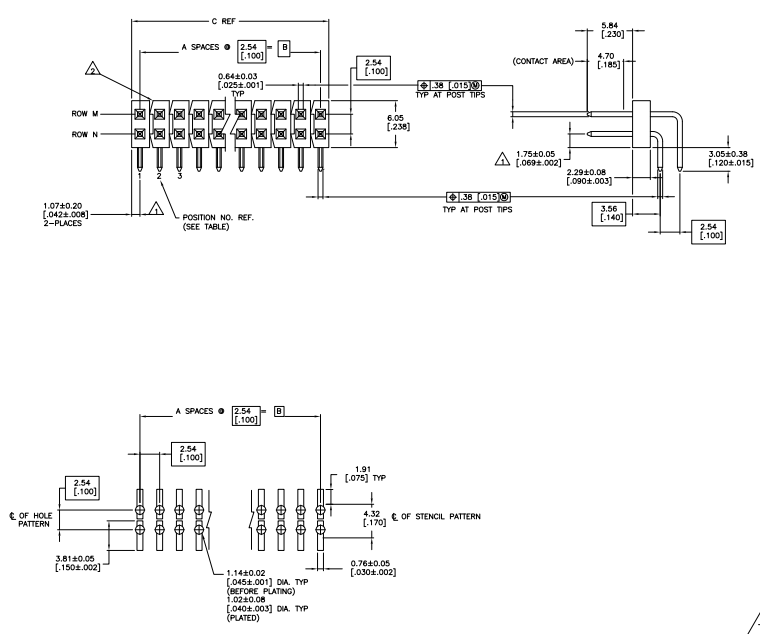


THIS DRAWING IS UNPUBLISHED
 © 2008 BY TYS ELECTRONICS CORPORATION. ALL RIGHTS RESERVED.

REV	DATE	DESCRIPTION	BY	CHK	APP
C	02/03/05	17MMHS	BSV	JLG	
C1		REVISED PER ECD-09-024717	090909	KK	AEG



REV	DATE	DESCRIPTION	BY	CHK	APP
1					
2					
3					
4					
5					
6					
7					
8					
9					
10					
11					
12					
13					
14					
15					
16					
17					
18					
19					
20					
21					
22					
23					
24					
25					
26					
27					
28					
29					
30					
31					
32					
33					
34					
35					
36					
37					
38					
39					
40					
41					
42					
43					
44					
45					
46					
47					
48					
49					
50					
51					
52					
53					
54					
55					
56					
57					
58					
59					
60					
61					
62					
63					
64					
65					
66					
67					
68					
69					
70					
71					
72					
73					
74					
75					
76					
77					
78					
79					
80					
81					
82					
83					
84					
85					
86					
87					
88					
89					
90					
91					
92					
93					
94					
95					
96					
97					
98					
99					
100					

- △ THE NOTED DIMENSIONS APPLY AT THE INTERSECTION OF THE POST AND HOUSING.
- △ BREAKAWAY NOTCH ANGLE CAN BE ORIENTED TO THE RIGHT (AS SHOWN) OR TO THE LEFT.
- 3. FOR ACTIVE POSITION SIZES 4 AND ABOVE, POSTS WILL BE SELECTIVELY SWAGED TO PROVIDE CONNECTOR RETENTION TO THE PC BOARD UNTIL SOLDERED. FOR POSITION SIZE 2, POSTS WILL BE KINKED (SEE TABLE FOR RETENTION FEATURE LOCATION)
- △ 0.000762 [0.00030] GOLD ON CONTACT AREA, 0.00254-0.00508 [0.00100-0.00200] MATTE TIN-LEAD ON SOLDER TAIL ALL OVER 0.00127 [0.00050] NICKEL.
- △ HOUSING: GLASS FILLED THERMOPLASTIC, COLOR, BLACK. (WILL WITHSTAND VAPOR PHASE REFLOW.)
- △ 0.000762 [0.00030] GOLD ON CONTACT AREA, 0.00254-0.00508 [0.00100-0.00200] MATTE TIN ON SOLDER TAIL ALL OVER 0.00127 [0.00050] NICKEL.
- △ OBSOLETE PARTS: OBSOLETE CIS STREAMLINING PER D.RENAUD/D.SINISI

THIS DRAWING IS A CONTROLLED DOCUMENT.

INCHES: 1/16, 1/8, 3/16, 1/4, 5/16, 3/8, 7/16, 1/2, 5/8, 3/4, 7/8, 1, 1 1/8, 1 1/4, 1 1/2, 1 3/4, 1 7/8, 2, 2 1/8, 2 1/4, 2 1/2, 2 3/4, 3, 3 1/4, 3 1/2, 3 3/4, 4, 4 1/4, 4 1/2, 4 3/4, 5, 5 1/4, 5 1/2, 5 3/4, 6, 6 1/4, 6 1/2, 6 3/4, 7, 7 1/4, 7 1/2, 7 3/4, 8, 8 1/4, 8 1/2, 8 3/4, 9, 9 1/4, 9 1/2, 9 3/4, 10, 10 1/4, 10 1/2, 10 3/4, 11, 11 1/4, 11 1/2, 11 3/4, 12, 12 1/4, 12 1/2, 12 3/4, 13, 13 1/4, 13 1/2, 13 3/4, 14, 14 1/4, 14 1/2, 14 3/4, 15, 15 1/4, 15 1/2, 15 3/4, 16, 16 1/4, 16 1/2, 16 3/4, 17, 17 1/4, 17 1/2, 17 3/4, 18, 18 1/4, 18 1/2, 18 3/4, 19, 19 1/4, 19 1/2, 19 3/4, 20, 20 1/4, 20 1/2, 20 3/4, 21, 21 1/4, 21 1/2, 21 3/4, 22, 22 1/4, 22 1/2, 22 3/4, 23, 23 1/4, 23 1/2, 23 3/4, 24, 24 1/4, 24 1/2, 24 3/4, 25, 25 1/4, 25 1/2, 25 3/4, 26, 26 1/4, 26 1/2, 26 3/4, 27, 27 1/4, 27 1/2, 27 3/4, 28, 28 1/4, 28 1/2, 28 3/4, 29, 29 1/4, 29 1/2, 29 3/4, 30, 30 1/4, 30 1/2, 30 3/4, 31, 31 1/4, 31 1/2, 31 3/4, 32, 32 1/4, 32 1/2, 32 3/4, 33, 33 1/4, 33 1/2, 33 3/4, 34, 34 1/4, 34 1/2, 34 3/4, 35, 35 1/4, 35 1/2, 35 3/4, 36, 36 1/4, 36 1/2, 36 3/4, 37, 37 1/4, 37 1/2, 37 3/4, 38, 38 1/4, 38 1/2, 38 3/4, 39, 39 1/4, 39 1/2, 39 3/4, 40, 40 1/4, 40 1/2, 40 3/4, 41, 41 1/4, 41 1/2, 41 3/4, 42, 42 1/4, 42 1/2, 42 3/4, 43, 43 1/4, 43 1/2, 43 3/4, 44, 44 1/4, 44 1/2, 44 3/4, 45, 45 1/4, 45 1/2, 45 3/4, 46, 46 1/4, 46 1/2, 46 3/4, 47, 47 1/4, 47 1/2, 47 3/4, 48, 48 1/4, 48 1/2, 48 3/4, 49, 49 1/4, 49 1/2, 49 3/4, 50, 50 1/4, 50 1/2, 50 3/4, 51, 51 1/4, 51 1/2, 51 3/4, 52, 52 1/4, 52 1/2, 52 3/4, 53, 53 1/4, 53 1/2, 53 3/4, 54, 54 1/4, 54 1/2, 54 3/4, 55, 55 1/4, 55 1/2, 55 3/4, 56, 56 1/4, 56 1/2, 56 3/4, 57, 57 1/4, 57 1/2, 57 3/4, 58, 58 1/4, 58 1/2, 58 3/4, 59, 59 1/4, 59 1/2, 59 3/4, 60, 60 1/4, 60 1/2, 60 3/4, 61, 61 1/4, 61 1/2, 61 3/4, 62, 62 1/4, 62 1/2, 62 3/4, 63, 63 1/4, 63 1/2, 63 3/4, 64, 64 1/4, 64 1/2, 64 3/4, 65, 65 1/4, 65 1/2, 65 3/4, 66, 66 1/4, 66 1/2, 66 3/4, 67, 67 1/4, 67 1/2, 67 3/4, 68, 68 1/4, 68 1/2, 68 3/4, 69, 69 1/4, 69 1/2, 69 3/4, 70, 70 1/4, 70 1/2, 70 3/4, 71, 71 1/4, 71 1/2, 71 3/4, 72, 72 1/4, 72 1/2, 72 3/4, 73, 73 1/4, 73 1/2, 73 3/4, 74, 74 1/4, 74 1/2, 74 3/4, 75, 75 1/4, 75 1/2, 75 3/4, 76, 76 1/4, 76 1/2, 76 3/4, 77, 77 1/4, 77 1/2, 77 3/4, 78, 78 1/4, 78 1/2, 78 3/4, 79, 79 1/4, 79 1/2, 79 3/4, 80, 80 1/4, 80 1/2, 80 3/4, 81, 81 1/4, 81 1/2, 81 3/4, 82, 82 1/4, 82 1/2, 82 3/4, 83, 83 1/4, 83 1/2, 83 3/4, 84, 84 1/4, 84 1/2, 84 3/4, 85, 85 1/4, 85 1/2, 85 3/4, 86, 86 1/4, 86 1/2, 86 3/4, 87, 87 1/4, 87 1/2, 87 3/4, 88, 88 1/4, 88 1/2, 88 3/4, 89, 89 1/4, 89 1/2, 89 3/4, 90, 90 1/4, 90 1/2, 90 3/4, 91, 91 1/4, 91 1/2, 91 3/4, 92, 92 1/4, 92 1/2, 92 3/4, 93, 93 1/4, 93 1/2, 93 3/4, 94, 94 1/4, 94 1/2, 94 3/4, 95, 95 1/4, 95 1/2, 95 3/4, 96, 96 1/4, 96 1/2, 96 3/4, 97, 97 1/4, 97 1/2, 97 3/4, 98, 98 1/4, 98 1/2, 98 3/4, 99, 99 1/4, 99 1/2, 99 3/4, 100, 100 1/4, 100 1/2, 100 3/4.

Customer Drawing: A100779 (G=146310)

THIS DRAWING IS UNPUBLISHED. ALL RIGHTS RESERVED.
 © 2008 BY TYS ELECTRONICS CORPORATION

REV	DATE	DESCRIPTION	BY	CHK	APP
AD 00		SEE SHEET 1			

REV	DATE	DESCRIPTION	BY	CHK	APP		
△	1,2,39,40	1,2,39,40	101.19 [3.984]	99.06 [3.900]	39	80	9-146310-0
△	1,2,38,39	1,2,38,39	98.85 [3.884]	96.52 [3.800]	38	78	8-146310-9
△	1,2,37,38	1,2,37,38	96.11 [3.784]	93.98 [3.700]	37	76	8-146310-8
△	1,2,36,37	1,2,36,37	93.57 [3.684]	91.44 [3.600]	36	74	8-146310-7
△	1,2,35,36	1,2,35,36	91.03 [3.584]	88.90 [3.500]	35	72	8-146310-6
△	1,2,34,35	1,2,34,35	88.49 [3.484]	86.36 [3.400]	34	70	8-146310-5
△	1,2,33,34	1,2,33,34	85.95 [3.384]	83.82 [3.300]	33	68	8-146310-4
△	1,2,32,33	1,2,32,33	83.41 [3.284]	81.28 [3.200]	32	66	8-146310-3
△	1,2,31,32	1,2,31,32	80.87 [3.184]	78.74 [3.100]	31	64	8-146310-2
△	1,2,30,31	1,2,30,31	78.33 [3.084]	76.20 [3.000]	30	62	8-146310-1
△	1,2,29,30	1,2,29,30	75.79 [2.984]	73.66 [2.900]	29	60	8-146310-0
△	1,2,28,29	1,2,28,29	73.25 [2.884]	71.12 [2.800]	28	58	7-146310-9
△	1,2,27,28	1,2,27,28	70.71 [2.784]	68.58 [2.700]	27	56	7-146310-8
△	1,2,26,27	1,2,26,27	68.17 [2.684]	65.94 [2.600]	26	54	7-146310-7
△	1,2,25,26	1,2,25,26	65.63 [2.584]	63.5 [2.500]	25	52	7-146310-6
△	1,2,24,25	1,2,24,25	63.09 [2.484]	60.96 [2.400]	24	50	7-146310-5
△	1,2,23,24	1,2,23,24	60.55 [2.384]	58.42 [2.300]	23	48	7-146310-4
△	1,2,22,23	1,2,22,23	58.01 [2.284]	55.88 [2.200]	22	46	7-146310-3
△	1,2,21,22	1,2,21,22	55.47 [2.184]	53.34 [2.100]	21	44	7-146310-2
△	1,2,20,21	1,2,20,21	52.93 [2.084]	50.80 [2.000]	20	42	7-146310-1
△	1,2,19,20	1,2,19,20	50.39 [1.984]	48.26 [1.900]	19	40	7-146310-0
△	1,2,18,19	1,2,18,19	47.85 [1.884]	45.72 [1.800]	18	38	6-146310-9
△	1,2,17,18	1,2,17,18	45.31 [1.784]	43.18 [1.700]	17	36	6-146310-8
△	1,2,16,17	1,2,16,17	42.77 [1.684]	40.64 [1.600]	16	34	6-146310-7
△	1,2,15,16	1,2,15,16	40.23 [1.584]	38.10 [1.500]	15	32	6-146310-6
△	1,2,14,15	1,2,14,15	37.69 [1.484]	35.56 [1.400]	14	30	6-146310-5
△	1,2,13,14	1,2,13,14	35.15 [1.384]	33.02 [1.300]	13	28	6-146310-4
△	1,2,12,13	1,2,12,13	32.61 [1.284]	30.48 [1.200]	12	26	6-146310-3
△	1,2,11,12	1,2,11,12	30.07 [1.184]	27.94 [1.100]	11	24	6-146310-2
△	1,2,10,11	1,2,10,11	27.53 [1.084]	25.40 [1.000]	10	22	6-146310-1
△	1,2,9,10	1,2,9,10	24.99 [.984]	22.86 [.900]	9	20	6-146310-0
△	1,2,8,9	1,2,8,9	22.45 [.884]	20.32 [.800]	8	18	5-146310-9
△	1,2,7,8	1,2,7,8	19.91 [.784]	17.78 [.700]	7	16	5-146310-8
△	1,2,6,7	1,2,6,7	17.37 [.684]	15.24 [.600]	6	14	5-146310-7
△	1,2,5,6	1,2,5,6	14.83 [.584]	12.70 [.500]	5	12	5-146310-6
△	1,2,4,5	1,2,4,5	12.29 [.484]	10.16 [.400]	4	10	5-146310-5
△	1,2,3,4	1,2,3,4	9.75 [.384]	7.62 [.300]	3	8	5-146310-4
△	1,2,3	1,2,3	7.21 [.284]	5.08 [.200]	2	6	5-146310-3
△	1,2	1,2	4.67 [.184]	2.54 [.100]	1	4	5-146310-2

OBSOLETE

OBSOLETE

PLATING	ROW M HOLD-DOWN POST CONFIG. LOCATIONS.	ROW N	C	B	A	NO. OF POSITIONS	PART NUMBER
---------	---	-------	---	---	---	---------------------	-------------

THIS DRAWING IS A CONTROLLED DOCUMENT. SEE TABLE

UNLESS OTHERWISE SPECIFIED: DIMENSIONS ARE IN INCHES TOLERANCES UNLESS OTHERWISE SPECIFIED: FRACTIONS DECIMALS FRACTIONS DECIMALS FRACTIONS DECIMALS	DATE: 01/07/09 DRAWING NO: A100779 REV: 0	ISSUED BY: [Signature] DATE: 01/07/09	DESIGNED BY: [Signature] DATE: 01/07/09	CHECKED BY: [Signature] DATE: 01/07/09	APPROVED BY: [Signature] DATE: 01/07/09
---	---	--	--	---	--

Customer Drawing: A100779 (G=146310) TITLE: 4.1 SHEET: 2 OF 2