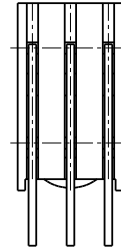
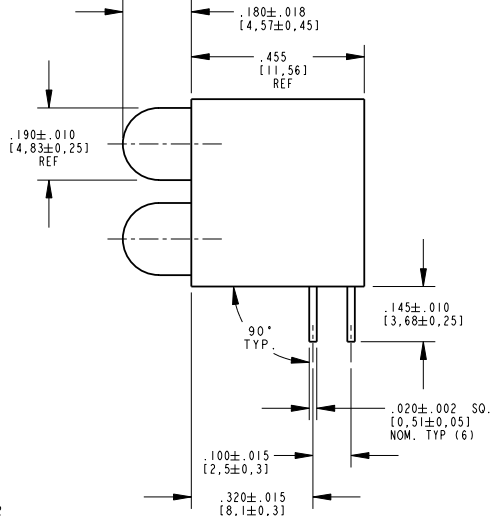
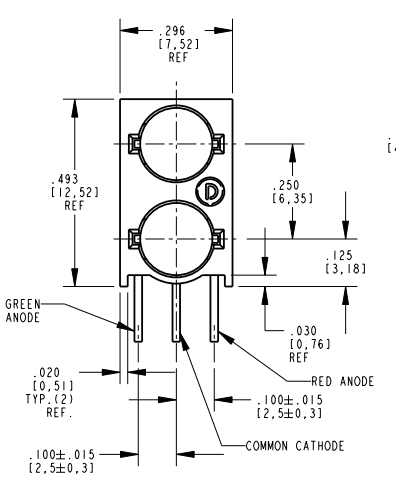


| LED COLOR = RED / GREEN DIFFUSED       |       |     |     |     |                 |
|--|-------|-----|-----|-----|-----------------|
| OPERATING TEMPERATURES AT 25°C AMBIENT |       |     |     |     |                 |
| CHARACTERISTICS                        | COLOR | MIN | TYP | MAX | TEST CONDITIONS |
| LUMINOUS INTENSITY                     | RED   | 2.1 | 5   |     | If = 10mA       |
|  | GREEN | 4.2 | 8   |     |                 |
| FORWARD VOLTAGE                        | RED   | 2.1 | 2.5 |     | If = 10mA       |
|  | GREEN | 2.3 | 2.7 |     |                 |
| REVERSE VOLTAGE                        | RED   | 5   |     |     | Ir = 100µA      |
|  | GREEN | 5   |     |     |                 |
| PEAK WAVELENGTH                        | RED   | 635 |     |     |                 |
|  | GREEN | 565 |     |     |                 |
| DOMINANT WAVELENGTH                    | RED   | 626 |     |     | nm              |
|  | GREEN | 569 |     |     |                 |
|  | RED   | 65  |     |     |                 |
| VIEWING ANGLE                          | RED   | 65  |     |     | Degree          |
|  | GREEN | 65  |     |     |                 |

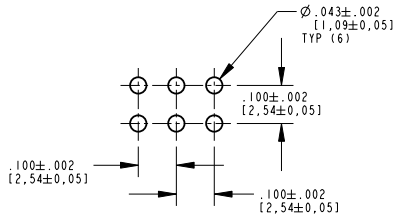
| LED COLOR = RED / GREEN DIFFUSED                            |                     |       |
|---|---------------------|-------|
| ABSOLUTE MAXIMUM RATING AT 25°C AMBIENT                     |                     |       |
|   | RED / GREEN         | UNITS |
| POWER DISSIPATION   | 135                 | mW    |
| DERATE LINEARLY FROM 50°C                                   | 0.5                 | mA/°C |
| AVERAGE FORWARD CURRENT                                     | 25                  | mA    |
| PEAK FORWARD CURRENT ( 1/10 DUTY CYCLE, 0.1 µs PULSE WIDTH) | 90                  | mA    |
| LEAD SOLDERING TEMPERATURE, 5 SEC., 1/16" FROM BODY         | 260°C FOR 5 SECONDS | °C    |
| OPERATING TEMPERATURE                                       | -20° TO +85         | °C    |
| STORAGE TEMPERATURE   | -55 TO +100         | °C    |

| REV | ECN NO | REVISIONS   | DRW | CKD | APP | DATE |
|-----|--------|-------------|-----|-----|-----|------|
| A   |        | NEW RELEASE | TC  |     |     |      |



**RoHS Compliant 552-351IF**

Part Numbers with the "F" suffix ending are RoHS Compliant. Packaging is marked with "RoHS Compliant" label or equivalent markings. Parts can be wave soldered, dip soldered or hand soldered using typical lead-free soldering process with max 260°C temp. for 5 sec.



RECOMMENDED HOLE PATTERN GAUGE

NOTES:

1. DIALIGHT PART NUMBER 552-351IF

|   |  |          |
|---|--|----------|
| THIS DRAWING AND THE CONTENTS HEREIN ARE CONFIDENTIAL AND THE SOLE PROPERTY OF DIALIGHT. REPRODUCTION OF THIS DRAWING OR CONSTRUCTION OF ANY PARTS WITHIN THIS DRAWING ARE FORBIDDEN WITHOUT THE WRITTEN CONSENT OF DIALIGHT. |  |          |
| SCALE: DRAWING SCALE<br>ALL DIM'S IN: INCHES (MM)   | DRAWING NUMBER<br>C-17486                                      | REV<br>A |
| TOLERANCES:<br>UNLESS OTHERWISE SPECIFIED<br>FRACTIONS: ±1/64<br>DECIMALS (.XX): ±.01<br>DECIMALS (.XXX): ±.005<br>DECIMALS (.XXXX): ±.0005<br>ANGLES: ±1°  | TITLE<br>5MM BI-LEVEL CBI R/G, R/G<br>3 LEADS (RoHS COMPLIANT) | MATERIAL |
| FINISH:   |  |          |
| FSCM 83330  | 1501 ROUTE 34 SOUTH<br>FARMINGDALE, NJ 07727                   |          |
| SHEET 1 OF 1 FAMILY TABLE:  |  |          |