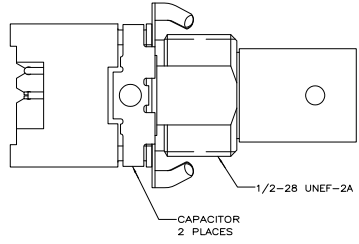
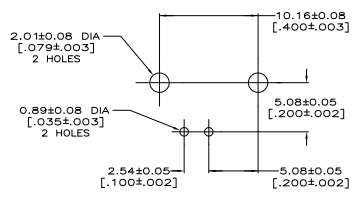
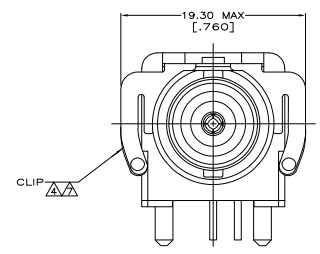
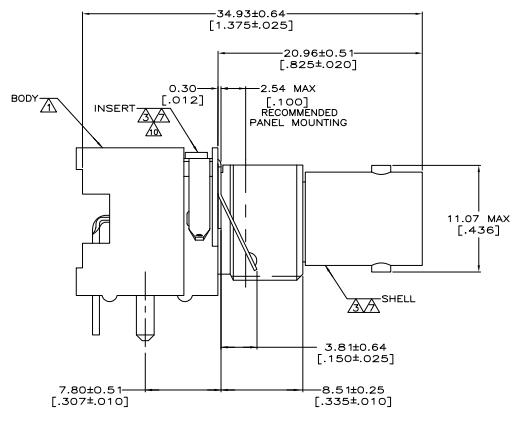
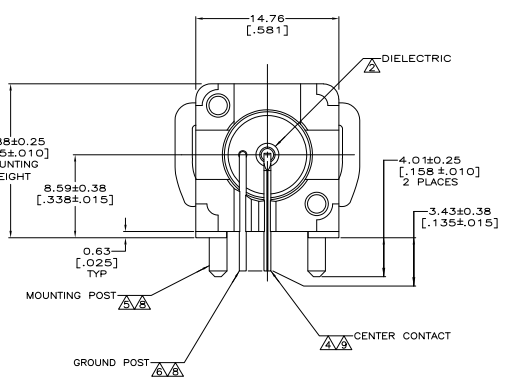


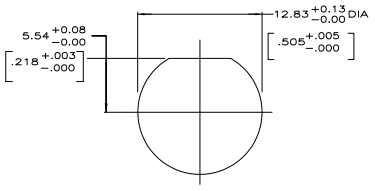
REV	DATE	DESCRIPTION	BY	CHK	APP
AJ	16				
A		REVISED FOR EC 0514-0150-05			



- ▲ POLYESTER, PBT, BLACK, PER MIL-M-24519.
- ▲ POLYMETHYLPENTENE GENERAL PURPOSE.
- ▲ ZINC PER QQ-Z-363.
- ▲ PHOSPHOR BRONZE PER QQ-B-750.
- ▲ BRASS PER QQ-B-626.
- ▲ BRASS PER ASTM-B-453.
- ▲ NICKEL PL PER QQ-N-290.
- ▲ TIN PLATE PER ASTM-B-545.
- ▲ SELECTIVELY GOLD PLATED ON INTERFACE AREA PER ASTM-B-488, 0.76 [0.00030] THICK, TIN PLATED ON SOLDER TAIL PER ASTM-B-545, ALL OVER NICKEL PLATE PER QQ-N-290.
- ▲ ESD DEVICE, VOLTAGE BREAKDOWN <3.5KVDC.



PCB CONFIGURATION



RECOMMENDED PANEL CUTOUT

9400 pF, 1500 VDC		5415085-1
CAPACITANCE & VOLTAGE		PART NO
THIS DRAWING IS A CONTROLLED DOCUMENT. TDK ELECTRONICS CORPORATION HARRISBURG, PA 17105-3608		
DRAWING NO: 108-1269 REV: A DATE: 05/14/05	CUSTOMER DRAWING TYP: S:1 SHEET: 1 OF 1	JACK, DECOUPLER, PCB RIGHT ANGLE STANDARD, ESD PROTECTED, 75 OHM BNC