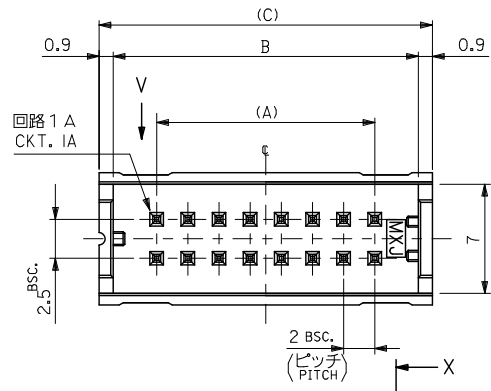


注記
NOTES

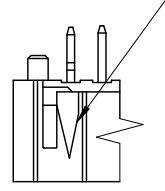
1. 材料 :
MATERIALS:
ウエハー : ホリアミド、ガラス充填、UL94V-0、色 : グレー
WAFER : PA, GLASS FILLED, UL94V-0, COLOR: GRAY
ピン : 黄銅、スズメッキ
PIN : BRASS, PRE-TINNED
2. 適合メスコネクター : 51089-***5, 52478-***15, 52484-***15
適合クリップ : 51094-***00
MATING CONNECTOR :
MATING CLIP
3. 推奨基板厚 :
RECOMMENDED PCB THICKNESS : t
4. メッキ仕様
TERMINAL PLATING
表面メッキ : スズメッキ 1μm MIN.
SURFACE PLATE : TIN 1μm MIN.
下地メッキ : ニッケルメッキ 0.5μm MIN.
UNDER PLATE : NICKEL 0.5μm MIN.
5. ELV AND RoHS COMPLIANT.

無鉛
LEAD FREE

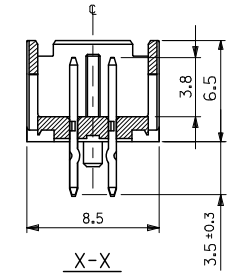
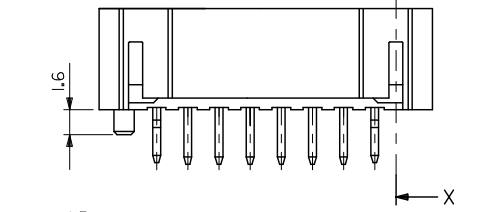
| | | | | |
|------|------|----|---------------------------|------|
| 65.4 | 63.6 | 58 | 53313-6065 | 60 |
| 55.4 | 53.6 | 48 | -5065 | 50 |
| 45.4 | 43.6 | 38 | -4065 | 40 |
| 39.4 | 37.6 | 32 | -3465 | 34 |
| 35.4 | 33.6 | 28 | -3065 | 30 |
| 33.4 | 31.6 | 26 | -2865 | 28 |
| 31.4 | 29.6 | 24 | -2665 | 26 |
| 29.4 | 27.6 | 22 | -2465 | 24 |
| 27.4 | 25.6 | 20 | -2265 | 22 |
| 25.4 | 23.6 | 18 | -2065 | 20 |
| 23.4 | 21.6 | 16 | -1865 | 18 |
| 21.4 | 19.6 | 14 | -1665 | 16 |
| 19.4 | 17.6 | 12 | -1465 | 14 |
| 17.4 | 15.6 | 10 | -1265 | 12 |
| 15.4 | 13.6 | 8 | -1065 | 10 |
| 13.4 | 11.6 | 6 | -0865 | 8 |
| 11.4 | 9.6 | 4 | 53313-0665 | 6 |
| (C) | B | A | TRAY PACKAGE ORDER NO. | CKT. |



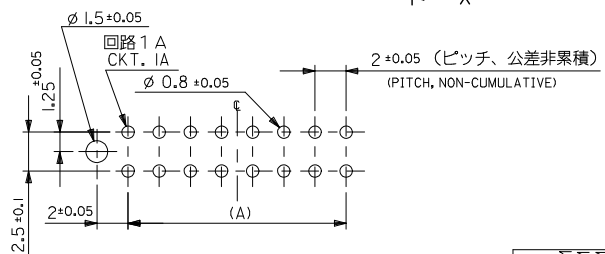
回路 1 A 表示
CKT. 1A IDENTIFICATION



V



X-X



基板取付穴推奨寸法 (参考)
RECOMMENDED PCB HOLE DIM.(REF.)

MATERIAL
材料
注記参照
SEE NOTES

| | | | | | | | |
|--|--|---------------------------|----------------------------|------------------------------|--|------------------------|---------------------------|
| REVISED EC NO: J2010-0349 DRAWN BY DRYNTKON CHKD: KASAKAWA APPROV: NIKITA 2009/08/31 2009/08/31 2009/08/31 | GENERAL TOLERANCES (UNLESS SPECIFIED) | | DIMENSION STYLE MM ONLY | | SCALE 4:1 | DESIGN UNITS METRIC | THIRD ANGLE PROJECTION |
| | 10 UNDER | ±0.2 | DRAWN BY A. IIDA | DATE 2003/05/07 | TITLE 2.0 W/B DUAL ROW S/T HEADER ASSY | | |
| | 10 OVER 30 UNDER | ±0.25 | CHECKED BY J. MIYAZAWA | DATE 2003/05/07 | MATERIAL NO. SEE CHART | | |
| | 30 OVER | ±0.3 | APPROVED BY Y. ITO | DATE 2003/05/07 | DOCUMENT NO. SD-53313-002 | | |
| ANGULAR ±3° DRAFT WHERE APPLICABLE MUST REMAIN WITHIN DIMENSIONS | | MATERIAL NO. SEE CHART | | DOCUMENT NO. SD-53313-002 | | SHEET NO. 1 OF 1 | |
| THIS DRAWING CONTAINS INFORMATION THAT IS PROPRIETARY TO MOLEX INCORPORATED AND SHOULD NOT BE USED WITHOUT WRITTEN PERMISSION | | | | | | | |